

STATE OF NEW MEXICO
ENERGY, MINERALS AND NATURAL RESOURCES DEPARTMENT
OIL CONSERVATION DIVISION

IN THE MATTER OF THE HEARING CALLED BY)	
THE OIL CONSERVATION DIVISION FOR THE)	
PURPOSE OF CONSIDERING:)	
)	CASE NO. 13,705
APPLICATION OF RANGE OPERATING NEW)	
MEXICO, INC., FOR APPROVAL OF ITS EAST)	
LOVING-DELAWARE LEASEHOLD WATERFLOOD)	
PROJECT INCLUDING SIX INJECTION WELLS TO)	
BE LOCATED AT UNORTHODOX WELL LOCATIONS)	
AND QUALIFICATION OF THE PROJECT AREA)	
FOR THE RECOVERED OIL TAX RATE PURSUANT)	
TO THE ENHANCED OIL RECOVERY ACT, EDDY)	
COUNTY, NEW MEXICO)	
)	

OFFICIAL EXHIBIT FILE

EXAMINER HEARING

BEFORE: DAVID R. CATANACH, Hearing Examiner

May 11th, 2006

Santa Fe, New Mexico

This matter came on for hearing before the New Mexico Oil Conservation Division, DAVID R. CATANACH, Hearing Examiner, on Thursday, May 11th, 2006, at the New Mexico Energy, Minerals and Natural Resources Department, 1220 South Saint Francis Drive, Room 102, Santa Fe, New Mexico, Steven T. Brenner, Certified Court Reporter No. 7 for the State of New Mexico.

* * *

RANGE OPERATING NEW MEXICO, INC.

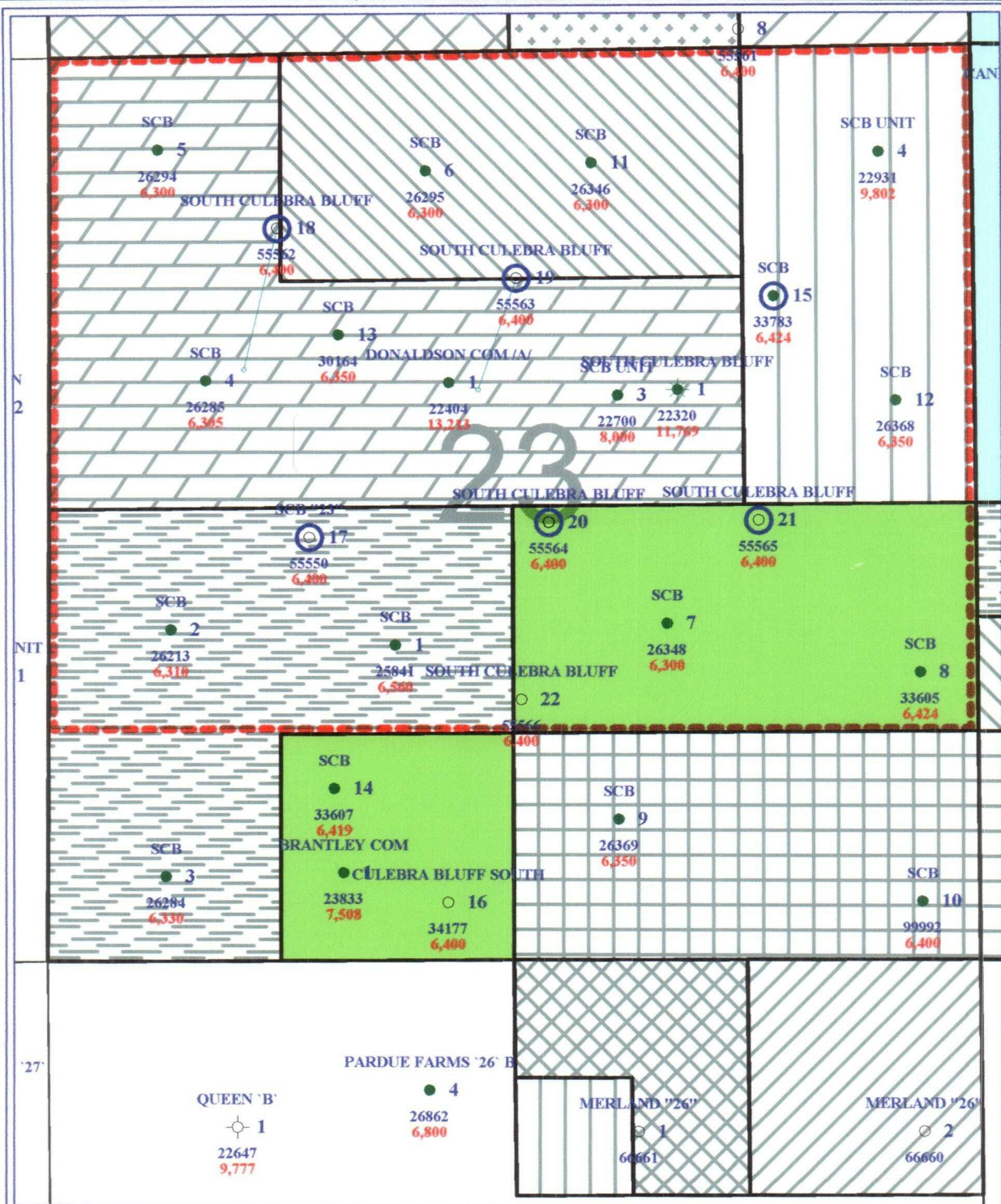
EXHIBIT BOOK

New Mexico Oil Conservation Division

Case 13705

Hearing before David R. Catanach

May 11, 2006



PETRA 4/6/2006 2:18:02 PM



RANGE OPERATING NEW MEXICO, INC.

MINERAL OWNERSHIP



SYMBOL HIGHLIGHT
○ INJECTION WELLS

WELL SYMBOLS
○ Location Only
● Oil Well
● Oil & Gas Well
○ Dry Hole
△ Service Well

REMARKS
PROPOSED LEASE FLOOD OUTLINE
IN RED DASH LINE

April 6, 2006



May 9, 2006

**EAST LOVING-DELAWARE LEASEHOLD WATERFLOOD PORJECT
PROPOSED INJECTION WELLBORES**

- 1. SCB 23-15 Well 1430 feet FNL and 1150 feet FEL (Unit H)
Section 23, T23S, R28E**

- 2. SCB 23-17 Well 2440 feet FSL and 1500 feet FWL (Unit K)
Section 23, T23S, R28E**

- 3. SCB 23-18 Well Surface: 1815 feet FNL and 1200 feet FEL (Unit D)
Bottomhole:
1300 feet FWL and 1000 feet FNL (Unit E)
Section 23, T23S, R28E**

- 4. SCB 23-19 Well Surface: 1950 feet FNL and 2470 feet FWL (Unit F)
Bottomhole:
2620 feet FEL and 1300 feet FNL (Unit F)
Section 23, T23S, R28E**

- 5. SCB 23-20 Well 2520 feet FSL and 2460 feet FEL (Unit J)
Section 23, T23S, R28E**

- 6. SCB 23-21 Well 2531 FSL and 1252 FEL (Unit I)
Section 23, T23S, R28E**

EXHIBIT "C"
Loving East Delaware Lease Flood
Current Producers

1. Donaldson Comm #1
2. SCB #3B
3. SCB #4B
4. SCB 23-1
5. SCB 23-2
6. SCB 23-4
7. SCB 23-5
8. SCB 23-6
9. SCB 23-7
10. SCB 23-8
11. SCB 23-11
12. SCB 23-12
13. SCB 23-13
14. SCB 23-15 *

* SCB 23-15 to be converted to injection well