

PLU File

BASS ENTERPRISES PRODUCTION CO.

201 MAIN ST.

FORT WORTH, TEXAS 76102-3131

817/390-8400

June 17, 2004

Bureau of Land Management  
Roswell District Office  
2909 W. 2<sup>nd</sup> Street  
Roswell, New Mexico 88201  
Attn: Ms. Alexis Swoboda

New Mexico State Land Office  
Commissioner of Public Lands  
310 Old Santa Fe Trail  
Santa Fe, New Mexico 87501  
Attention: Mr. Pete Martinez

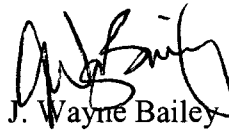
New Mexico Oil Conservation Division  
1220 St. Francis  
Santa Fe, New Mexico 87505  
Attention: Roy Johnson

Re: Third Revision Delaware "C" Participating Area  
Poker Lake Unit  
Eddy County, New Mexico

Gentlemen:

Please reference Bass' letter of June 9, 2004 (copy attached) pertaining to the referenced participation area revision. The enclosed items were inadvertently omitted from the original letter. Thank you very much and if further information is needed, please advise.

Sincerely,



J. Wayne Bailey

JWB:ca

BASS ENTERPRISES PRODUCTION CO.

201 MAIN ST.  
FORT WORTH, TEXAS 76102-3131  
817/390-8400

June 9, 2004

Bureau of Land Management  
Roswell District Office  
2909 W. 2<sup>nd</sup> Street  
Roswell, New Mexico 88201  
Attn: Ms. Alexis Swoboda

New Mexico State Land Office  
Commissioner of Public Lands  
310 Old Santa Fe Trail  
Santa Fe, New Mexico 87501  
Attention: Mr. Pete Martinez

New Mexico Oil Conservation Division  
1220 St. Francis  
Santa Fe, New Mexico 87505  
Attention: Roy Johnson

Re: Third Revision Delaware "C" Participating Area  
W/2 NW/4 Section 32, T23S-R30E  
W/2 SW/4 Section 32, T23S-R30E  
SE/4, E/2 SW/4 Section 31, T23S-R30E  
W/2 NW/4 Section 5, T24S-R30E  
NE/4, E/2 NW/4 Section 6, T24S-R30E  
W/2 SW/4 Section 5, T24S-R30E  
SE/4, E/2 SW/4 Section 6, T24S-R30E  
NE/4 Section 7, T24S-R30E  
W/2 NW/4 Section 8, T24S-R30E  
W/2 SW/4 Section 8, T24S-R30E  
SE/4 Section 7, T24S-R30E  
E/2 W/2 Section 7, T24S-R30E  
NE/4 Section 18, T24S-R30E  
NW/4 NW/4 Section 17, T24S-R30E  
Poker Lake Unit  
Eddy County, New Mexico

Gentlemen:

Bass Enterprises Production Co., as Unit Operator of the Poker Lake Unit Agreement, pursuant to the provisions of Section 11, thereof, respectfully submits for your approval the selection of the following described lands to comprise the Third Revision to the Participating Area for the Delaware "C" Formation in the Poker Lake Unit consisting of 1,879.98 acres containing the above tracts more specifically described on the attached Exhibit "A".

In support of this application the following numbered items are attached hereto and made part hereof.

1. An ownership map (Exhibit "A") depicting the boundaries of the proposed Third Revision for the Delaware "C" Formation.
2. A schedule (Exhibit "B") identifying the lands entitled to participate in the unitized substances produced from the Delaware "C" Formation with the percentage of participation of each lease or tract indicated thereon.

June 9, 2004

Page 2

This proposed participating area revision is predicated upon the knowledge and information first obtained upon the completion of the Unit Well No. 182 located in the NW/4 SE/4 of Section 7, T24S-R30E on February 28, 2003. It should be noted that the area in the proposed revised area set forth above contains unit well Nos. 190 and 200, all of which have been previously determined as capable of producing in commercial quantities. Therefore, Bass respectfully requests your approval of the hereinabove selection of lands to constitute the Third Revision to the Delaware "C" Participating Area to Be effective February 1, 2003. Thank you very much for your cooperation in this regard and should you require additional information concerning same, please don't hesitate to contact the undersigned.

Sincerely,

  
J. Wayne Bailey

ACCEPTED AND AGREE this \_\_\_\_\_ day of \_\_\_\_\_, 2004.

BUREAU OF LAND MANAGEMENT

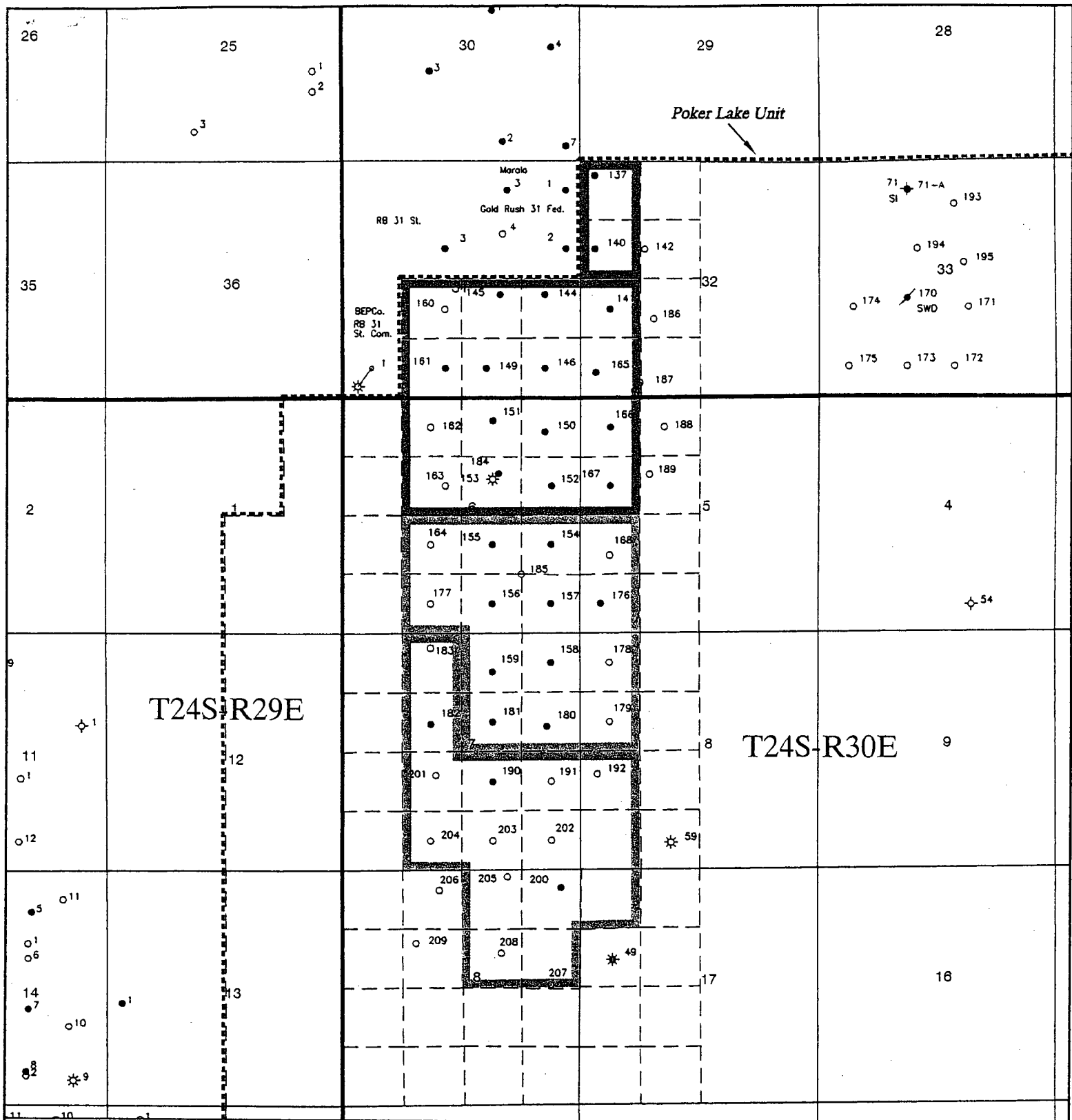
By: \_\_\_\_\_

COMMISSIONER OF PUBLIC LANDS

By: \_\_\_\_\_

NEW MEXICO OIL CONSERVATION DIVISION

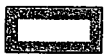
By: \_\_\_\_\_



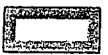
Initial Delaware "C"  
Participating Area - (Effective 9-9-97) 80 Acres



First Revision to Initial Delaware "C"  
Participating Area - (Effective 11-1-99) 720 Acres



Second Revision to Initial Delaware "C"  
Participating Area - (Effective 7-01-01) 1279.98 Acres



Third Revision to Initial Delaware "C"  
Participating Area - (Effective 2-01-03) 1879.98 Acres



**Bass Enterprises Production Co.**

POKER LAKE UNIT  
Eddy County, New Mexico

EXHIBIT "A"

DATE: 6-09-04 DRAFT BY: PO FILE: dlwr c logs PA.dwg pg2

# EXHIBIT "B"

## Third Revision to Initial Delaware "C" Participating Area Poker Lake Federal Unit Eddy County, New Mexico

Tract No.	Lease No.	Description	Participating Acres	Percentage of Participation	Working Interest Owners
9	NM-02860	Section 18: T24S-R30E - NE/4 Section 17: T24S-R30E - NW/4 NW/4	200	10.639	Bass Enterprises Production Co. - 100%
11	NM-02864	Section 31: T23S-R30E - SE/4	160	8.510	Bass Enterprises Production Co. - 100%
13-a	NM-03075	Section 6: T24S-R30E; NE/4 NW/4	40	2.128	Bass Enterprises Production Co. - 100%
42	LC-068430	Section 5: T24S-R30E W/2 NW/4, W/2 SW/4	159.98	8.510	Bass Enterprises Production Co. - 100%
43	LC-068431	Section 8: T24S-R30E W/2 W/2	160	8.510	Bass Enterprises Production Co. - 100%
44	LC-068545	Section 6: T24S-R30E NE/4, SE/4 NW/4, SE/4, E/2 SW/4 and Section 7: T24S-R30E E/2, E/2 W/2	920	48.937	Bass Enterprises Production Co. - 100%
62	E-5229-1	Section 31: T23S-R30E E/2 SW/4 and Section 32: T23S-R30E W/2 W/2	240	12.766	Bass Enterprises Production Co. - 100%
<b>Totals</b>			<b>1879.98</b>	<b>100.000%</b>	

Total Federal Lands: 1639.98 Acres (87.23%)

Total State Lands: 240.00 Acres (12.77%)

Total Fee Lands: 0.00 Acres

**Total 1879.98 Acres**

**BASS ENTERPRISES PRODUCTION CO.**

201 MAIN ST.

FORT WORTH, TEXAS 76102-3131

817/390-8400

August 31, 2004

**FEDERAL EXPRESS**

Bureau of Land Management  
Roswell District Office  
2909 W. 2<sup>nd</sup> Street  
Roswell, New Mexico 88201  
Attn: Ms. Alexis Swoboda

New Mexico State Land Office  
Commissioner of Public Lands  
310 Old Santa Fe Trail  
Santa Fe, New Mexico 87501  
Attention: Mr. Pete Martinez

New Mexico Oil Conservation Division  
1220 St. Francis  
Santa Fe, New Mexico 87505  
Attention: Roy Johnson

Re: Second Revision Initial Wolfcamp Participating Area  
W/2 Section 3, T25S-R31E  
Section 4, T25S-R31E  
Section 5, T25S-R31E  
Section 32, T24S-R31E  
S/2 Section 29, T24S-R31E  
Section 33, T24S-R31E  
W/2 Section 34, T24S-R31E  
Poker Lake Unit  
Eddy County, New Mexico

Gentlemen:

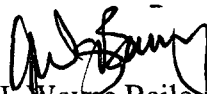
Bass Enterprises Production Co., as Unit Operator of the Poker Lake Unit Agreement, pursuant to the provisions of Section 11, thereof, respectfully submits for your approval the selection of the following described lands to comprise the Second Revision to the Participating Area for the Wolfcamp Formation in the Poker Lake Unit consisting of, more or less, 3,479.70 acres containing the above tracts more specifically described on the attached Exhibit "A".

In support of this application the following numbered items are attached hereto and made part hereof.

1. An ownership map (Exhibit "A") depicting the boundaries of the proposed Third Revision for the Wolfcamp Formation.
2. A schedule (Exhibit "B") identifying the lands entitled to participate in the unitized substances produced from the Wolfcamp Formation with the percentage of participation of each lease or tract indicated thereon.

This proposed participating area revision is predicated upon the knowledge and information first obtained upon the completion of the Poker Lake Unit Well No. 196 located in the NE/4 SW/4 of Section 29, T24S-R31E on January 9, 2004. Therefore, Bass respectfully requests your approval of the hereinabove selection of lands to constitute the Second Revision to the Wolfcamp Participating Area to be effective January 1, 2004. Thank you very much for your cooperation in this regard and should you require additional information concerning same, please don't hesitate to contact the undersigned.

Sincerely,



J. Wayne Bailey

ACCEPTED AND AGREE this \_\_\_\_\_ day of \_\_\_\_\_, 2004.

BUREAU OF LAND MANAGEMENT

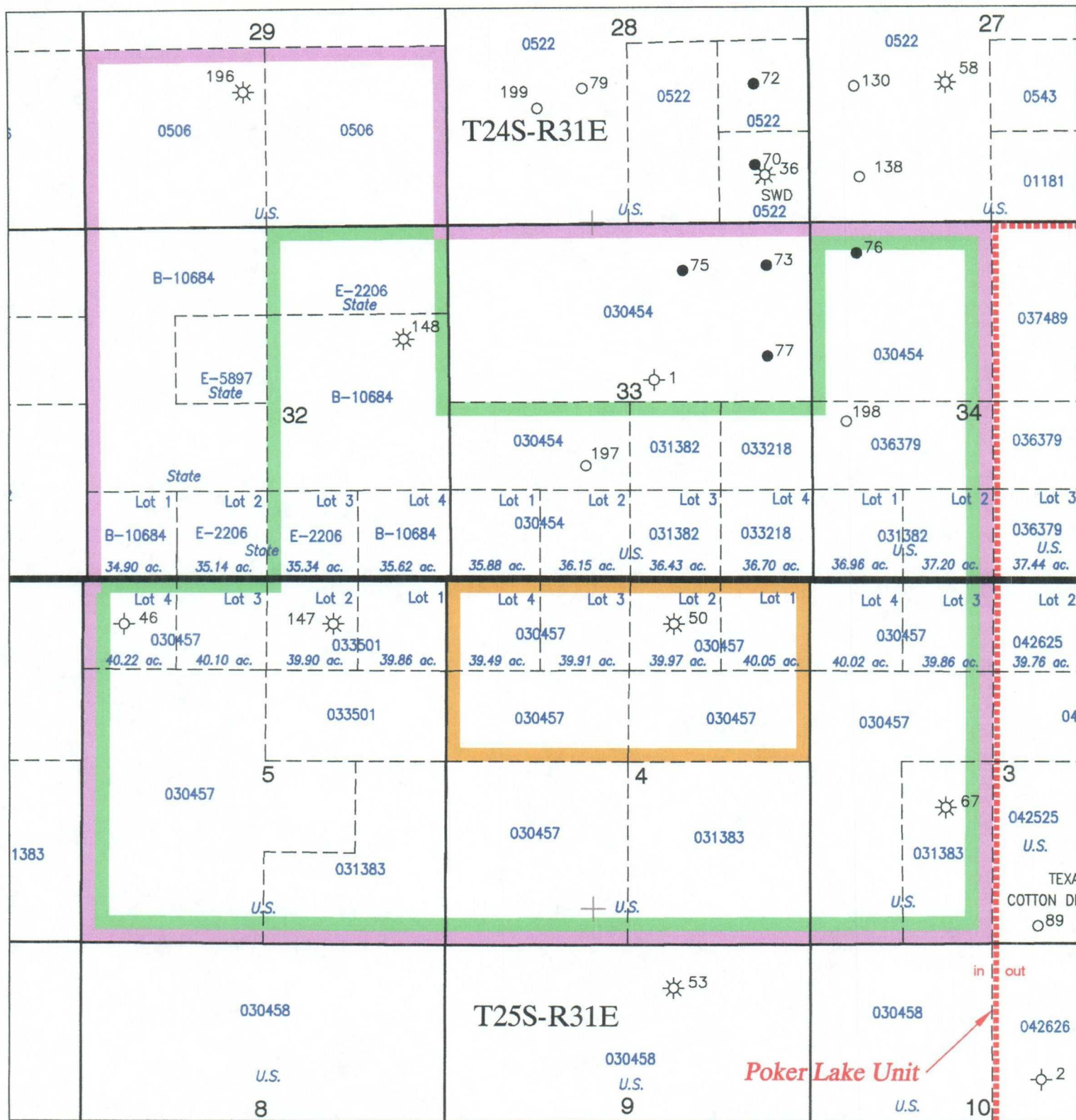
By: \_\_\_\_\_

COMMISSIONER OF PUBLIC LANDS


By: \_\_\_\_\_

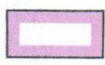
NEW MEXICO OIL CONSERVATION DIVISION

By: \_\_\_\_\_



 Initial Wolfcamp  
Participating Area

 First Revision to Initial Wolfcamp  
Participating Area - eff. (11-1-00) 2534.42 Ac.

 Second Revision to Initial Wolfcamp  
Participating Area - eff. (1-1-04) 3479.70 Ac.



**Bass Enterprises Production Co.**

**POKER LAKE UNIT**

Eddy County, New Mexico

**EXHIBIT "A"**

0 2000 4000 6000

SCALE IN FEET

DATE: 6-24-04 INTER./DRAFT. BY: WB/PO FILE: wfcmp initial & 1st rev.dwg pg1



# EXHIBIT "B"

## Second Revision to Initial Wolfcamp Participating Area Poker Lake Federal Unit Eddy County, New Mexico

<u>Tract No.</u>	<u>Lease No.</u>	<u>Description</u>	<u>Participating Acres</u>	<u>Percentage of Participation</u>	<u>Working Interest Owners</u>
2-A	NM-0506-A	Sec. 29: T24A-R31E SW/4 (160.00)	160.00	4.60%	Devon Energy Corp. – 100%
2-C	NM-0506	Sec. 29: T24S-R31E (SE/4 (160.00))	160.00	4.60%	Bass Enterprises Production Co. – 100%
22-A	NM-030457	Sec. 4: T25S-R31E Lots 1, 2, 3, 4, S/2 N/2, SW/4 (479.82) Sec. 5: T25S-R31E Lots 3, 4, S/2 NW/4, SW/4, NW/4 SE/4 (360.32) Sec. 3: T25S-R31E Lots 3, 4, S/2 NW/4, W/2 SW/4 (239.90)	1,079.62	31.03%	Bass Enterprises Production Co. – 100%
22-B	NM-031383	Sec. 4: T25S-R31E, SE/4 (360.32) Sec. 5: T25S-R31E, E/2 SE/4, SW/4 SE/4 (120) Sec. 3: T25S-R31E, E/2 SW/4 (80)	360.00	10.35%	Devon Energy Co. – 100%
22-C	NM-033501	Sec. 5: T25S-R31E Lots 1, 2, (79.76) S/2 NE/4 (80.00))	159.76	4.59%	Texaco Exploration Production, Inc -100%
58-A	E-2206-3	Sec. 32: T24S-R31E N/2 NE/4 (80.00) Lot 2 (35:14)	115.14	3.31%	Bass Enterprises Production Co. – 100%
58-B	E-2206-2	Sec. 32: T24S-R31E Lot 3 (35:34)	35.34	1.01%	Bass Enterprises Production Co. – 100%
71	E-5897	Sec. 32: T24S-R31E SE/4 NW/4 (40.00)	40.00	1.15%	Bass Enterprises Production Co. – 100%
67	B-10684	Sec. 32: T24S-R31E S/2 NE/4, E/2 SE/4, NW/4 SE/4 Lots 1, 4 (70.52) S/2 NE/4, N/2 SE/4, N/2 NW/4 (240.00) SW/4 NW/4, N/2 SW/4 (120.00)	430.52	12.37%	Bass Enterprises Production Co. – 100%

<u>Tract No.</u>	<u>Lease No.</u>	<u>Description</u>	<u>Participating Acres</u>	<u>Percentage of Participation</u>	<u>Working Interest Owners</u>
15	NM-033218	Sec. 33, T24S-R31E Lot 4, NE/4 SE/4 (76.70)	76.70	2.20%	Devon Energy Corp. – 100%
28-A	NM-030454	Sec. 33, T24S-R31E Lots 1, 2, N/2 SW/4 N/2 (472.03) Sec. 34, T24S-R31E NW/4 (160)	632.03	18.16%	Bass Enterprises Production Co. – 100%
28-B	NM 031382	Sec. 34, T24S-R31E Lots 1, 2, N/2 SW/4 (74.16) Sec. 33, T24S-R31E Lot 3, NW/4 SE/4 (76.43)	150.59	4.33%	Devon Energy Corp. – 100%
28-G	NM-036379	Sec.34: T24S-R31E N/2 SW/4 (80.00)	80.00	2.30%	Devon Energy Corp. – 100%
<b>Totals</b>			<b>3,479.70</b>	<b>100%</b>	
Total Federal Land:			2,858.70 Acres (82.15%)		
Total State Lands:			621.00 Acres (17.85%)		
Total Fee Lands:			0.00 Acres		
<b>Total</b>			<b>3,479.70 Acres</b>		

**BASS ENTERPRISES PRODUCTION CO.**

201 MAIN ST.  
FORT WORTH, TEXAS 76102-3131  
817/390-8400

August 31, 2004

**FEDERAL EXPRESS**

Bureau of Land Management  
Roswell District Office  
2909 W. 2<sup>nd</sup> Street  
Roswell, New Mexico 88201  
Attn: Ms. Alexis Swoboda

New Mexico State Land Office  
Commissioner of Public Lands  
310 Old Santa Fe Trail  
Santa Fe, New Mexico 87501  
Attention: Mr. Pete Martinez

New Mexico Oil Conservation Division  
1220 St. Francis  
Santa Fe, New Mexico 87505  
Attention: Roy Johnson

Re: Second Revision Initial Wolfcamp Participating Area  
W/2 Section 3, T25S-R31E  
Section 4, T25S-R31E  
Section 5, T25S-R31E  
Section 32, T24S-R31E  
S/2 Section 29, T24S-R31E  
Section 33, T24S-R31E  
W/2 Section 34, T24S-R31E  
Poker Lake Unit  
Eddy County, New Mexico

Gentlemen:

Bass Enterprises Production Co., as Unit Operator of the Poker Lake Unit Agreement, pursuant to the provisions of Section 11, thereof, respectfully submits for your approval the selection of the following described lands to comprise the Second Revision to the Participating Area for the Wolfcamp Formation in the Poker Lake Unit consisting of, more or less, 3,479.70 acres containing the above tracts more specifically described on the attached Exhibit "A".

In support of this application the following numbered items are attached hereto and made part hereof.

1. An ownership map (Exhibit "A") depicting the boundaries of the proposed Third Revision for the Wolfcamp Formation.
2. A schedule (Exhibit "B") identifying the lands entitled to participate in the unitized substances produced from the Wolfcamp Formation with the percentage of participation of each lease or tract indicated thereon.

August 31, 2004

Page 2

This proposed participating area revision is predicated upon the knowledge and information first obtained upon the completion of the Poker Lake Unit Well No. 196 located in the NE/4 SW/4 of Section 29, T24S-R31E on January 9, 2004. Therefore, Bass respectfully requests your approval of the hereinabove selection of lands to constitute the Second Revision to the Wolfcamp Participating Area to be effective January 1, 2004. Thank you very much for your cooperation in this regard and should you require additional information concerning same, please don't hesitate to contact the undersigned.

Sincerely,

  
J. Wayne Bailey

ACCEPTED AND AGREE this \_\_\_\_\_ day of \_\_\_\_\_, 2004.

BUREAU OF LAND MANAGEMENT

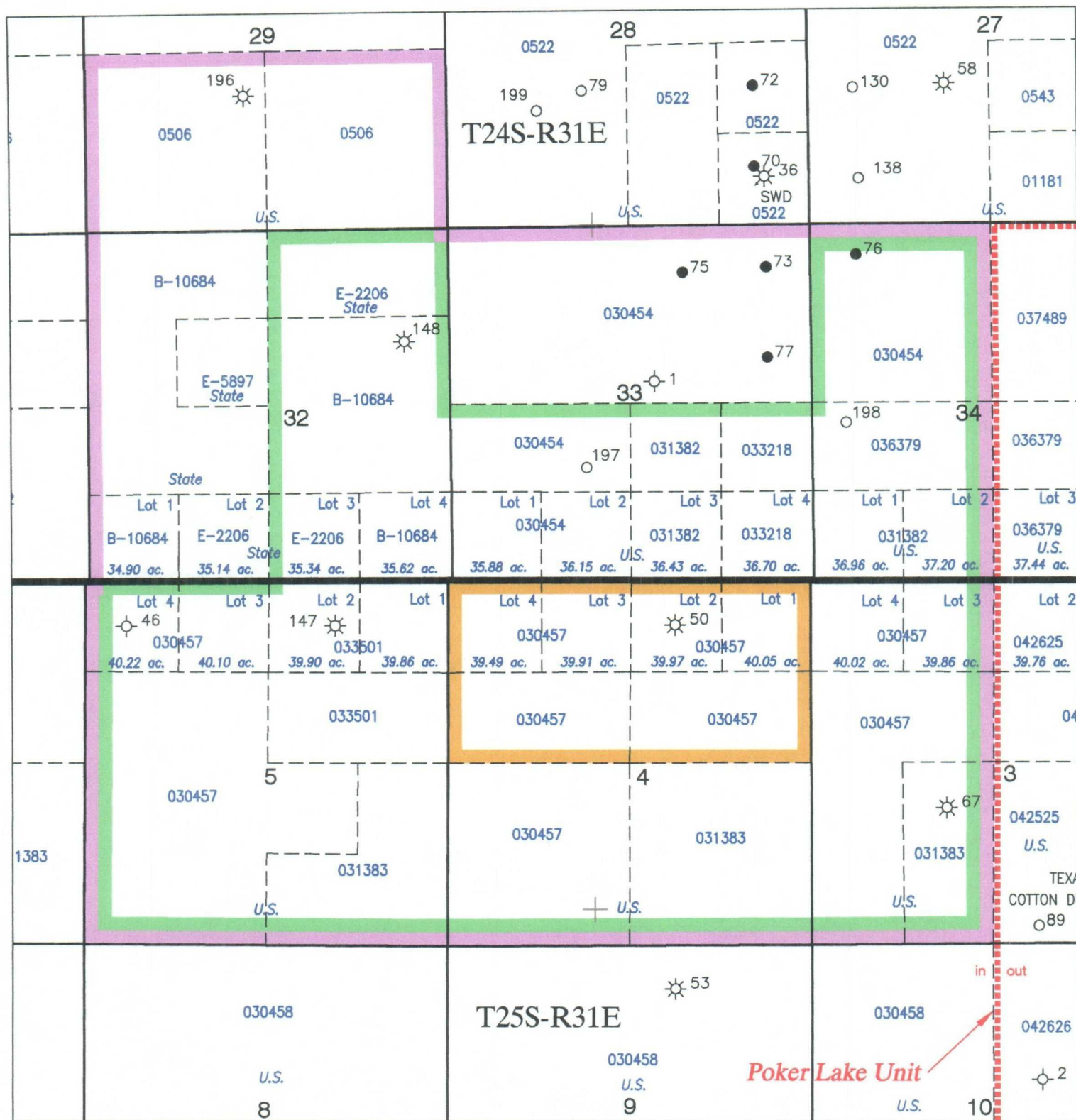
By: \_\_\_\_\_


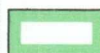

COMMISSIONER OF PUBLIC LANDS

By: \_\_\_\_\_

NEW MEXICO OIL CONSERVATION DIVISION

By: \_\_\_\_\_



-  Initial Wolfcamp Participating Area
-  First Revision to Initial Wolfcamp Participating Area - eff. (11-1-00) 2534.42 Ac.
-  Second Revision to Initial Wolfcamp Participating Area - eff. (1-1-04) 3479.70 Ac.



**Bass Enterprises Production Co.**

**POKER LAKE UNIT**

Eddy County, New Mexico

**EXHIBIT "A"**

0 2000 4000 6000

SCALE IN FEET

DATE: 6-24-04 INTER./DRAFT. BY: WB/PO FILE: wfcmp initial & 1st rev.dwg pg1

# EXHIBIT "B"

## Second Revision to Initial Wolfcamp Participating Area Poker Lake Federal Unit Eddy County, New Mexico

<u>Tract No.</u>	<u>Lease No.</u>	<u>Description</u>	<u>Participating Acres</u>	<u>Percentage of Participation</u>	<u>Working Interest Owners</u>
2-A	NM-0506-A	Sec. 29: T24A-R31E SW/4 (160.00)	160.00	4.60%	Devon Energy Corp. – 100%
2-C	NM-0506	Sec. 29: T24S-R31E (SE/4 (160.00))	160.00	4.60%	Bass Enterprises Production Co. – 100%
22-A	NM-030457	Sec. 4: T25S-R31E Lots 1, 2, 3, 4, S/2 N/2, SW/4 (479.82) Sec. 5: T25S-R31E Lots 3,4, S/2 NW/4, SW/4, NW/4 SE/4 (360.32) Sec. 3: T25S-R31E Lots 3, 4, S/2 NW/4, W/2 SW/4 (239.90)	1,079.62	31.03%	Bass Enterprises Production Co. – 100%
22-B	NM-031383	Sec. 4: T25S-R31E, SE/4 (360.32) Sec. 5: T25S-R31E, E/2 SE/4, SW/4 SE/4 (120) Sec. 3: T25S-R31E, E/2 SW/4 (80)	360.00	10.35%	Devon Energy Co. – 100%
22-C	NM-033501	Sec. 5: T25S-R31E Lots 1, 2, (79.76) S/2 NE/4 (80.00))	159.76	4.59%	Texaco Exploration Production, Inc -100%
58-A	E-2206-3	Sec. 32: T24S-R31E N/2 NE/4 (80.00) Lot 2 (35:14)	115.14	3.31%	Bass Enterprises Production Co. – 100%
58-B	E-2206-2	Sec. 32: T24S-R31E Lot 3 (35.34)	35.34	1.01%	Bass Enterprises Production Co. – 100%
71	E-5897	Sec. 32: T24S-R31E SE/4 NW/4 (40.00)	40.00	1.15%	Bass Enterprises Production Co. – 100%
67	B-10684	Sec. 32: T24S-R31E S/2 NE/4, E/2 SE/4, NW/4 SE/4 Lots 1, 4 (70.52) S/2 NE/4, N/2 SE/4, N/2 NW/4 (240.00) SW/4 NW/4, N/2 SW/4 (120.00)	430.52	12.37%	Bass Enterprises Production Co. – 100%

<u>Tract No.</u>	<u>Lease No.</u>	<u>Description</u>	<u>Participating Acres</u>	<u>Percentage of Participation</u>	<u>Working Interest Owners</u>
15	NM-033218	Sec. 33, T24S-R31E Lot 4, NE/4 SE/4 (76.70)	76.70	2.20%	Devon Energy Corp. – 100%
28-A	NM-030454	Sec. 33, T24S-R31E Lots 1, 2, N/2 SW/4 N/2 (472.03) Sec. 34, T24S-R31E NW/4 (160)	632.03	18.16%	Bass Enterprises Production Co. – 100%
28-B	NM 031382	Sec. 34, T24S-R31E Lots 1, 2, N/2 SW/4 (74.16) Sec. 33, T24S-R31E Lot 3, NW/4 SE/4 (76.43)	150.59	4.33%	Devon Energy Corp. – 100%
28-G	NM-036379	Sec.34: T24S-R31E N/2 SW/4 (80.00)	80.00	2.30%	Devon Energy Corp. – 100%
<b>Totals</b>			<b>3,479.70</b>	<b>100%</b>	
Total Federal Land:			2,858.70 Acres (82.15%)		
Total State Lands:			621.00 Acres (17.85%)		
Total Fee Lands:			0.00 Acres		
<b>Total</b>			<b>3,479.70 Acres</b>		

**WELL DATABASE KEY**  
**For**  
**DELAWARE "C" PARTICIPATING AREA**  
**REVISED 4-2004**

**SECTION-TOWNSHIP-RANGE**

**WELL NAME / ORDER**

Section 30-23S-30E

Gold Rush "30" Federal No. 2  
Gold Rush "30" Federal No. 7

Section 31-23S-30E

Gold Rush "31" Federal No. 1  
Gold Rush "31" Federal No. 2  
Remuda Basin '31' State No. 3  
Poker Lake Unit No. 144  
Poker Lake Unit No. 145  
Poker Lake Unit No. 146  
Poker Lake Unit No. 149  
Poker Lake Unit No. 161  
Remuda Basin '31' St. Com No. 1

Section 32-23S-30E

Poker Lake Unit No. 137  
Poker Lake Unit No. 140  
Poker Lake Unit No. 141  
Poker Lake Unit No. 165

Section 5-24S-30E

Poker Lake Unit No. 166  
Poker Lake Unit No. 167  
Poker Lake Unit No. 176

Section 6-24S-30E

Poker Lake Unit No. 150  
Poker Lake Unit No. 151  
Poker Lake Unit No. 152  
Poker Lake Unit No. 153  
Poker Lake Unit No. 154  
Poker Lake Unit No. 155  
Poker Lake Unit No. 156  
Poker Lake Unit No. 157  
Poker Lake Unit No. 184

Section 7-24S-30E

Poker Lake Unit No. 158  
Poker Lake Unit No. 159  
Poker Lake Unit No. 180  
Poker Lake Unit No. 181  
Poker Lake Unit No. 182  
Poker Lake Unit No. 190

Section 8-24S-30E

Poker Lake Unit No. 59

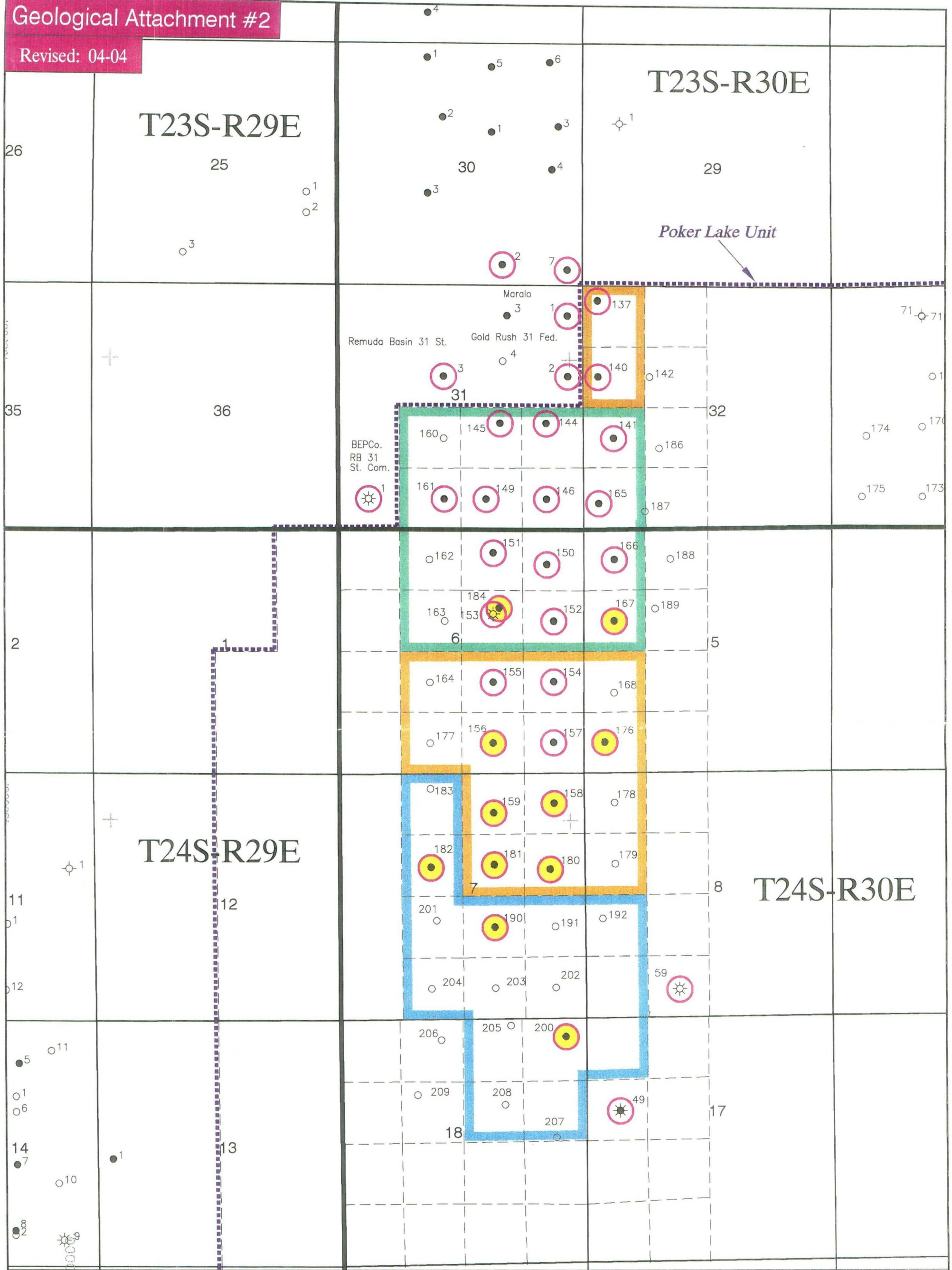
Section 17-24S-30E

Poker Lake Unit No. 49

Section 18-24S-30E

Poker Lake Unit No. 200





- Well Data Previously Submitted
- Well Data Submitted for Proposed Third Revision
- Initial PA (effective 9-9-97)
- First Revision (effective 11-1-99)
- Second Revision (effective 7-1-01)
- Proposed Third Revision (effective 2-1-03)



**Bass Enterprises Production Co.**  
POKER LAKE UNIT  
Eddy County, New Mexico

**WELL DATABASE KEY MAP**  
FOR DELAWARE "C" PARTICIPATING AREA

SCALE IN FEET

DATE: 4-20-04 DRAFT BY: PO FILE: dlwr\_c key map.dwg pg1