



Drilling Pit
Southeast New Mexico



Drilling Pit
Southeast New Mexico



This is what landfarms will look like if allowed to take drill cuttings and non remediable waste streams.



Closed drilling pit several years old.
Barren wasteland showing
no re-vegetation.



Landfarm several years old
attempting to landfarm tank bottoms.



Drilling pit many years old.



Typical Drilling Pit
Southeast New Mexico



Drilling pit several years after closure
No re-vegetation
Plastic pit liner material



Neighboring land to closed drilling pit
Wind erosion, including plastic liner
material



Closed drilling pit
No re-vegetation



Southeast New Mexico landscape
No re-vegetation at drilling sites

Oil Conservation Division approved
landfarms in Monument Draw
watercourse



Oil Conservation Division approved
landfarm
Offsite erosion

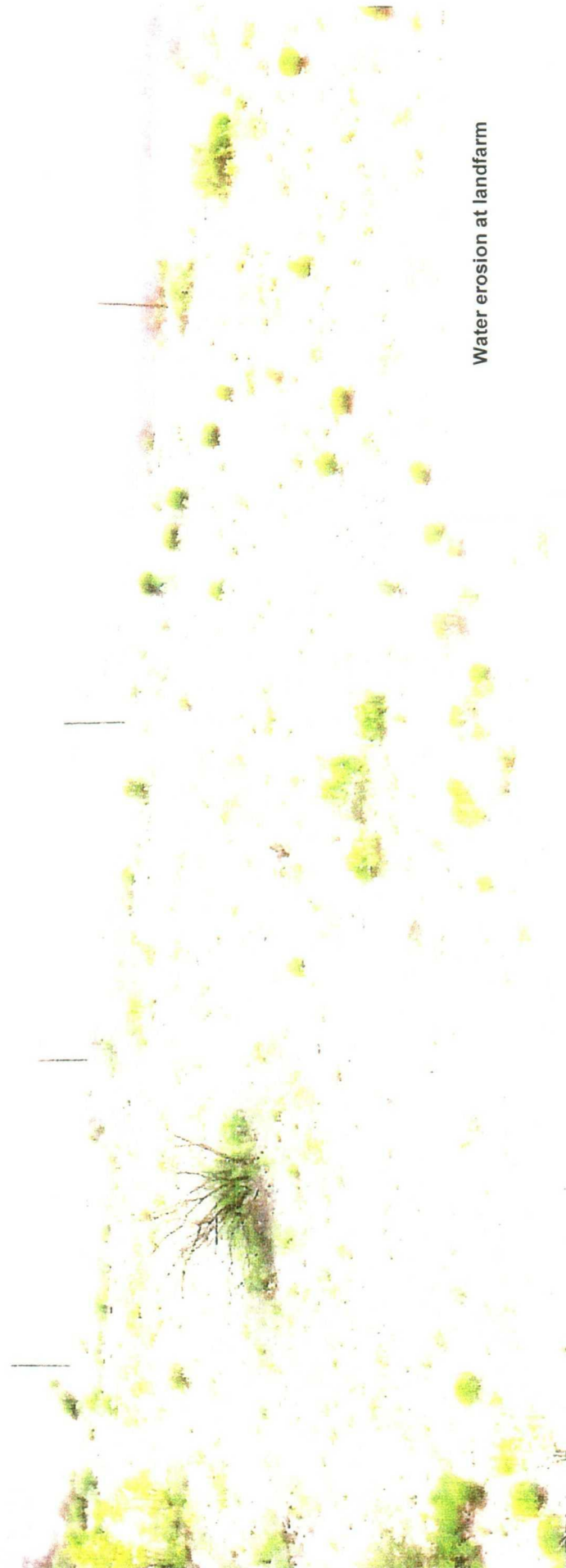




Collected water and erosion at
landfarm



Wind and water erosion at
landfarm



Water erosion at landfarm



Run-off water from landfarm