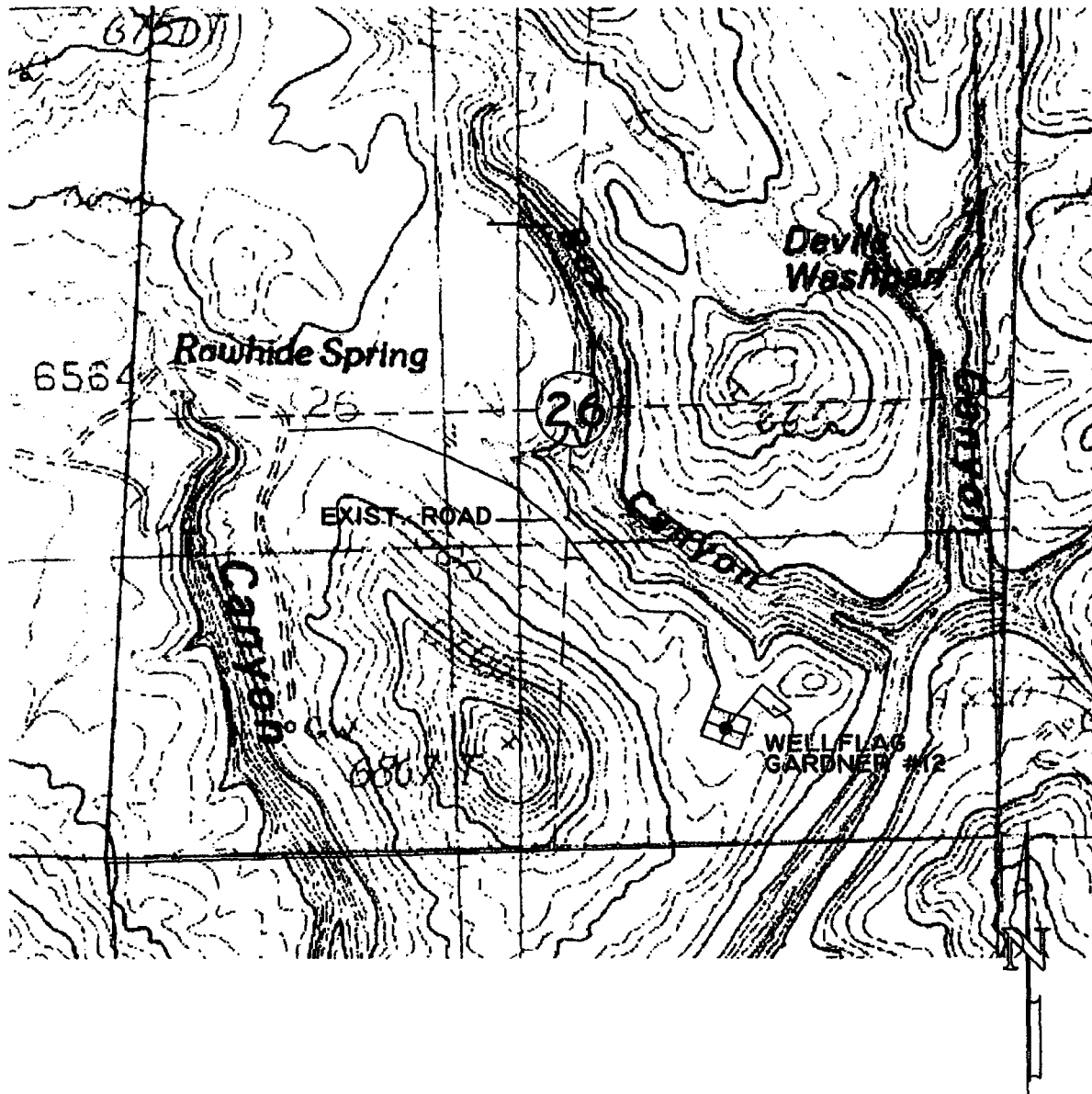


BEFORE THE OIL CONSERVATION DIVISION  
Santa Fe, New Mexico  
Case No. 13794 Exhibit No. 4  
Submitted by:  
PEOPLES ENERGY PRODUCTION - TEXAS L.P.  
Hearing Date: October 26, 2006



0 500 1000  
SCALE: 1"=1000'

LEASE: GARDNER #12

FOOTAGE: 700' FSL, 1665' FEL

SEC. 26 TWN. 32 N RNG. 9 W N.M.P.M.

LATITUDE: 36°57'00.6" LONGITUDE: 107°44'46.9"

ELEVATION: 6544

PEOPLES ENERGY PRODUCTION  
HOUSTON, TEXAS

SURVEYED: 6/14/08

REV. DATE:

APP. BY R.P.

DRAWN BY: T.G.

DATE DRAWN: 6/14/08

FILE NAME: 5256C02

UNITED  
FIELD SERVICES INC.

P.O. BOX 3651  
FARMINGTON, NM 87499  
OFFICE: (505) 334-0408