

DISTRICT I
1825 N. FRENCH DR., ROBBIE, NM 88240

DISTRICT II
1301 W. GRAND AVENUE, ARIZONA, NM 88210

DISTRICT III
1000 Rio Brazos Rd., Aztec, NM 87410

DISTRICT IV
1825 S. ST. FRANCIS DR., SANTA FE, NM 87505

State of New Mexico
Energy, Minerals and Natural Resources Department

OIL CONSERVATION DIVISION
1220 SOUTH ST. FRANCIS DR.
Santa Fe, New Mexico 87505

Form C-102
Revised October 12, 2005
Submit to Appropriate District Office
State Lease - 4 Copies
Fee Lease - 3 Copies

WELL LOCATION AND ACREAGE DEDICATION PLAT

☐ AMENDED REPORT

API Number		Pool Code	Pool Name	
Property Code	Property Name LAWRENCE 29		Well Number 1	
OGRID No.	Operator Name CHESAPEAKE OPERATING, INC.		Elevation 3796'	

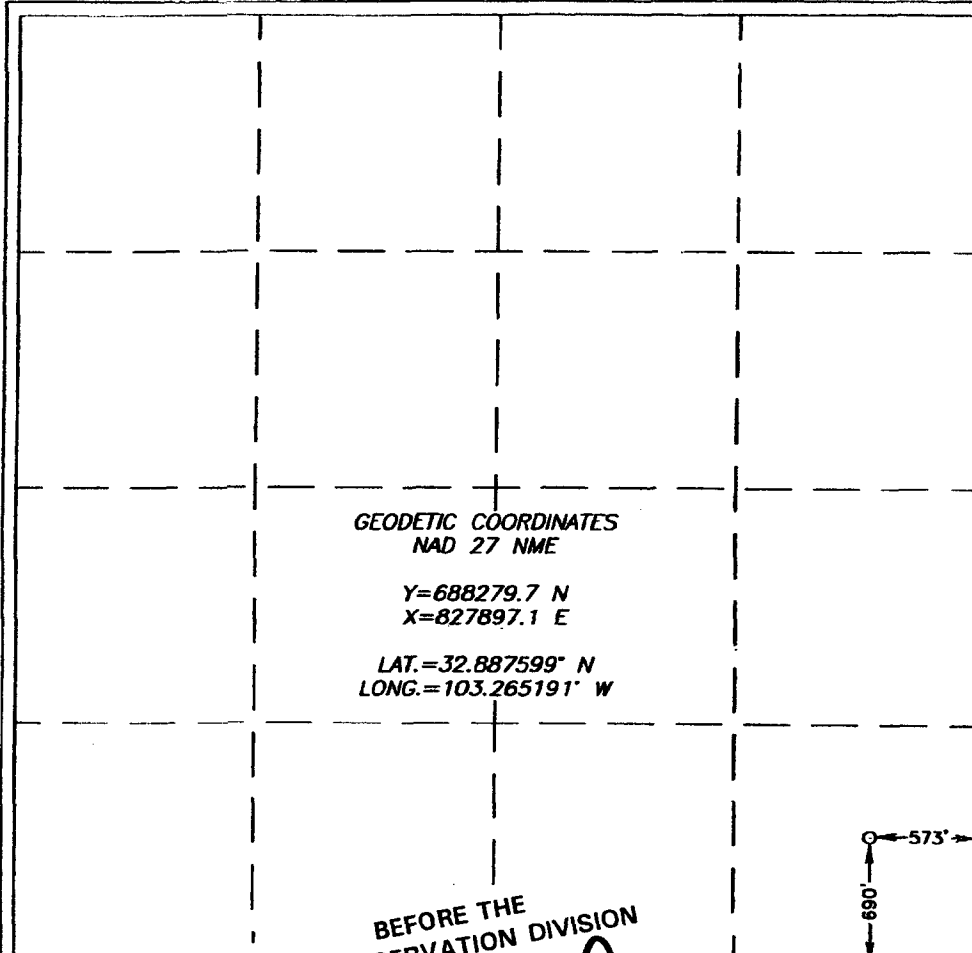
Surface Location

UL or lot No.	Section	Township	Range	Lot Idn	Feet from the	North/South line	Feet from the	East/West line	County
P	29	16-S	37-E		690	SOUTH	573	EAST	LEA

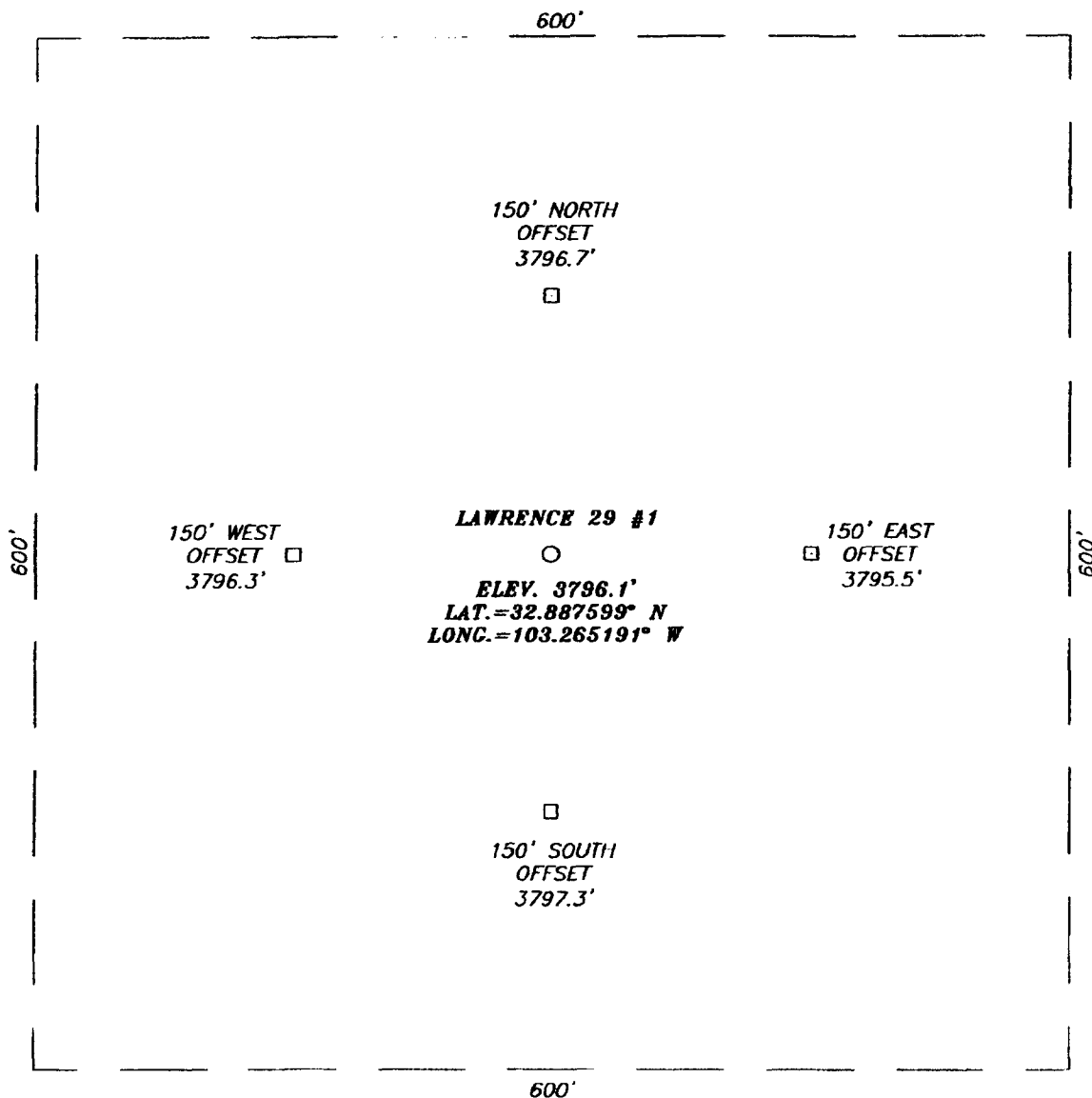
Bottom Hole Location If Different From Surface

UL or lot No.	Section	Township	Range	Lot Idn	Feet from the	North/South line	Feet from the	East/West line	County
Dedicated Acres		Joint or Infill		Consolidation Code		Order No.			

NO ALLOWABLE WILL BE ASSIGNED TO THIS COMPLETION UNTIL ALL INTERESTS HAVE BEEN CONSOLIDATED
OR A NON-STANDARD UNIT HAS BEEN APPROVED BY THE DIVISION

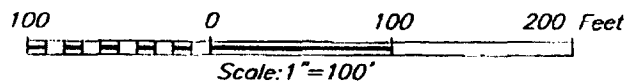
	<p>OPERATOR CERTIFICATION</p> <p>I hereby certify that the information herein is true and complete to the best of my knowledge and belief, and that this organization either owns a working interest or unleased mineral interest in the land including the proposed bottom hole location or has a right to drill this well at this location pursuant to a contract with an owner of such mineral or working interest, or to a voluntary pooling agreement or a compulsory pooling order heretofore entered by the division.</p> <p>Signature _____ Date _____</p> <p>Printed Name _____</p>
	<p>SURVEYOR CERTIFICATION</p> <p>I hereby certify that the well location shown on this plat was plotted from field notes of actual surveys made by me or under my supervision, and that the same is true and correct to the best of my belief.</p> <p>SEPTEMBER 20, 2006</p> <p>Date Surveyed _____ MR</p> <p>Signature & Seal of Professional Surveyor</p> <p><i>Ronald J. Edson</i> 9/26/06 06.11.1459</p>
	<p>Certificate No. CARY EDSON 12641 RONALD J. EDSON 3239</p>
	<p>BEFORE THE OIL CONSERVATION DIVISION Case No. 13821 Exhibit No. 2 Submitted By: Chesapeake Operating Hearing Date: November 30, 2006</p>

SECTION 29, TOWNSHIP 16 SOUTH, RANGE 37 EAST, N.M.P.M.,
LEA COUNTY, NEW MEXICO



DIRECTIONS TO LOCATION

FROM MILE MARKER 66 ON ST. HWY. #18, GO NORTHWEST APPROX. 0.15 MILES. TURN EAST (THROUGH GATE) AND GO EAST APPROX. 0.5 MILES. TURN RIGHT AND GO SOUTH APPROX. 0.2 MILES. TURN LEFT AND GO SOUTHEAST APPROX. 0.15 MILES TO A GATE. CONTINUE IN AN EASTERLY DIRECTION APPROX. 0.7 MILES. TURN LEFT AND GO NORTH APPROX. 0.9 MILES. TURN RIGHT AND GO EAST APPROX. 0.3 MILES. THIS LOCATION IS APPROX. 400 FEET NORTH.



CHESAPEAKE OPERATING, INC.

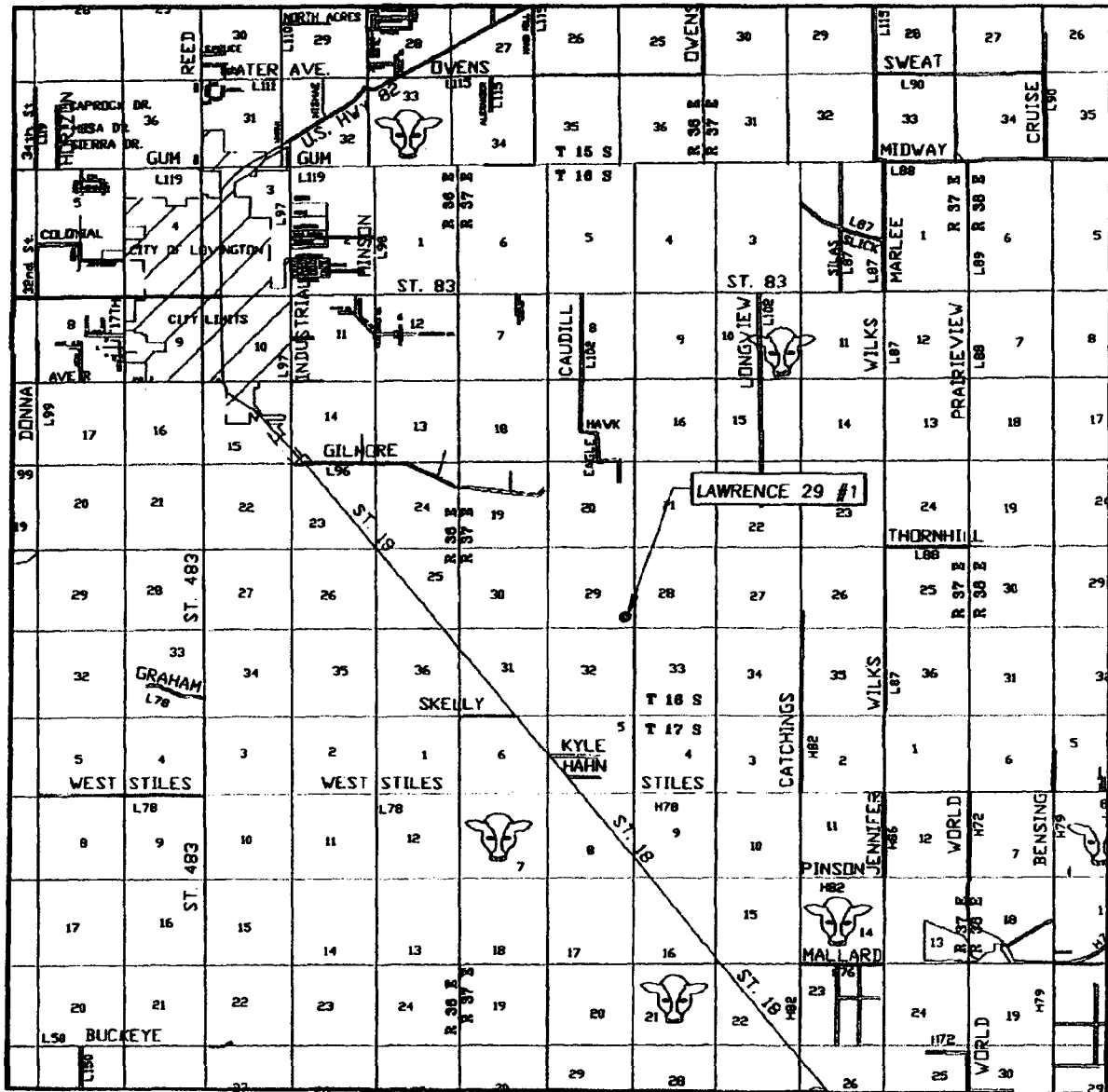
LAWRENCE 29 #1
 LOCATED 690 FEET FROM THE SOUTH LINE
 AND 573 FEET FROM THE EAST LINE OF SECTION 29,
 TOWNSHIP 16 SOUTH, RANGE 37 EAST, N.M.P.M.,
 LEA COUNTY, NEW MEXICO.

Survey Date: 09/20/06	Sheet 1 of 1 Sheets
W.O. Number: 06.11.1459	Dr By: M.R. Rev 1: N/A
Date: 09/27/06	Disk: CD#6 06111459 Scale: 1"=100'



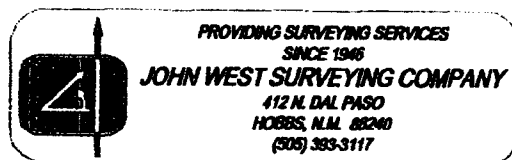
PROVIDING SURVEYING SERVICES
 SINCE 1948
JOHN WEST SURVEYING COMPANY
 412 N. DAL PASO
 HOBBS, N.M. 88240
 (505) 383-3117

VICINITY MAP

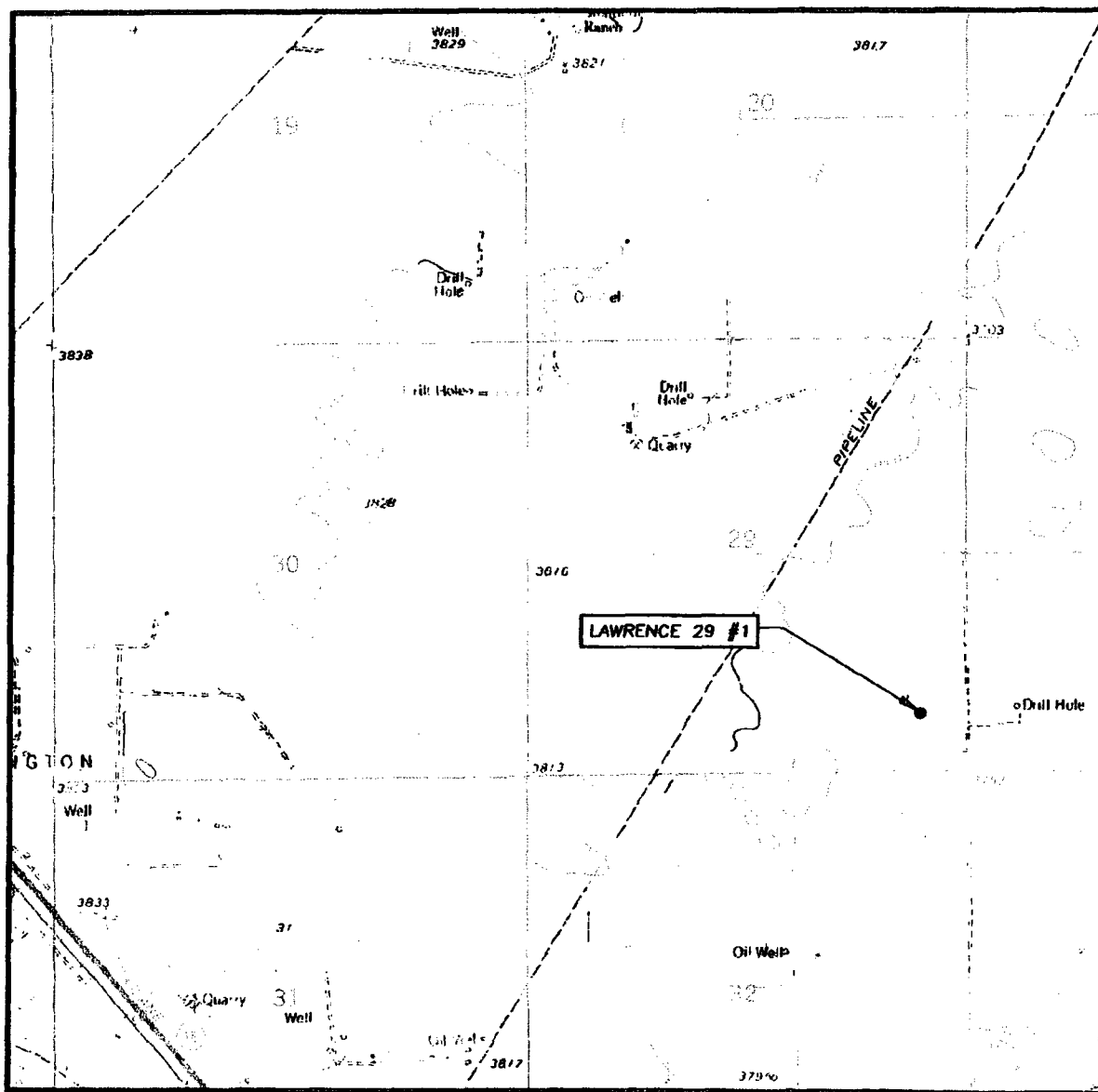


SCALE: 1" = 2 MILES

SEC. 29 TWP. 16-S RGE. 37-E
 SURVEY N.M.P.M.
 COUNTY LEA STATE NEW MEXICO
 DESCRIPTION 690' FSL & 573' FEL
 ELEVATION 3796'
 OPERATOR CHESAPEAKE OPERATING, INC.
 LEASE LAWRENCE 29



LOCATION VERIFICATION MAP



SCALE: 1" = 2000'

CONTOUR INTERVAL:
LOVINGTON, N.M. - 5'

SEC. 29 TWP. 16-S RGE. 37-E

SURVEY N.M.P.M.

COUNTY LEA STATE NEW MEXICO

DESCRIPTION 690' FSL & 573' FEL

ELEVATION 3796'

OPERATOR CHESAPEAKE
OPERATING, INC.

LEASE LAWRENCE 29

U.S.G.S. TOPOGRAPHIC MAP
LOVINGTON, N.M.

