

JTM GEOLOGICAL SERVICES, INC
 4908 76th ST
 LUBBOCK TEXAS 79424
 (806) 793-8471

COMPANY YATES PETROLEUM CORPORATION
 WELL DOOR BIW STATE NO. 1-Y
 FIELD BIG DOG STRAWN SOUTH
 LOCATION 2310' FSL & 610' FEL
 SECTION 1, T16S, R35E
 COUNTY LEA STATE NM
 ELEVATION G.L. 3986' K.B. 3986'
 DEPTH LOGGED 4200' TO: 11630'
 DATE LOGGED 08-02-2006 TO 09-22-2006
 LOGGING GEOLOGIST M. C. JONES, R. MONTALVO
 UNIT NO. 1 MOBILE PHONE 505-385-6981
 DRILLING CONTRACTOR PATTERSON UTI 497
 DRLG FLUID 4200'-6985': 10 LB BRINE, BASTE FOR WT AT 6100'
WT: 10.3 TO 12.6 LB/GAL, 40+ VIS BELOW 6100'.
6985'-9650': CUT BRINE, WT: 9.2-9.5 LB/GAL
9650' TO TD: SALT GEL & STARCH, WT 9.3-9.6 LB/GAL, VIS 38+, FILTRATE:

Abbreviations:

NB...New Bit
 CO...Circ Out
 NR...No Returns
 TG...Trip Gas
 WOB...Wt on Bit
 RPM...Strokes/Min
 SG...Survey Gas

DST...Dihl Stem Test
 DS...Directional Survey
 CG...Connction gas
 LAT...Logged After Trip
 PP...Pump Pressure
 SPM...Strokes/Min
 DTG...Down Time Gas

Mud Data

WT...Weight
 PL...Addity
 CH...Chemicals

V...Viscosity
 F...Filtrate

Lithology Symbols:

	Anhydrite		Sandstone
	Silstone		Chert
	Dolomite		Conglomerate
	Coal		Shale
	Granite		Limestone
	Sandstone		Bentonite

Accessories

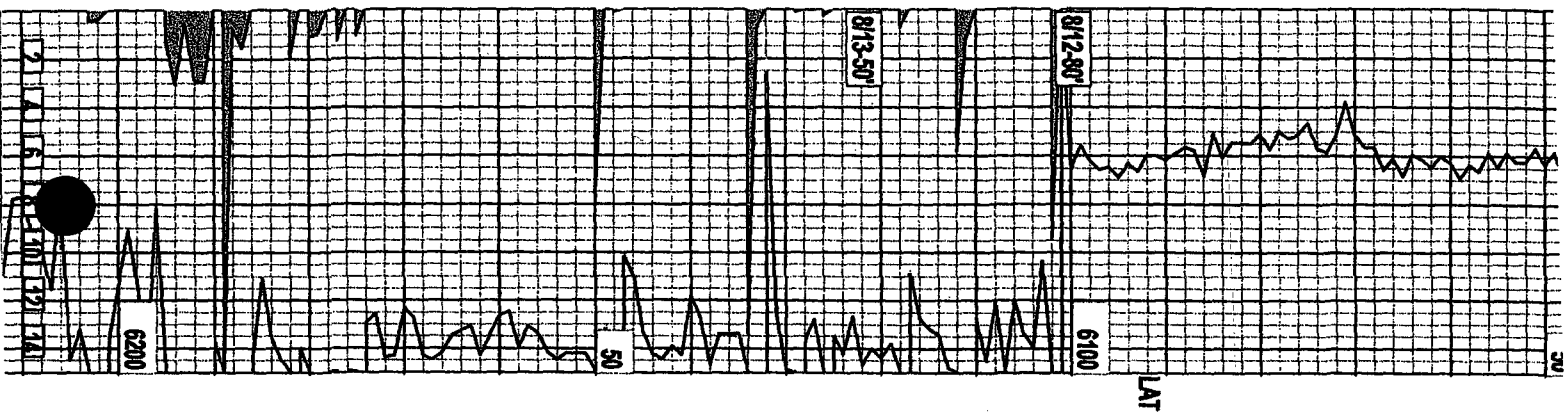
Gypsumite
 Pyrite
 Fossils
 Oolites

Gas Chromatograph Analysis:

H.W.
 C1 _____
 C2 _____
 C3 _____
 C4 _____
 C5 _____

DRILLING RATE MIN/FT	LITHOLOGY	DESCRIPTIONS / REMARKS	HOTWIRE / CHROMATOGRAPH

SEP 13 3/8" CASTING AF
 1895' DRLG 12 1/4"



anhy incl lmy ip tr suc
frag nfsc

SH: dk brn dl brn hd
blky non calc vf pyr sl
carb ip

DOL: brn tn gywh vf-fx
suc ip arg tr anhy incl
sl lmy vf pyr pred tite
nfsc

TRIP, LAID DOWN BHA, PU
6 8" DCS & 50 JTS HVY
WT DP. BIT 3: 1078' IN
106 HRS. NB 4: VAREL,
CR45, 3X16'S.

DOL: lt gy gywh lt brn
tn frm-hd vfx ip cln sl
mod lmy tr anhy incl &
free anhy in smpl abndt
cht incl nfsc

DOL: brn lt brn tn gywh
frm-hd vf-fx cln abndt
mlky-clr cht incl

CEN: tn mlky brn tmsp
ip cln abndt in in dol

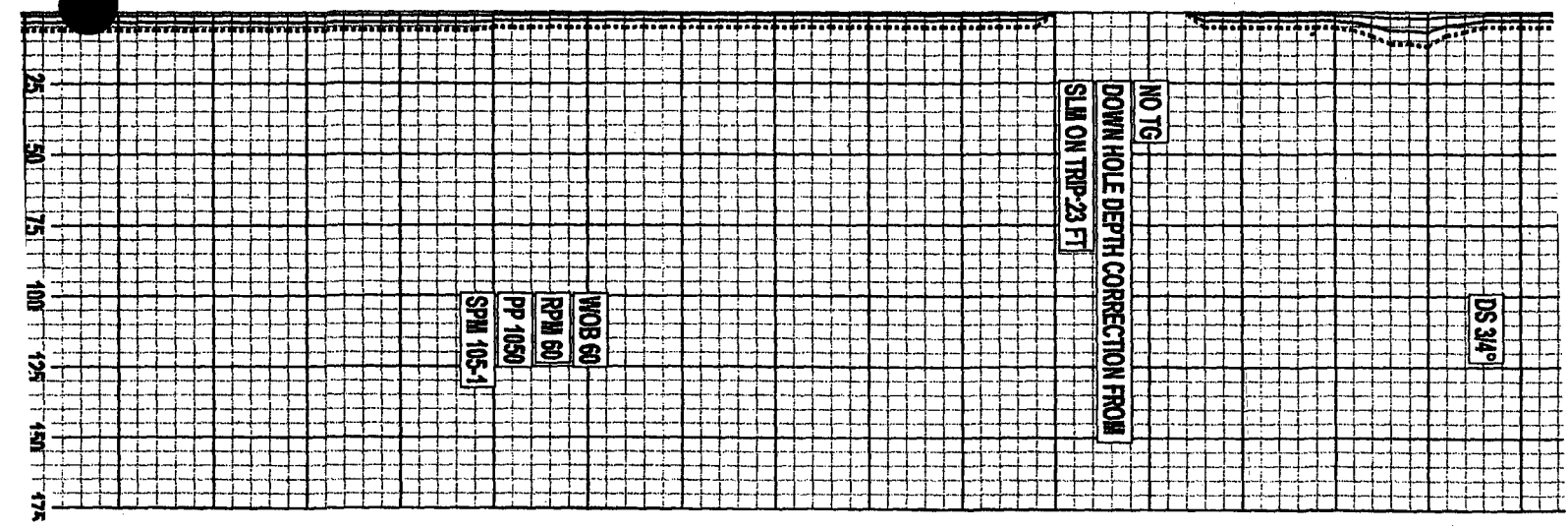
WT V PH CHL
12.6 49 10 182M
SOL 21.3%

DOL: gywh lt gy brn tn
frm-hd fx pred arg w/
hvy cht incl & free
cht in smpl pred lmy
nfsc

DOL: brn tn lt brn gywh
frm hd dns fx pred silc
cln lmy ip tr anhy incl
ip nfsc

TR IS

DOL: brn tn lt brn frm
hd mic-fx pred finly suc
frag tr c/r adms v+1.

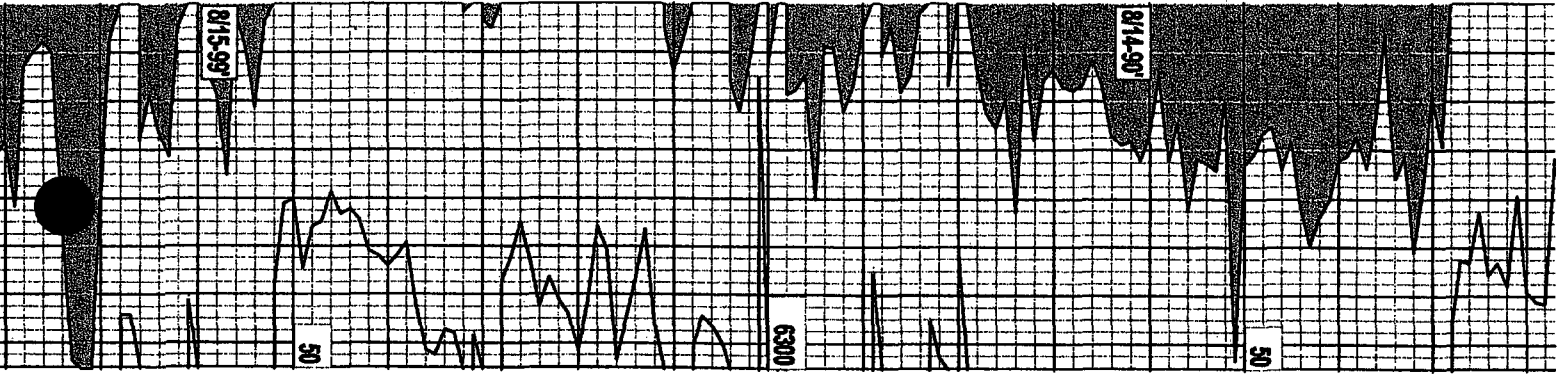


DS 34°

NO TG

DOWN HOLE DEPTH CORRECTION FROM
SLIM ON TRIP-23 FT

WOB 60
RPM 60
PP 1050
SPM 105-1



IS: lt brn brn tn gywh
 lt gy frm-hd fx ip pred
 suc frag w/ abnt mlky-
 brn cht incl cln sl
 dolmc ip nfsc

CHF: mlky tn brn lt brn
 cln sl lmy ip

WT V F CK PH CHL
 12.6 49 38 3/32 10 178M
 SOL 21.6s

IS: wh off wh lt brn tn
 frm-hd fx sl ary pred
 v chty + abnt mlky-tn
 free cht in sampls

IS: wh tn lt brn brn frm
 hd cln pred abnt wh
 chky frag tr free cly
 in sampl abnt cht incl
 nfsc

NO SAMPLES CAUGHT FROM
 6282'-93' SHAKER DOWN
 DUE TO ELEC SHORT AFTER
 STORM

IS: brn tn lt brn gywh
 frm-hd fx pred silc
 abnt cht incl ary ip
 tr suc txt ip nfsc

FR DOL

CHF: clr tn mlky brn v
 hd cln pred incl in ls
 abnt free lse cht in
 sampls lmy

WT V F CK PH CHL
 12.5 46 40 3/32 10 178M
 SOL 24.3s

SS: gy gywh wh vfg sbang
 to sbnd mod strd anlyc
 dol cnt ip vf pyr nfsc

AMHY: gy gywh frm-hd opq
 dolmc ip

TEB AT 6383'

WOB 60
 RPM 60
 PP 1050
 SPM 105-2

WOB 60
 RPM 60
 PP 1350
 SPM 105-2
 DS 134°