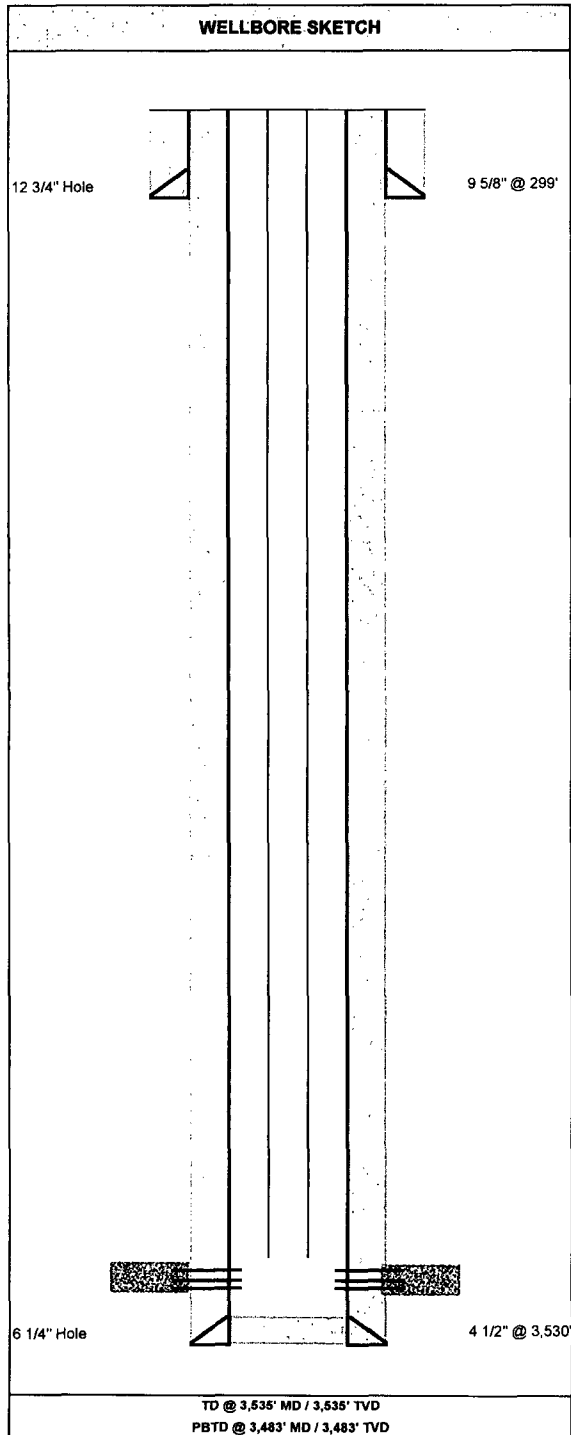


devon	OPERATOR: Devon Energy Prod. Co.	LEASE / WELL: NEBU 233	SURFACE LOCATION: 1,400' FNL & 1' FWL SW NW, Sec. 23, T31N, R7W	BOTTOM HOLE LOCATION: 1365' FNL & 32.6' FWL Same
	DRILLING RIG:	FORMATION: Pictured Cliffs	COUNTY / STATE: San Juan	AFE #: 116568
	COMPLETION RIG:	PROPERTY #A: 018948-010	PROPERTY #B:	API#: 30-045-32800 SPUD DATE: 5/20/2005

WELL DATA			
DIRECTIONAL	<input type="checkbox"/>	STRAIGHT	<input checked="" type="checkbox"/>
KOP:		TVD	
BEGIN BUILD	deg @	MD	
BEGIN HOLD	deg @	MD	
BEGIN DROP	deg @	MD	
BEGIN VERTICAL	deg @	MD	

TUBULAR DATA						
Tubulars	Size	Weight	Grade	Thread	MD	TVD
DRIVE PIPE						
CONDUCTOR						
SURFACE	9 5/8"	32#	H-40	ST&C	299'	
INTERMEDIATE						
PRODUCTION	4 1/2"	11.6#	J-55	LT&C	3,530'	
PROD LINER						
TUBING	2 3/8"	4.7#	J-55	LT&C	3,425'	

WELLHEAD DATA	
KB ELEVATION	GROUND ELEVATION 6,420'
FIELD: San Juan	



EQUIPMENT DESCRIPTION	
CEMENT DETAILS:	
9 5/8" Cement casing with 175 sx Class "B" w/2%CaCl2, .25# Flocele.	
4 1/2" Cement casing with 375 sx 50/50 POZ, 2% Gel, .2% Versaset, .1% Diacel LWL, tail w/75 sx (19 bbls) 50/50 POZ, 2% Gel, .2% Versaset, .1% Diacel LWL.	
TUBING DETAILS: PUMP OFF BIT SUB, 1-JT 2-3/8" TBG	
1-F-NIPPLE 1.78", 110 JTS 2-3/8" TBG, EOT3425.12; F-NIPPLE 3393'	
S. Los Pinos Fruitland Sand Pictured Cliffs	
Perforated	3369'-70', 3380'-81', 3400'-01', 3416'-17', 3436'-37', 4 SPF, 120 phasing, 0.34", 20 holes
Frac'd w/119.6 bbls Delta 140 XL gel w/200,100# 20/40 Brady sand. Sand ramped 1.0 - 3.0 ppg.	
Average pressure 1667 psi, Avg rate 32.4 bpm (max 2919 psi). F.G. = 0.42 psi/ft	
COMMENTS:	
Working Interest:	25.00%
Net Revenue Interest:	0.00%
DATE:	August 16, 2005
PREPARED OR REVISED BY:	
Jeff Williford	

ACTUAL

DIRECTIONS TO LOCATION: From the town of Arboles, CO, take State HWY 151 to CR 330. Turn left on CR 330 and go south to CR 4020 traveling 7.1 miles total. Take 4018 south for 5.0 miles passing Middle Mesa CDP. Turn left on Trunk B and travel 1.2 miles to location road. Travel on road for 0.6 miles to location.