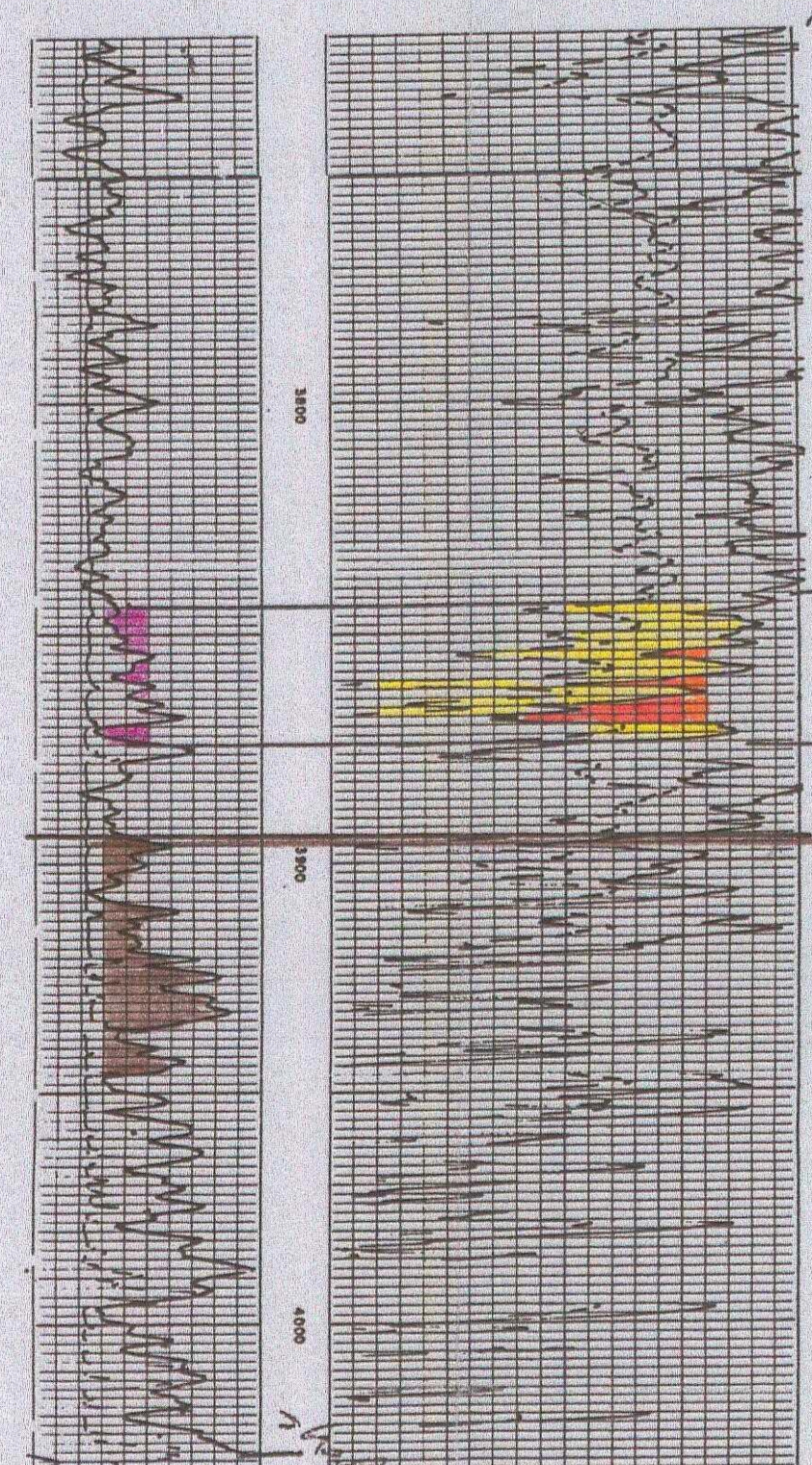


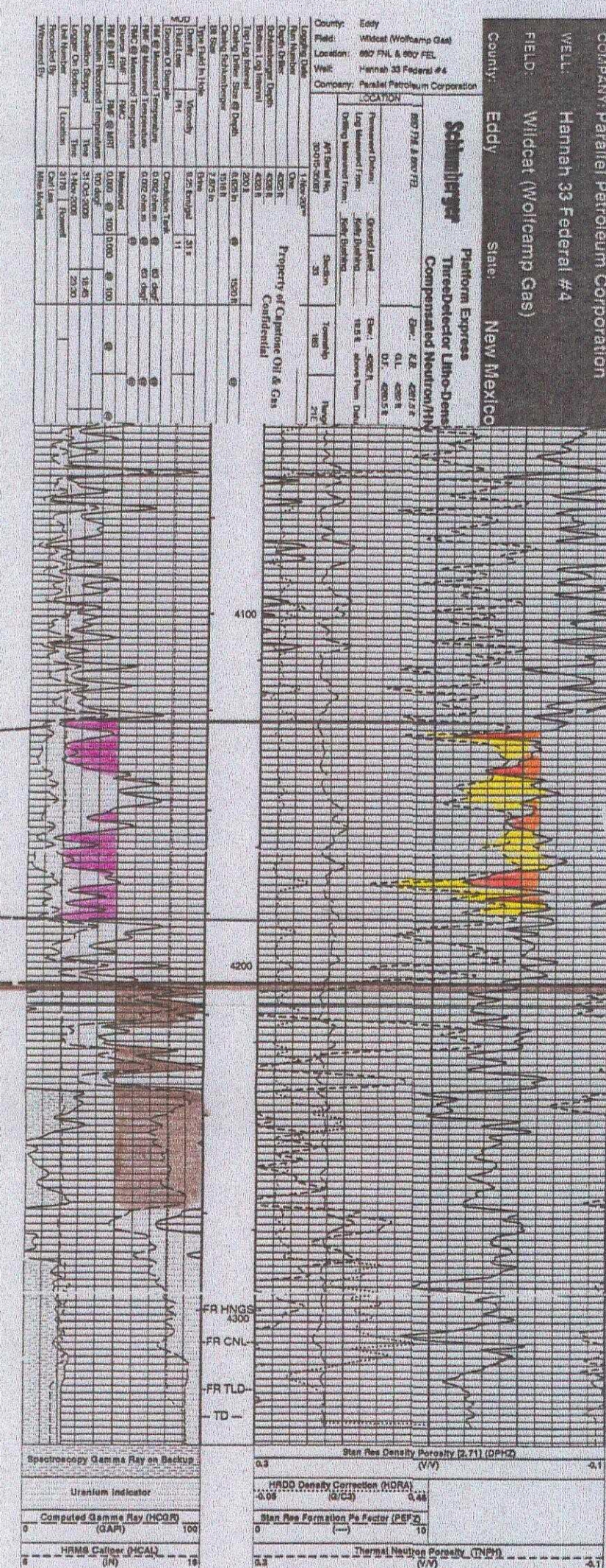
COMPANY: JACO PRODUCTION COMPANY		WELL: WEST HOLE UNIT #1		FIELD: WILDCAT		COUNTY: EDDY		STATE: NEW MEXICO	
FED #1 LOCATION: WILDCAT		WELL: WEST HOLE UNIT #1		FIELD: WILDCAT		COUNTY: EDDY		STATE: NEW MEXICO	
COMPANY: JACO PRODUCTION COMPANY		WELL: WEST HOLE UNIT #1		FIELD: WILDCAT		COUNTY: EDDY		STATE: NEW MEXICO	
FED #1 LOCATION: WILDCAT		WELL: WEST HOLE UNIT #1		FIELD: WILDCAT		COUNTY: EDDY		STATE: NEW MEXICO	
COMPANY: JACO PRODUCTION COMPANY		WELL: WEST HOLE UNIT #1		FIELD: WILDCAT		COUNTY: EDDY		STATE: NEW MEXICO	



ORIGINAL WELL P&A 6/74

4/03 Mack Energy changed well name to Golden Dear State #1

5/03 Mack Energy re-entered well and set 5 1/2" casing @ 4242' (last OCD report filed)



WOCU

WOLFCAMP PAY (HORIZONTAL TARGET ZONE)

PERF Wolfcamp: 4283' - 4340' with 14 shots
Az with 2,000 gals
Frac with 15,000 gals gel water + 20,000 # sand
IP CAOF 606 mcf/gpd

10/1979
PERF Wolfcamp: 4295' - 4384' with 9 shots
Az with 2,500 gals (swb dry w/gas TSTM after acid)
Frac with 60,000 gals gel water + 67,500 # 20/40 sand
Swb + Flow back load- unable to maintain flow
P&A 5/1982

Testing

P&A 11/29/2000

Parallel Petroleum Corp.
NMOCD Case No. 13862

Testing
ATTACHMENT G
CASE NO. 13862

PARALLEL
PETROLEUM CORPORATION

WALNUT DRAW (WOLFCAMP) UNIT
Eddy County, New Mexico

WOLFCAMP STRATIGRAPHIC CROSS SECTION A-A'

12/2006 Geology by: JE / MM