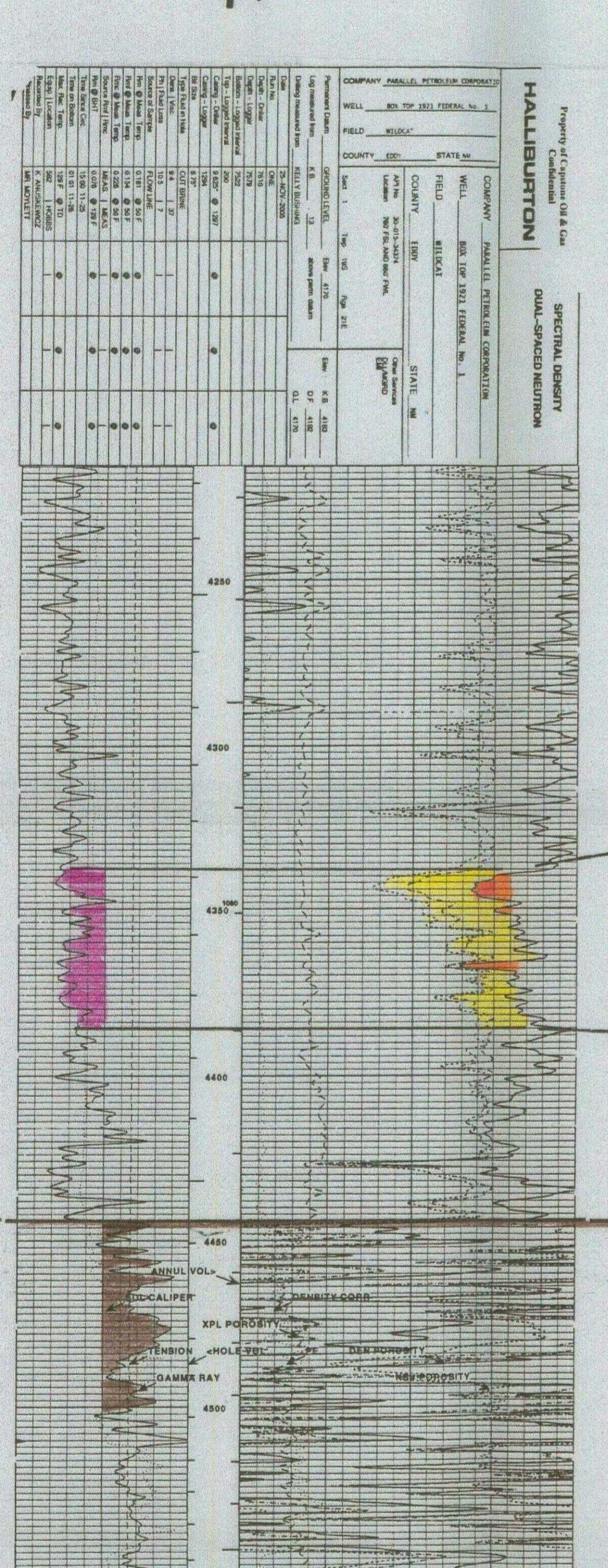


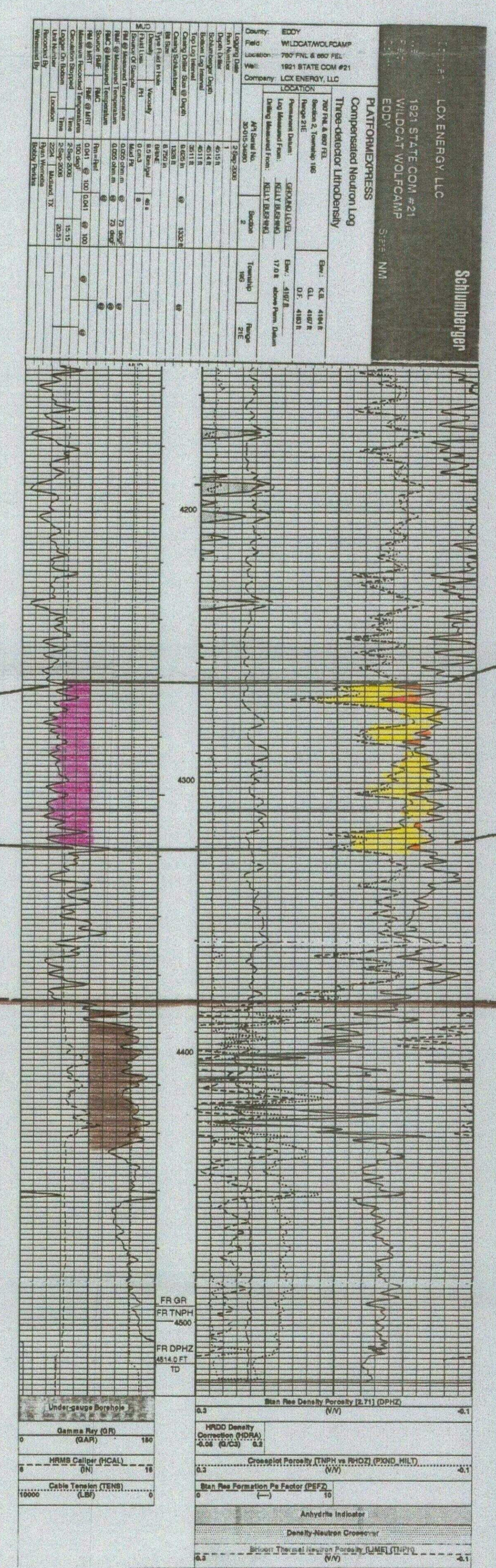
B

B'

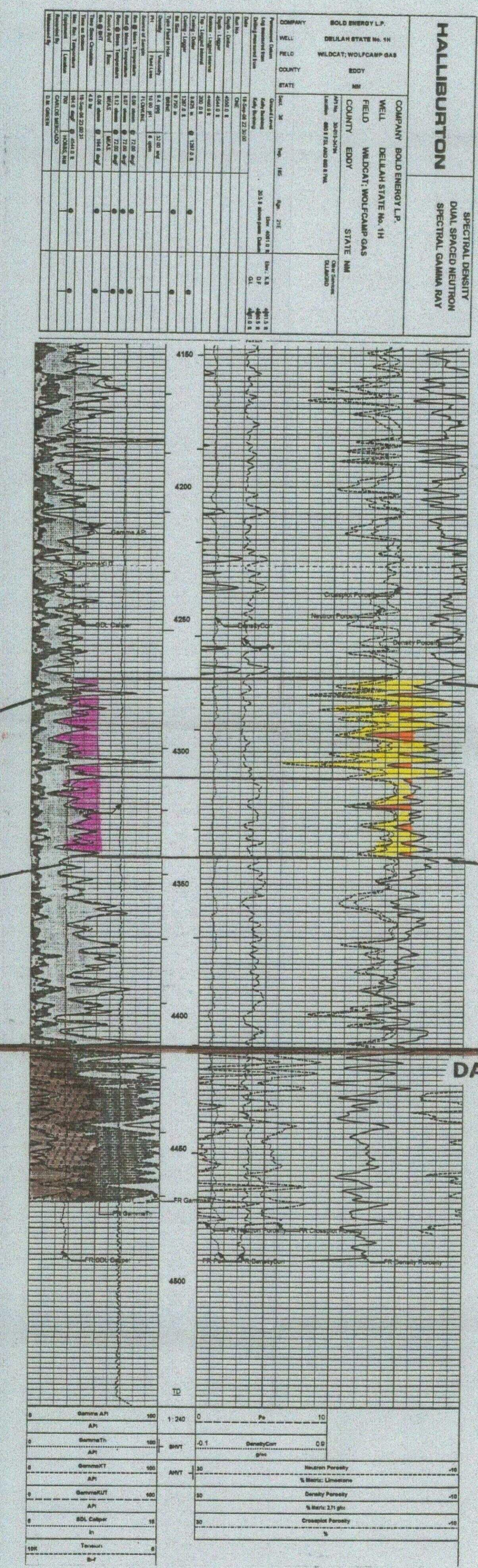


PERF Wolfcamp lateral: 4650' - 6722' with 104 shots
Frac with 10,000 gals 15% HCL + 14,000 gal w +
2 tons CO2 + 240,000 # sand

test date 4/10/06
44/64" chk tp 1025 #
6,765 mcfpgd



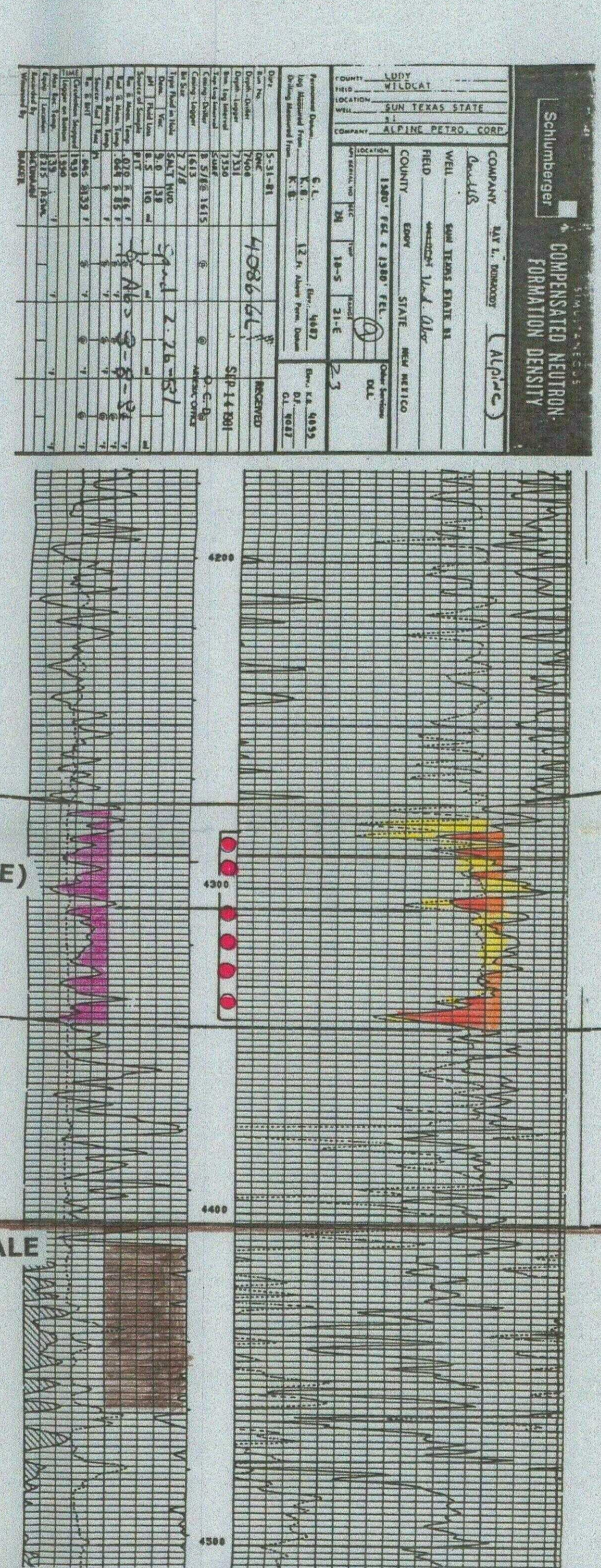
Testing



Testing

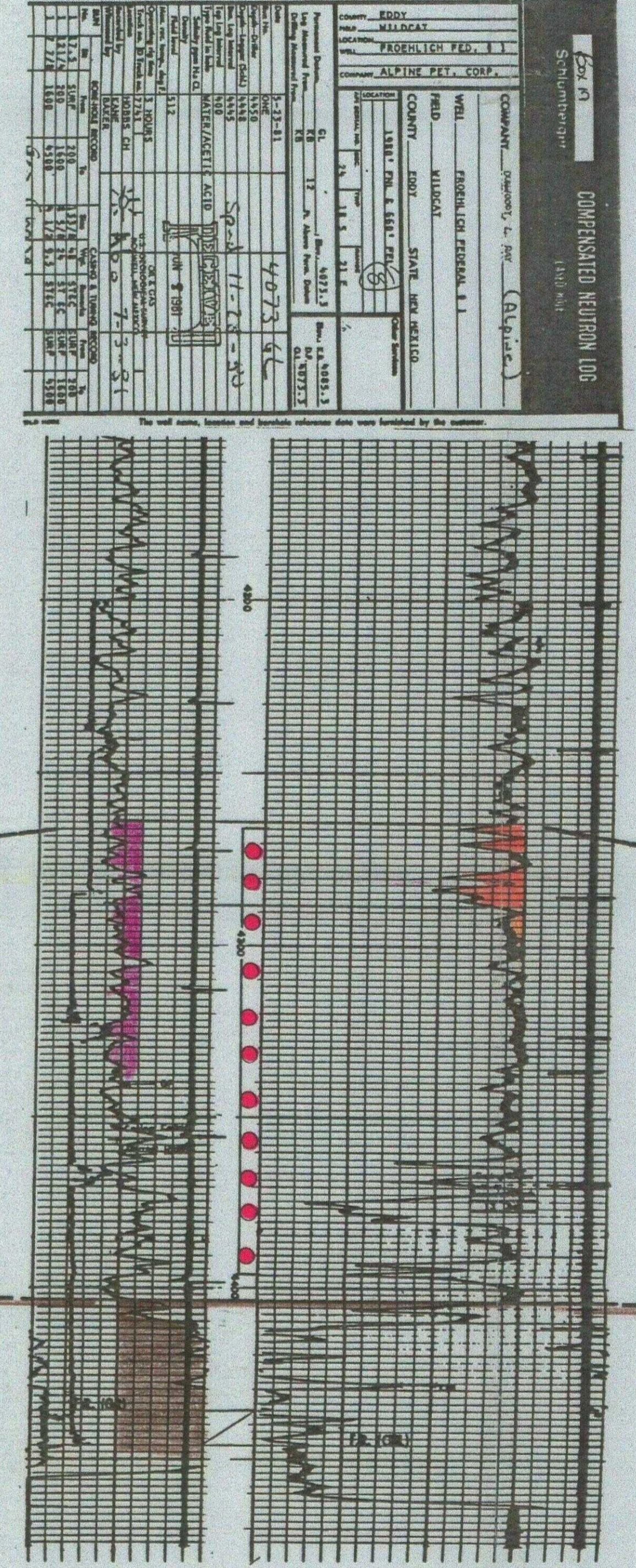
WOLFCAMP PAY
(HORIZONTAL TARGET ZONE)

DATUM = TOP WOLFCAMP SHALE



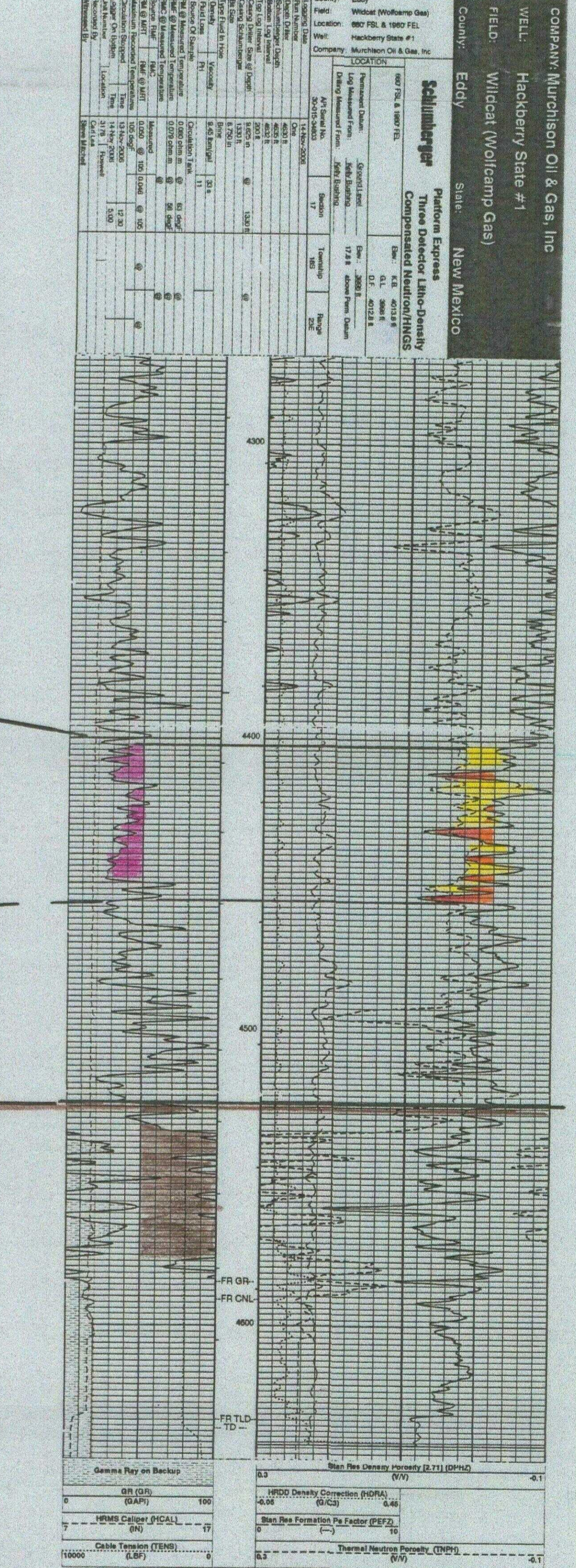
PERF Wolfcamp: 4283' - 4340' with 14 shots
Az with 2,000 gals
Frac with 15,000 gals gel water +
20,000 # sand

IP CAOF 606 mcfpgd



PERF Wolfcamp: 4296' - 4396' with 19 shots
Az with 2,000 gals
Frac with 15,000 gals gel water +
15,000 gals CO2 + 30,000 # sand

IP FLOW 858 mcfpgd



WOCU
Parallel Petroleum Corp.
NMOCD Case No. 13862

ATTACHMENT H
CASE NO. 13862

PARALLEL
PETROLEUM CORPORATION

WALNUT DRAW (WOLFCAMP) UNIT
Eddy County, New Mexico

WOLFCAMP STRATIGRAPHIC
CROSS SECTION B-B'

12/2006 Geology by: JE / MM