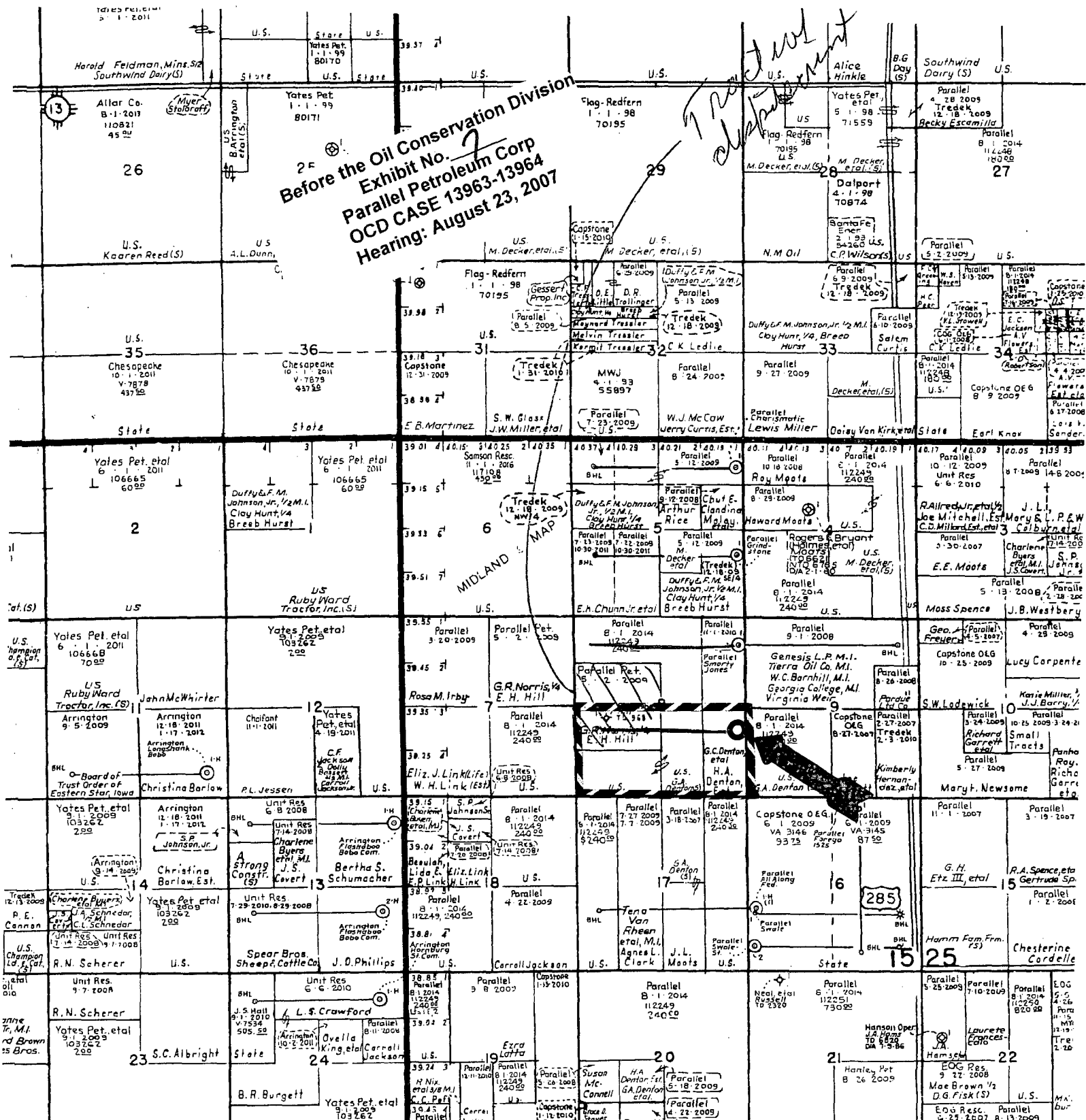


Before the Oil Conservation Division
Exhibit No. 2
Parallel Petroleum Corp
OCD CASE 13963-13964
Hearing: August 23, 2007



LOCATOR MAP
CASE NO. 13964

Funny Cide 1525-8 Federal Com. No. 1
WELL

T-15-S, R-25-E, NMPM

SECTION 8: S/2

CHAVES COUNTY NEW MEXICO