

DISTRICT I  
1625 N. French Dr., Hobbs, NM 88240

DISTRICT II  
101 W. Grand Avenue, Artesia, NM 86210

DISTRICT III  
1000 Rio Brazos Rd., Aztec, NM 87410

DISTRICT IV  
1220 S. St. Francis Dr., Santa Fe, NM 87505

State of New Mexico  
Energy, Minerals & Natural Resources Department

OIL CONSERVATION DIVISION  
1220 South St. Frances Dr.  
Santa Fe, NM 87505

Form C-102  
Revised October 12, 2005  
Submit to Appropriate District Office  
State Lease - 4 Copies  
Fee Lease - 3 Copies

AMENDED REPORT

WELL LOCATION AND ACREAGE DEDICATION PLAT

API Number <b>30-005-63946</b>		Pool Code	Pool Name
Property Code	Property Name GIACOMO 1525-8 FED COM		Well Number 1
GRID No.	Operator Name PARALLEL PETROLEUM CORPORATION		Elevation 3539'

Surface Location

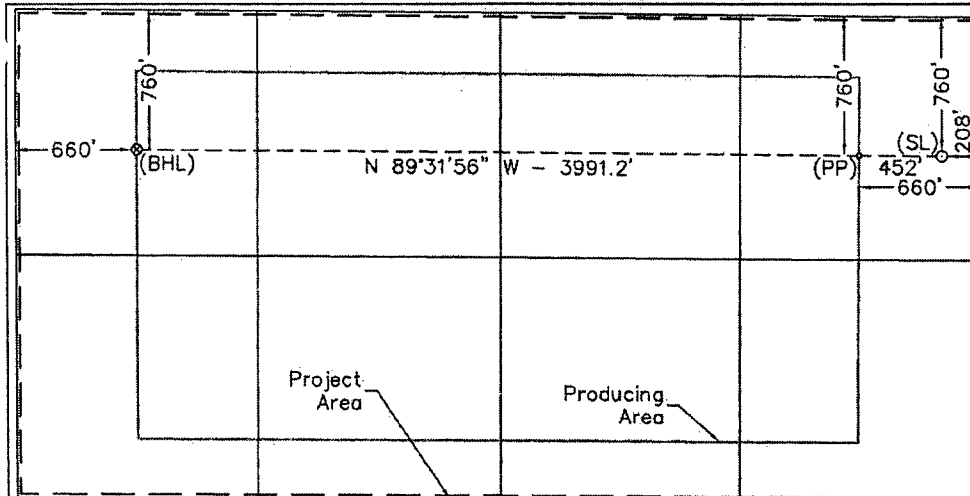
UL or lot No.	Section	Township	Range	Lot Idn	Feet from the	North/South line	Feet from the	East/West line	County
A	8	15 S	25 E		760	NORTH	208	EAST	CHAVES

Bottom Hole Location If Different From Surface

UL or lot No.	Section	Township	Range	Lot Idn	Feet from the	North/South line	Feet from the	East/West line	County
D	8	15 S	25 E		760	NORTH	660	WEST	CHAVES

Dedicated Acres 320	Joint or Infill	Consolidation Code	Order No.
------------------------	-----------------	--------------------	-----------

NO ALLOWABLE WILL BE ASSIGNED TO THIS COMPLETION UNTIL ALL INTERESTS HAVE BEEN CONSOLIDATED OR A NON-STANDARD UNIT HAS BEEN APPROVED BY THE DIVISION



**OPERATOR CERTIFICATION**  
I hereby certify that the information contained herein is true and complete to the best of my knowledge and belief, and that this organization either owns a working interest or unleased mineral interest in the land including the proposed bottom hole location or has a right to drill this well at this location pursuant to a contract with an owner of such a mineral or working interest, or to a voluntary pooling agreement or a compulsory pooling order heretofore entered by the division.

*Deane Danham* 3-19-07  
Signature Date  
Deane Danham  
Printed Name

**SURVEYOR CERTIFICATION**  
I hereby certify that the well location shown on this plat was plotted from field notes of actual surveys made by me or under my supervision and that the same is true and correct to the best of my belief.

January 30, 2007  
Date of Survey LVA  
Signature & Seal of Professional Surveyor

W.O. Num. 2007-0073  
Certificate No. MACON McDONALD 12185

<b>Bottom Hole Location Plane Coordinate</b> X = 457,770.7 Y = 740,292.7 <b>Geodetic Coordinate</b> Lat. 33°02'06.18" N Long. 104°28'16.07" W (NAD '27)	<b>Penetration Point Plane Coordinate</b> X = 461,760.8 Y = 740,260.1 <b>Geodetic Coordinate</b> Lat. 33°02'05.91" N Long. 104°27'29.19" W (NAD '27)	<b>Surface Location Plane Coordinate</b> X = 462,212.6 Y = 740,256.4 <b>Geodetic Coordinate</b> Lat. 33°02'05.88" N Long. 104°27'23.89" W (NAD '27)
---	--	---

NOTE:  
1) Plane Coordinates shown hereon are Transverse Mercator Grid and Conform to the "New Mexico Coordinate System", New Mexico East Zone, North American Datum of 1927. Distances shown hereon are mean horizontal surface values.

Before the Oil Conservation Division  
Exhibit No. 3  
Parallel Petroleum Corp  
OCD CASE 13963-13964  
Hearing: August 23, 2007