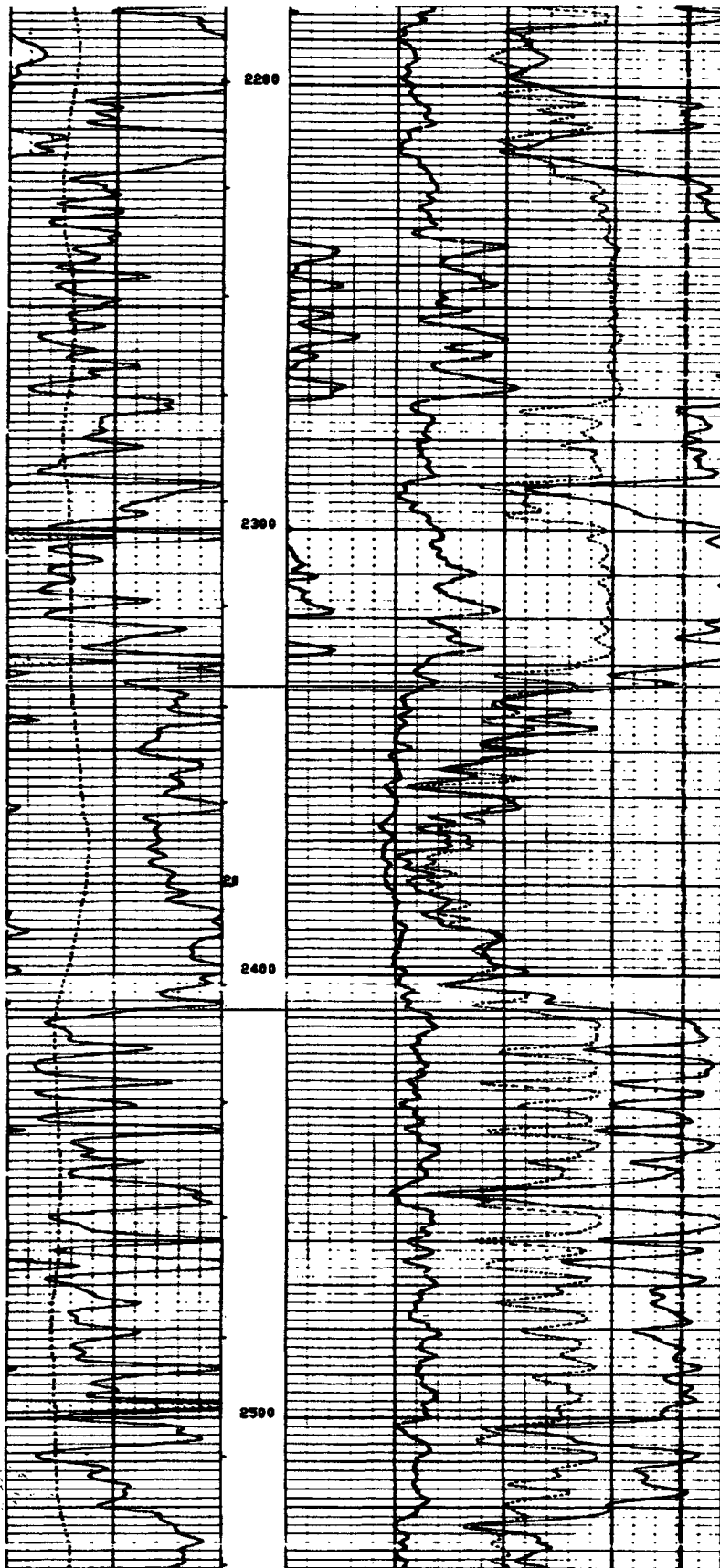


Eastland Oil Company - PJ State "A" #5

T19S R29E, 2310 FSL & 2310 FEL of Section 1



Unitized Formation
Queen Interval (Shattuck Member)

Compensated Neutron/Litho-Density open hole log (Schlumberger)

Oil Conservation Division
Case No. 11
Exhibit No. 11



PROPOSED EASTLAND QUEEN UNIT

Type Log for Unitized Formation
Proposed Eastland Queen Unit

GEOLOGY : CSB
GEOPHYSICS :

C.I. :
SCALE :