

DISTRICT I
1825 N. French Dr., Hobbs, N.M. 88240

DISTRICT II
1301 W. Grand Avenue, Artesia, N.M. 88210

DISTRICT III
1000 Rio Brazos Rd., Aztec, N.M. 87410

DISTRICT IV
1220 S. St. Francis Dr., Santa Fe, N.M. 87505

State of New Mexico
Energy, Minerals & Natural Resources Department

OIL CONSERVATION DIVISION
1220 South St. Francis Dr.
Santa Fe, N.M. 87505

Form C-102
Revised October 12, 2005
Submit to Appropriate District Office
State Lease - 4 Copies
Fee Lease - 3 Copies

☐ AMENDED REPORT

WELL LOCATION AND ACREAGE DEDICATION PLAT

¹ API Number	² Pool Code	³ Pool Name
⁴ Property Code	⁵ Property Name ALMAGRE ARROYO 30	⁶ Well Number 2
⁷ GRID No.	⁸ Operator Name U.S. ENERCORP, LTD.	⁹ Elevation 7206

¹⁰ Surface Location

UL or lot no.	Section	Township	Range	Lot Idn	Feet from the	North/South line	Feet from the	East/West line	County
J	30	24 N	1 E		2313	SOUTH	2602	EAST	RIO ARriba

¹¹ Bottom Hole Location If Different From Surface

UL or lot no.	Section	Township	Range	Lot Idn	Feet from the	North/South line	Feet from the	East/West line	County
D	30	24 N	1 E		1000'	NORTH	1000'	WEST	RIO ARriba

¹² Dedicated Acres	¹³ Joint or Infill	¹⁴ Consolidation Code	¹⁵ Order No.
-------------------------------	-------------------------------	----------------------------------	-------------------------

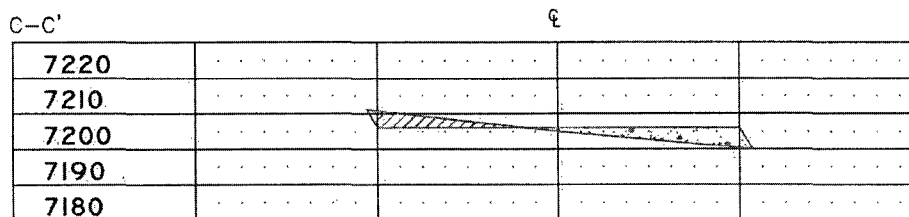
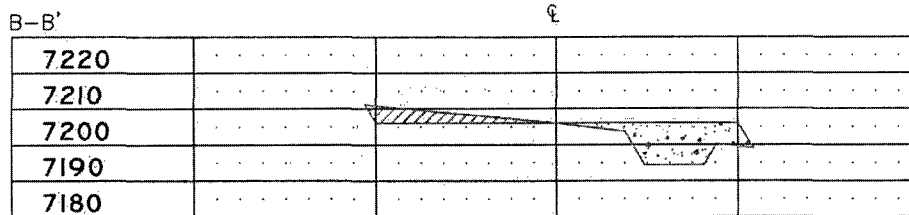
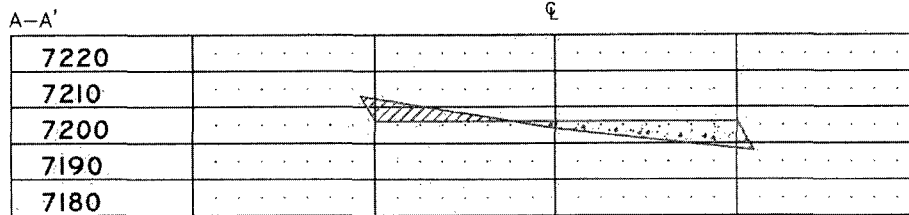
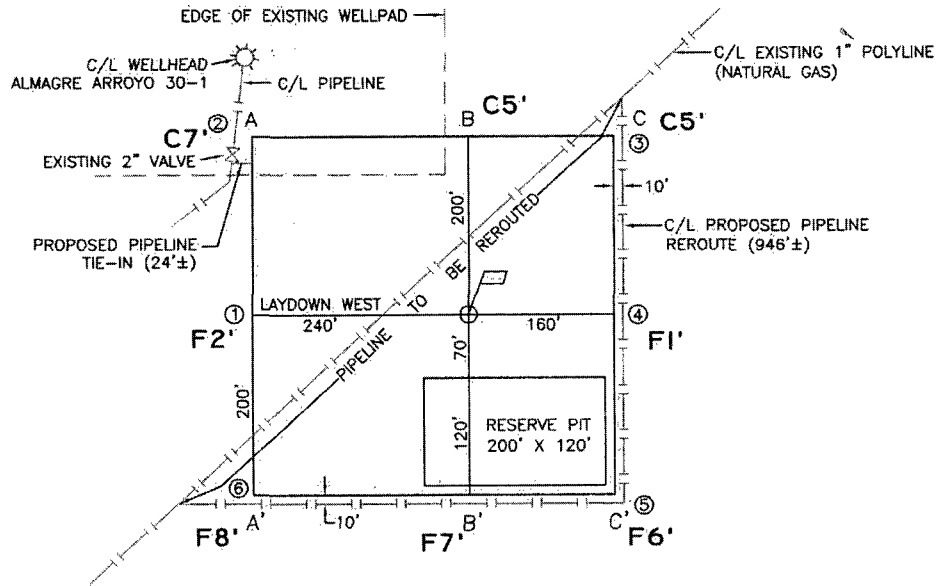
NO ALLOWABLE WILL BE ASSIGNED TO THIS COMPLETION UNTIL ALL INTERESTS HAVE BEEN CONSOLIDATED
OR A NON-STANDARD UNIT HAS BEEN APPROVED BY THE DIVISION

<div>16 N 89°20'39" E 2636.18' 1000' N 0°31'13" W 2638.26' N 0°31'13" W S 89°23'39" W</div>	<div>NAD 83 LAT: 36.286416° N LONG: 106.881712° W</div> <div>BEFORE EXAMINER OIL CONSERVATION DIVISION EXHIBIT NO. SECTION 30 CASE NO.</div>	<div>5242.10' 5279.40' 2602' 2313' 5246.70'</div>	<div>¹⁷ OPERATOR CERTIFICATION I hereby certify that the information contained herein is true and complete to the best of my knowledge and belief, and that this organization either owns a working interest or unleased mineral interest in the land including the proposed bottom hole location or has a right to drill this well at this location pursuant to a contract with an owner of such a mineral or working interest, or to a voluntary pooling agreement or a compulsory pooling order heretofore entered by the division. Signature _____ Date _____ Printed Name _____</div> <div>¹⁸ SURVEYOR CERTIFICATION I hereby certify that the well location shown on this plat was plotted from field notes of actual surveys made by me or under my supervision, and that the same is true and correct to the best of my belief. 10/02/07 Date of Survey Signature and Seal of Professional Surveyor: Certificate Number: 63846</div>
---	--	---	---

BEFORE DIGGING
CALL FOR UTILITY
LINE LOCATION!



0 100 200
SCALE: 1"=200'



CROSS SECTIONS
HORIZONTAL: 1"=200'
VERTICAL: 1"=50'

LEASE: **ALMAGRA ARROYO 30-2**

FOOTAGE: **2313' FSL, 2602' FEL**

SEC. **30** TWN. **24 N** RNG. **1 E** N.M.P.M.

LAT: **N 36.281025°** LONG: **W 106.876141° (NAD 83)**

ELEVATION: **7206**

U.S. ENERCORP, LTD.
SAN ANTONIO, TEXAS

SURVEYED: 10/02/07

REV. DATE:

APP. BY R.L.P.

DRAWN BY: H.S.

DATE DRAWN: 10/04/07

FILE NAME: 7938C01



P.O. BOX 3651
FARMINGTON, NM 87499
OFFICE: (505) 334-0408



U.S. ENERCORP, LTD.
SAN ANTONIO, TEXAS

APP. BY: R.L.P

FILE NAME: 7938T01



P.O. BOX 3651
FARMINGTON, NM 87499
OFFICE: (505)334-0408

AS-STAKED LOCATION 10-02-07

ALMAGRE ARROYO # 30-2

NAVD88 ELEVATION = 7206 FT.

OFFSETS: SURFACE LOCATION = 2313' FSL & 2602' FEL

NAD-27

NAD-83

LATITUDE: 36°16.8605' N

36.281025° N

LONGITUDE: 106°52.5327 W

106.876141° W

NM COORD. SYS., Central Zone, NAD27: X=315,627.95 ft. Y=1,922,092.98 ft.

OFFSETS: BOTTOM HOLE LOCATION = 1000' FNL & 1000' FWL

NAD-27

NAD-83

LATITUDE: 36°17.1839' N

36.286416° N

LONGITUDE: 106°52.8670' W

106.881712° W

NM COORD. SYS., Central Zone, NAD27: X=313,998.72 ft. Y=1,924,065.80 ft.

TRUE COURSES & DISTANCES FROM SURFACE LOCATION

To Existing Almagre Arroyo #30-1 Well Head: Az = 320° (N 40° W) ~ 382.3 ft.

To Proposed Bottom Hole Location (Above): Az = 320°05' (N 39°55' W) ~ 2559.6 ft.

REVISED 10-10-07 - RLP