

552

ConocoPhillips Company  
PO Box 4289  
Farmington NM 87499-4289  
505-326-9700

*Burlington Resources Oil & Gas Co LP*  
"An affiliate of ConocoPhillips Company"

Bureau of Land Management  
Farmington Resource Area  
1235 La Plata Highway  
Farmington, NM 87401

Oil Conservation Division  
State of New Mexico  
1220 S. Saint Francis Drive  
Santa Fe, NM 87505

**Re: 2008 Plan of Development  
SAN JUAN 29-4 UNIT 14-08-001-1055  
RIO ARRIBA COUNTY, NEW MEXICO**

Ladies and Gentlemen:

The following Participating Areas currently exist in the SAN JUAN 29-4 UNIT:

FORMATION	EXPANSION	EFFECTIVE DATE
MESAVERDE	004	01-Aug-78
PICTURED CLIFFS	007	01-Oct-94

The 2007 Plan of Development (or amendments thereto) provided for no wells to be drilled during 2007.

Pursuant to Section 10 of the SAN JUAN 29-4 UNIT Agreement, Burlington Resources Oil & Gas Company LP, as Unit Operator, hereby submits the 2008 Plan of Development as follows:

There are not any new drills or recompletions planned at this time during 2008.

The working interest owners are being furnished a copy of this letter and enclosed map. Burlington, as Unit Operator, will drill any offset wells required to prevent drainage of unitized substances and any other wells deemed necessary by the working interest owners or Unit Operator.

In accordance to Section 10 of the Unit Agreement, please provide your approvals by executing and returning a copy of the attached approval page to the undersigned.

Please contact me at (505) 326-9760 if there are any questions regarding this letter.

Sincerely,

Linda Dean

San Juan 29-4 Unit 3.0 (2008)

**SAN JUAN 29-4 UNIT  
2008 PLAN OF DEVELOPMENT APPROVALS**

\_\_\_\_\_  
**Bureau of Land Management**

\_\_\_\_\_  
**Date**

\_\_\_\_\_  
**New Mexico Oil Conservation Division**

\_\_\_\_\_  
**Date**

# ***WORKING INTEREST OWNERS SAN JUAN 29-4 UNIT***

BURLINGTON RESOURCES O&G CO LP

DUGAN PRODUCTION CORP

JABCO LLP

KATHLEEN QUINN

LANGDON D HARRISON REVOC TRUST B

MAR OIL & GAS CORPORATION

NAVATEX ENERGY LP

PROVIDENCE MINERALS LLC

RIO ARIBAGAS LTD

RUTH ZIMMERMAN TRUST

THOMAS P TINNIN

TINMIL A NM LLC

XTO ENERGY INC

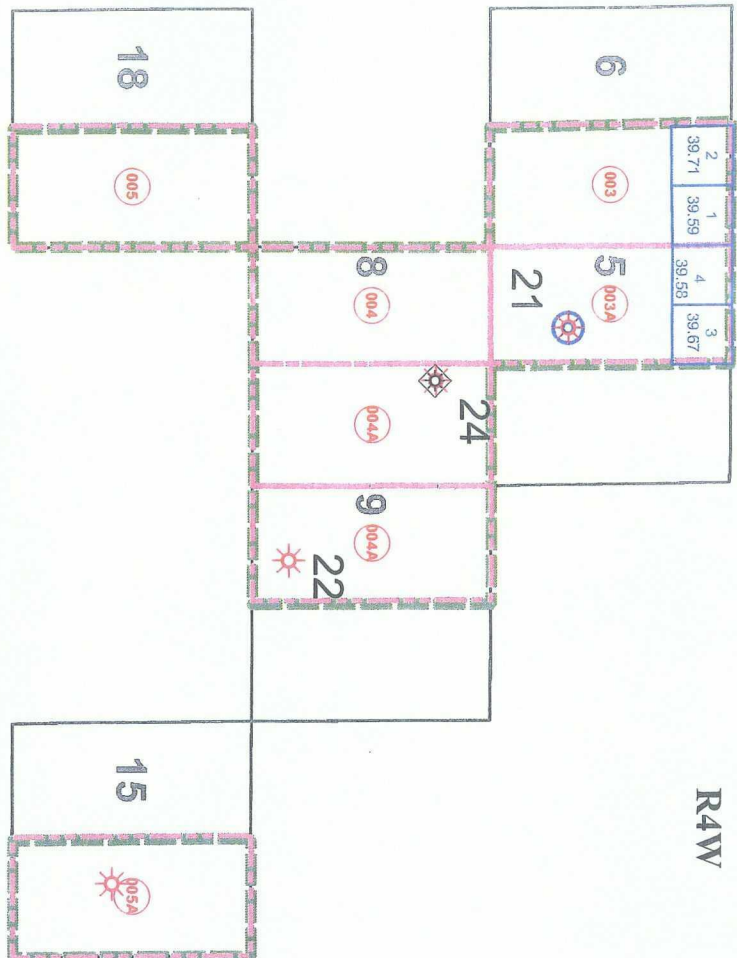
San Juan 29-4 Unit Wells Status as of 2-8-08

Well Name	Resv Name	Sec	Twn	wn	D	Rng	ng	D	ST	Prod Stat	Apl Well Code	MMS Prod				Oper ID	Compl Dt	Int Prod Dt	1st Sale Dt
												Interval	Number	MMS Lease Agr	Use ID				
SAN JUAN 29-4 UNIT 18	BLANCO::MESAVERDE	33	29	N	N	4	W	NM		11	300390749900S01	S01	8910010550		A728829	216600	12/8/1959	6/5/1960	6/5/1960
SAN JUAN 29-4 UNIT 201	BASIN CB::FRUITLAND COAL	31	29	N	N	4	W	NM		11	300392537200C02	C02	NMSE079893A		A723602	216600	9/21/1994	6/15/1995	6/15/1995
SAN JUAN 29-4 UNIT 201	GOBERNADOR::PICTURED CLIF	31	29	N	N	4	W	NM		11	300392537200C01	C01	891001055A		A728830	216600	9/21/1994	6/15/1995	6/15/1995
SAN JUAN 29-4 UNIT 21	BLANCO::MESAVERDE	5	29	N	N	4	W	NM		11	300392145300D01	D01	8910010550		A728829	216600	7/5/1978	11/28/1979	11/28/1979
SAN JUAN 29-4 UNIT 21	BLANCO EAST::PICTURED CLI	5	29	N	N	4	W	NM		41	300392145300D02	D02	891001055A		A728830	216600	7/5/1978	5/1/1980	5/1/1980
SAN JUAN 29-4 UNIT 22	BLANCO::PICTURED CLIFFS	9	29	N	N	4	W	NM		41	300392184400S01	S01	891001055A		A728830	216600	12/10/1978	8/1/1982	8/1/1982
SAN JUAN 29-4 UNIT 24	UNK::GALLUP	8	29	N	N	4	W	NM		41	300392284400D01	D01	NMSE079757A		A722969	216600	11/12/1982	5/1/1984	5/1/1984
SAN JUAN 29-4 UNIT 24	BLANCO EAST::PICTURED CLI	8	29	N	N	4	W	NM		11	300392284400D02	D02	891001055A		A728830	216600	11/12/1982	5/24/1984	5/24/1984
SAN JUAN 29-4 UNIT 25	GOBERNADOR::PICTURED CLIF	30	29	N	N	4	W	NM		11	300392775300S01	S01	891001055A		A728830	216600	10/26/2005	11/3/2005	11/3/2005
SAN JUAN 29-4 UNIT NP 200	BASIN CB::FRUITLAND COAL	30	29	N	N	4	W	NM		11	300392528800C02	C02	NMSE079893A		A723601	216600	10/20/1993	1/27/1994	1/27/1994
SAN JUAN 29-4 UNIT NP 200	GOBERNADOR::PICTURED CLIF	30	29	N	N	4	W	NM		11	300392528800C01	C01	NMSE079893A		A720974	216600	10/20/1993	1/27/1994	1/27/1994

Prod Stat: 11 Flowing Well  
21 Pumping Well  
41 Shut-in

61 Temp Abandoned  
71 Perm Abandoned Well  
82 Drilling (Developmental)

R4W



# San Juan 29-4 Unit

## Well Formation

- FRUITLAND COAL
- PICTURED CLIFFS
- MESAVERDE
- GALLUP

T 29 N

