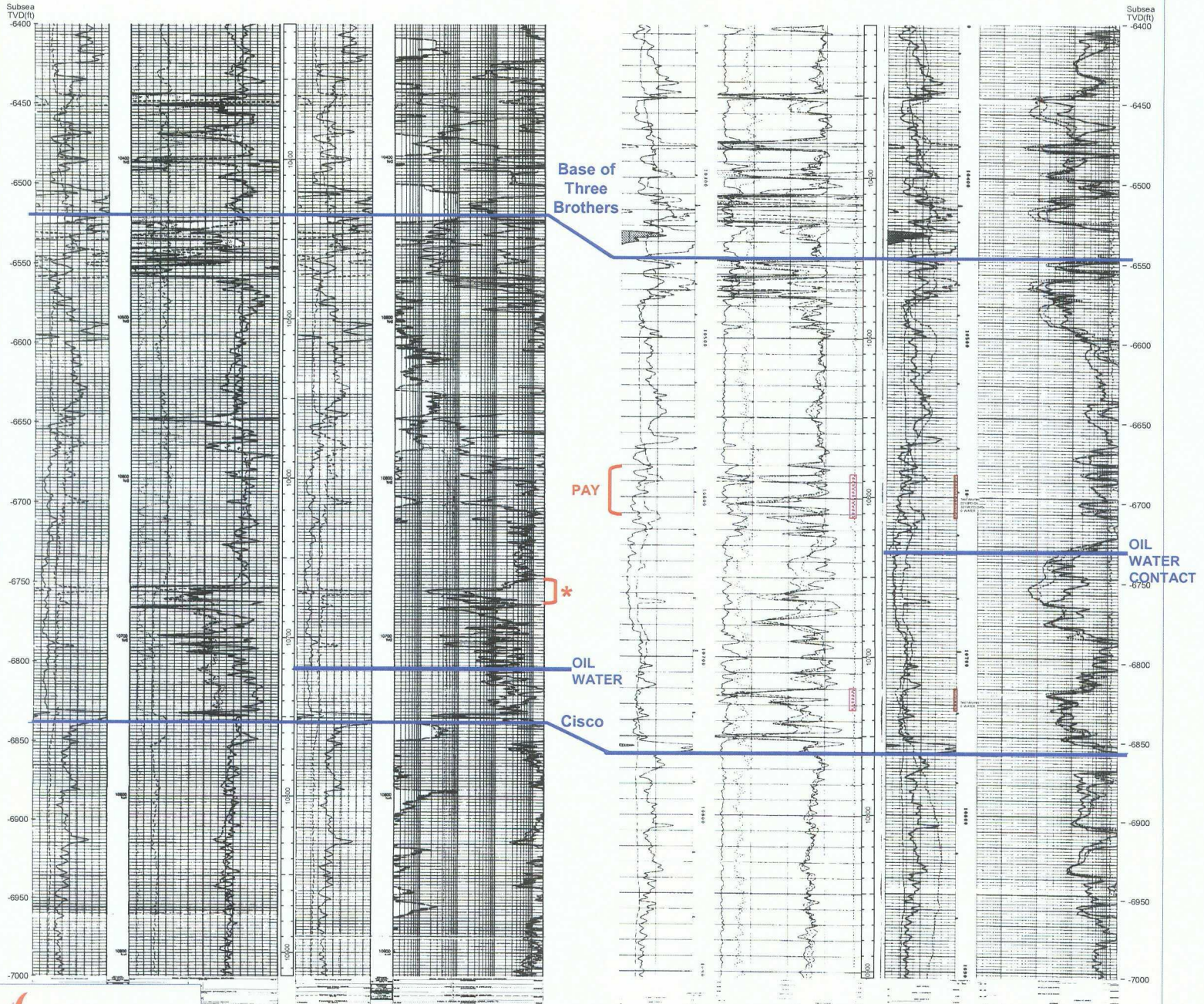


A

EOG RESOURCES INC  
PURPLE HUMPY 15  
30025360890000  
3,915 ● 1  
T16S R36E S15  
12,000  
DIAMOND  
404STRN

CONCHO OIL & GAS CORPORATION  
DOUBLE EABLE 'SV'  
30025336360000  
3,904 ● 1  
T16S R36E S11  
12,000  
LOVINGTON NE  
WFMPALL

A'



\* Proposed Completion

PRODUCTION O\_WFMPALL : 100,278  
PRODUCTION G\_WFMPALL : 168,937  
PRODUCTION W\_WFMPALL : 361,802

BEFORE THE OIL CONSERVATION DIVISION  
Santa Fe, New Mexico  
Case No. 14093..... Exhibit No. 6  
Submitted by:  
**EOG RESOURCES INC.**  
Hearing Date: February 21, 2008

EDDY AND LEA CO. NM STRUCT CROSS SECTION Lovington Wellcamp Purple Humpy Operator Well Name UWI WELL - ELEV. KB ● Well Number Twin-Ridge-Sec WELL - TD Field Name ProdFM
TEXT BELOW TRACKS PRODUCTION - O_WFMPALL PRODUCTION - G_WFMPALL PRODUCTION - W_WFMPALL
By JRPW February 19, 2008 11:36 AM