

ADDENDUM

B

DRAWING OF TRACTS IN THE NORTHWEST QUARTER OF  
SECTION 15, T-16-S, R-36-E, N.M.P.M.  
LEA COUNTY, NEW MEXICO

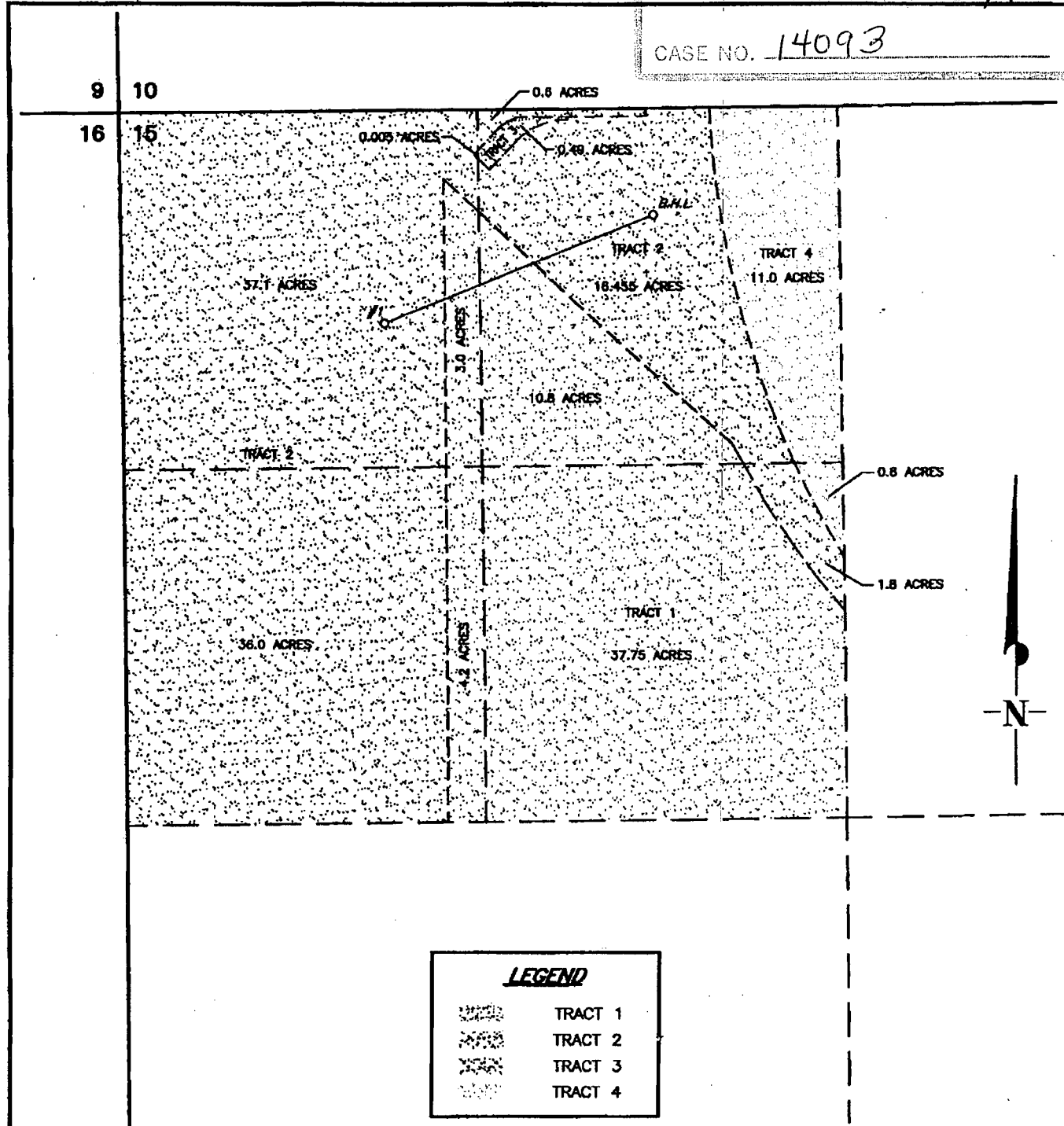
BEFORE EXAMINER

OIL CONSERVATION DIVISION

EXHIBIT NO.

5A

CASE NO. 14093



NO.	REVISION	DATE	BY
SURVEYED BY:			
DRAWN BY: J.C.P.			
APPROVED BY: W.J.K.			

**EOG RESOURCES, INC.**

SURVEYING AND MAPPING BY  
**TOPOGRAPHIC LAND SURVEYORS**  
MIDLAND, TEXAS

SCALE: 1" = 500'

DATE: FEBRUARY 28, 2003

JOB NO.: 86435

SHEET : 1 OF 1