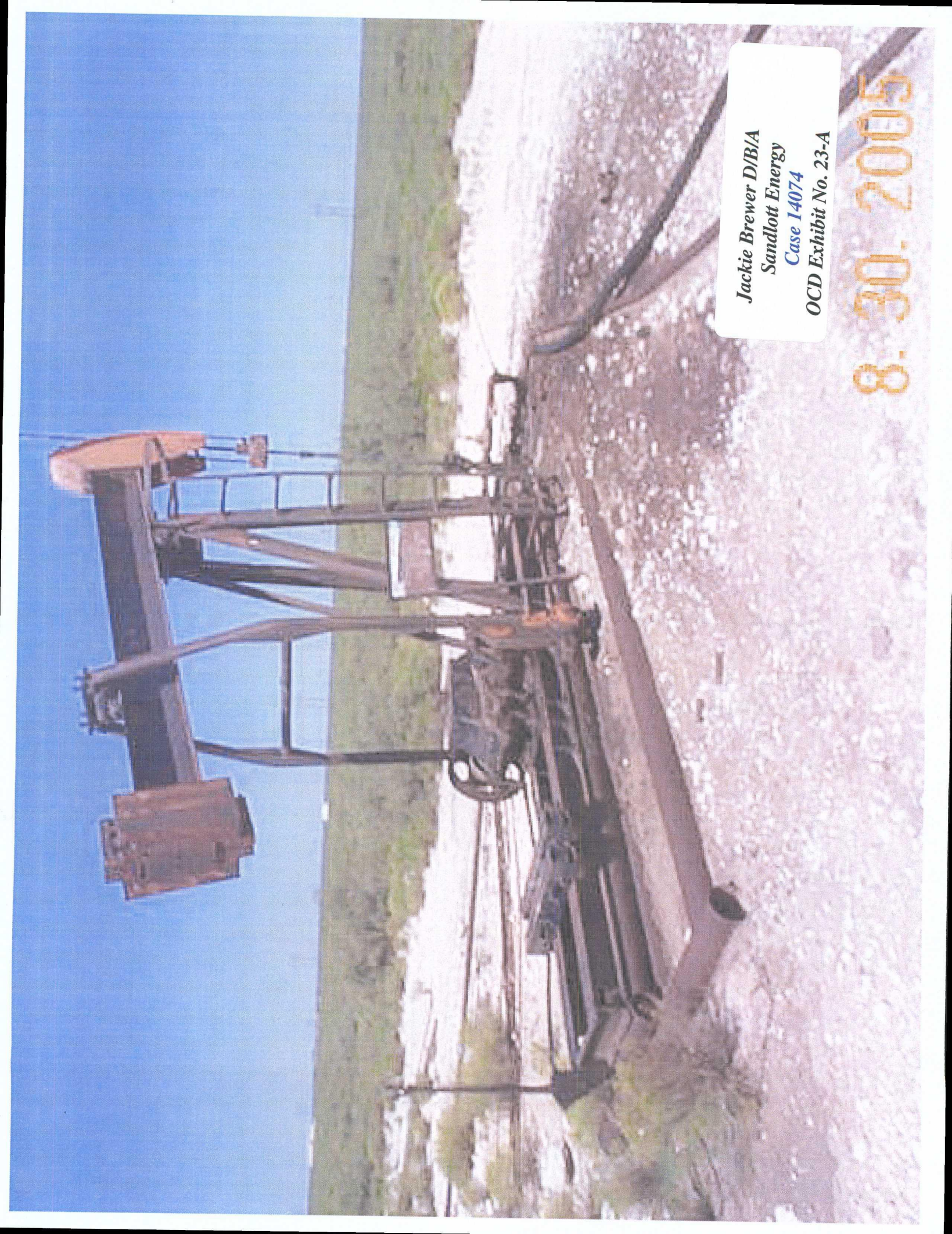


**SANDLOTT ENERGY**  
BUS. & RES. YATES ST. #370  
SE4-NE4  
SEC. 32-T18S-R28E  
EDDY CO. NM

Jackie Brewer D/B/A  
Sandlott Energy  
Case 14074  
OCD Exhibit No. 23

8.30.2005



A photograph of an oil pumpjack in a desert landscape. The pumpjack is a large, dark metal structure with a long, horizontal beam and a vertical rod. It is situated on a gravelly, light-colored ground. In the background, there are green hills and a clear blue sky. A white rectangular label is overlaid on the right side of the image, containing text. A date stamp is visible in the bottom right corner.

Jackie Brewer D/B/A  
Sandlott Energy  
Case 14074  
OCD Exhibit No. 23-A

8.30.2005





Jackie Brewer D/B/A  
Sandlott Energy  
Case 14074  
OCD Exhibit No. 23-B

4.7.2006



S  
BUS

SANDLOTT ENERGY INC

ARCHER PEIKULEUM, INC.  
WESLER YATES ST. #370

SE4-NE4

SEC. 32-T18S-R28E  
EDDY CO. NM

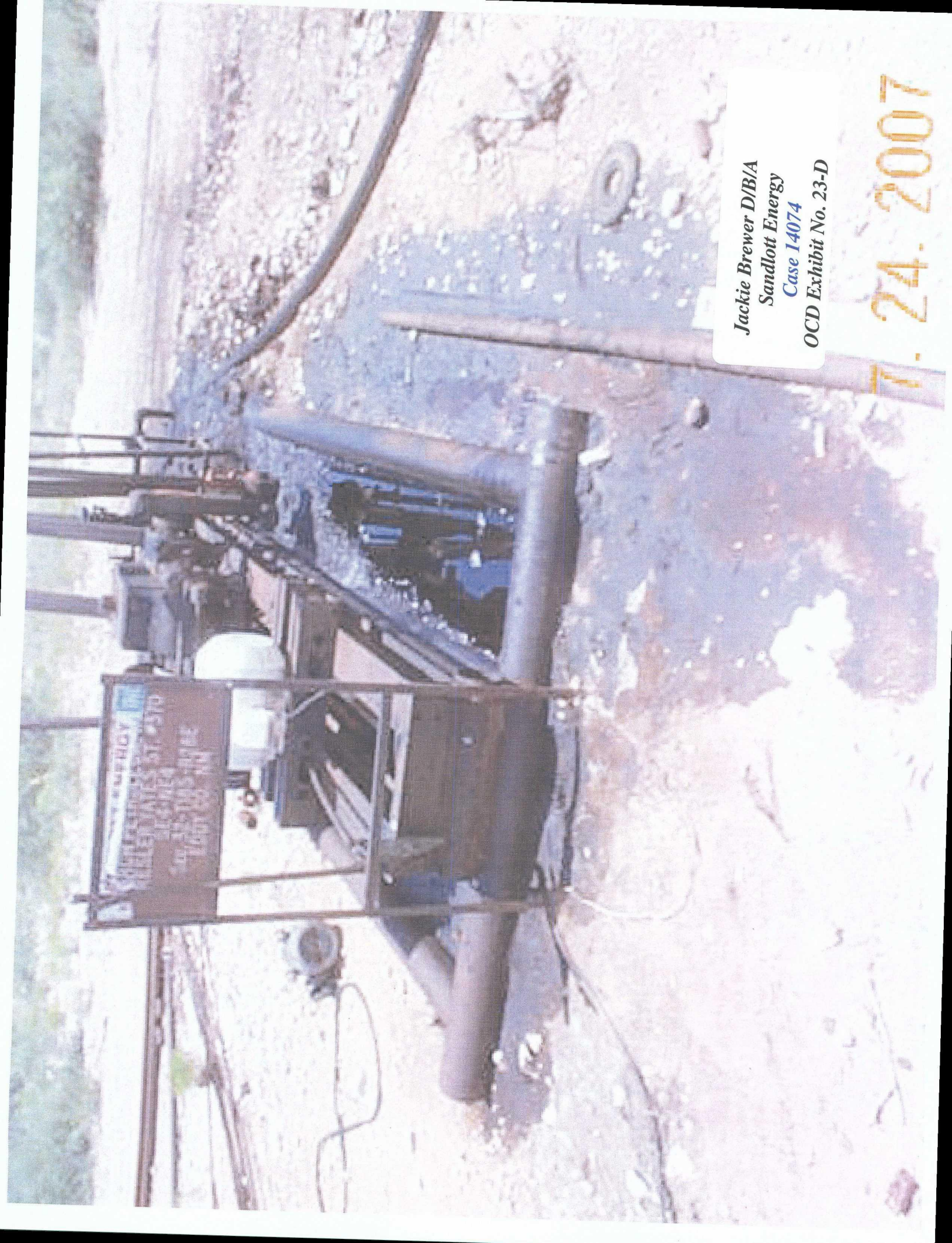
Jackie Brewer D/B/A  
Sandlott Energy  
Case 14074  
OCD Exhibit No. 23-C

7. 24. 2007

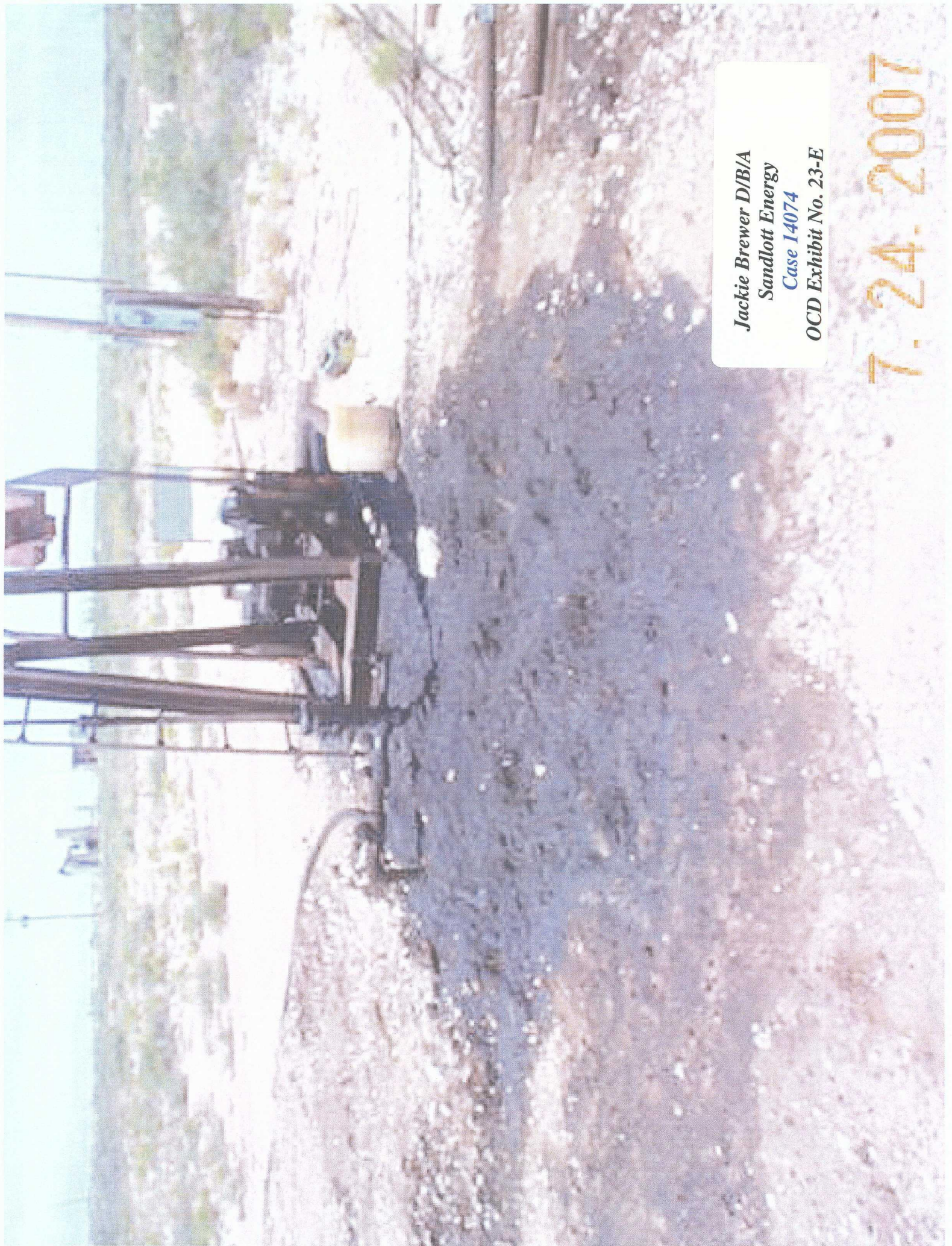


Jackie Brewer D/B/A  
Sandlott Energy  
Case 14074  
OCD Exhibit No. 23-D

7.24.2007








Jackie Brewer D/B/A  
Sandlott Energy  
Case 14074  
OCD Exhibit No. 23-E

7.24.2007





Jackie Brewer D/B/A  
Sandlott Energy  
Case 14074  
OCD Exhibit No. 23-F

7.24.2007



Jackie Brewer D/B/A  
Sandlott Energy  
Case 14074  
OCD Exhibit No. 23-G

7.24.2007