

SANDLOTT ENERGY INC.
BUS. 505-396-6769 MN 505-396-6769

THOMAS ST. #1
NE/NE

SEC. 9-T18S-R28E
EDDY CO. NM-E-8180
00012269

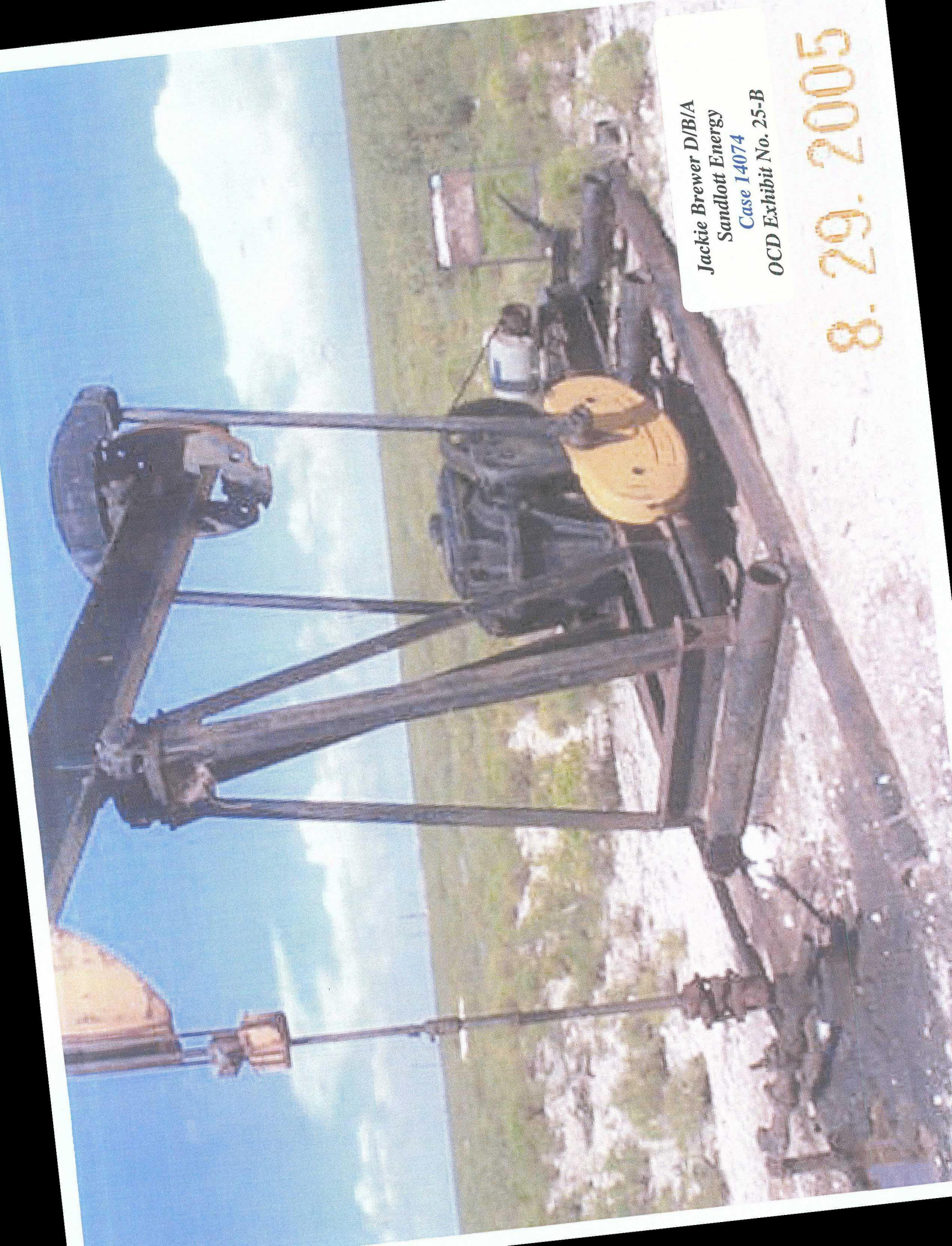
Jackie Brewer D/B/A
Sandlott Energy
Case 14074
OCD Exhibit No. 25

8 29 2005



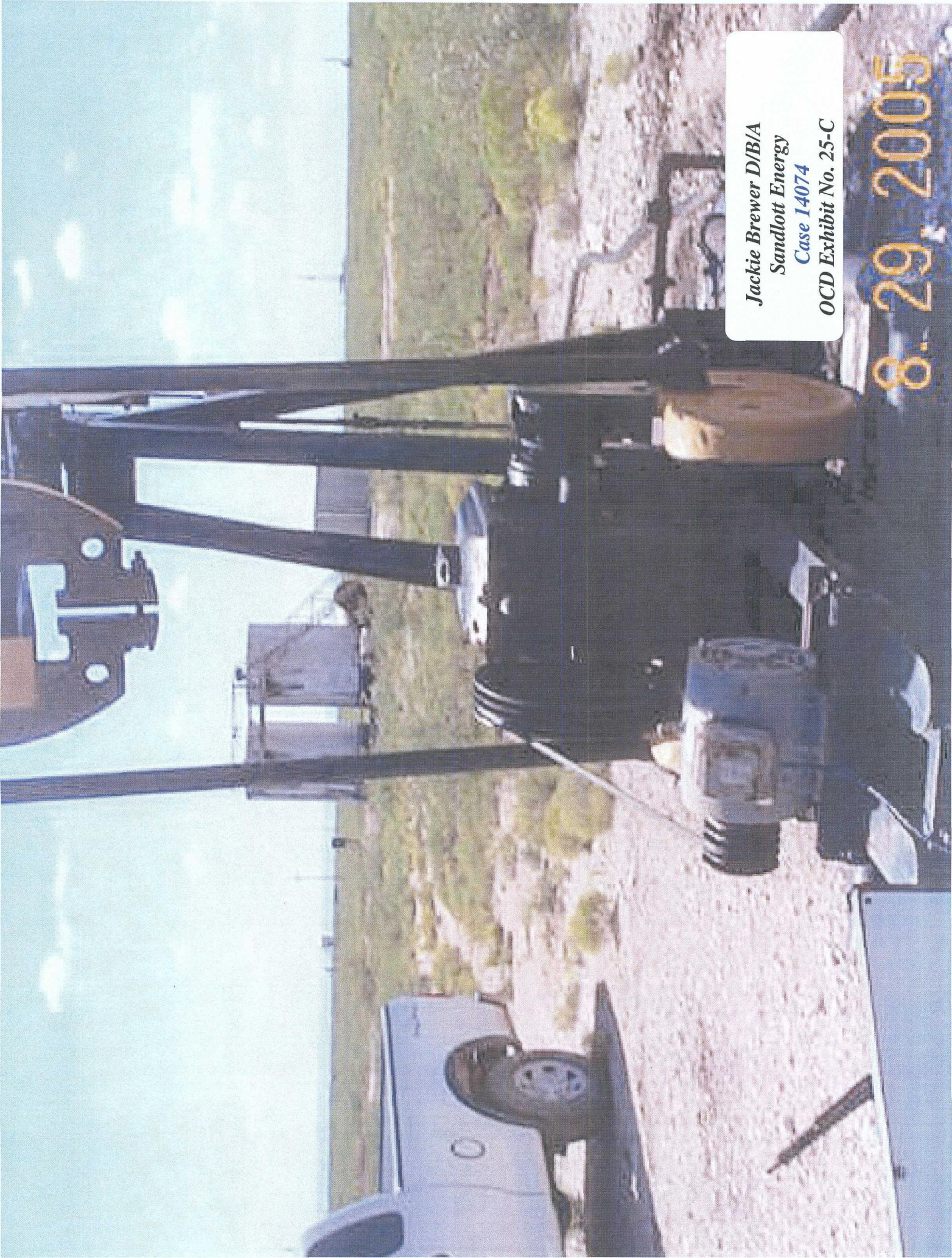
Jackie Brewer D/B/A
Sandlott Energy
Case 14074
OCD Exhibit No. 25-A

8.29.2005



Jackie Brewer D/B/A
Sandlott Energy
Case 14074
OCD Exhibit No. 25-B

8.29.2005



Jackie Brewer D/B/A
Sandlott Energy
Case 14074
OCD Exhibit No. 25-C

8.29.2005


Jackie Brewer D/B/A
Sandlott Energy
Case 14074
OCD Exhibit No. 25-D





Jackie Brewer D/B/A
Sandlott Energy
Case 14074
OCD Exhibit No. 25-E

8.29.2005



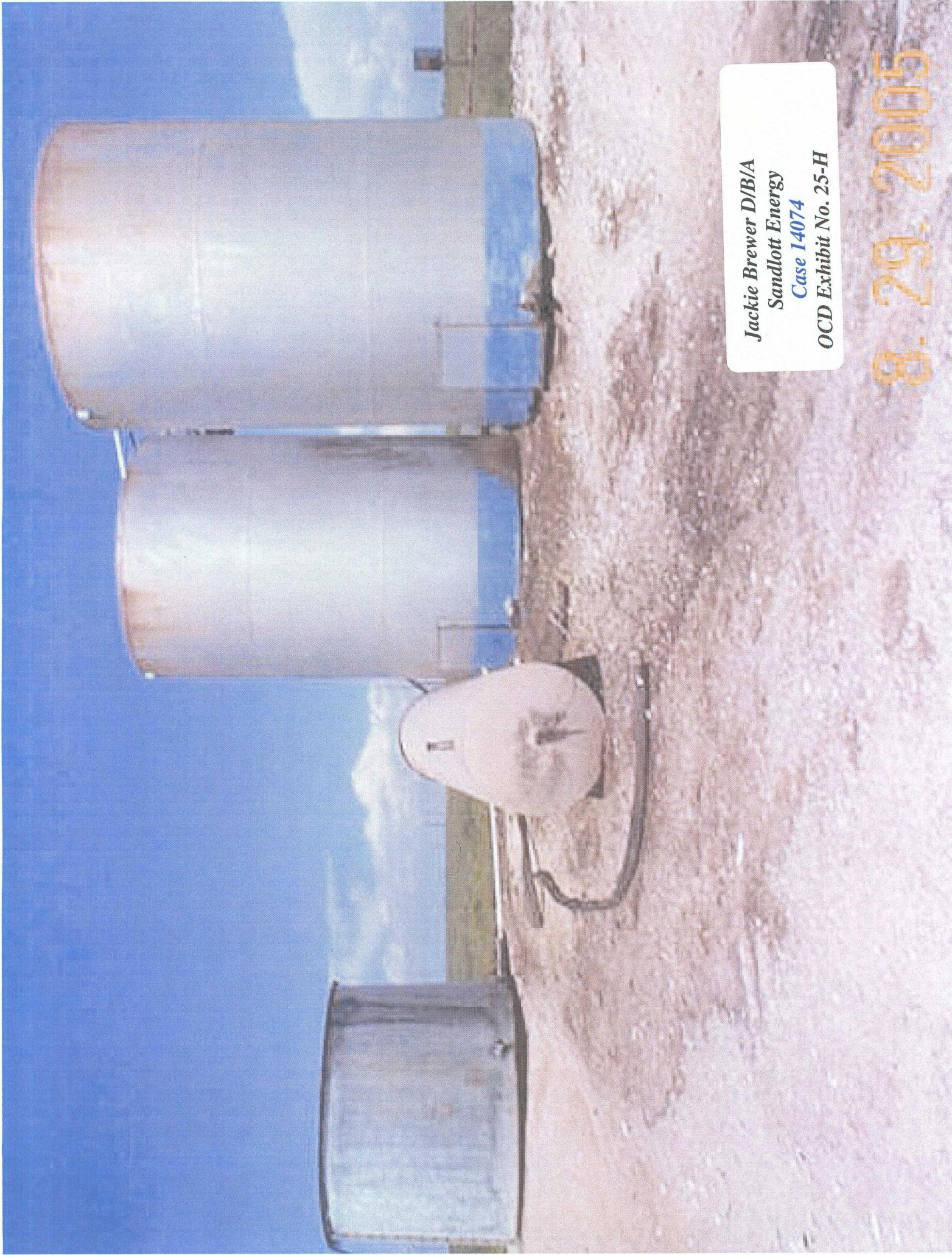
Jackie Brewer D/B/A
Sandlott Energy
Case 14074
OCD Exhibit No. 25-F

8.29.2005



Jackie Brewer D/B/A
Sandlott Energy
Case 14074
OCD Exhibit No. 25-G

8. 29. 2005




Jackie Brewer D/B/A
Sandlott Energy
Case 14074
OCD Exhibit No. 25-H

8.29.2005



Jackie Brewer D/B/A
Sandlott Energy
Case 14074
OCD Exhibit No. 25-I

8.29.2005



Jackie Brewer D/B/A
Sandlott Energy
Case 14074
OCD Exhibit No. 25-J

8.29.2005

ECO Notification

Date: Thursday, October 20, 2005
To: Environmental Compliance Officer, NMOCD District II
Subject: Thomas State Tank Battery - Sandlott Energy

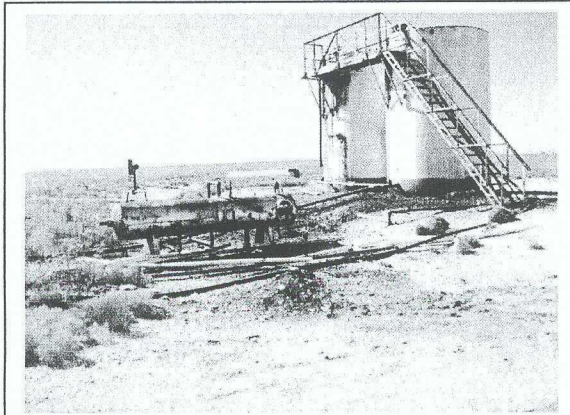


Photo of Tank Battery location,
looking south.

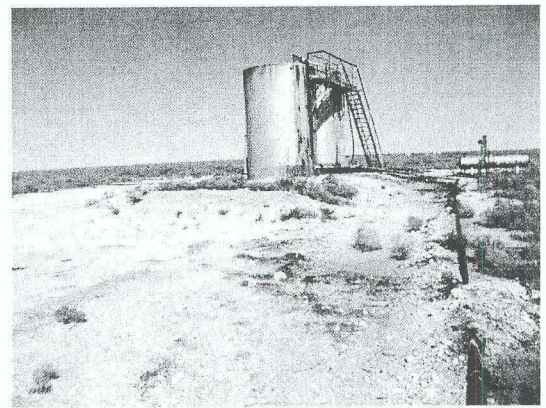


Photo of tank battery location,
looking north.



Photo of sample one location,
southeast of tanks.

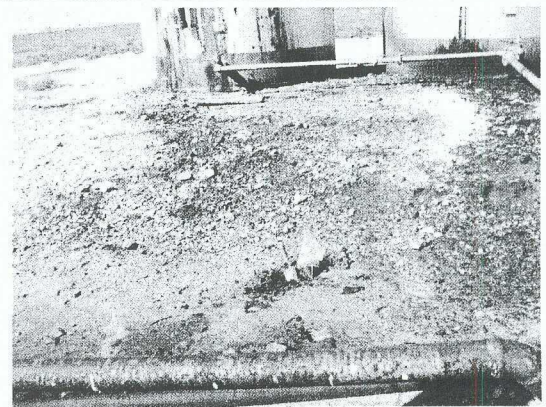


Photo of sample two location,
southwest of tanks.

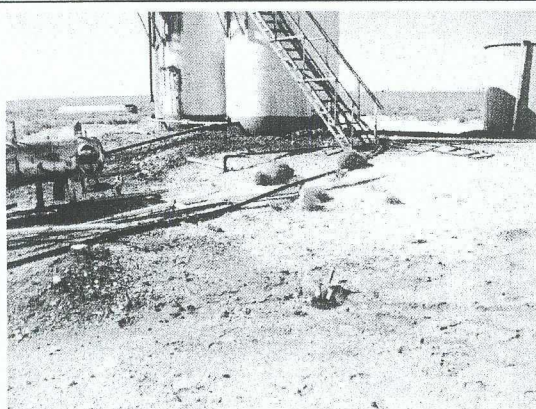


Photo of sample three location,
southwest of tanks.

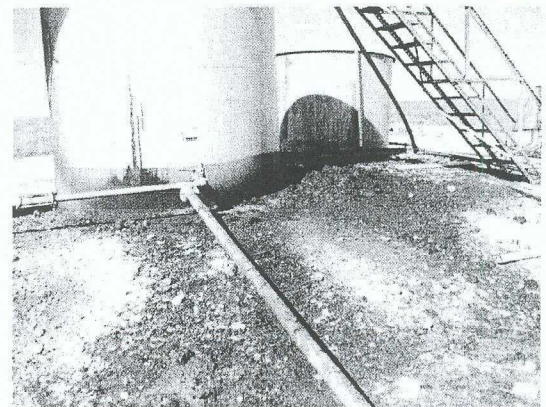
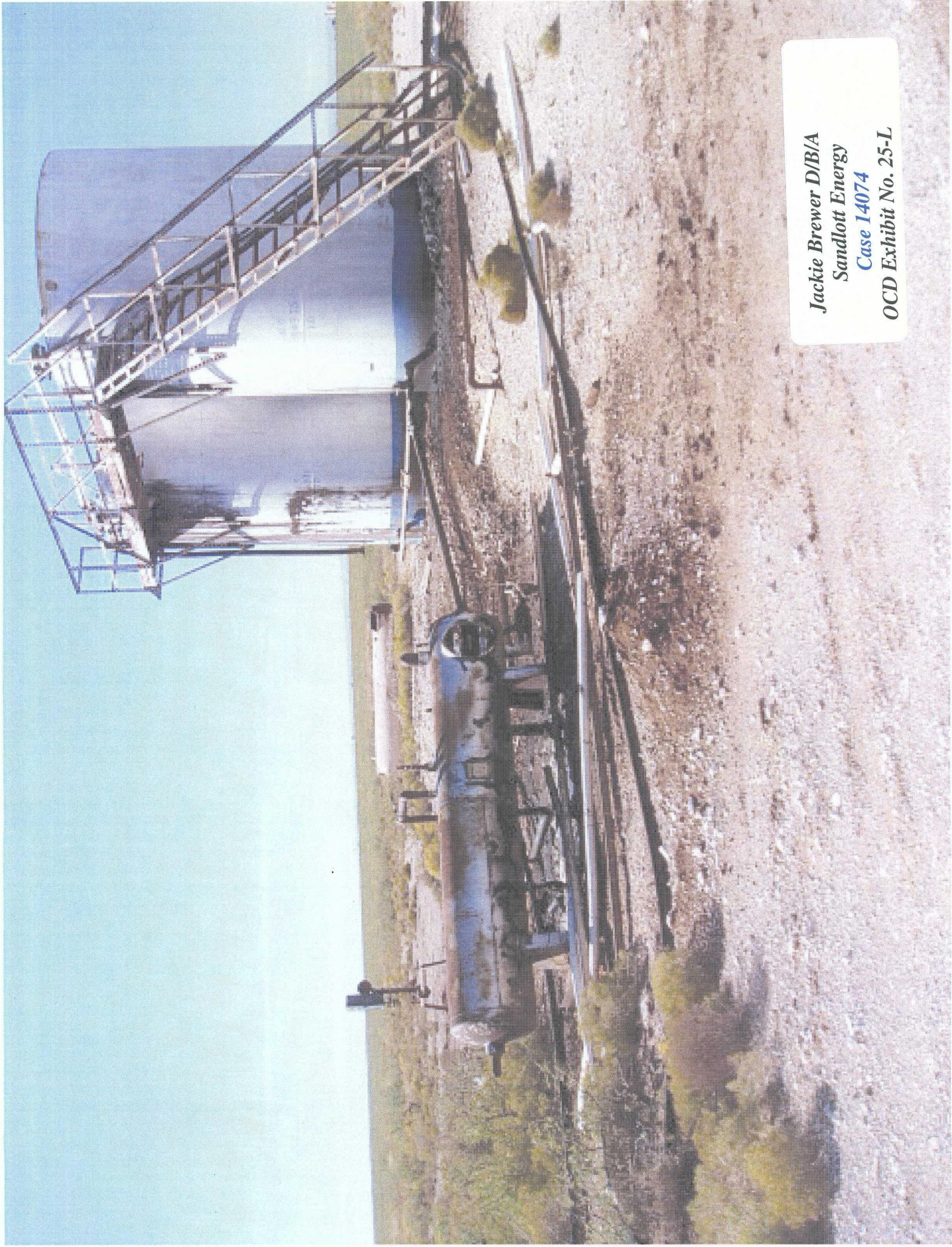
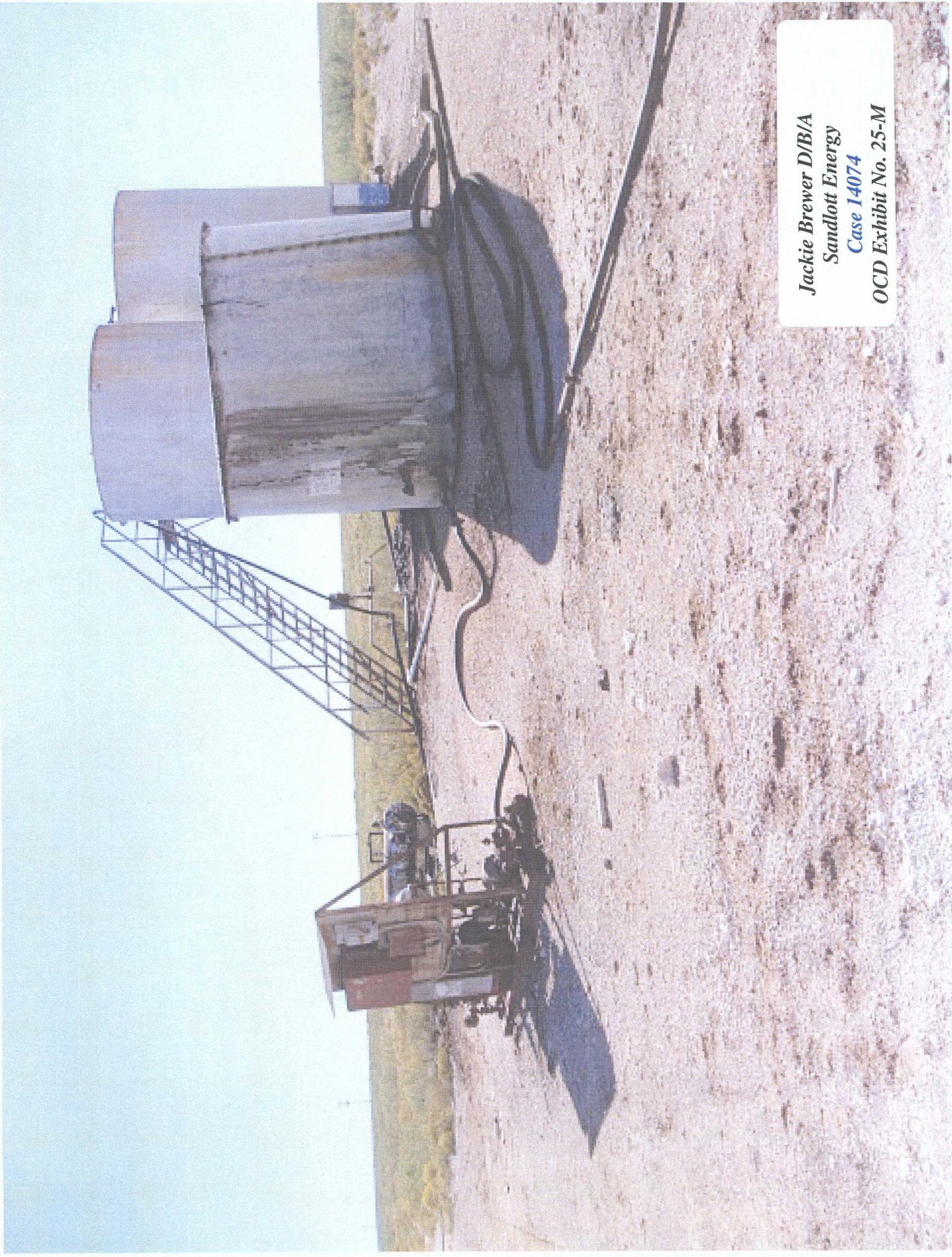


Photo of westernmost production
tank area.

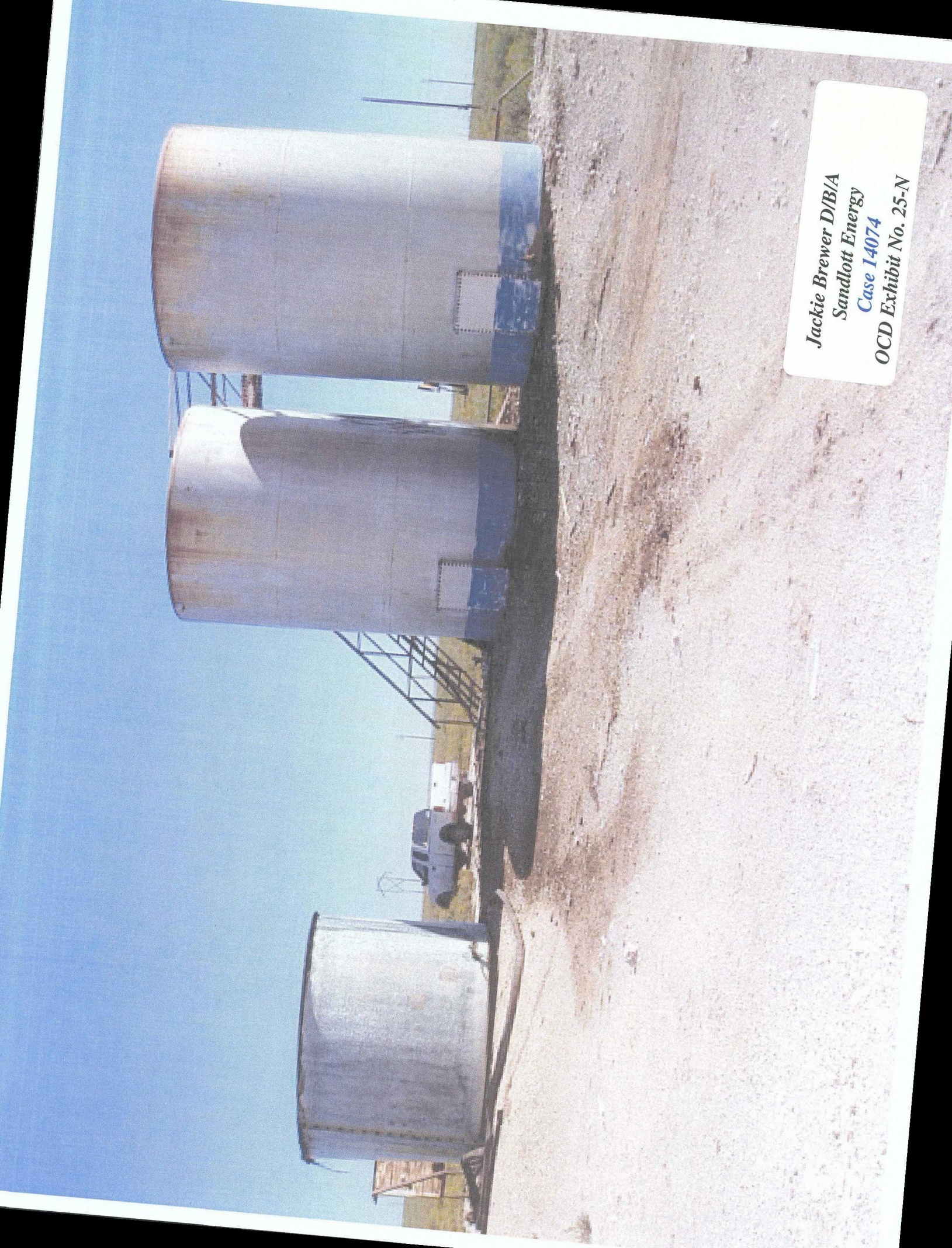


Jackie Brewer D/B/A
Sandlott Energy
Case 14074
OCD Exhibit No. 25-L

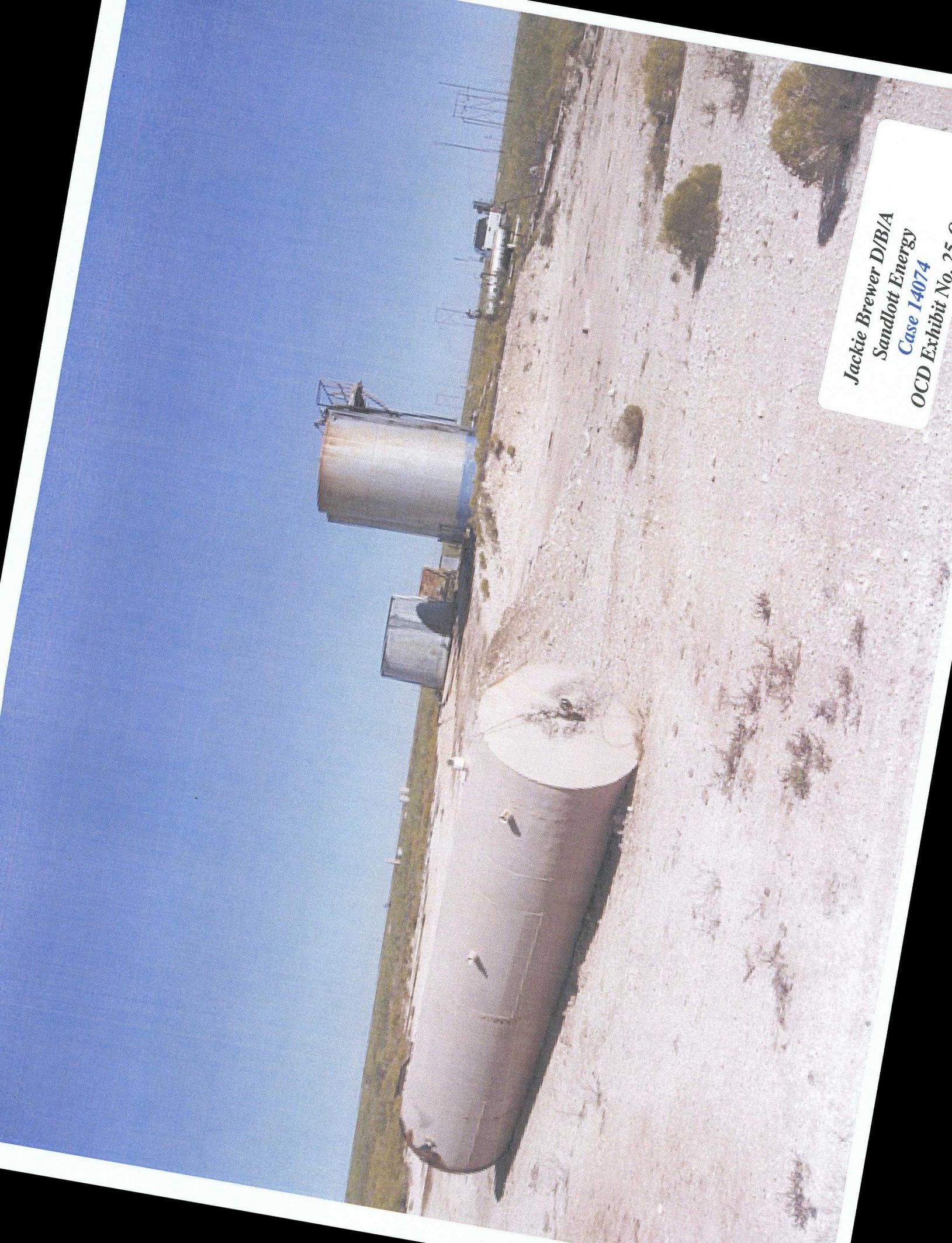


*Jackie Brewer D/B/A
Sandlott Energy
Case 14074
OCD Exhibit No. 25-M*

Jackie Brewer D/B/A
Sandlott Energy
Case 14074
OCD Exhibit No. 25-N



Jackie Brewer D/B/A
Sandlott Energy
Case 14074
OCD Exhibit No. 25





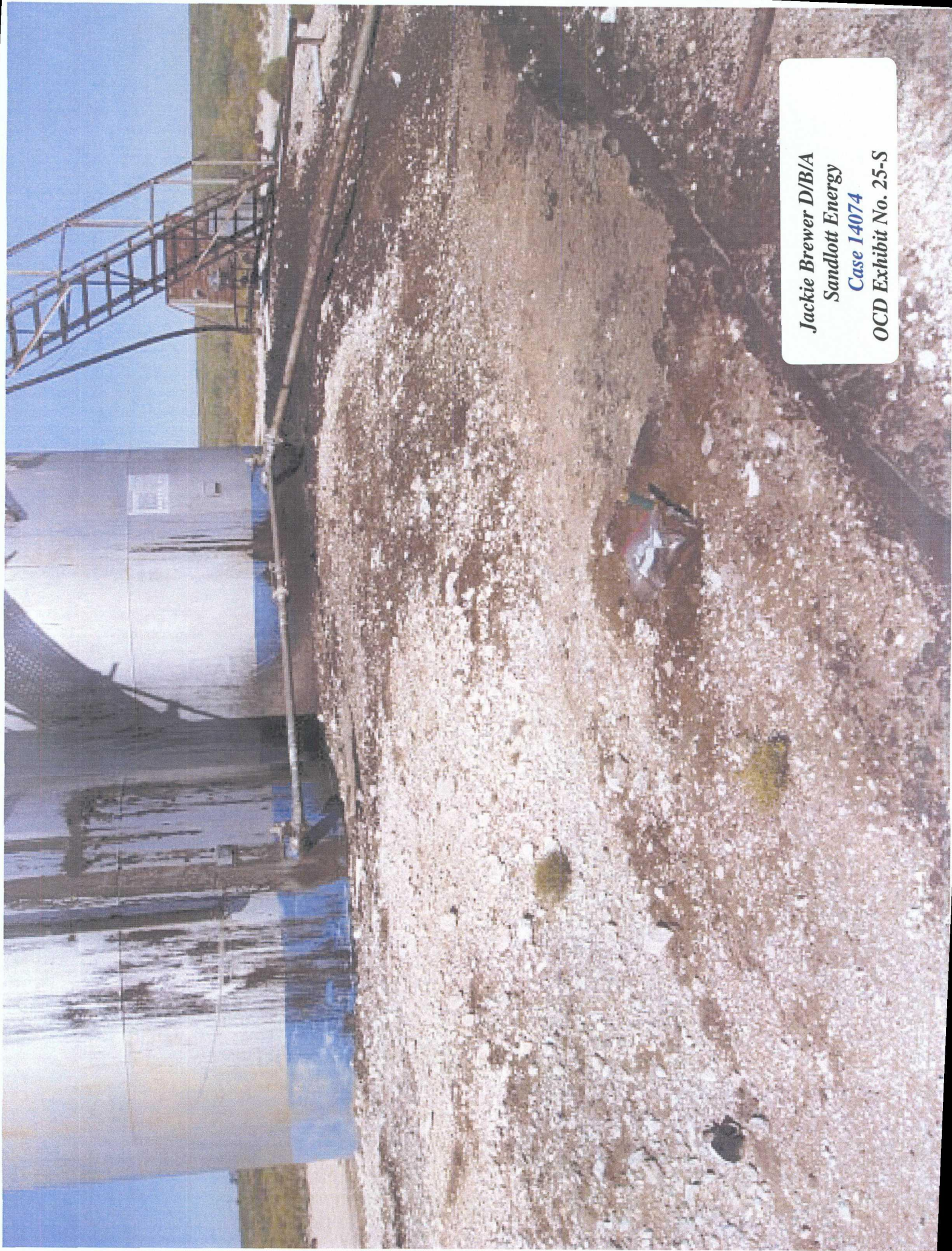
Jackie Brewer D/B/A
Sandlott Energy
Case 14074
OCD Exhibit No. 25-P




*Jackie Brewer D/B/A
Sandlott Energy
Case 14074
OCD Exhibit No. 25-Q*

Jackie Brewer D/B/A
Sandlott Energy
Case 14074
OCD Exhibit No. 25-R





*Jackie Brewer D/B/A
Sandlott Energy
Case 14074
OCD Exhibit No. 25-S*



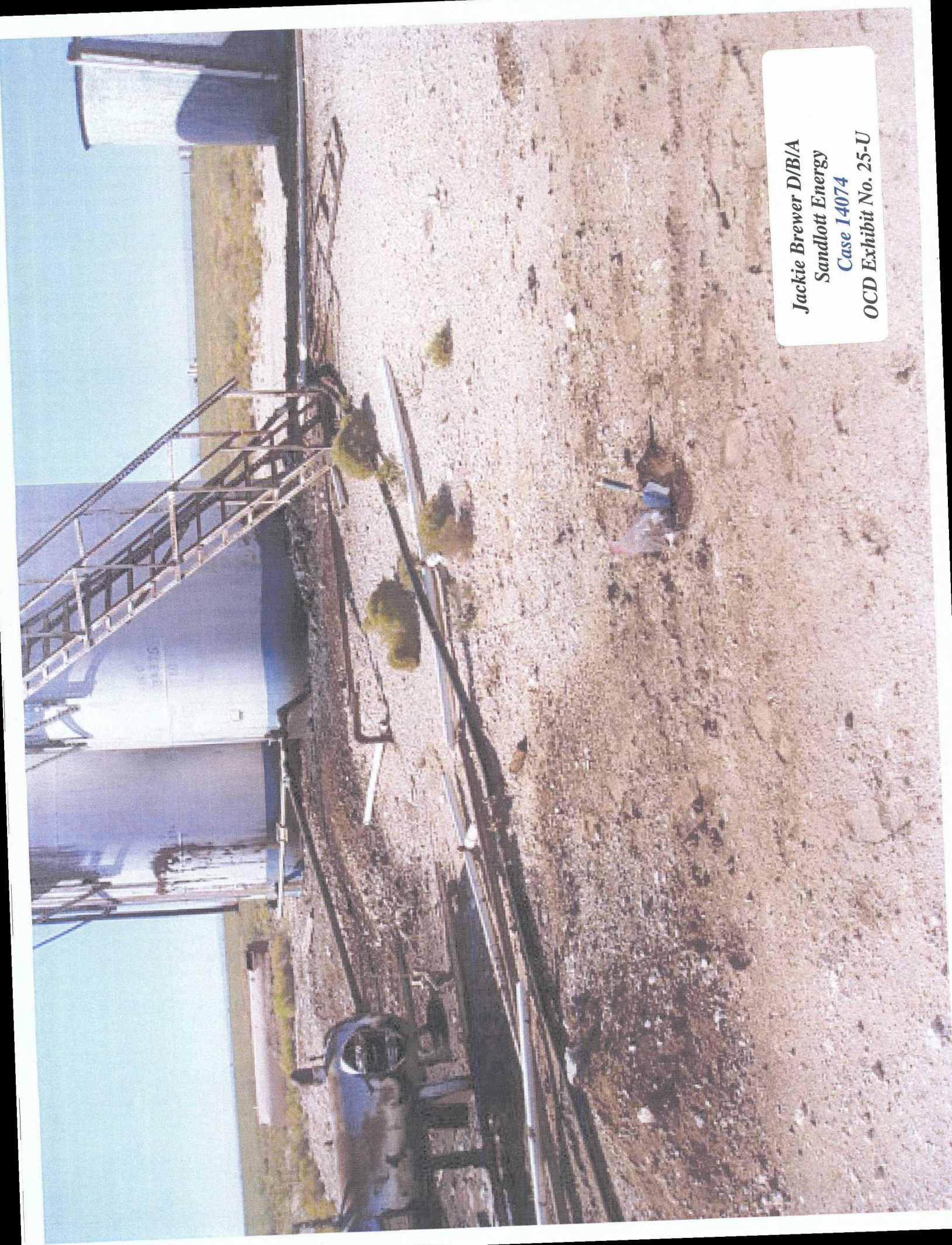
Jackie Brewer D/B/A
Sandlott Energy
Case 14074
OCD Exhibit No. 25-T

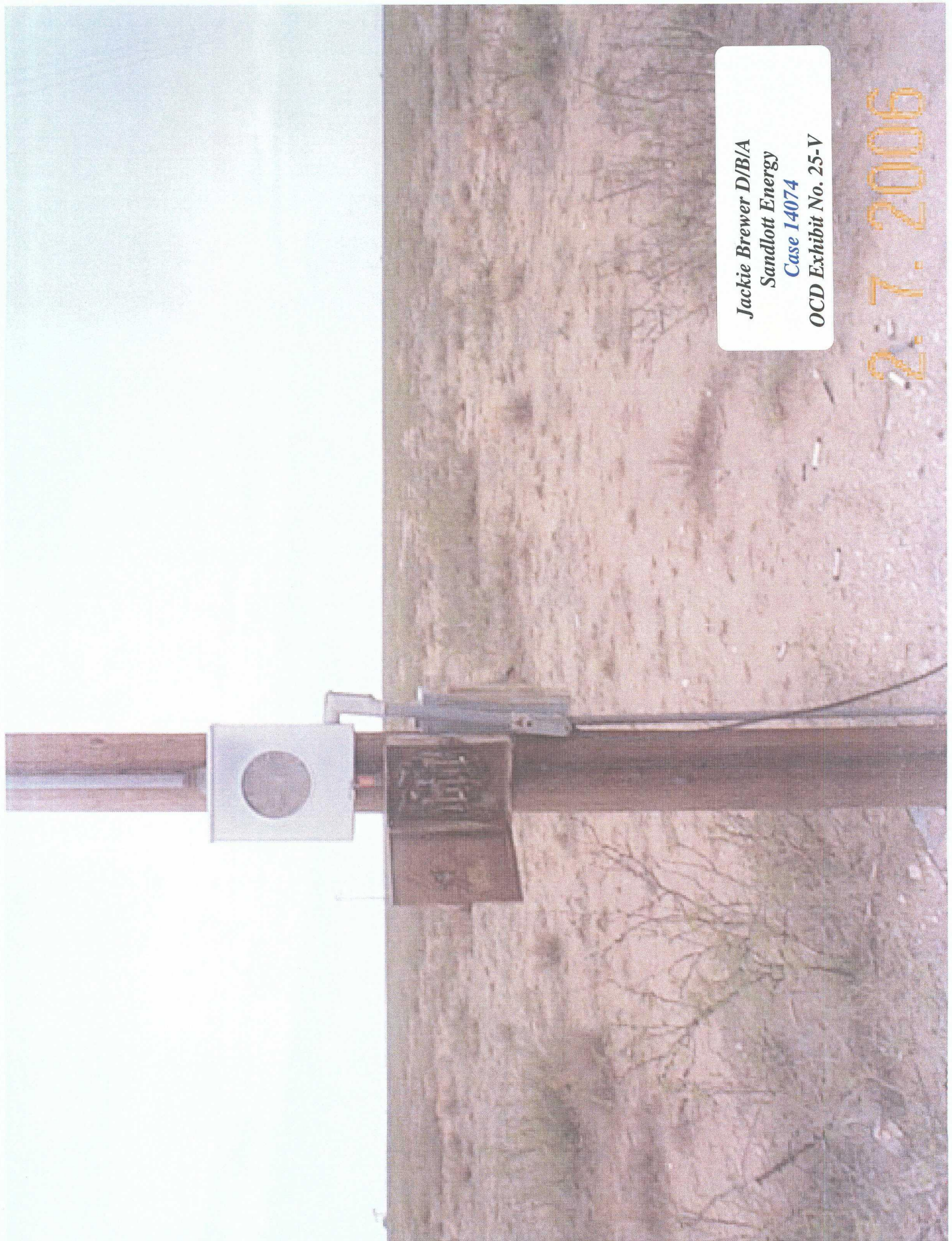
Jackie Brewer D/B/A

Sandlott Energy

Case 14074

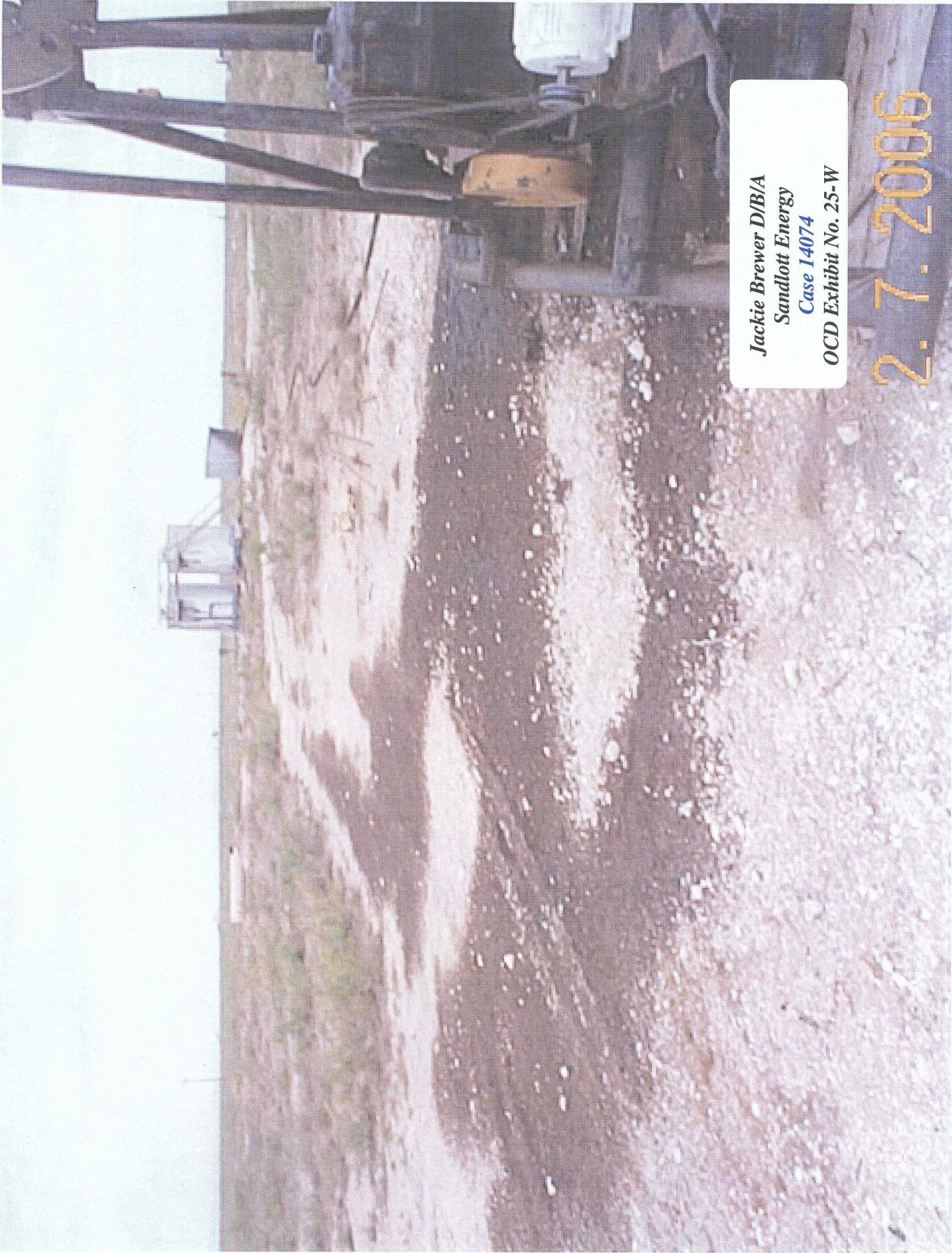
OCD Exhibit No. 25-U





Jackie Brewer D/B/A
Sandlott Energy
Case 14074
OCD Exhibit No. 25-V

2.7.2006



Jackie Brewer D/B/A
Sandlott Energy
Case 14074
OCD Exhibit No. 25-W

2.7.2006

Jackie Brewer D/B/A
Sandlott Energy
Case 14074

OCD Exhibit No. 25-X

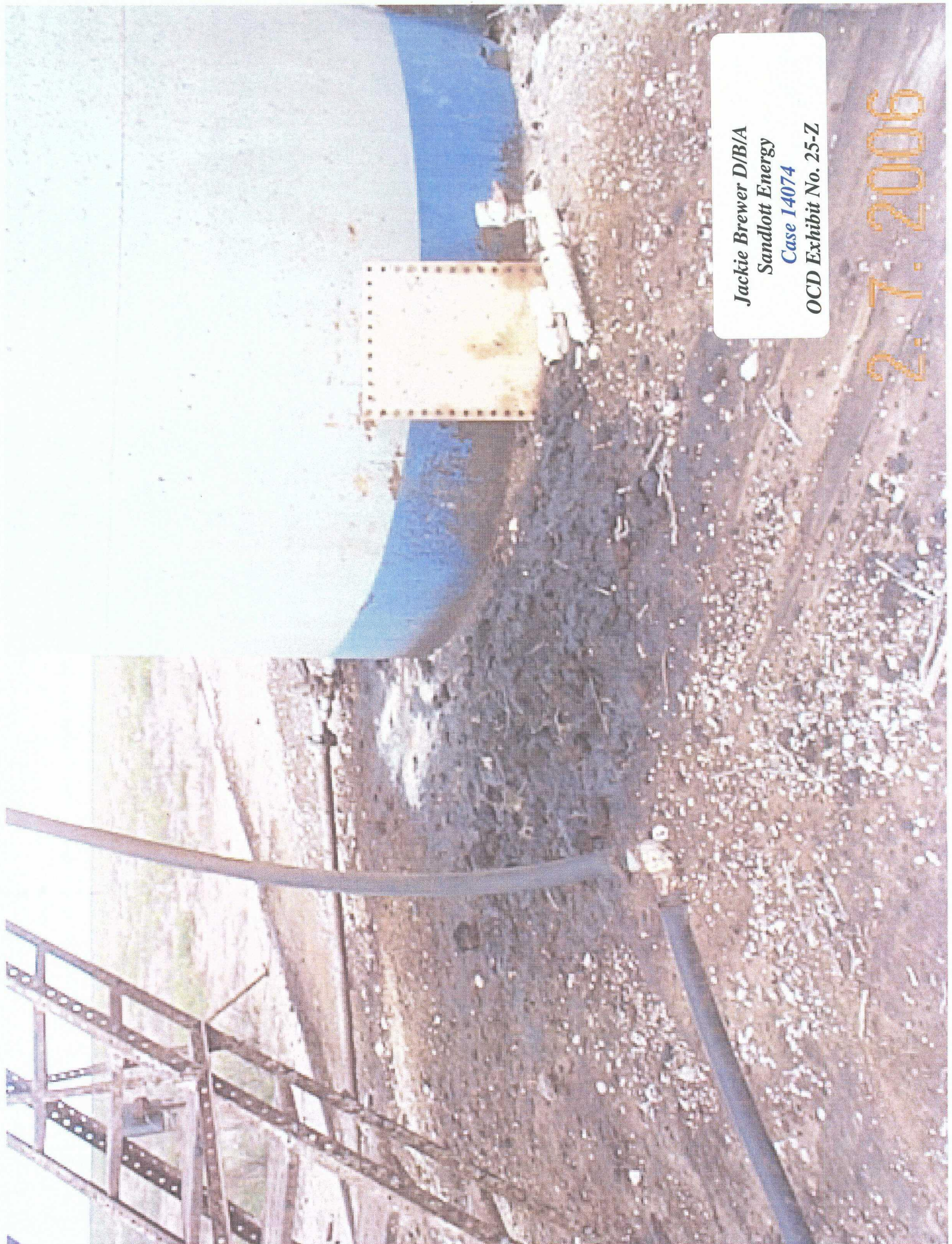
2.7.2006





Jackie Brewer D/B/A
Sandlott Energy
Case 14074
OCD Exhibit No. 25-Y

2-7-2006



Jackie Brewer D/B/A
Sandlott Energy
Case 14074
OCD Exhibit No. 25-Z

2.7.2006



Jackie Brewer D/B/A
Sandlott Energy
Case 14074
OCD Exhibit No. 25-AA

2.7.2006



Jackie Brewer D/B/A
Sandlott Energy
Case 14074
OCD Exhibit No. 25-BB

2.7.2006

440 VOLTS

440 VOLT

Jackie Brewer D/B/A
Sandlott Energy
Case 14074

OCD Exhibit No. 25-CC

2.7.2006

SANDLOTT ENERGY, INC.
BUS. 505-396-6769 MO. 505-396-1111

THOMAS ST. #1
NE/NE

SEC. 9-T18S-R28E
EDDY CO. NM-E-8180
00012269

Jackie Brewer D/B/A
Sandlott Energy
Case 14074
OCD Exhibit No. 25-DD

7-25-2007

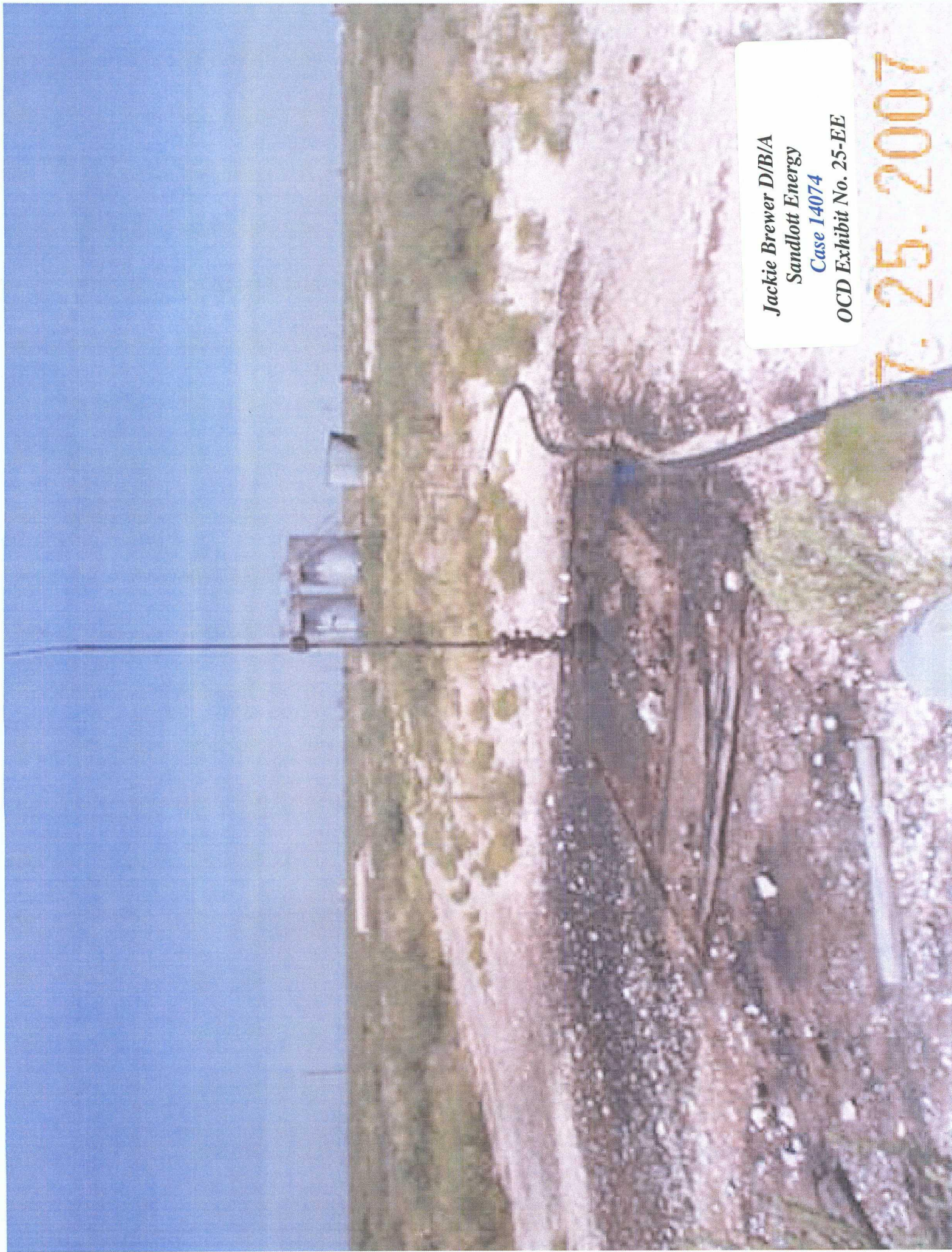
Jackie Brewer D/B/A

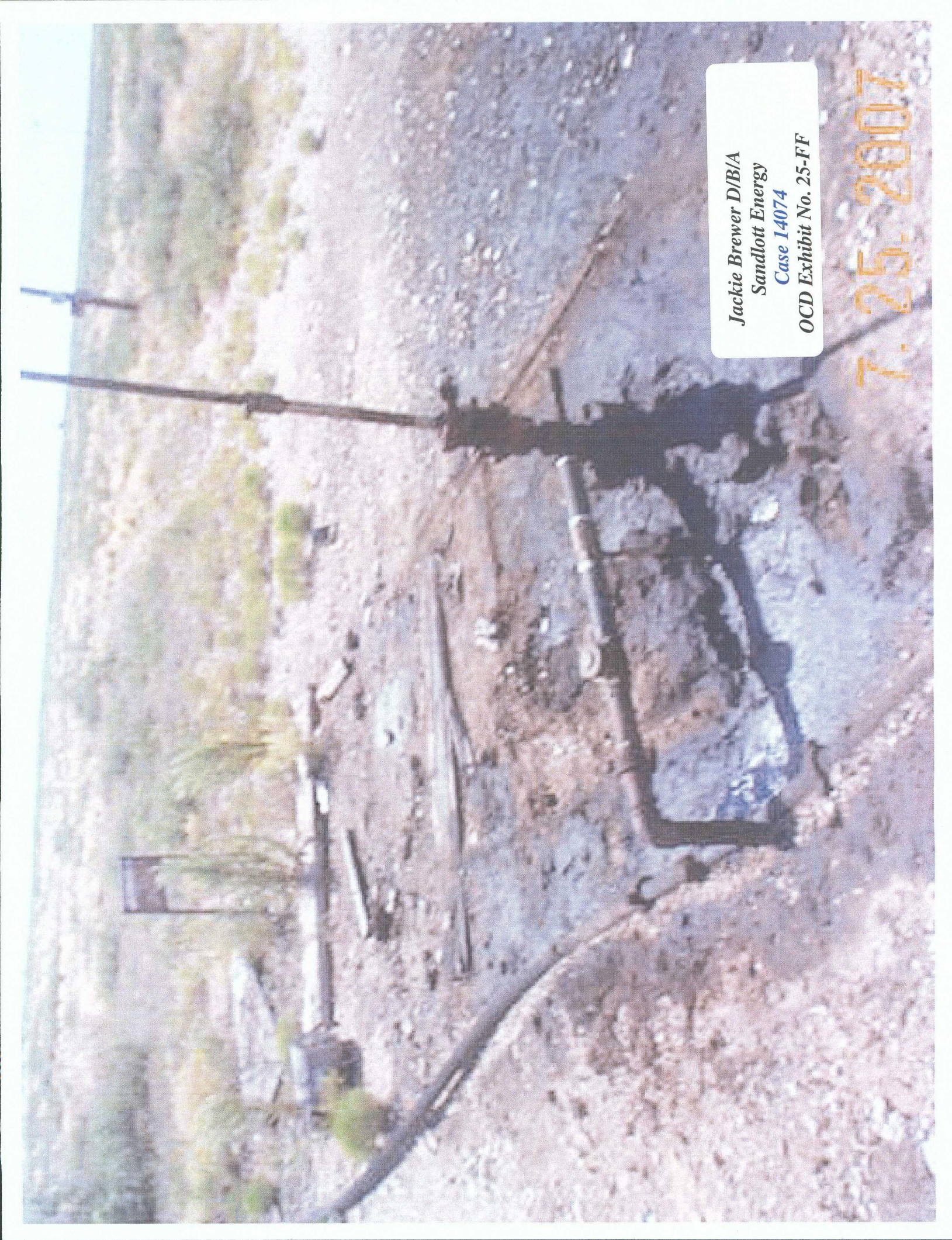
Sandlott Energy

Case 14074

OCD Exhibit No. 25-EE

7.25.2007

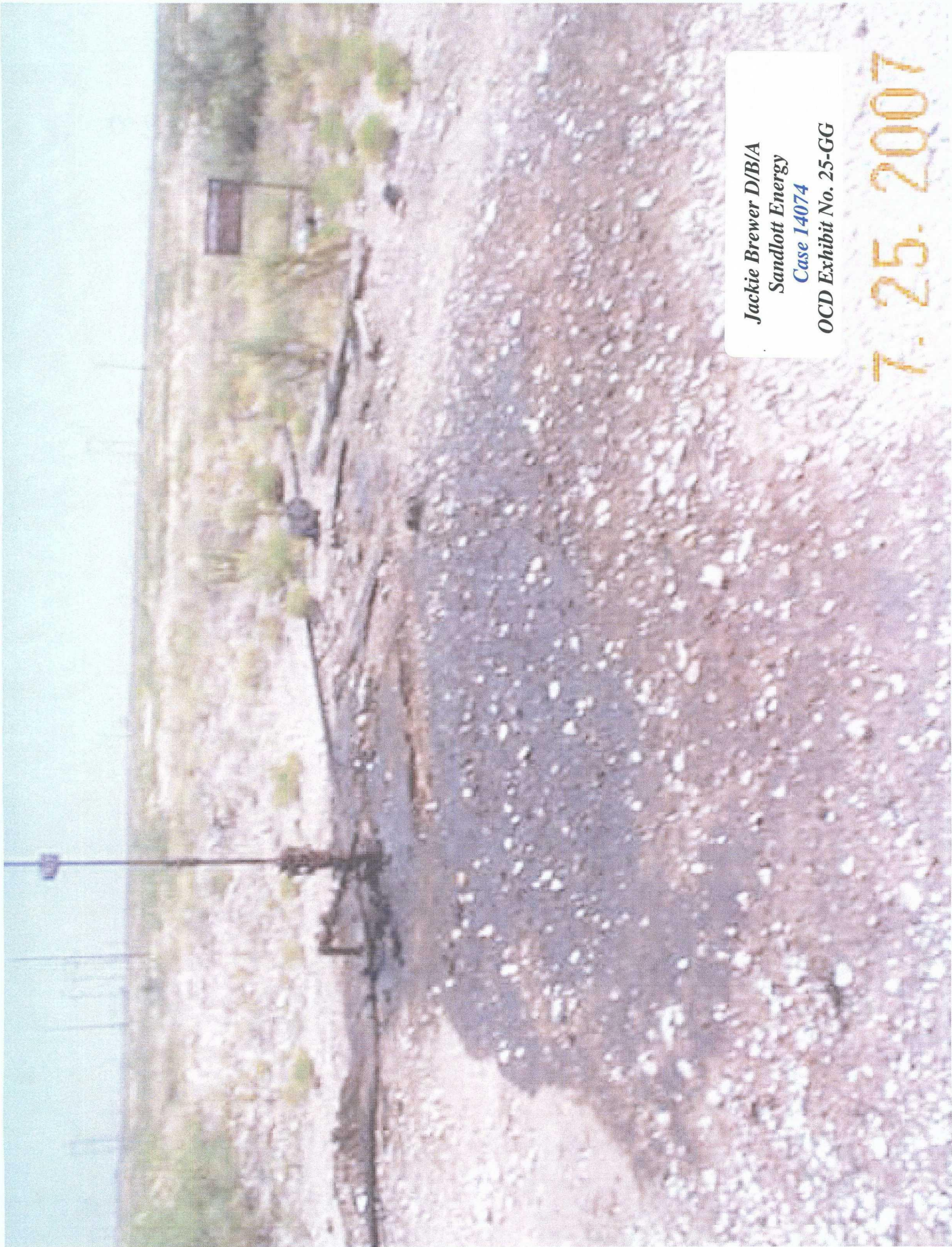




Jackie Brewer D/B/A
Sandlott Energy
Case 14074

OCD Exhibit No. 25-FF

7.25.2007

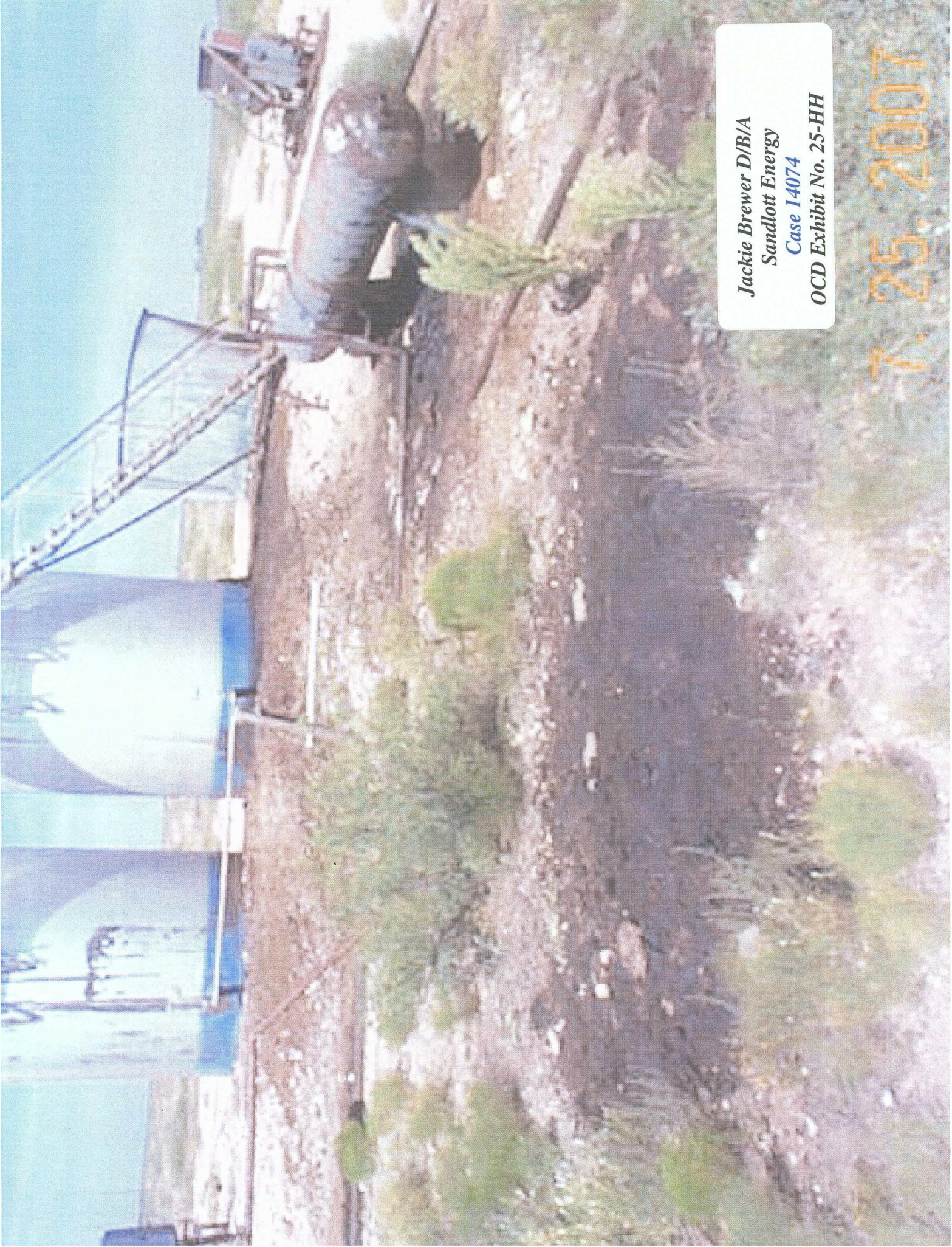


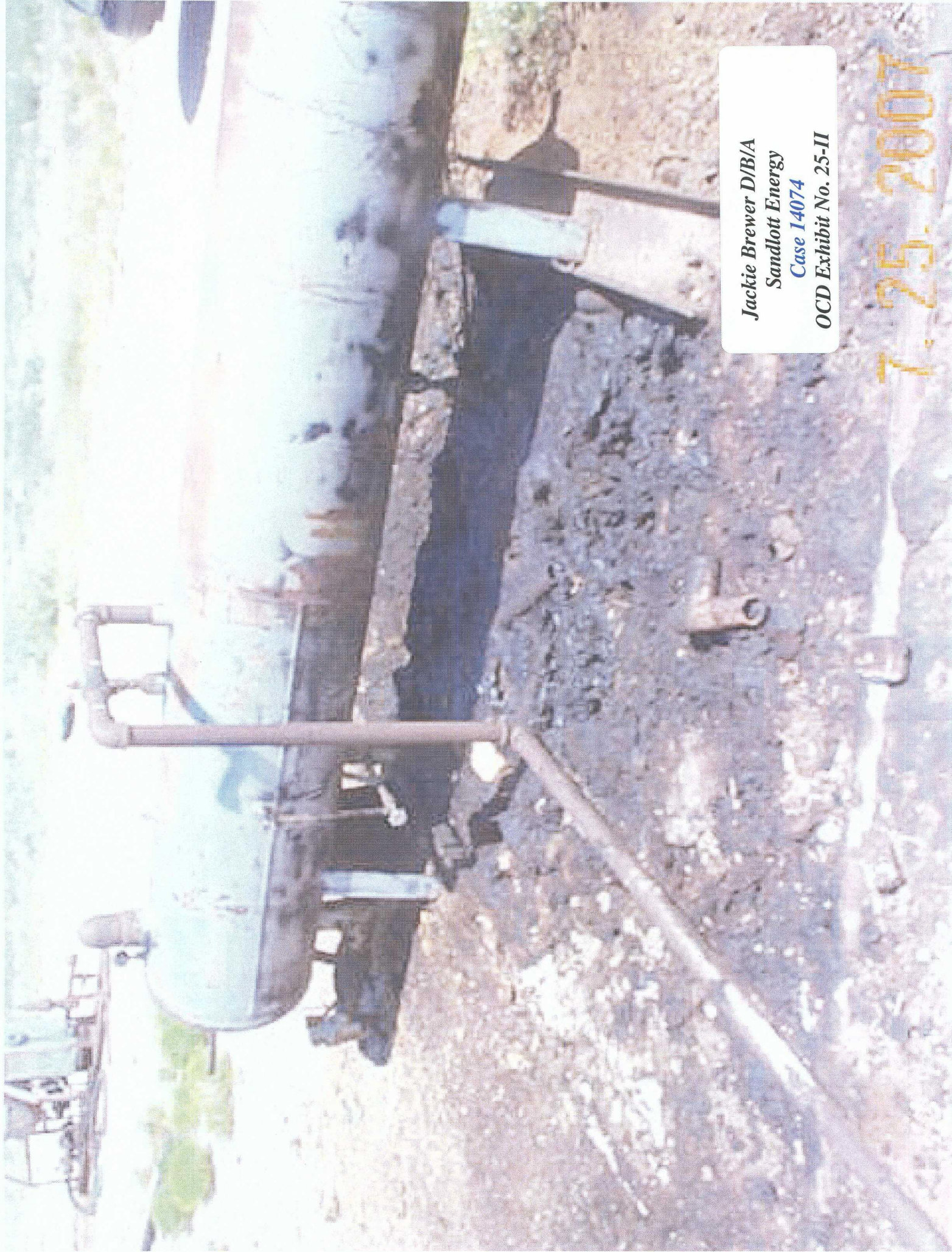
Jackie Brewer D/B/A
Sandlott Energy
Case 14074
OCD Exhibit No. 25-GG

7.25.2007

Jackie Brewer D/B/A
Sandlott Energy
Case 14074
OCD Exhibit No. 25-HH


7.25.2007





Jackie Brewer D/B/A
Sandlott Energy
Case 14074
OCD Exhibit No. 25-II


7.25.2007



Jackie Brewer D/B/A
Sandlott Energy
Case 14074


OCD Exhibit No. 25-JJ

7.25.2007



Jackie Brewer D/B/A
Sandlott Energy
Case 14074
OCD Exhibit No. 25-KK

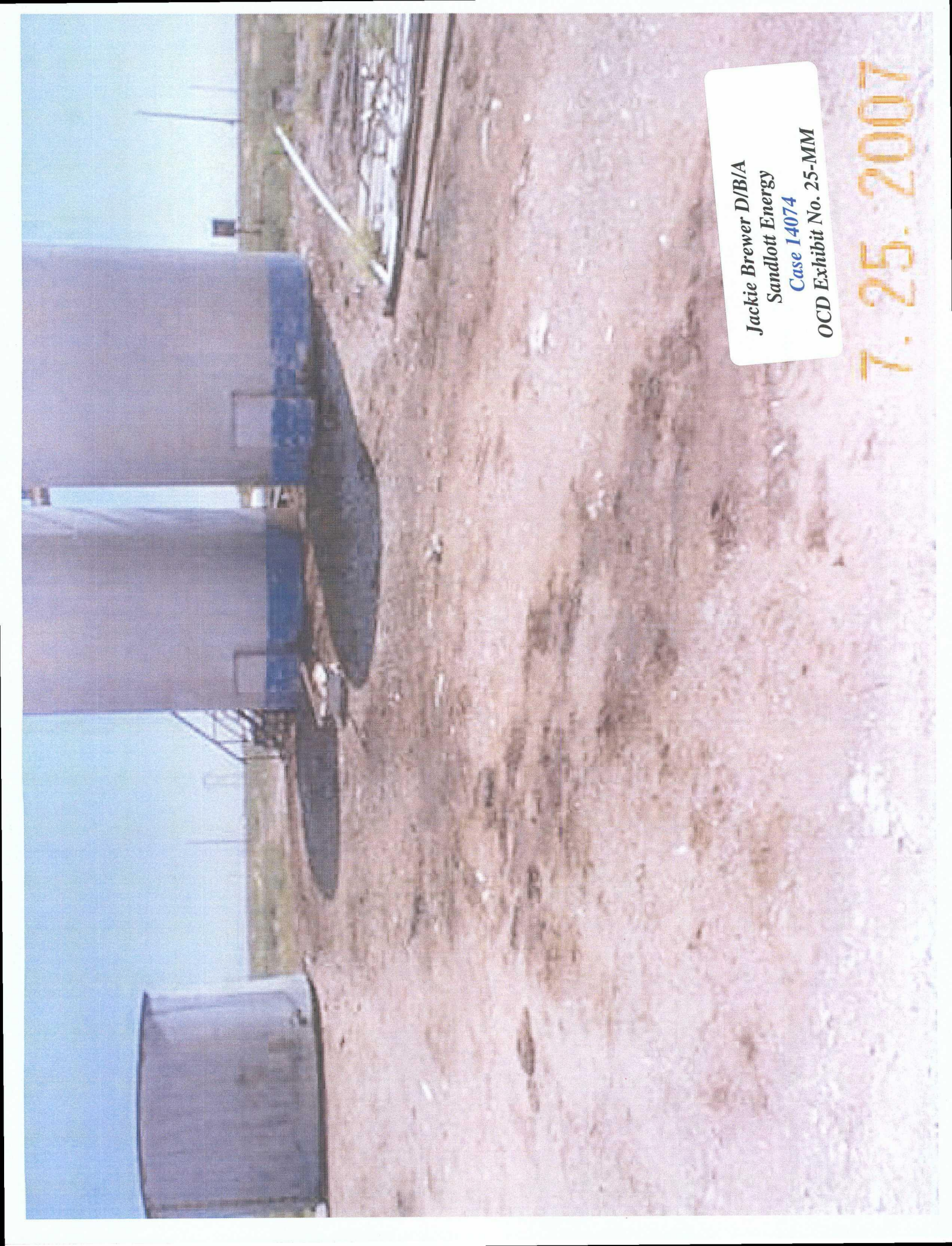
7-25-2007



A photograph showing a large, dark, cylindrical object, possibly a tank or barrel, lying on its side on a dirt or gravel surface. A person is standing in the background to the left of the object. The ground is uneven and covered with dirt and small rocks. In the bottom left corner, a portion of a metal structure, possibly a fence or scaffolding, is visible. A white label with black and blue text is affixed to the right side of the image.

Jackie Brewer D/B/A
Sandlott Energy
Case 14074
OCD Exhibit No. 25-LL

7. 25. 2007

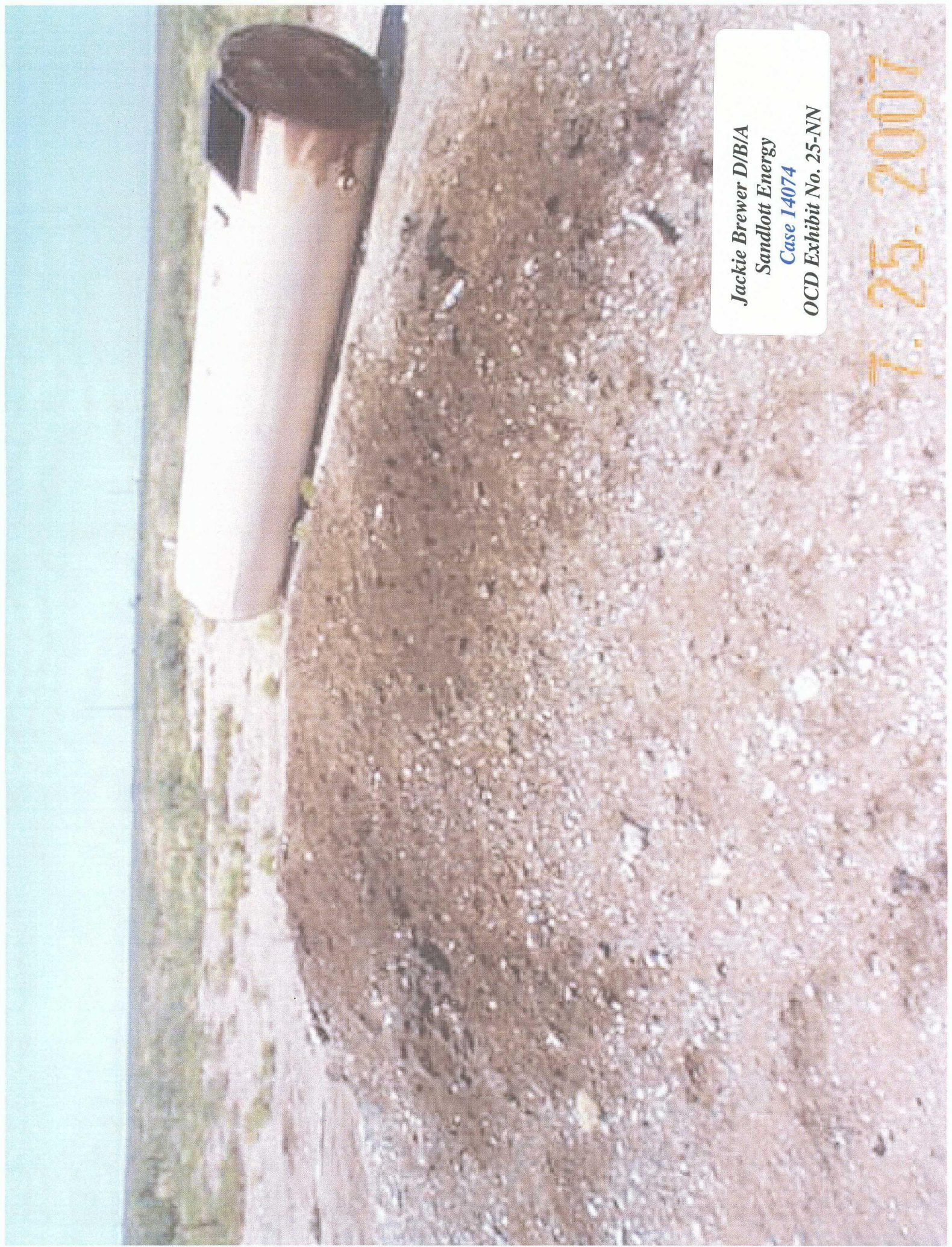
A photograph of an industrial site. In the foreground, there is a wide, unpaved dirt road or area with a reddish-brown hue. To the left, several large, cylindrical grey storage tanks are visible, some with blue horizontal bands. In the background, there are more industrial structures, including what appears to be a white building and some piping. The sky is clear and blue.

Jackie Brewer D/B/A
Sandlott Energy

Case 14074

OCD Exhibit No. 25-MM

7.25.2007



Jackie Brewer D/B/A
Sandlott Energy
Case 14074
OCD Exhibit No. 25-NN

7.25.2007