


**APPLICATION OF RSC RESOURCES LIMITED  
PARTNERSHIP FOR APPROVAL OF A NON-  
STANDARD OIL SPACING AND PRORATION  
UNIT AND FOR COMPULSORY POOLING,  
COUNTY, NEW MEXICO.**

**AFFIDAVIT OF RANDY S. CATE**

Oil Conservation Division  
Case No. \_\_\_\_\_  
Exhibit No. 2

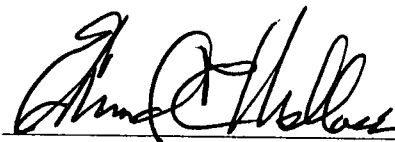
7. Exhibit D is a directional drilling plan and C-102 spacing unit plat for the well. A horizontal wellbore will test a greater reservoir length, increasing the chances for an economic completion. The entire horizontal lateral will be within the orthodox "producing area."

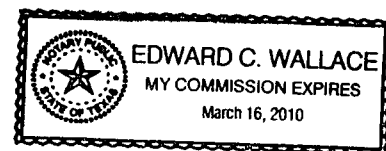
8. RSC Resources Limited Partnership respectfully requests expedited approval of the Order. RSC anticipates the drilling rig will be on location by middle of August, 2008.

  
\_\_\_\_\_  
Randy S. Cate

SUBSCRIBED AND SWORN TO before me this 22<sup>nd</sup> day of July, 2008 by Randy S. Cate.

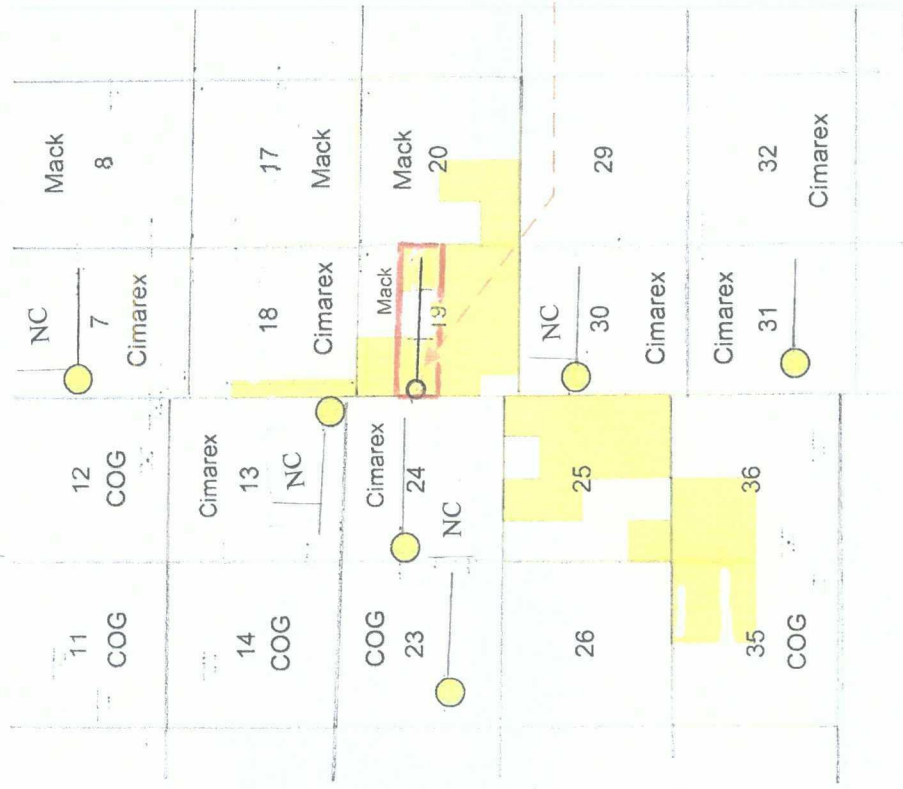
My Commission Expires: \_\_\_\_\_

  
\_\_\_\_\_  
Notary Public





# Lucky Wolf 19 Compulsory Pooling

## AREA PRODUCTION / ACTIVITY



LUCKY WOLF 19 STATE COM. 1H  
SECTION 19-T16S-29E  
EDDY CO., NM

### Legend

 Completed Well  
 New Completion, No Data

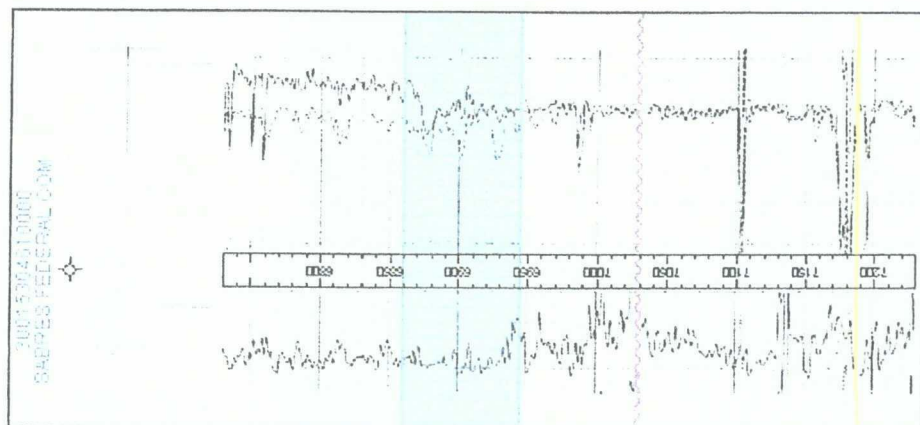
Well	Operator	First Prod	Cum to 5-1-08				4-08 Daily			
			Oil-Mbo	Gas-MMcf	Wtr-Mbw	Oil-Bopd	Gas-Mcfd			
Bear Bryant 31 FC # 1	Cimarex	Dec-07	7	8	3	29	35			
Moose 23 Fed 1Y	COG Oper LLC	Oct-07	6	7	19	28	24			

EXHIBIT

**A**

# Lucky Wolf 19 Compulsory Pooling

TYPE LOG - SABRES 19 FED COM. 1; D&A 1998



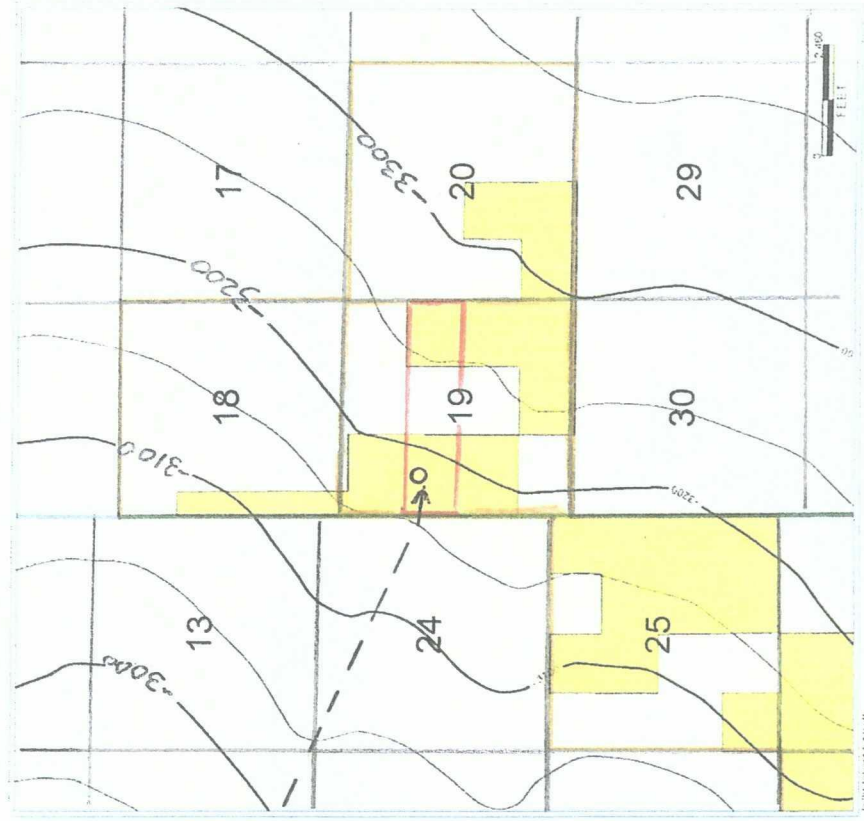
EXHIBIT

**B**

RSC Resources, L.P.  
LUCKY WOLF 19 STATE COM. 1H  
SECTION 19-T16S-29E  
EDDY CO., NM

# Lucky Wolf 19 Compulsory Pooling

WOLFCAMP PAY STRUCTURE



TYPE LOG - SABRES 19 FED COM. 1

EXHIBIT

5

RSC Resources, L.P.  
LUCKY WOLF 19 STATE COM. 1H  
SECTION 19-T16S-29E  
EDDY CO., NM

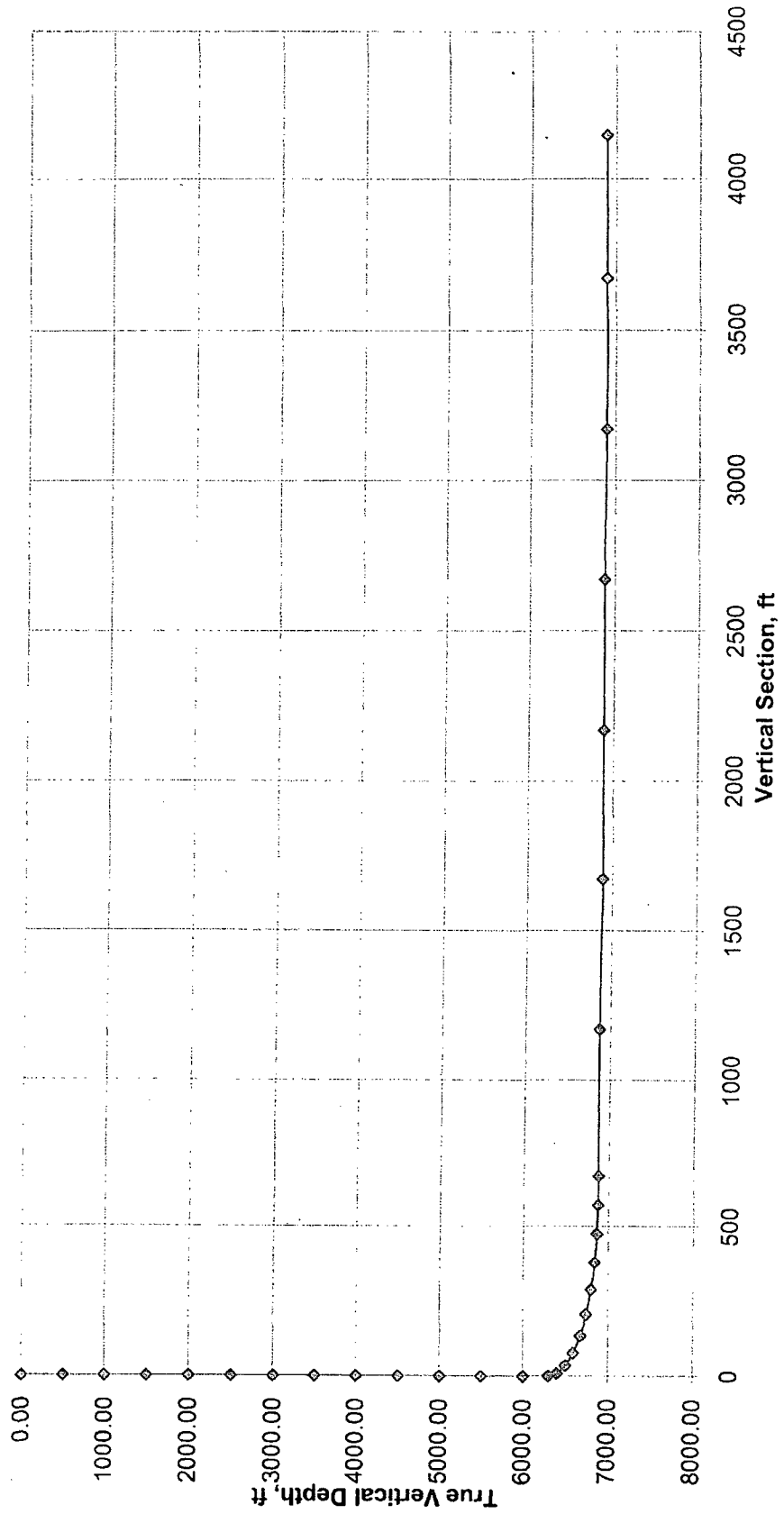
# Lucky Wolf 19 Compulsory Pooling

EXHIBIT

D

## WELL PLAN

Sec 19 Twn 16S R 29E  
Vertical Section vs TVD



RSC Resources, L.P.  
LUCKY WOLF 19 STATE COM. 1H  
SECTION 19-T16S-29E  
EDDY CO., NM

LUCKY WOLF 19 STATE COM. 1H  
SECTION 19-T16S-29E  
EDDY COUNTY, NM

