

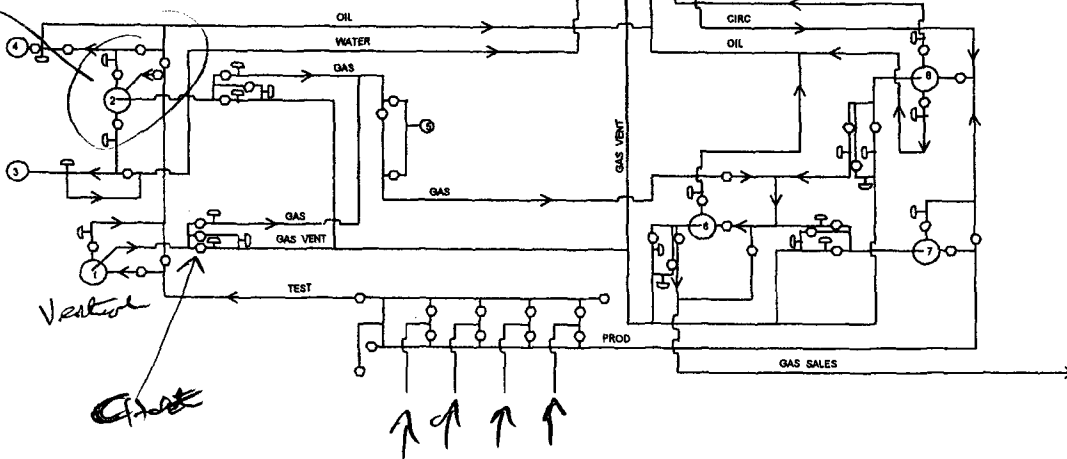
HILL A 7 BATTERY

CONSERVATION DIVISION

NUMBER _____

EXHIBIT 5

Water Note



Test once/month
Prod. allocated FROM Test

- 1 Test Separator
- 2 Test Heater Treator
- 3 Water - Test Pot
- 4 Oil - Test Pot
- 5 Test Gas Meter
- 6 Production & Test "Final" Gas Separator
- 7 Production Separator
- 8 Production Heater Treator
- 9 & 10 Water Tanks
- 11, 12, 13 & 14 Stock Tanks

PRODUCTION SYSTEM CLOSED

- 1 Oil Sales by tank gauge to truck
- 2 Seal Requirements
 - A. Production Phase
 - 1 All valves 3 & 5 sealed closed
 - B Sales Phase (from Tank 11)
 - 1 Valves 1 & 2 sealed closed
 - 2 Valve 3 on tanks 12, 13 & 14 sealed closed
 - C Sales Phase (from Tank 12)
 - 1 Valves 1 & 2 sealed closed
 - 2 Valve 3 on tanks 11, 13 & 14 sealed closed
 - D Sales Phase (from tank 13)
 - 1 Valves 1 & 2 sealed closed
 - 2 Valve 3 on tanks 11, 12 & 14 sealed closed
 - E Sales Phase (from tank 14)
 - 1 Valves 1 & 2 sealed closed
 - 2 Valve 3 on tanks 11, 12 & 13 sealed closed

POGO PRODUCING
 COMPANY
 SITE FACILITY DIAGRAM
 PROPOSED
 Hill A 7 Battery
 540' FLS & 1850' FEL
 Unit O
 Section 27, T-23-S, R-37-E
 Lea County, New Mexico
 API #30-025-35012

LOCATION OF SITE SECURITY PLAN
 Pogo Producing Company
 300 N Marienfeld Suite 600
 P. O. Box 10340
 Midland, Texas 79702-7340