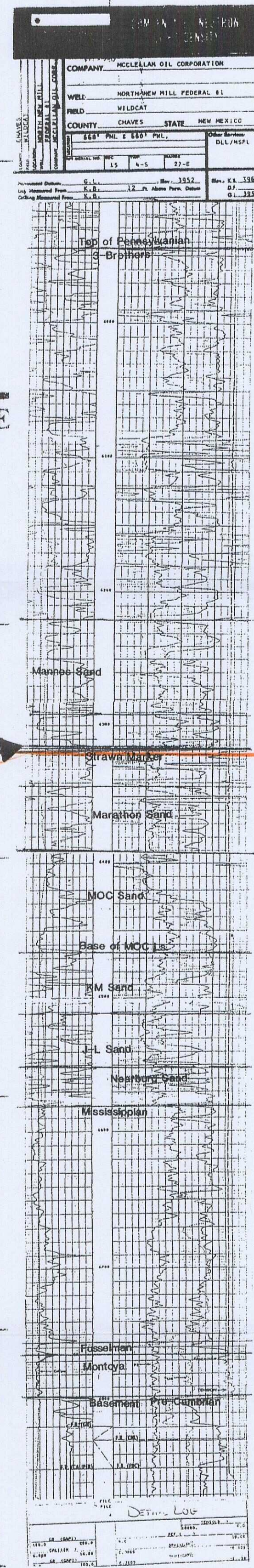


TYPE LOG



PROPOSED THUNDERHEAD UNIT AREA Chaves County, New Mexico **STRUCTURE ON TOP OF THE STRAWN MARKER**

C. I = 50 Feet

Scale In Feet

Leo Lammers, Geologist

Date:

Oil Conservation Division
Case No. 9 14284
Exhibit No. 2