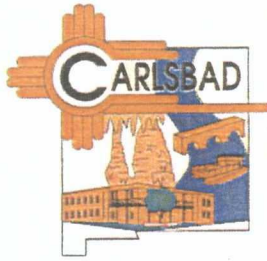


PAUL BACA PROFESSIONAL COURT REPORTERS

OIL CONSERVATION DIVISION

CASE # 14190

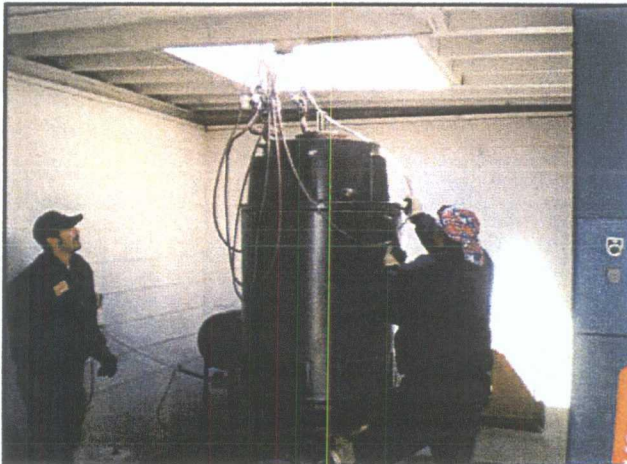
**EXHIBIT
13**



City of Carlsbad Municipal Water System

2007 Annual Consumer Report on the Quality of Your Drinking Water

For areas serviced by the Carlsbad Municipal and
Double Eagle Water Systems



Case No. 14,190
Dennis Langlitz
Exhibit #13

**

Unregulated, however, below suggested EPA Maximum Contaminant Level (MCL) of 250 ppm

Although we ran many other tests, only the listed substances were found.

Table C: Double Eagle Contaminants. If you live or work in Zone 2 (see Table A above), use this table:

Contaminant	Date Tested	Unit	MCL What's Allowed	MCLG	Detected Level What's in your Water	Range What's in your Water	Major Sources	Violation
Inorganic Contaminants								
Arsenic	8/14/07	ppb	50*	0	9.3	6.6 – 13.4	Erosion of natural deposits; Runoff from orchards; Runoff from glass and electronics production wastes	NO
Barium	8/14/07	ppm	2	2	0.103	0.103 - 0.103	Discharge of drilling wastes; Discharge from metal refineries Erosion of natural formations	NO
Chromium	8/14/07	ppb	100	100	0.0	0.0	Discharge from steel and pulp mills. Erosion of natural formations	NO
Selenium	8/14/07	ppb	50	50	2.0	2.0 – 2.0	Discharge from petroleum and metal refineries; Erosion of natural deposits	NO
Thallium	8/14/07	ppb	2.0	0.5	0.00	0.00- 0.00	Leaching from ore-processing sites; discharge from electronics, glass, and pharmaceutical companies	NO
Nitrate	8/14/07	ppm	10	10	3.21	3.21 – 3.21	Runoff from fertilizer use; Leaching from septic tanks, sewage; Discharge from mines. Erosion of natural formations	NO
Fluoride	8/14/07	ppm	4	4	0.785	0.785 - 0.785	Erosion of natural deposits; Water additive which promotes strong teeth; Discharge from fertilizer and aluminum factories	NO
Nickel	8/14/07	ppm	9,999	9,999	0.0	0.0 – 0.0	Erosion of natural deposits, metal shops	NO
Sulfate	5/4/00	ppm	9,999	250	51.00	51 – 51	Erosion of natural deposits	NO
Radioactive Contaminants								
Uranium	11/27/06	ppb	30	30	3.32	3.32	Erosion of natural deposits	NO
Alpha emitters	11/27/06	pCi/L	15	0	ND	ND	Erosion of natural deposits	NO
Beta/photon emitters	11/27/06	pCi/L	50	0	3.703	3.703 – 3.703	Decay of natural and man-made deposits	NO
Combined Radium 226/228	11/27/06	pCi/L	5	0	1.186	1.186 – 1.186	Erosion of natural deposits	NO
Volatile Organic Contaminants								
THMs [Total Trihalomethanes]	2/20/07	ppb	80	0	0	0	By-product of drinking water chlorination	NO
HAA5	7/31/07	ppb	60	5.4	5.4	5.4	By-product of drinking water chlorination	NO
Disinfectant								
Chlorine Residual	12/31/07	ppm	4	4	0.38	0.38	By-product of drinking water chlorination	NO

Water-Quality Table Footnotes

* The current EPA regulated MCL level of Arsenic 10.0 ppb. Arsenic is a naturally occurring mineral known to cause cancer in humans in high concentrations.

** Unregulated, however, below suggested EPA Maximum Contaminant Level (MCL) of 250 ppm

Although we ran many other tests, only the listed substances were found.

Explanation of Violations

NO VIOLATIONS THIS PERIOD