



5232

RECEIVED OCD

2011 MAR 31 A 11:42

**EOG Resources, Inc.**  
P.O. Box 2267  
Midland, TX 79702  
(432) 686-3600

March 16, 2011

Bureau of Land Management  
Carlsbad Field Office  
620 E. Greene St.  
Carlsbad, New Mexico 88220-6292

State of New Mexico  
Oil Conservation Division  
1220 South St. Francis Drive  
Santa Fe, New Mexico 87504

Re: Phantom Draw Federal Exploratory Unit  
Serial No. NMNM 71013X  
2011 Plan of Development  
Eddy County, New Mexico  
EOG Resources, Inc. Contract K0010525

Gentlemen:

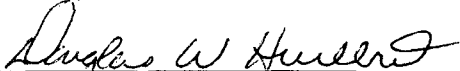
EOG Resources, Inc. (EOG), as Unit Operator of the Phantom Draw Federal Exploratory Unit (PDFEU), hereby submits for your approval, our 2011 Plan of Development.

Items included are as follows: Planned 2011 operations; previous year operations; current status of all wells within the unit; production graphs for each productive reservoir. Also attached is a current map, showing respectively the units: structural and geologic interpretations; participating area boundaries; wells, flow-lines, and roads.

It is understood that approval of this plan does not approve the work covered by the plan. Individual approval is still required for such items as APDs/ROWs/etc.

Any modifications or additions to this Plan of Development will be filed as supplements to the plan.

Sincerely,

  
Douglas W. Hurlbut  
Land Specialist

### **2011 Planned Operations:**

#### **Drilling -**

At this time, EOG does not plan any new drill wells in the PDFEU.

#### **Completions -**

At this time, EOG does not plan any new drill wells in the PDFEU.

#### **Plug Back -**

At this time, EOG does not plan any plug backs in the PDFEU.

#### **Conversion -**

At this time, EOG does not plan any conversions in the PDFEU.

#### **Abandonment -**

WELL NAME & NUMBER	API NUMBER	TWN	RNG	SEC	UL	FORMATION NAME
Phantom Draw Fed Unit #3	3001531131	26S	31E	20	0	Wolfcamp

#### **Other surface disturbing operations -**

None

**Previous Year Operations (2010):**

**Drilling –**

EOG did not drill any new wells in the PDFEU in 2010.

**Completions –**

EOG did not complete any wells in the PDFEU in 2010.

**Plug Back –**

EOG did not plug back any wells in the PDFEU in 2010.

**Conversion –**

EOG did not complete any conversions in the PDFEU in 2010.

**Abandonment –**

None

**Other surface disturbing operations –**

None

**Status of all Wells within the Unit:**

WELL NAME & NUMBER	API NUMBER	COMP DATE	ZONE	STATUS
Phantom Draw Fed Unit #4	3001531235	10/7/2000	Wolfcamp	Flowing

**Production Graphs:**

See Attachments

**Map of structural and geologic interpretations, participating area boundaries, wells, flow-lines, and roads:**

See Attachment

The working interest owners have been provided a copy of this 2011 Plan of Development. EOG Resources, Inc. and the working interest owners believe that all current Phantom Draw Federal Exploratory Unit obligations have been satisfied.

In accordance with Section 10 of the Phantom Draw Federal Exploratory Unit Agreement, please signify your approval of the 2011 Plan of Development by executing in the signature block below. Please return one approved copy to EOG Resources, Inc. at the letterhead address.

Should you have any questions or comments in this regard, please contact me at 432-686-3610.

---

**Bureau of Land Management**

---

**Date**

---

**New Mexico Oil Conservation Division**

---

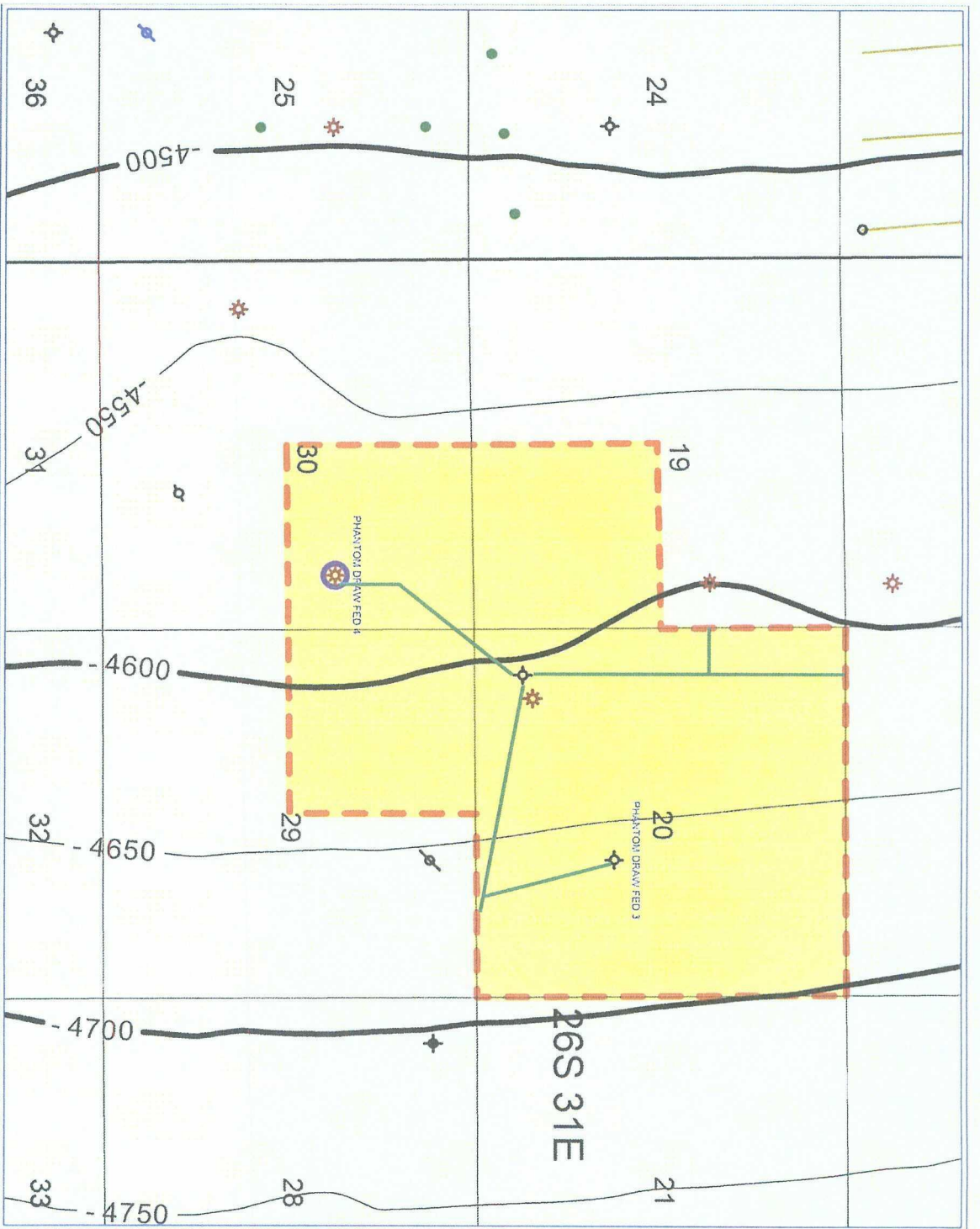
**Date**

The foregoing approvals are for the 2011 Plan of Development for the Phantom Draw Federal Exploratory Unit, Eddy County, New Mexico.

cc: Yates Petroleum Corporation  
105 South Fourth St.  
Artesia, New Mexico 88210  
Attn: Janet Richardson

Mountain Home Oil Company  
4505 Meadowlark  
Midland, Texas 79707  
Attn: Ken Gray

Tom R. Cone  
P. O. Box 778  
Jay, Oklahoma 74346



Phantom Draw Unit  
 Eddy County, NM  
 Twn / Rng:  
 26S - 31E

Operating Unit Boundary  
 Roads/Pipelines

Phantom Draw Unit  
 Eddy County, NM  
 Twn / Rng:  
 26S-31E

Structure on  
 Top Bone Spring Lime  
 Contour Interval 50 feet

Operating Unit  
 Boundary



Phantom Draw Unit  
Eddy County, NM  
Twn / Rng:  
26S - 31E