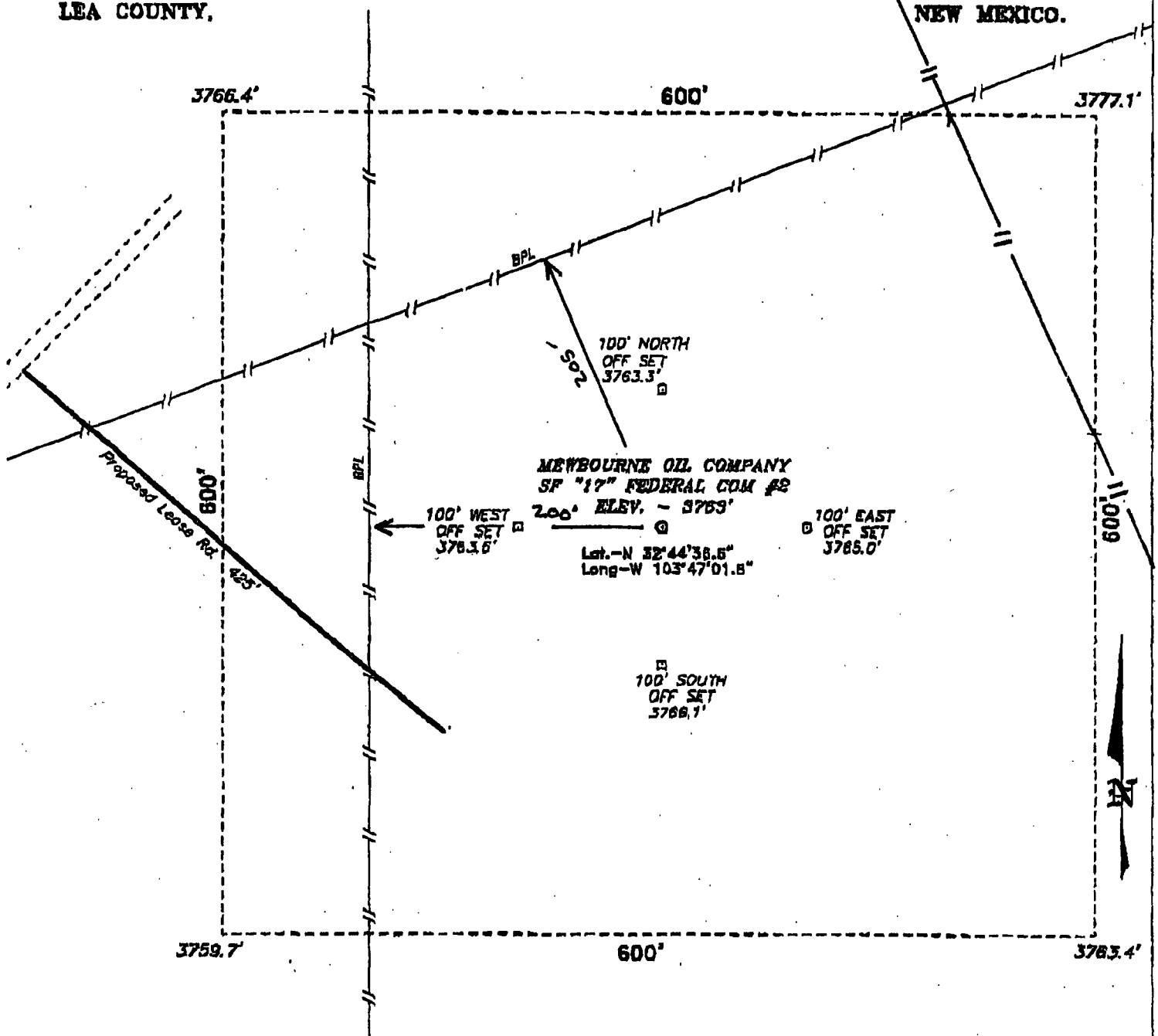


SECTION 17, TOWNSHIP 18 SOUTH, RANGE 32 EAST, N.M.P.M.,
LEA COUNTY, NEW MEXICO.



OIL CONSERVATION DIVISION

CASE NUMBER

EXHIBIT

7

100 0 100 200 FEET

SCALE: 1" = 100'

MEWBOURNE OIL COMPANY

REF: SF "17" FED. COM No. 2 / Well Pad Topo

THE SF "17" FED. COM No. 2 LOCATED 1910' FROM
THE SOUTH LINE AND 1370' FROM THE EAST LINE OF
SECTION 17, TOWNSHIP 18 SOUTH, RANGE 32 EAST,
N.M.P.M., LEA COUNTY, NEW MEXICO.

BASIN SURVEYS P.O. BOX 1788-HOBBS, NEW MEXICO

W.O. Number: 3333

Drawn By: K. GAD