

LEGEND
Shown
5000' or Discovered

CULBERSON, East

REE

DISTRICT I

1625 N. FRENCH DR., HOBBS, NM 88240

DISTRICT II

1301 W. GRAND AVENUE, ARTESIA, NM 88210

DISTRICT III

1000 Rio Brazos Rd., Aztec, NM 87410

DISTRICT IV

1220 S. ST. FRANCIS DR., SANTA FE, NM 87505

State of New Mexico

Energy, Minerals and Natural Resources Department

OIL CONSERVATION DIVISION

1220 SOUTH ST. FRANCIS DR.
Santa Fe, New Mexico 87505

Form C-102

Revised October 12, 2005

Submit to Appropriate District Office

State Lease - 4 Copies

Fee Lease - 3 Copies

WELL LOCATION AND ACREAGE DEDICATION PLAT

☐ AMENDED REPORT

API Number	Pool Code 16800	Pool Name DELAWARE RIVER-BONE SPRING
Property Code	Property Name COPPERHEAD "31" FEDERAL COM	Well Number 1H
OGRID No. 217955	Operator Name OGX RESOURCES	Elevation 2895'

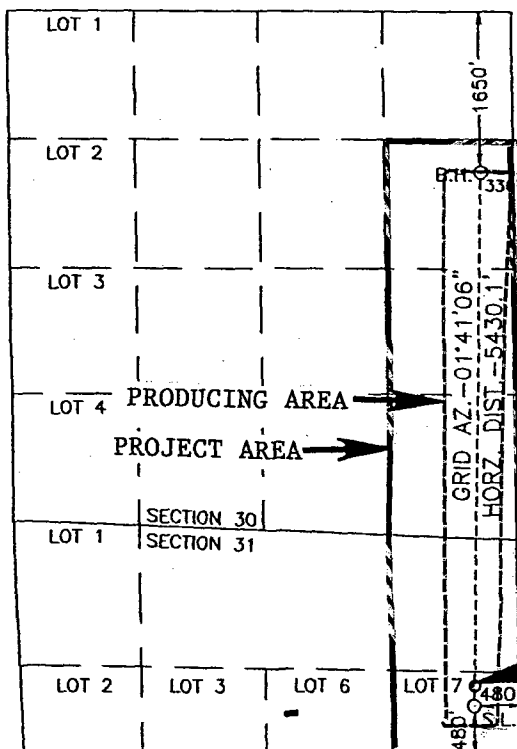
Surface Location

UL or lot No.	Section	Township	Range	Lot Idn	Feet from the	North/South line	Feet from the	East/West line	County
H	31	26-S	29-E		480	SOUTH	480	EAST	EDDY

Bottom Hole Location If Different From Surface

UL or lot No.	Section	Township	Range	Lot Idn	Feet from the	North/South line	Feet from the	East/West line	County
7	30	26-S	29-E		1650	NORTH	330	EAST	EDDY
Dedicated Acres 189.5	Joint or Infill	Consolidation Code	Order No.						

NO ALLOWABLE WILL BE ASSIGNED TO THIS COMPLETION UNTIL ALL INTERESTS HAVE BEEN CONSOLIDATED
OR A NON-STANDARD UNIT HAS BEEN APPROVED BY THE DIVISION



GEODETTIC COORDINATES

NAD 27 NME

SURFACE LOCATION

Y=364339.9 N

X=598251.9 E

LAT.=32.001288° N
LONG.=104.016382° W

BOTTOM HOLE LOCATION

Y=369766.3 N

X=598411.7 E

POE
680' FSL & 474' FEL

SCALE-1"=2000'

EXHIBIT "A"

OPERATOR CERTIFICATION

I hereby certify that the information herein is true and complete to the best of my knowledge and belief, and that this organization either owns a working interest or unleased mineral interest in the land including the proposed bottom hole location or has a right to drill this well at this location pursuant to a contract with an owner of such mineral or working interest, or to a voluntary pooling agreement or a compulsory pooling order heretofore entered by the division.

Signature

Date

Joe T. Janica 09/24/10

Printed Name

SURVEYOR CERTIFICATION

I hereby certify that the well location shown on this plat was plotted from field notes of actual surveys made by me or under my supervision, and that the same is true and correct to the best of my belief.

Date Surveyed

Signature & Seal of
Professional Surveyor

Ronald J. Eidson

August 24, 2010

August 24, 2010

August 24, 2010

August 24, 2010

August 24, 2010

August 24, 2010

August 24, 2010

August 24, 2010

August 24, 2010

August 24, 2010

August 24, 2010

Certificate No. GARY EIDSON

12641

RONALD J. EIDSON 3239