

COMPANY: Meridian Oil, Inc.
 WELL: Allison Unit POW #2
 FIELD: Basin Fruitland Coal
 COUNTY: San Juan STATE: New Mexico

COMPENSATED NEUTRON
 LITHO-DENSITY LOG

Schlumberger

LOCATION: 1775th St 600' N
 Fruitland Coal
 Allison Unit POW #2

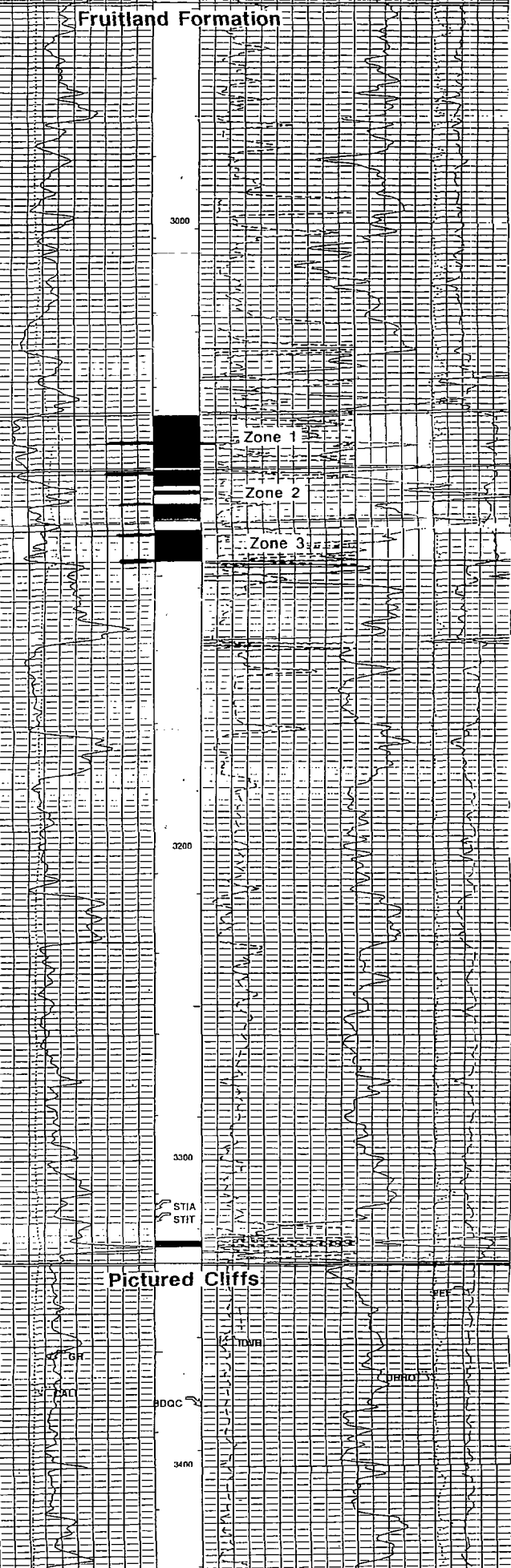
Company: Meridian Oil, Inc.

Well Name: Allison Unit POW #2
 Location: 1775th St 600' N
 Well: Allison Unit POW #2

Log Number: 01
 Run Date: NOV 22 1983

Formation: Fruitland Coal
 Log Type: Litho-Density
 Log Depth: 0 to 3400 ft

Log Number	Run Date	Formation	Log Type	Log Depth
01	NOV 22 1983	Fruitland Coal	Litho-Density	0 to 3400 ft



Curve Name	Scale	Units
Capillary (CAL)	6.0	(ft)
Gamma Ray (GR)	0.0 to 200.0	(API)
Cable Drag	0.0	From STIA
Deep Induction Very Enhanced Resolution Phasor Resistivity (DVR)	0.0	(OHMM)
Bulk Density Correction (RHO)	0.25	(G/CC)
Bulk Density (RHO)	3.0	(G/CC)
Gamma Ray (GR)	0.0	(API)
Stuck Stick (STIT)	0.0	(ft)
Area BOD C	0.0	From BDOC to D31
Bulk Density Quality Curve (BDOC)	10.0	(G/CC)
PhotoElectric Factor (PEF)	0.0	(-)