

MERIDIAN OIL

CANYON LARGO UNIT #388
HORIZONTAL POINT LOOKOUT WELL
Rio Arriba Co., New Mexico

AREA 3 TEAM
DVG: C. GROTH
3/29/93

EAS

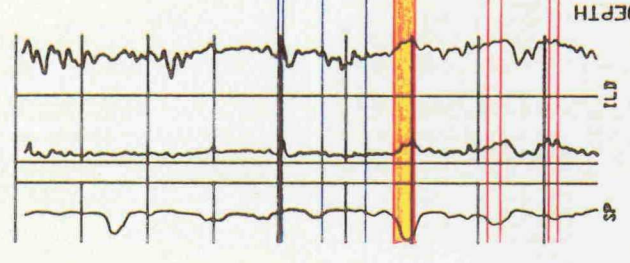
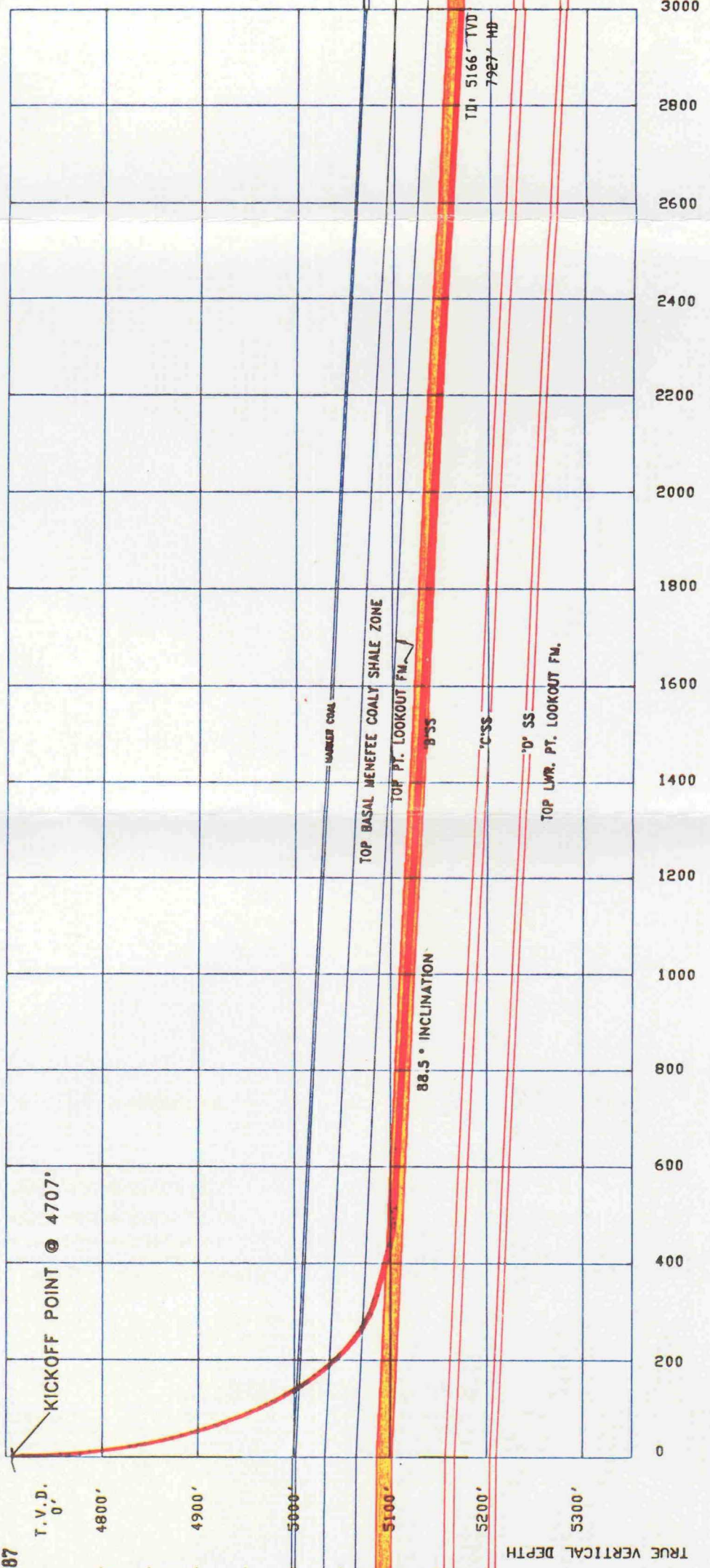
WEST

CANYON LARGO UNIT #287
SW 3, T25N-R6W
Rio Arriba Co., N.M.

KICKOFF POINT @ 4707'

[65' dip (1.1') over 3000 ft. vertical section]

CANYON LARGO UNIT #287
SW 3, T25N-R6W
Rio Arriba Co., N.M.



TRUE VERTICAL DEPTH
4800'
4900'
5000'
5100'
5200'
5300'

VERTICAL SECTION
0
200
400
600
800
1000
1200
1400
1600
1800
2000
2200
2400
2600
2800
3000

SP

ILD

GR

CR

10X 5d

TD: 5166' TVD
7927' HD