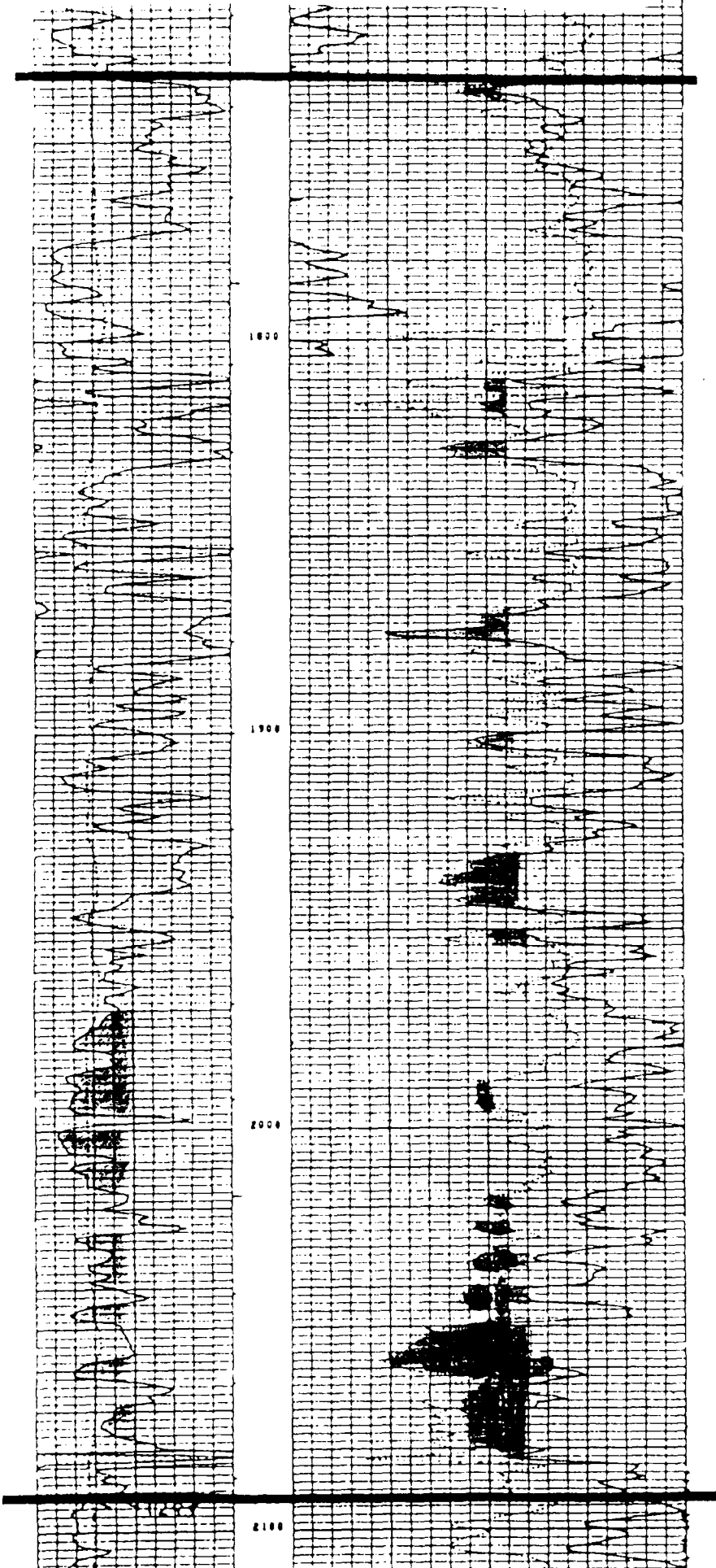


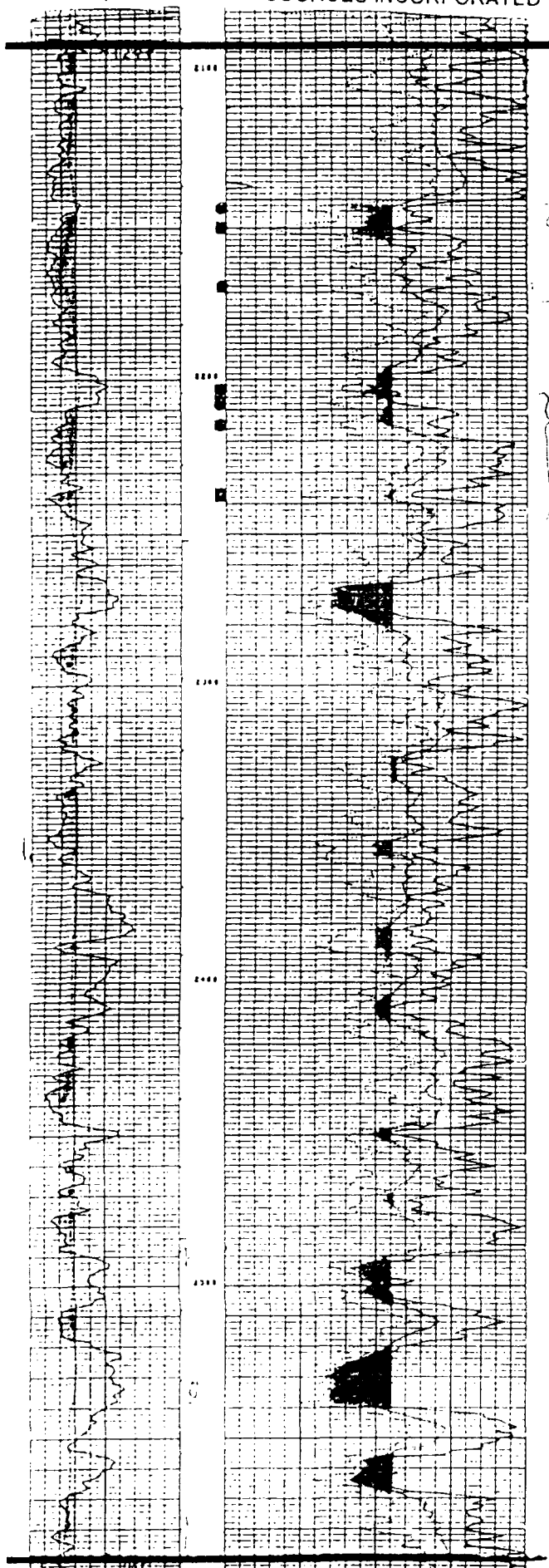
Field: MILLMAN EAST

Lease: CONOCO 7 STATE | Well Number: 3
Operator: SDX RESOURCES INCORPORATED



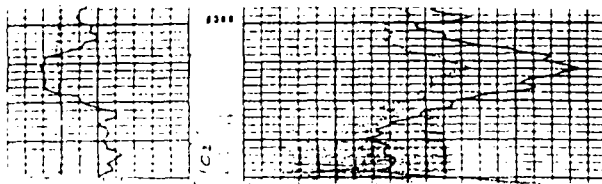
Field: MILLMAN EAST
 Lease: CONOCO 7 STATE | Well Number: 3
 Operator: SDX RESOURCES INCORPORATED

AP 35 E 1
 STATE W.



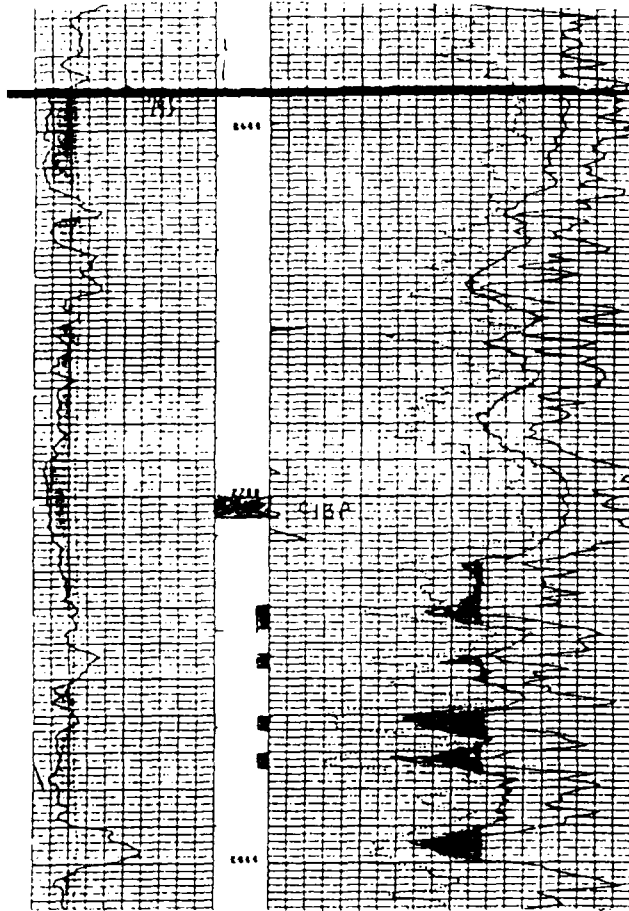
5 1/2" x 7"
 Perm. 100% oil
 A/Sand 30% oil
 Sum. 14 sec. gals
 30 min. @ 1000

5 1/2" x 7"
 Perm. 100% oil
 A/Sand 30% oil
 Sum. 14 sec. gals
 30 min. @ 1000



Field: MILLMAN EAST

Lease: CONOCO 7 STATE | Well Number: 3
 Operator: SDX RESOURCES INCORPORATED



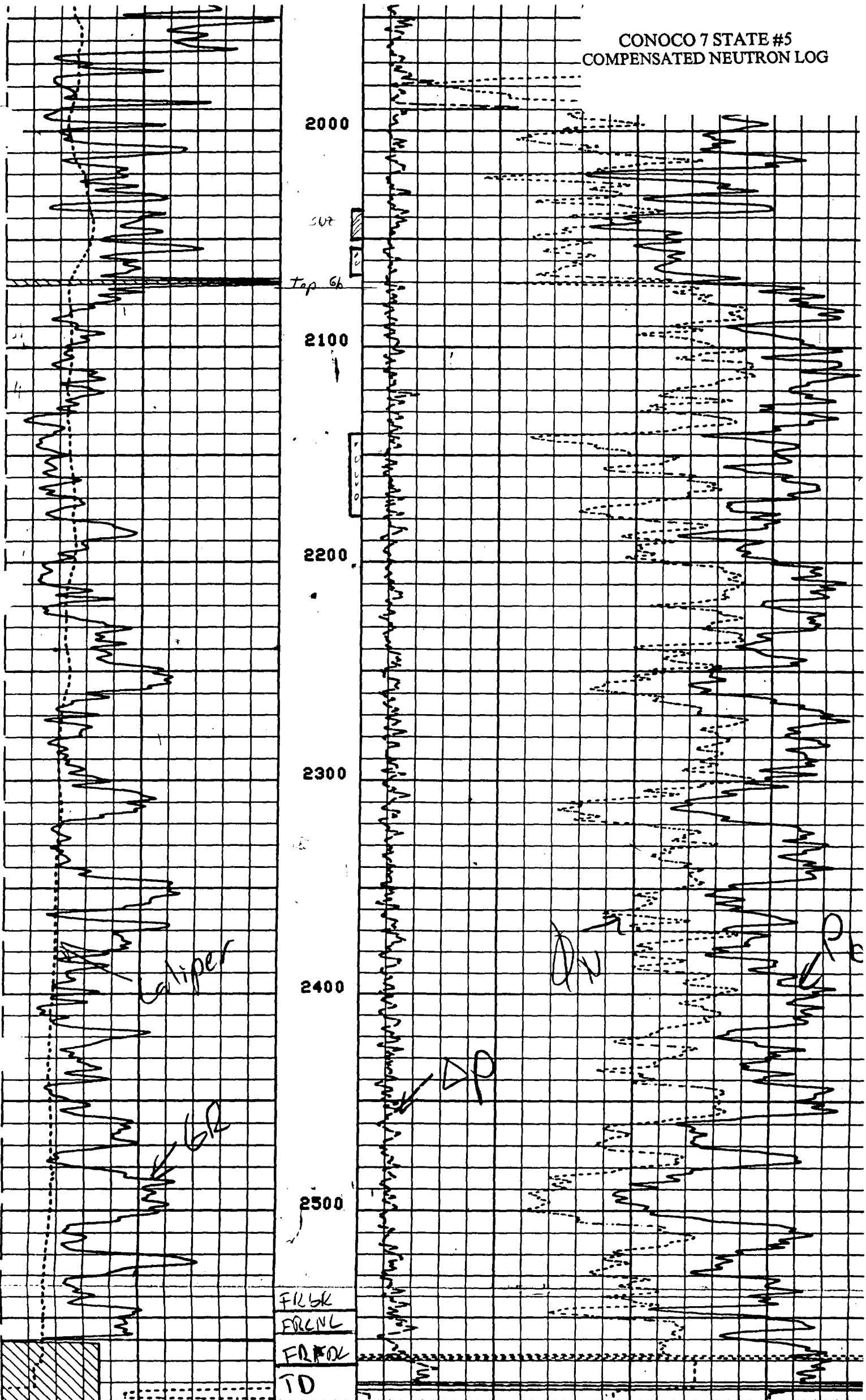
KB = 3387

SAN ANDRES 2590 (4771)

5-718 sub CIBPC@ 2700

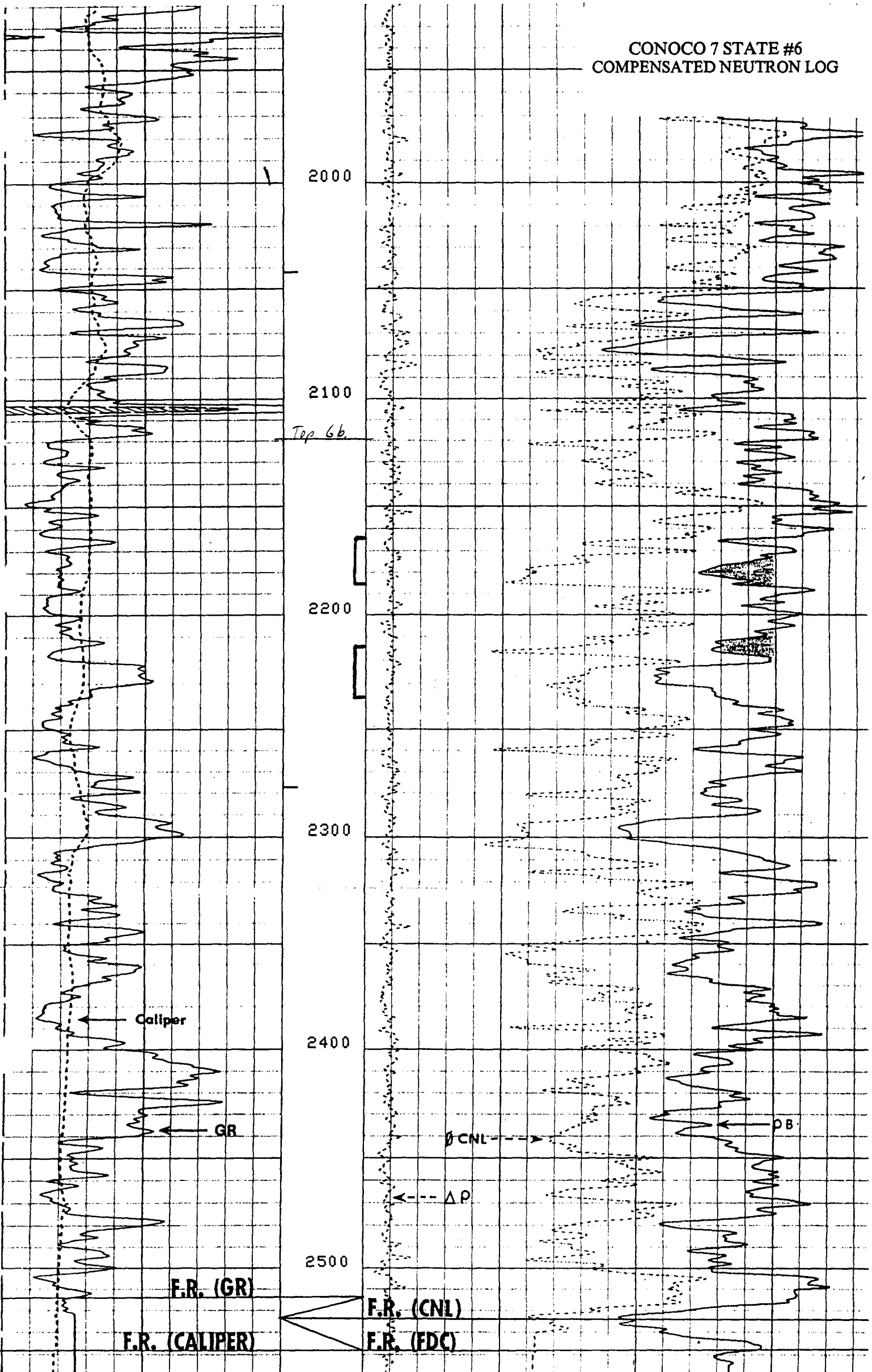
5-8-81
 Perf 2730-74
 A/2000 gals
 swab 5% oil

CONOCO 7 STATE #5
COMPENSATED NEUTRON LOG



Correlation Log

CONOCO 7 STATE #6
COMPENSATED NEUTRON LOG



FILE

4

GR (GAPI) 100.0 200.0

DRHO (G/C3) -0.050 0.4500

CONOCO 7 STATE #7
COMPENSATED NEUTRON LOG

1900

2000

2100

2200

2300

2400

2500

Top Gb

