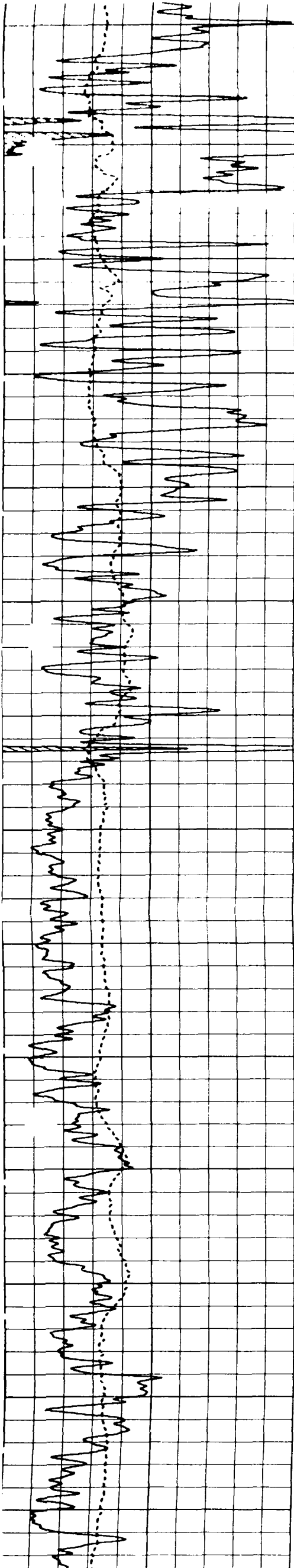
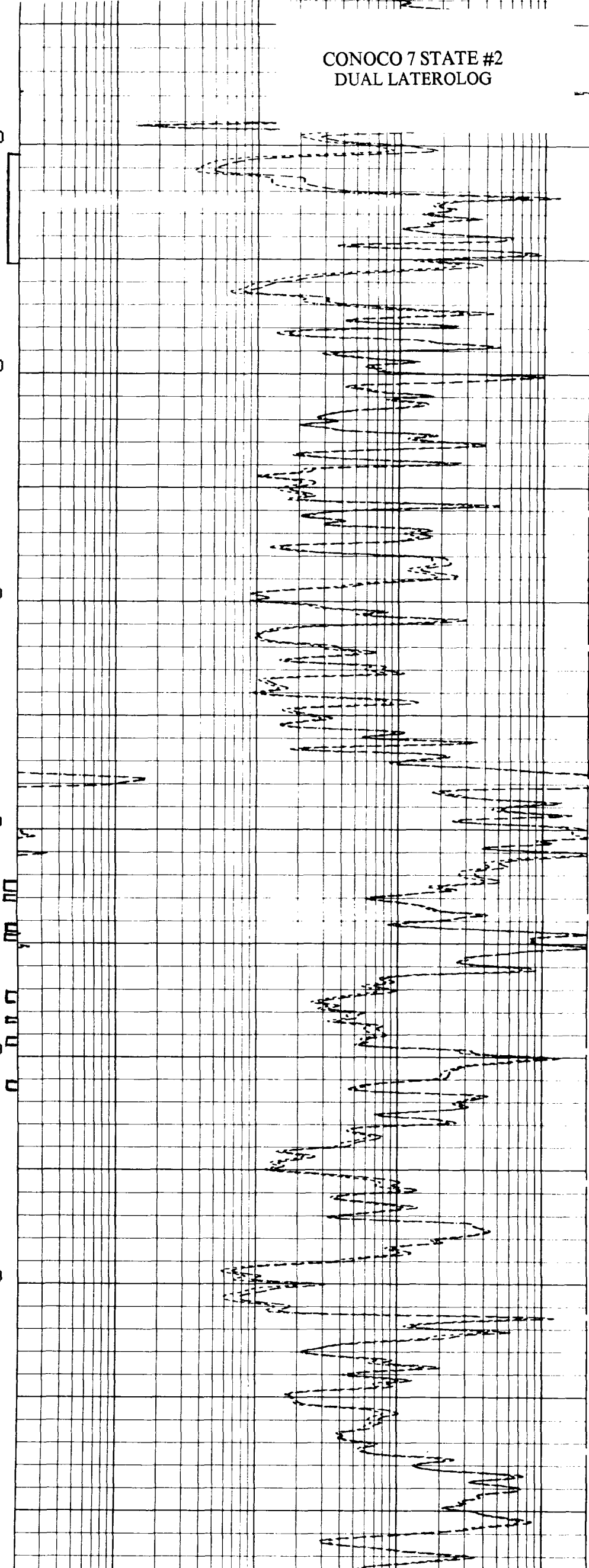


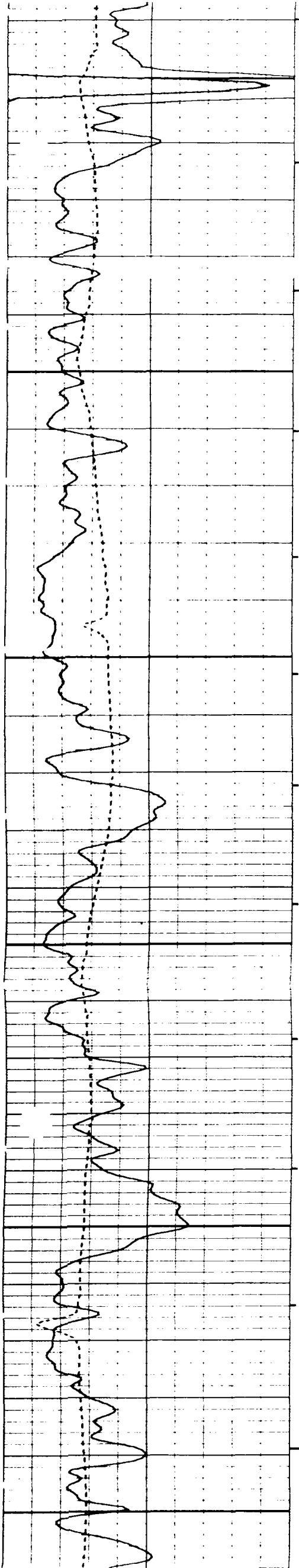
CONOCO 7 STATE #2  
DUAL LATEROLOG



1800  
1900  
2000  
2100  
2200  
2300  
2400



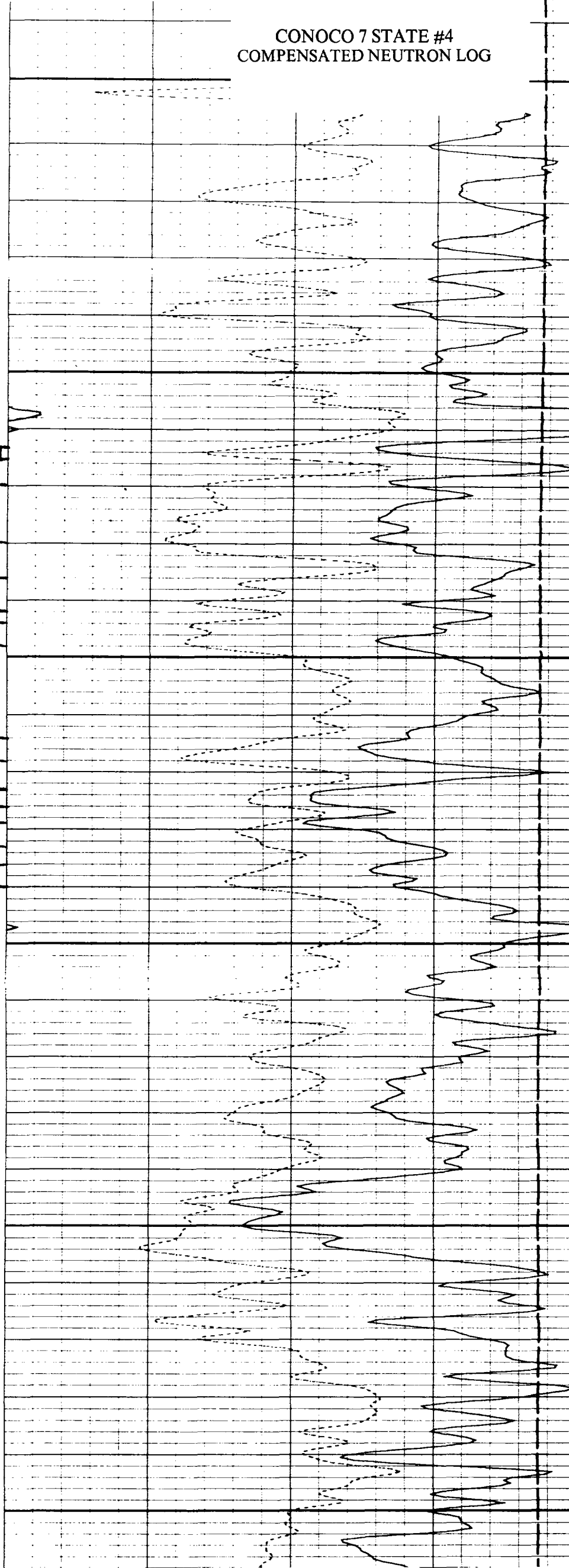
CONOCO 7 STATE #4  
COMPENSATED NEUTRON LOG



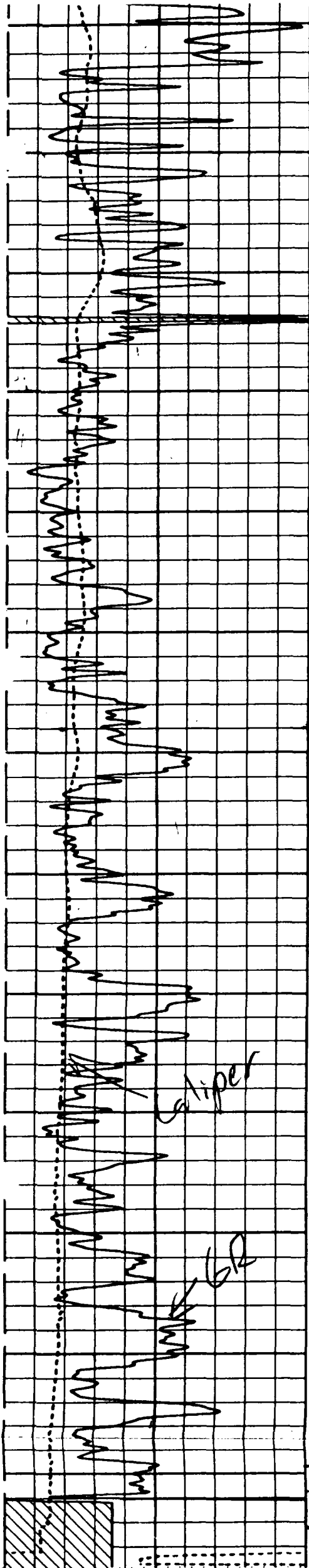
2100

2200

2300



CONOCO 7 STATE #5  
COMPENSATED NEUTRON LOG



2000

2100

2200

2300

2400

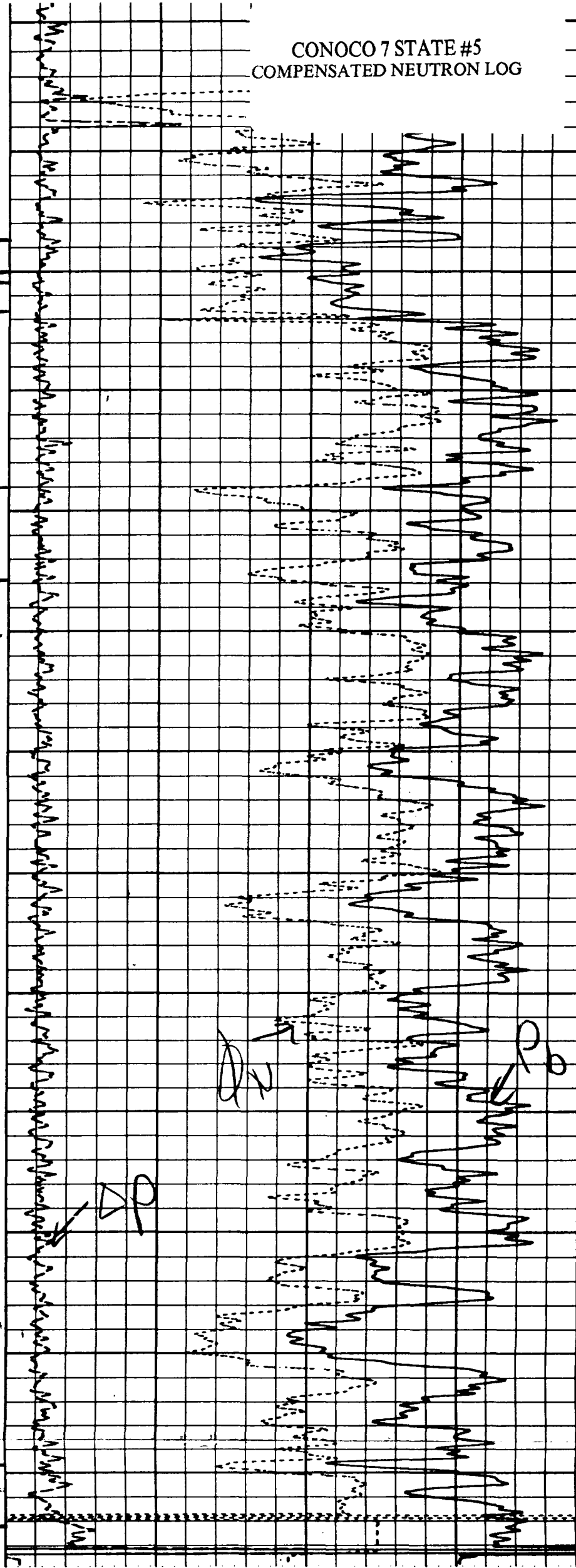
2500

*sliper*

*GR*



FILE  
FREN  
FR  
TD  
FILE

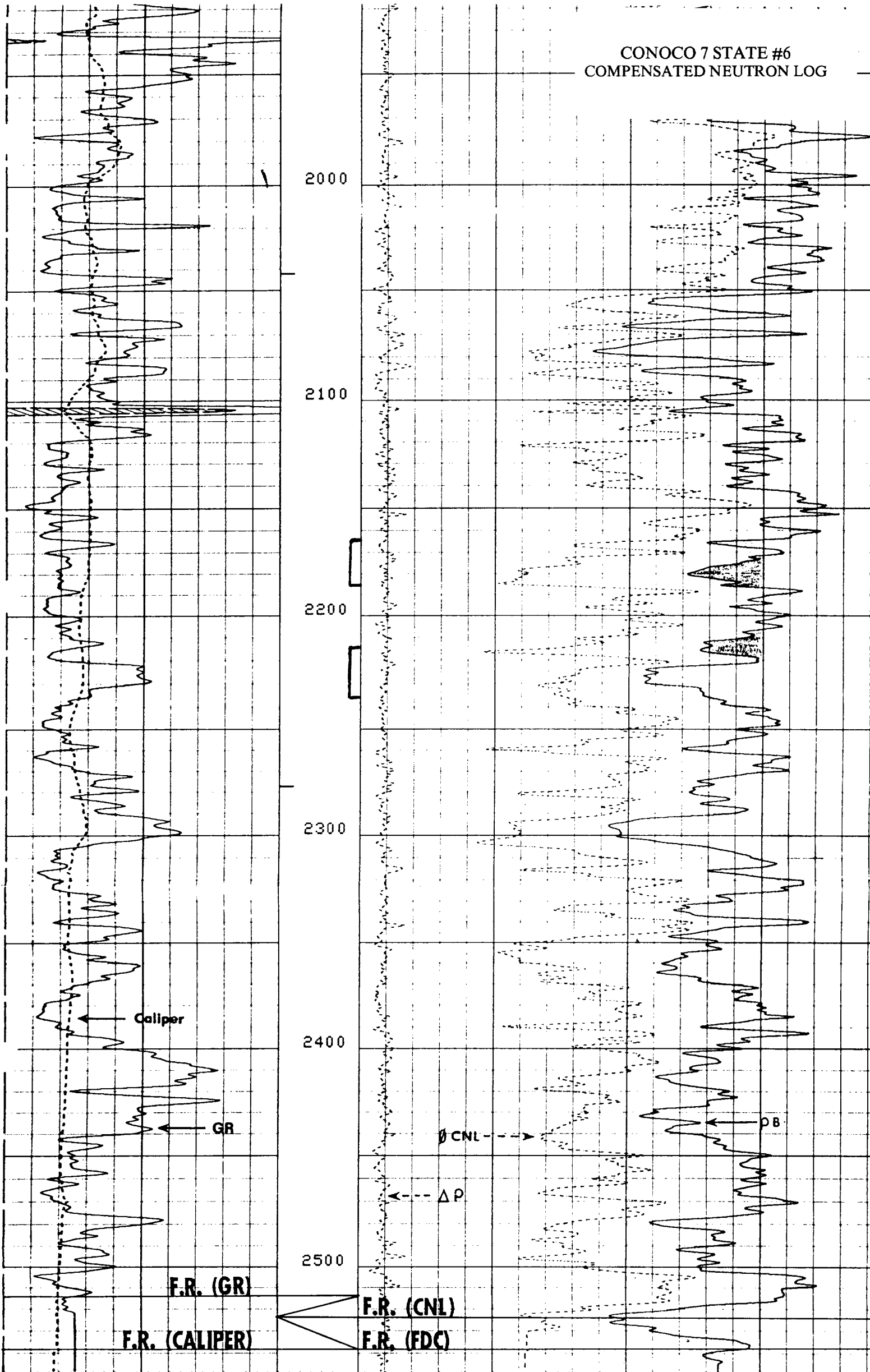


*DN*

*DP*

Correlation Log

CONOCO 7 STATE #6  
COMPENSATED NEUTRON LOG



2000

2100

2200

2300

2400

2500

Caliper

GR

F.R. (GR)

F.R. (CALIPER)

Ø CNL

ΔP

DB

F.R. (CNL)

F.R. (FDC)

FILE

4

GR (GAPI)

DRHO (G/C3)

100.0

200.0

-0.050

0.4500

CONOCO 7 STATE #7  
COMPENSATED NEUTRON LOG

1900

2000

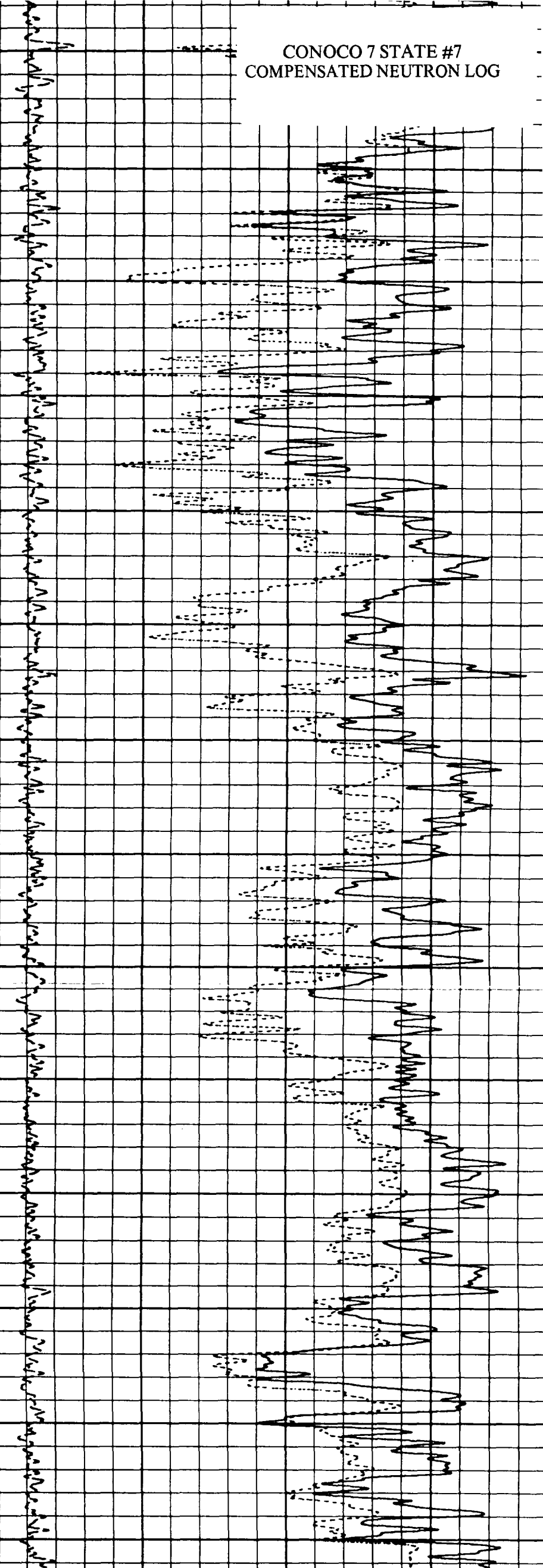
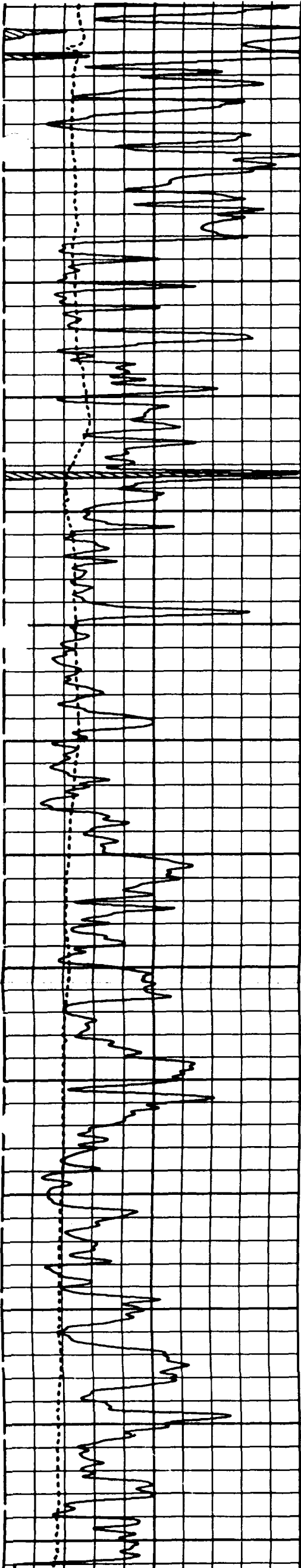
2100

2200

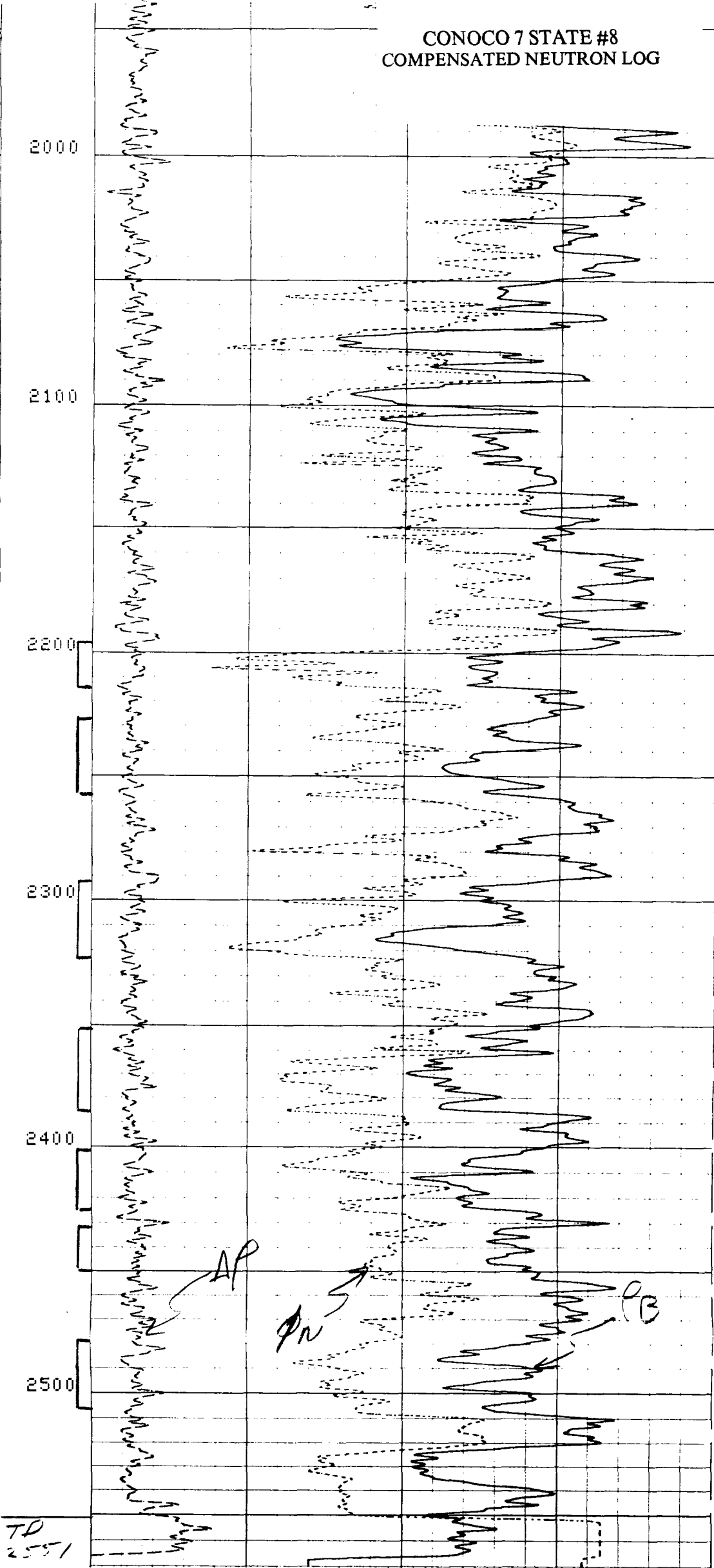
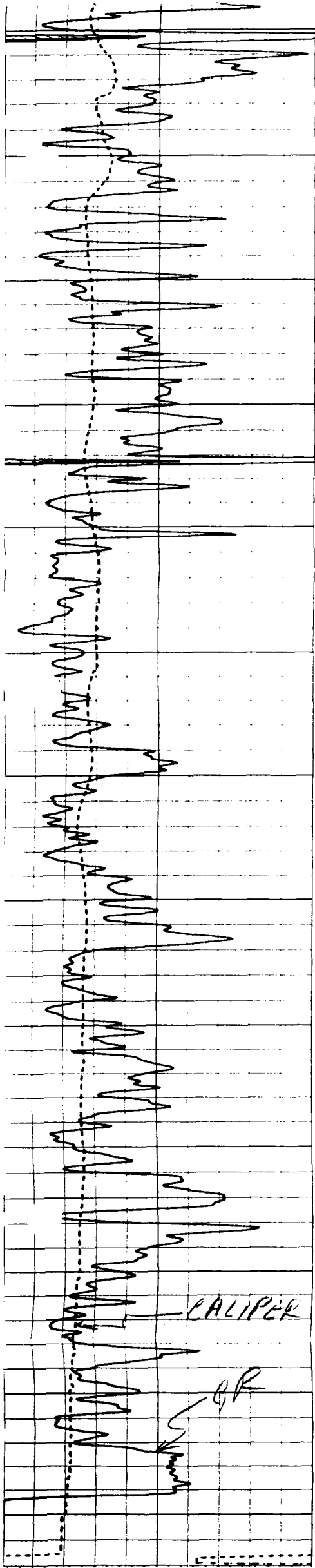
2300

2400

2500



CONOCO 7 STATE #8  
COMPENSATED NEUTRON LOG



TD  
2551

FILE

3

GR (GAPI)  
100.0 200.0

DRHO (G/CC)  
-0.050 0.4500

CONOCO 7 STATE #9  
COMPENSATED NEUTRON LOG

1900

2000

T/Penrose

2100

T/Grayburg

T/Loco Hills

2200

B/Loco Hills

2300  
T/M. Metex

B/M. Metex

2400

T/L. Metex

Neutron

Compensated  
Porosity

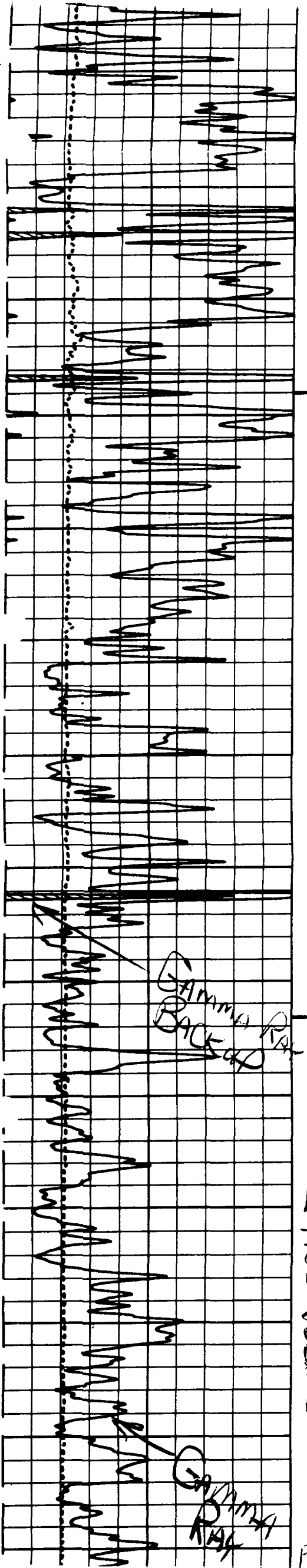
R.D. 2452  
T.D. 2454

RATIO SCALE

LIMESTONE POROSITY

30 20 10 0

CONOCO 7 STATE #11  
COMPENSATED NEUTRON LOG



1800

1900

2000

2100

2200

2300

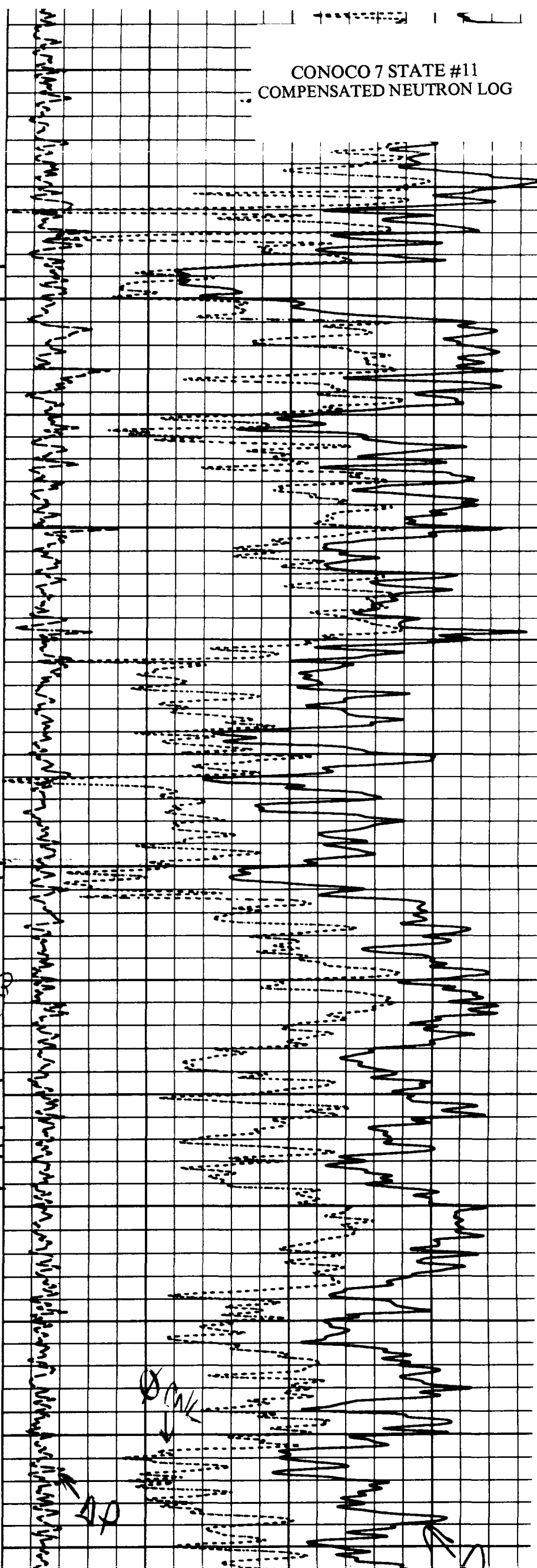
2400

INTEGRATED  
HOLE VOLUME

F.R. GR

GAMMA  
BACK  
COR

GAMMA  
COR



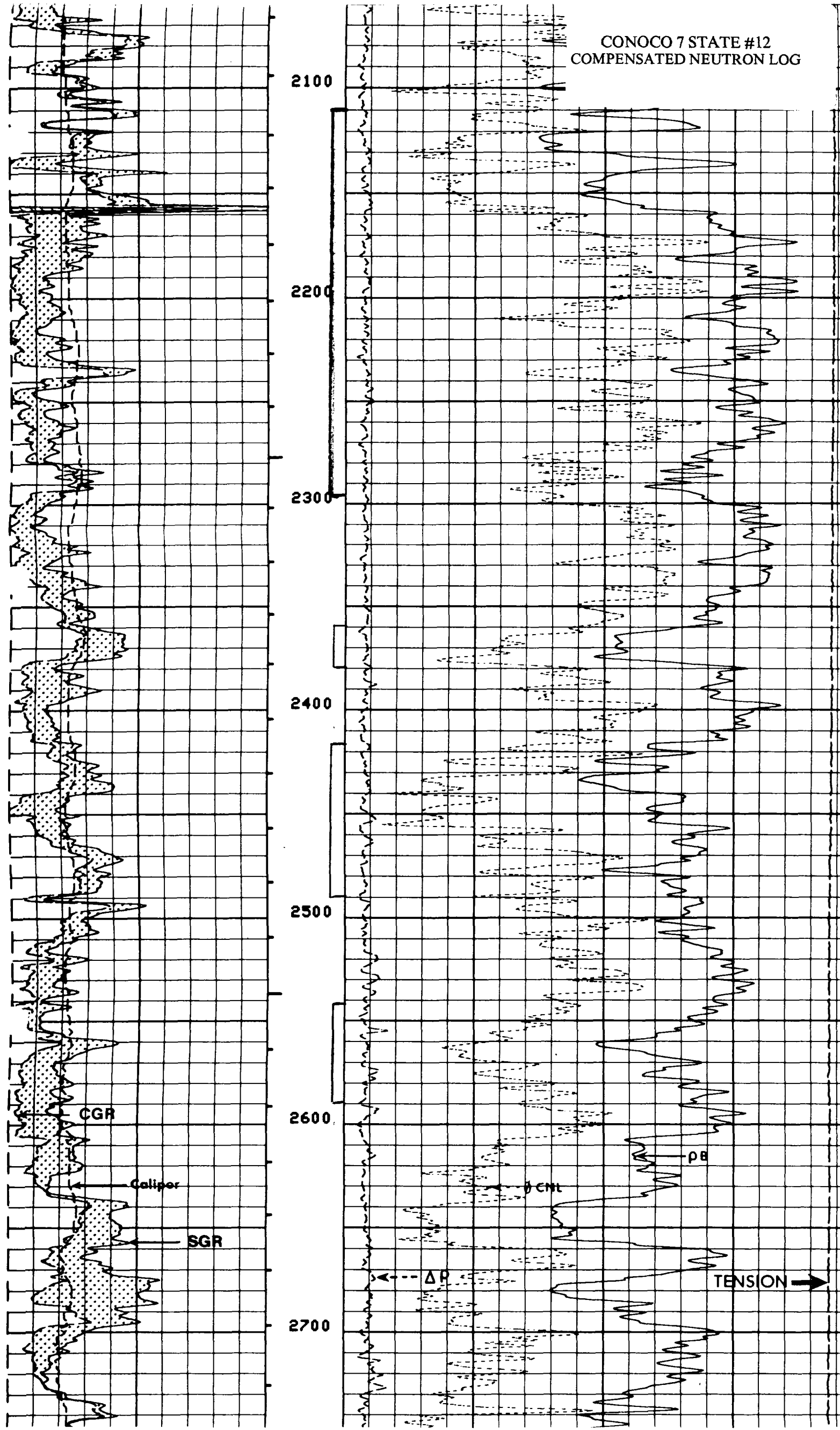
DN

DN

DN



CONOCO 7 STATE #12  
COMPENSATED NEUTRON LOG



2100

2200

2300

2400

2500

2600

2700

CGR

Caliper

SGR

DB

DNL

$\Delta P$

TENSION

CONOCO 7 STATE #13  
DUAL LATEROLOG

