

*Little to no water current prod.*

Date: 07/17/95  
Time: 17:53:21

# PRODUCTION HISTORY

File: HEYCO.DSF  
Get#: 0

ATLANTIC 32 ST #1 057300-001  
BUFFALO QUEEN  
LEA COUNTY, NM  
HEYCO  
HEYCO

CASE:  
OIL = SOLID GAS = DASH WATER = DASHDOT GOR = LONGDASH

10000  
1000

YCO LF

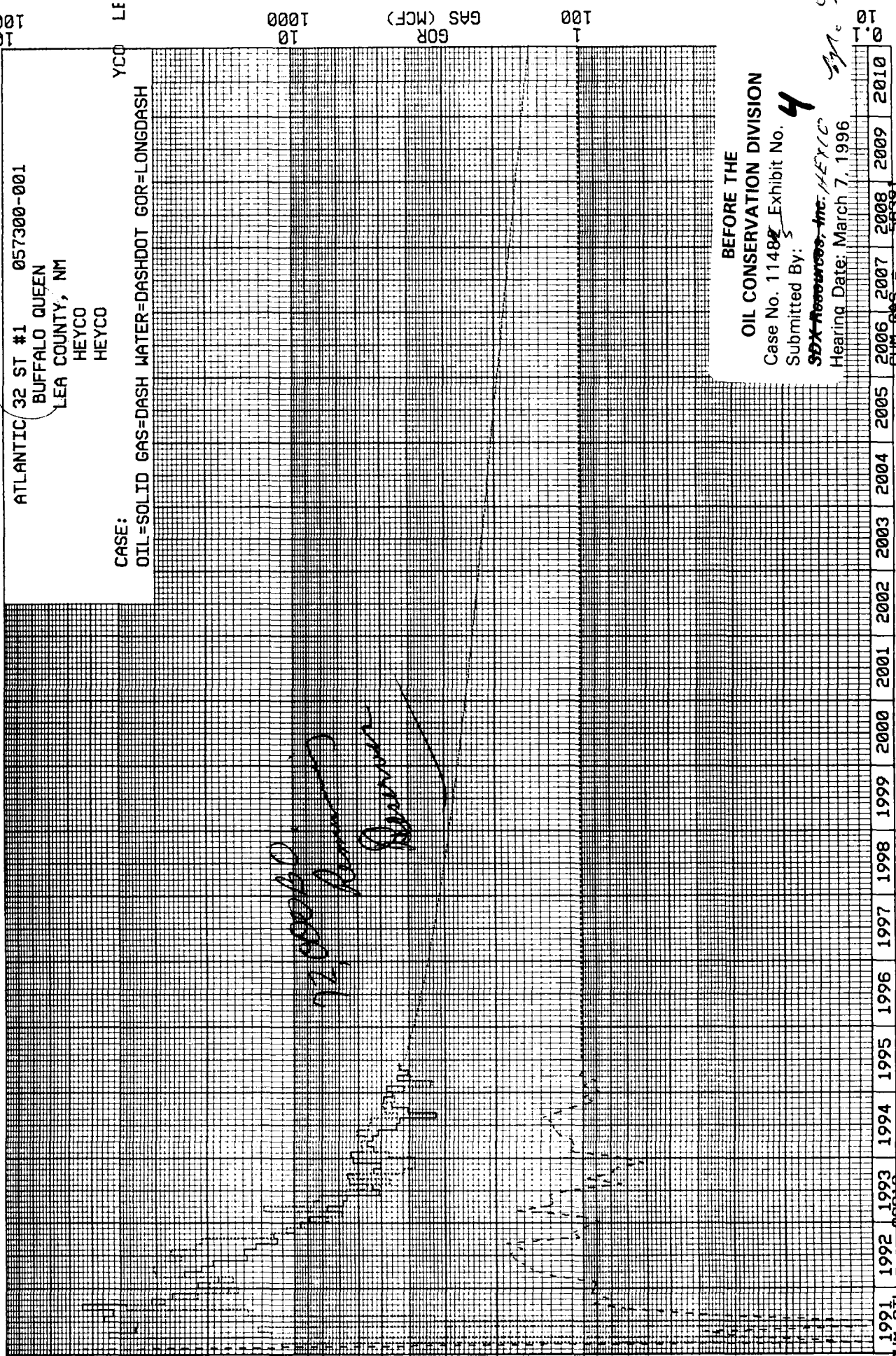
1000  
10

GOR  
GAS (MCF)  
1000  
10

10000  
1000

1000  
10

OIL (BBL)  
100  
10



BEFORE THE  
OIL CONSERVATION DIVISION  
Case No. 11484 Exhibit No. 4  
Submitted By: SDX Resources, Inc. HEYCO  
Hearing Date: March 7, 1996

YEAR	1991	1992	1993	1994	1995	1996	1997	1998	1999	2000	2001	2002	2003	2004	2005	2006	2007	2008	2009	2010	
CUM OIL			66618																		
REM OIL			72439																		
CUM GAS																					
REM GAS																					

RESERVES AND ECONOMICS

(CO

AS OF JULY 1, 1995

-END- MO-YR	---GROSS PRODUCTION---		----NET PRODUCTION----		--PRICES--		-----OPERATIONS, M\$-----			CAPITAL COSTS, M\$	CASH FLOW BTAX, M\$	10.00 PCT CUM. DISC BTAX, M\$
	OIL, MMBL	GAS, MMCF	OIL, MMBL	GAS, MMCF	OIL \$/B	GAS \$/M	NET OPER REVENUES	SEV+ADV TAXES	NET OPER EXPENSES			
12-95	2.373	2.373	1.534	1.534	17.50	1.65	29.376	3.510	8.370	.000	17.496	17.084
12-96	4.317	4.317	2.791	2.791	17.50	1.80	53.867	6.441	16.740	.000	30.686	44.980
12-97	3.880	3.880	2.509	2.509	18.50	1.95	51.310	6.136	17.242	.000	27.932	68.064
12-98	3.552	3.552	2.297	2.297	19.50	2.01	49.406	5.908	17.759	.000	25.739	87.402
12-99	3.294	3.294	2.130	2.130	20.09	2.07	47.187	5.642	18.292	.000	23.253	103.284
12- 0	3.083	3.083	1.994	1.994	20.69	2.13	45.500	5.441	18.841	.000	21.218	116.459
12- 1	2.907	2.907	1.880	1.880	21.31	2.19	44.185	5.283	19.406	.000	19.496	127.464
12- 2	2.756	2.756	1.782	1.782	21.95	2.26	43.138	5.159	19.988	.000	17.991	136.696
12- 3	2.619	2.619	1.694	1.694	22.61	2.33	42.238	5.051	20.588	.000	16.599	144.440
12- 4	2.488	2.488	1.609	1.609	23.28	2.40	41.323	4.941	21.206	.000	15.176	150.876
12- 5	2.364	2.364	1.529	1.529	23.98	2.47	40.446	4.836	21.842	.000	13.768	156.184
12- 6	2.245	2.245	1.452	1.452	24.70	2.54	39.561	4.730	22.497	.000	12.334	160.507
12- 7	2.133	2.133	1.379	1.379	25.44	2.62	38.700	4.628	23.172	.000	10.900	163.980
12- 8	2.027	2.027	1.311	1.311	26.21	2.70	37.896	4.531	23.867	.000	9.498	166.731
12- 9	1.925	1.925	1.245	1.245	26.99	2.78	37.067	4.432	24.583	.000	8.052	168.851
12-10	1.829	1.829	1.183	1.183	27.80	2.86	36.278	4.338	25.321	.000	6.619	170.436
S TOT	43.792	43.792	28.319	28.319	21.69	2.23	677.478	81.007	319.714	.000	276.757	170.436
REM.	4.955	4.955	3.204	3.204	29.35	3.04	103.778	12.409	80.612	.000	10.757	172.632
TOTAL	48.747	48.747	31.523	31.523	22.47	2.31	781.256	93.416	400.326	.000	287.514	172.632
M.	.000	.000					NET OIL REVENUES (M\$)	708.382		-----PRESENT WORTH PROFILE-----		
ULT.	48.747	48.747					NET GAS REVENUES (M\$)	72.874	DISC	PW OF NET	DISC	PW OF NET
							TOTAL REVENUES (M\$)	781.256	RATE	BTAX, M\$	RATE	BTAX, M\$
BTAX RATE OF RETURN (PCT)			100.00	PROJECT LIFE (YEARS)				19.000	.0	287.514	30.0	95.403
BTAX PAYOUT YEARS			.50	DISCOUNT RATE (PCT)				10.000	2.0	255.035	35.0	86.324
BTAX PAYOUT YEARS (DISC)			.50	GROSS OIL WELLS				1.000	5.0	216.971	40.0	79.036
BTAX NET INCOME/INVEST			.00	GROSS GAS WELLS				.000	8.0	188.128	45.0	73.058
BTAX NET INCOME/INVEST (DISC)			.00	GROSS WELLS				1.000	10.0	172.632	50.0	68.072
									12.0	159.441	60.0	60.217
INITIAL W.I. FRACTION			.862171	INITIAL NET OIL FRACTION				.646628	15.0	143.033	70.0	54.308
FINAL W.I. FRACTION			.862171	FINAL NET OIL FRACTION				.646628	18.0	129.754	80.0	49.695
PRODUCTION START DATE			7- 1-95	INITIAL NET GAS FRACTION				.646628	20.0	122.242	90.0	45.985
MONTHS IN FIRST LINE			12.00	FINAL NET GAS FRACTION				.646628	25.0	106.990	100.0	42.935

BEFORE THE  
 OIL CONSERVATION DIVISION  
 Case No. 11485 Exhibit No. 5  
 Submitted By:  
 HEYCO  
 Hearing Date: March 7, 1996

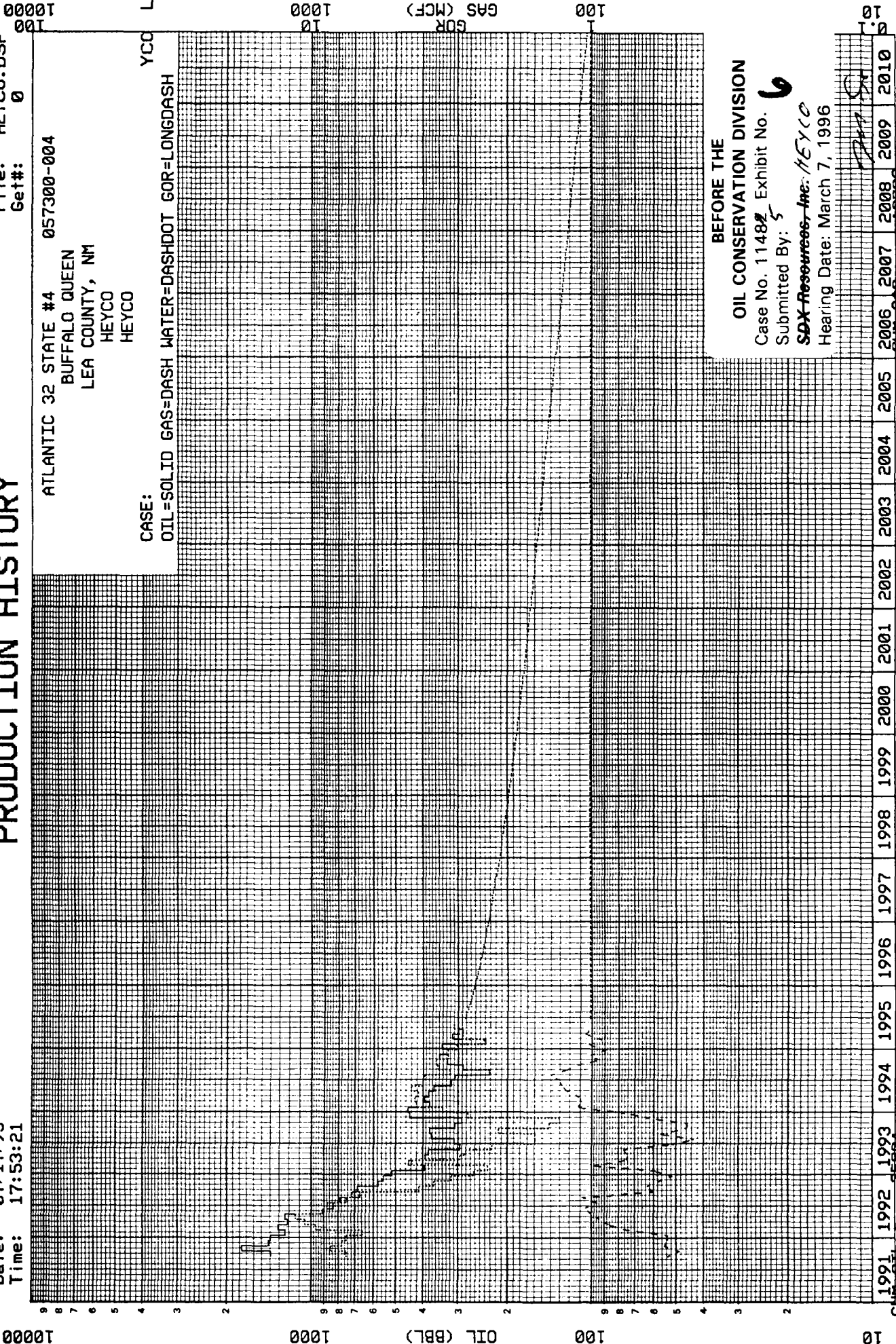
# PRODUCTION HISTORY

Date: 07/17/95  
Time: 17:53:21

File: HEYCO.DSF  
Get#: 0

ATLANTIC 32 STATE #4 057300-004  
BUFFALO QUEEN  
LEA COUNTY, NM  
HEYCO  
HEYCO

CASE:  
OIL=SOLID GAS=DASH WATER=DASHDOT GOR=LONGDASH



Year	Oil (BBL)	Gas (MCF)
1991	0	0
1992	100	0
1993	200	0
1994	400	0
1995	600	0
1996	500	0
1997	100	100
1998	50	200
1999	20	100
2000	10	50
2001	5	25
2002	2	10
2003	1	5
2004	0.5	2.5
2005	0.2	1.2
2006	0.1	0.5
2007	0.05	0.2
2008	0.02	0.1
2009	0.01	0.05
2010	0.005	0.02
<b>Cum Oil</b>	<b>55004</b>	
<b>Rem Gas</b>		<b>36453</b>

BEFORE THE  
OIL CONSERVATION DIVISION  
Case No. 11482 Exhibit No. 6  
Submitted By: HEYCO  
*SAX Resources, Inc.*  
Hearing Date: March 7, 1996

RESERVES AND ECONOMICS

CO

AS OF JULY 1, 1995

-END- MO-YR	---GROSS PRODUCTION---		----NET PRODUCTION----		--PRICES--		-----OPERATIONS, M\$-----			CAPITAL COSTS, M\$	CASH FLOW BTAX, M\$	10.00 PCT CUM. DISC BTAX, M\$
	OIL, MMBL	GAS, MCMF	OIL, MMBL	GAS, MCMF	OIL \$/B	GAS \$/M	NET OPER REVENUES	SEV+ADV TAXES	NET OPER EXPENSES			
12-95	1.621	1.621	1.050	1.050	17.50	1.65	20.108	2.403	5.077	.000	12.628	12.331
12-96	2.953	2.953	1.912	1.912	17.50	1.80	36.902	4.412	10.154	.000	22.336	32.636
12-97	2.662	2.662	1.724	1.724	18.50	1.95	35.256	4.216	10.459	.000	20.581	49.645
12-98	2.447	2.447	1.585	1.585	19.50	2.01	34.091	4.077	10.772	.000	19.242	64.102
-99	2.277	2.277	1.475	1.475	20.09	2.07	32.676	3.908	11.096	.000	17.672	76.172
12- 0	2.139	2.139	1.385	1.385	20.69	2.13	31.603	3.780	11.428	.000	16.395	86.352
12- 1	2.024	2.024	1.311	1.311	21.31	2.19	30.812	3.685	11.771	.000	15.356	95.020
12- 2	1.923	1.923	1.245	1.245	21.95	2.26	30.139	3.603	12.124	.000	14.412	102.416
12- 3	1.826	1.826	1.182	1.182	22.61	2.33	29.472	3.523	12.488	.000	13.461	108.696
12- 4	1.735	1.735	1.124	1.124	23.28	2.40	28.867	3.452	12.863	.000	12.552	114.019
12- 5	1.648	1.648	1.067	1.067	23.98	2.47	28.225	3.375	13.249	.000	11.601	118.492
12- 6	1.566	1.566	1.014	1.014	24.70	2.54	27.628	3.304	13.646	.000	10.678	122.235
12- 7	1.488	1.488	.964	.964	25.44	2.62	27.053	3.235	14.056	.000	9.762	125.345
12- 8	1.413	1.413	.915	.915	26.21	2.70	26.449	3.163	14.477	.000	8.809	127.897
12- 9	1.343	1.343	.870	.870	26.99	2.78	25.903	3.097	14.912	.000	7.894	129.976
12-10	1.275	1.275	.826	.826	27.80	2.86	25.330	3.028	15.359	.000	6.943	131.638
S TOT	30.340	30.340	19.649	19.649	21.71	2.23	470.514	56.261	193.931	.000	220.322	131.638
REM.	5.482	5.482	3.549	3.549	29.59	3.12	116.104	13.885	83.989	.000	18.230	135.167
TOTAL	35.822	35.822	23.198	23.198	22.92	2.37	586.618	70.146	277.920	.000	238.552	135.167
1.	.000	.000					NET OIL REVENUES (M\$)	531.681		-----PRESENT WORTH PROFILE-----		
ULT.	35.822	35.822					NET GAS REVENUES (M\$)	54.937	DISC	PW OF NET	DISC	PW OF NET
							TOTAL REVENUES (M\$)	586.618	RATE	BTAX, M\$	RATE	BTAX, M\$
BTAX RATE OF RETURN (PCT)			100.00	PROJECT LIFE (YEARS)				21.000	.0	238.552	30.0	71.546
BTAX PAYOUT YEARS			.50	DISCOUNT RATE (PCT)				10.000	2.0	208.429	35.0	64.430
BTAX PAYOUT YEARS (DISC)			.50	GROSS OIL WELLS				1.000	5.0	173.977	40.0	58.773
BTAX NET INCOME/INVEST			.00	GROSS GAS WELLS				.000	8.0	148.556	45.0	54.168
BTAX NET INCOME/INVEST (DISC)			.00	GROSS WELLS				1.000	10.0	135.167	50.0	50.349
									12.0	123.920	60.0	44.379
INITIAL W.I. FRACTION			.863436	INITIAL NET OIL FRACTION				.647577	15.0	110.146	70.0	39.917
FINAL W.I. FRACTION			.863436	FINAL NET OIL FRACTION				.647577	18.0	99.170	80.0	36.448
PRODUCTION START DATE			7- 1-95	INITIAL NET GAS FRACTION				.647577	20.0	93.035	90.0	33.676
MONTHS IN FIRST LINE			12.00	FINAL NET GAS FRACTION				.647577	25.0	80.743	100.0	31.404

BEFORE THE  
 OIL CONSERVATION DIVISION  
 Case No. 11485 Exhibit No. — 7  
 Submitted By:  
 HEYCO  
 Hearing Date: March 7, 1996