

STRUCTURAL CROSS SECTION THROUGH LEGS 6 & 7

SOUTH

3,700'



1835-201G

8,500'



1835-161M

**Unorthodox Locations
1835-082N, 162P, 163C**

3,500'



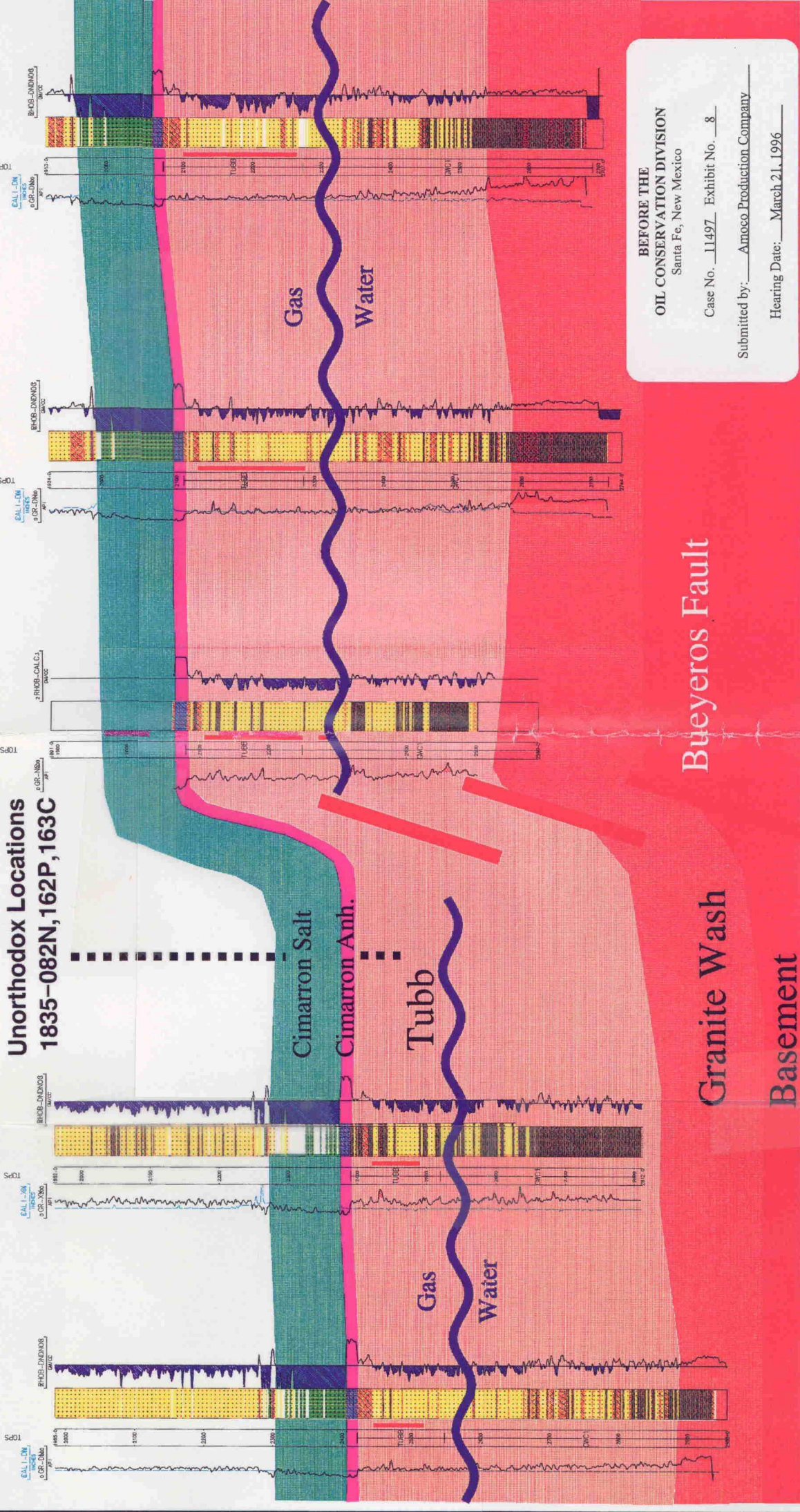
1835-101K-NIIKK

5,600'



1835-041G

DISTANCES ARE APPROXIMATE



BEFORE THE
OIL CONSERVATION DIVISION
Santa Fe, New Mexico
Case No. 11497 Exhibit No. 8
Submitted by: Amoco Production Company
Hearing Date: March 21, 1996

Bueyeros Fault
Granite Wash
Basement

H. J. WACKER MARCH, 1996