

BEFORE THE
OIL CONSERVATION DIVISION
Santa Fe, New Mexico

Case No. 11540 Exhibit No. 7

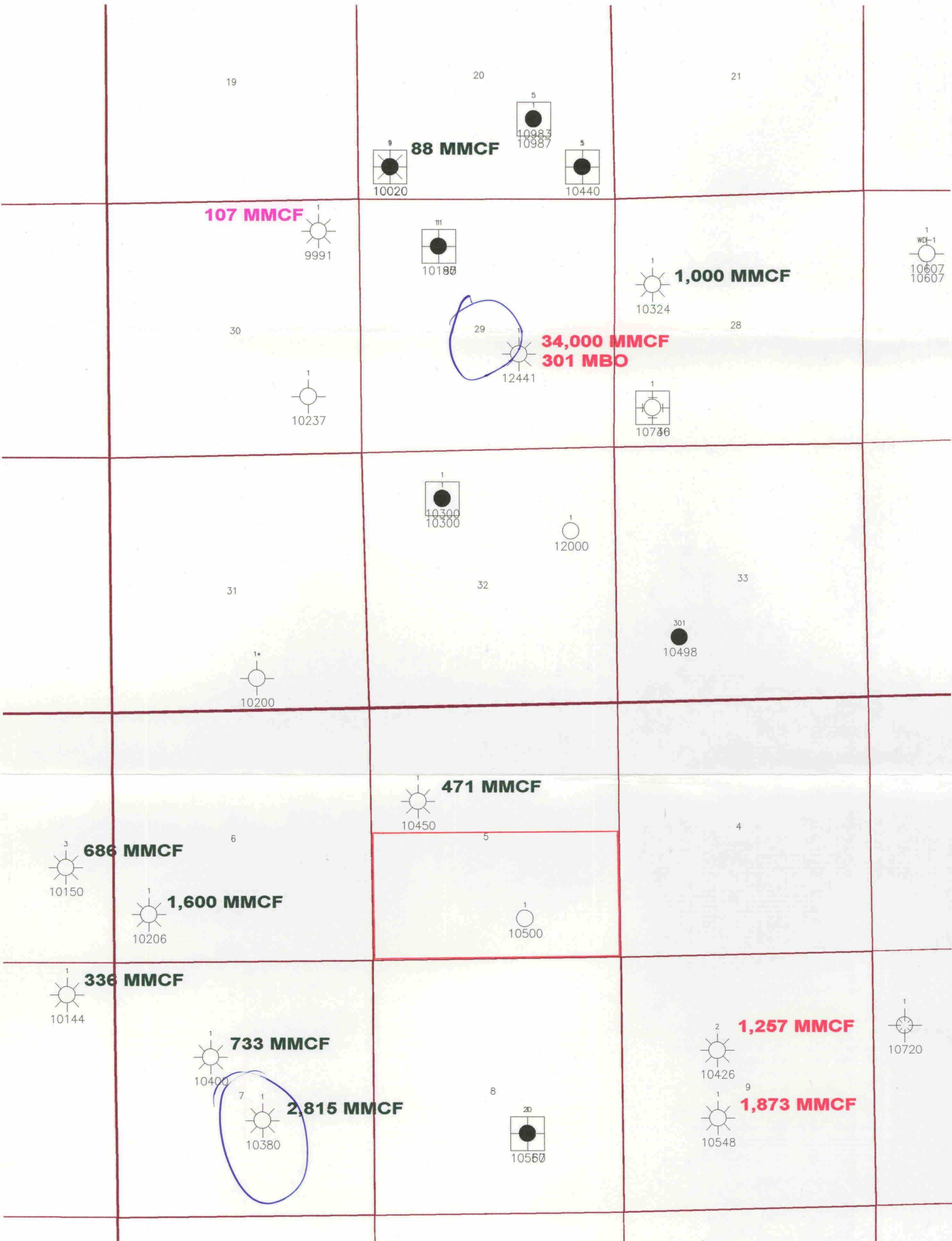
Submitted by: Enron Oil & Gas Company

Hearing Date: May 30, 1996




Enron Oil & Gas Company

EDDY COUNTY, NEW MEXICO
SOUTH EMPIRE PROSPECT
LOWER MORROW STRUCTURE MAP

ZINZ	CI = 50'	5/25/96
	Scale 1:24000.	CRLS:SEMP



LEGEND

-  M/MORROW BAR FACIES
-  M/MORROW BRAIDED CH. FACIES
-  M/MORROW CHANNEL FACIES

Enron Oil & Gas Company

EDDY COUNTY, NEW MEXICO
SOUTH EMPIRE PROSPECT
MORROW CUM PRODUCTION MAP

8

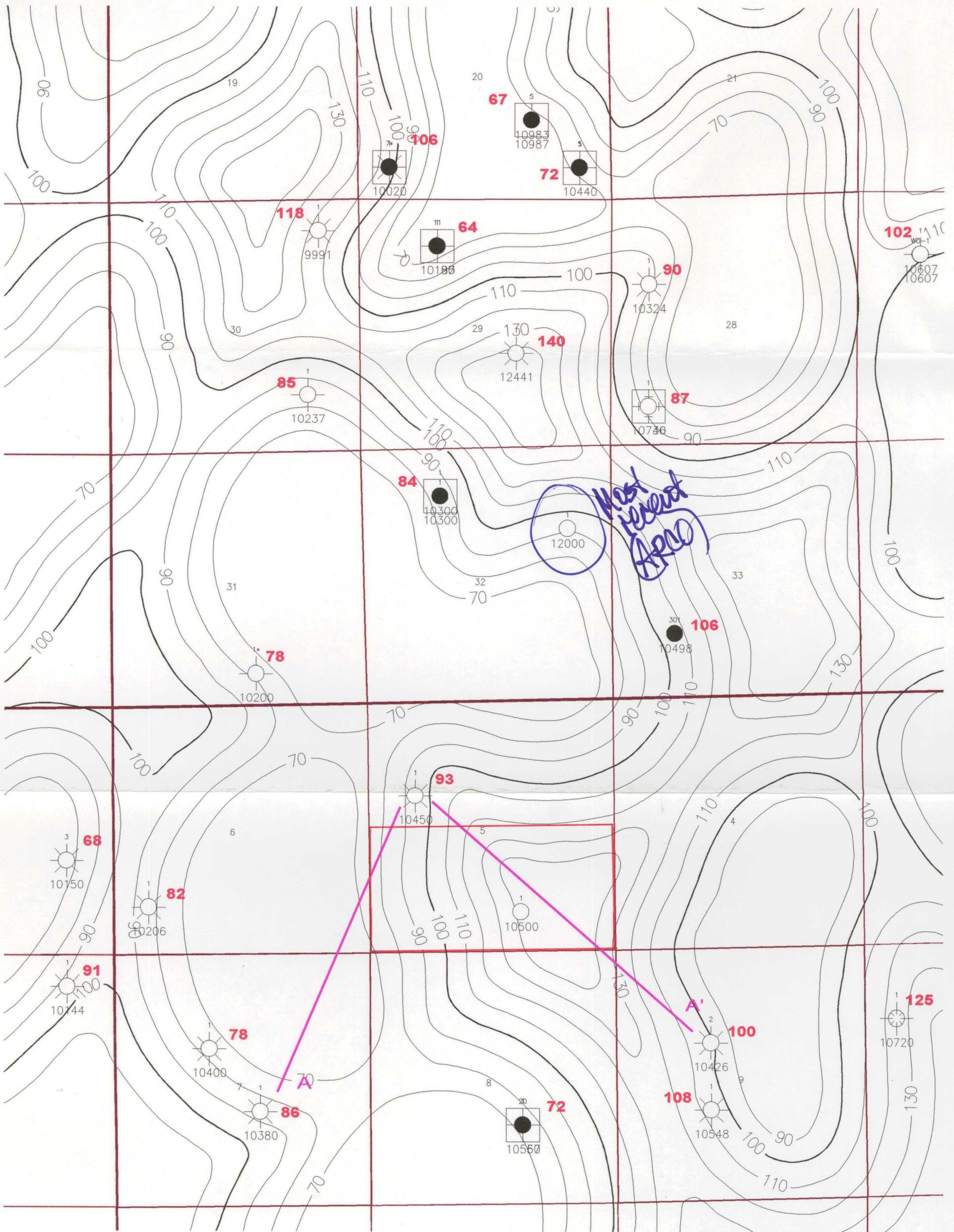
ZINZ		5/25/96
	Scale 1:24000.	CRLS:SEMP

**BEFORE THE
OIL CONSERVATION DIVISION**
Santa Fe, New Mexico

Case No. 11540 Exhibit No. 8

Submitted by: Enron Oil & Gas Company

Hearing Date: May 30, 1996



**BEFORE THE
OIL CONSERVATION DIVISION
Santa Fe, New Mexico**

Case No. 11540 Exhibit No. 11

Submitted by: Enron Oil & Gas Company

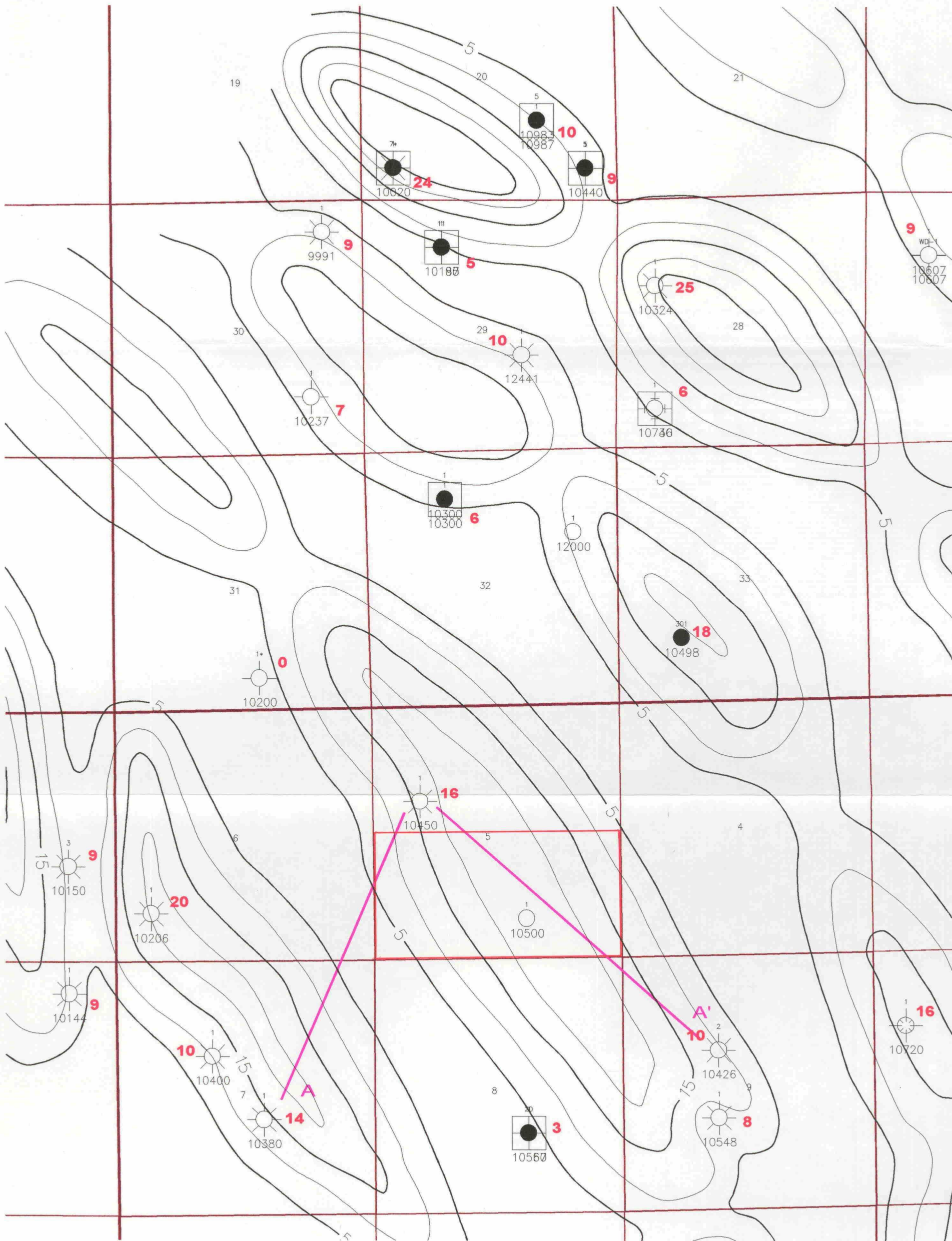
Hearing Date: May 30, 1996

Enron Oil & Gas Company

EDDY COUNTY, NEW MEXICO
SOUTH EMPIRE PROSPECT

ISOPACH-L/MORROW TO MISS UNCONFORMITY

ZINZ	CI = 10'	5/25/96
	Scale 1:24000.	CRLS:SEMP



BEFORE THE
OIL CONSERVATION DIVISION
Santa Fe, New Mexico

Case No. 11540 Exhibit No. 10

Submitted by: Enron Oil & Gas Company

Hearing Date: May 30, 1996

Enron Oil & Gas Company

EDDY COUNTY, NEW MEXICO
SOUTH EMPIRE PROSPECT
ISOPACH-L/MORROW BRAIDED CHANNEL FACIES

ZINZ	CI = 5'	5/25/96
	Scale 1:24000.	CRLS:SEMP