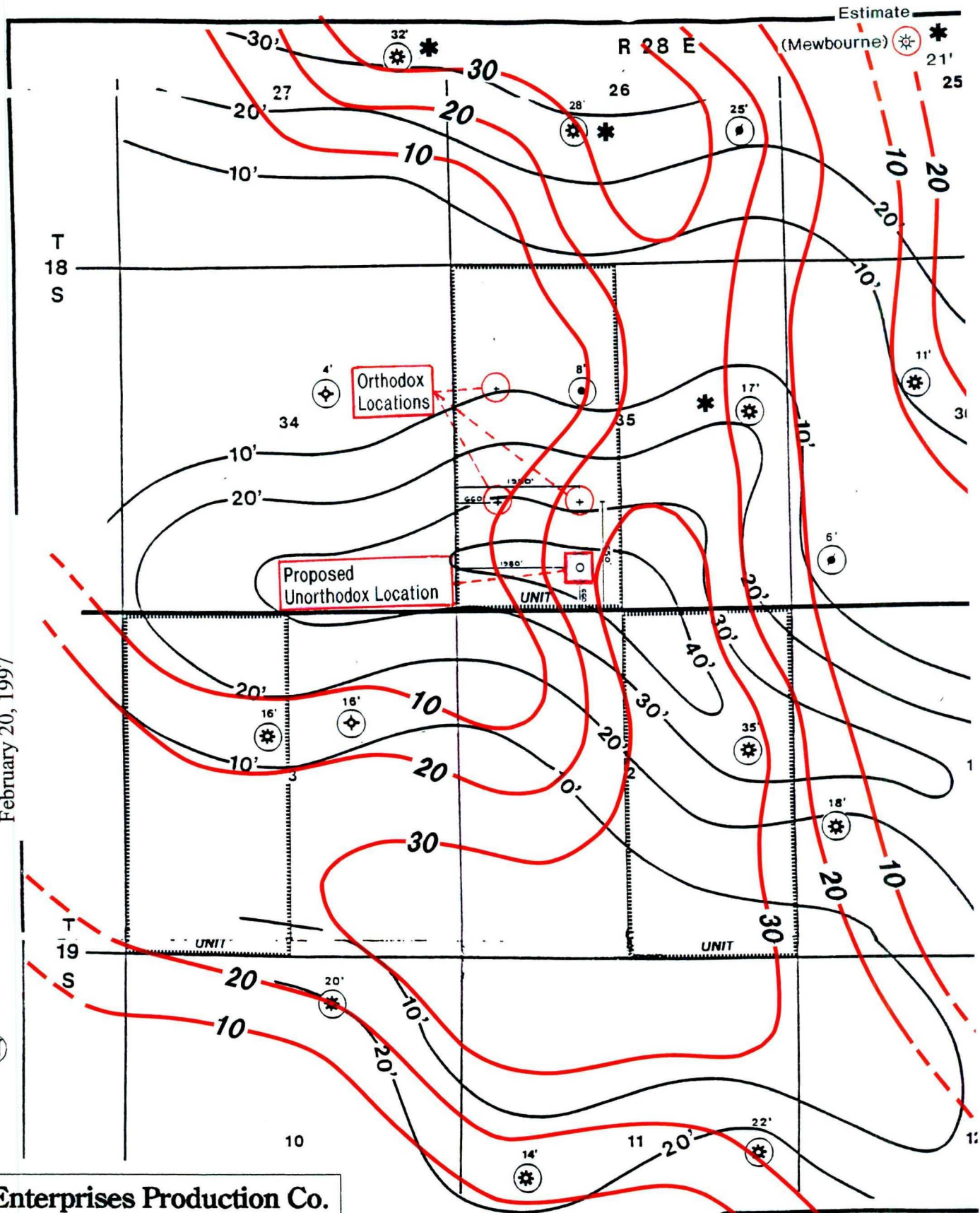


N.M.O.C.D. Case No. 11713
 Bass Enterprises Production Co.
 EXHIBIT No. 10
 February 20, 1997



Bass Enterprises Production Co.

PALMILLO MORROW

Mewbourne Lower Morrow "Orange" Sand
 Contouring compatible with regional Lower Morrow trend

— 20' — Mewbourne interpretation

* Avg. E.U.R. (L^R Morrow) = 3.05 BCF + 22.3 MBO

DATE:	2-14-97	SCALE:	Not to scale
DEPT:	Geology	INTER. BY:	G.H.
		DRAWN BY:	P.O.

+ NEAREST STANDARD LOCATION

○ ORANGE SANDSTONE PRODUCER

MEWBOURNE OIL CO.
 MIDLAND, TEXAS 79701

SCANLON DRAW PROSE

W2 - SECTION 35
 T-18-S, R-28-E
 EDDY COUNTY, NEW MEXICO
 LOWER MORROW GROSS "ORANGE"
 C.I. = 10'

BY: RALPH MOORE

D.

Exhibit A