

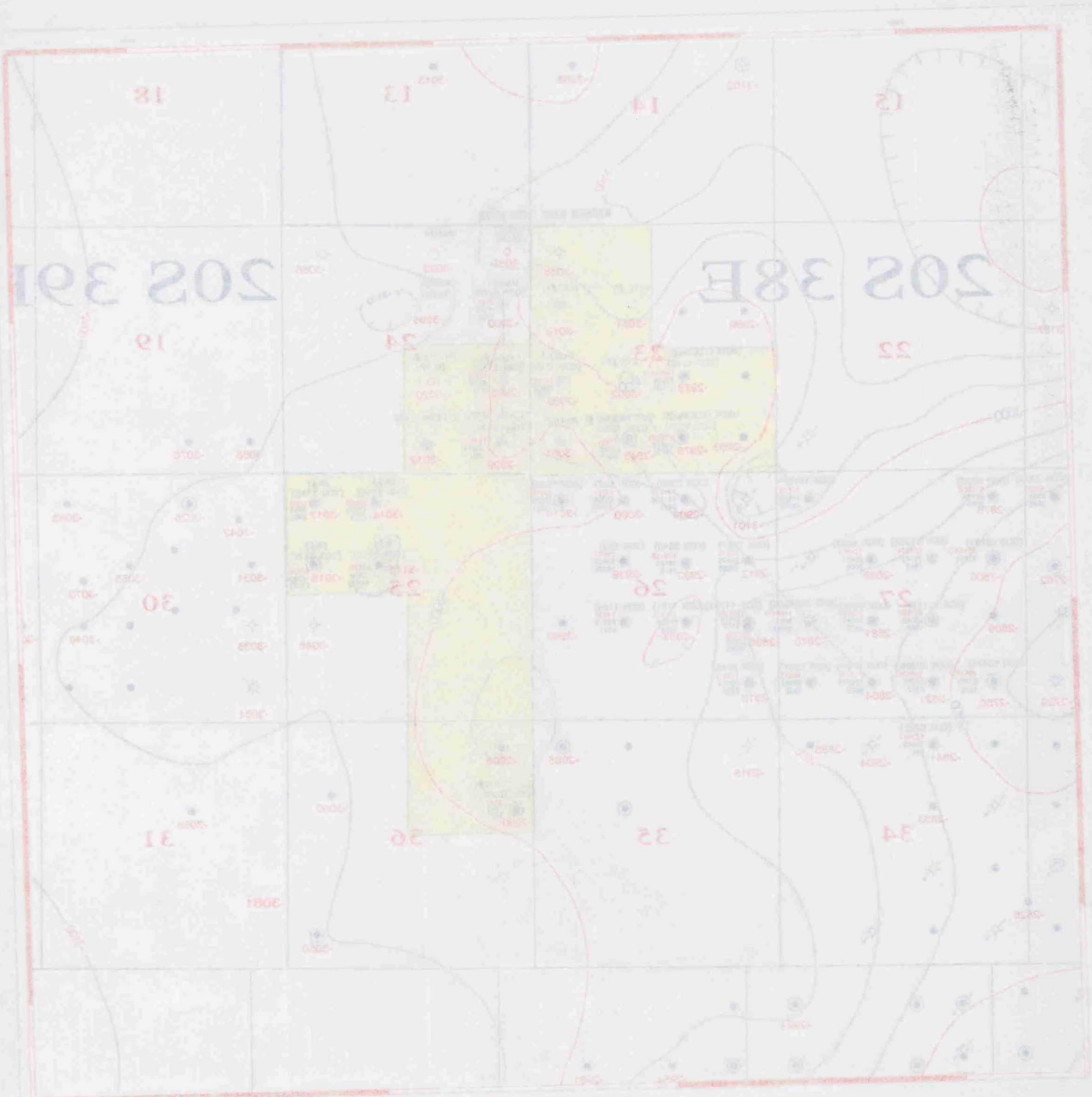
- LEGEND**
- TUBB PRODUCERS
  - WARREN TUBB EAST PROD. THRU 3/97
  - COLLINS AND WARE PROD. THRU 4/97
  - WARREN TUBB PROD. THRU 10/96
  - WELLS TD>6000'



**COLLINS AND WARE, INC.**

WARREN EAST TUBB FIELD  
TOP TUBB SILT STRUCTURE MAP  
TUBB PRODUCERS

LEA CO., NM	C.L. = 50'	8/1/97
MIKE WYBLETT	1" = 3000'	



**BEFORE THE  
OIL CONSERVATION COMMISSION**  
Santa Fe, New Mexico

Case No. 11798 (De Novo) Exhibit No. 4

Submitted by: Collins & Ware, Inc.

Hearing Date: August 14, 1997

WELL # ID # 6000  
 \* WORTH TUBER PROD. THREE 10000  
 \* COLLINS AND WARE PROD. THREE 10000  
 \* WORTH TUBER PROD. THREE 10000  
 \* WORTH TUBER PROD. THREE 10000  
 \* WORTH TUBER PROD. THREE 10000