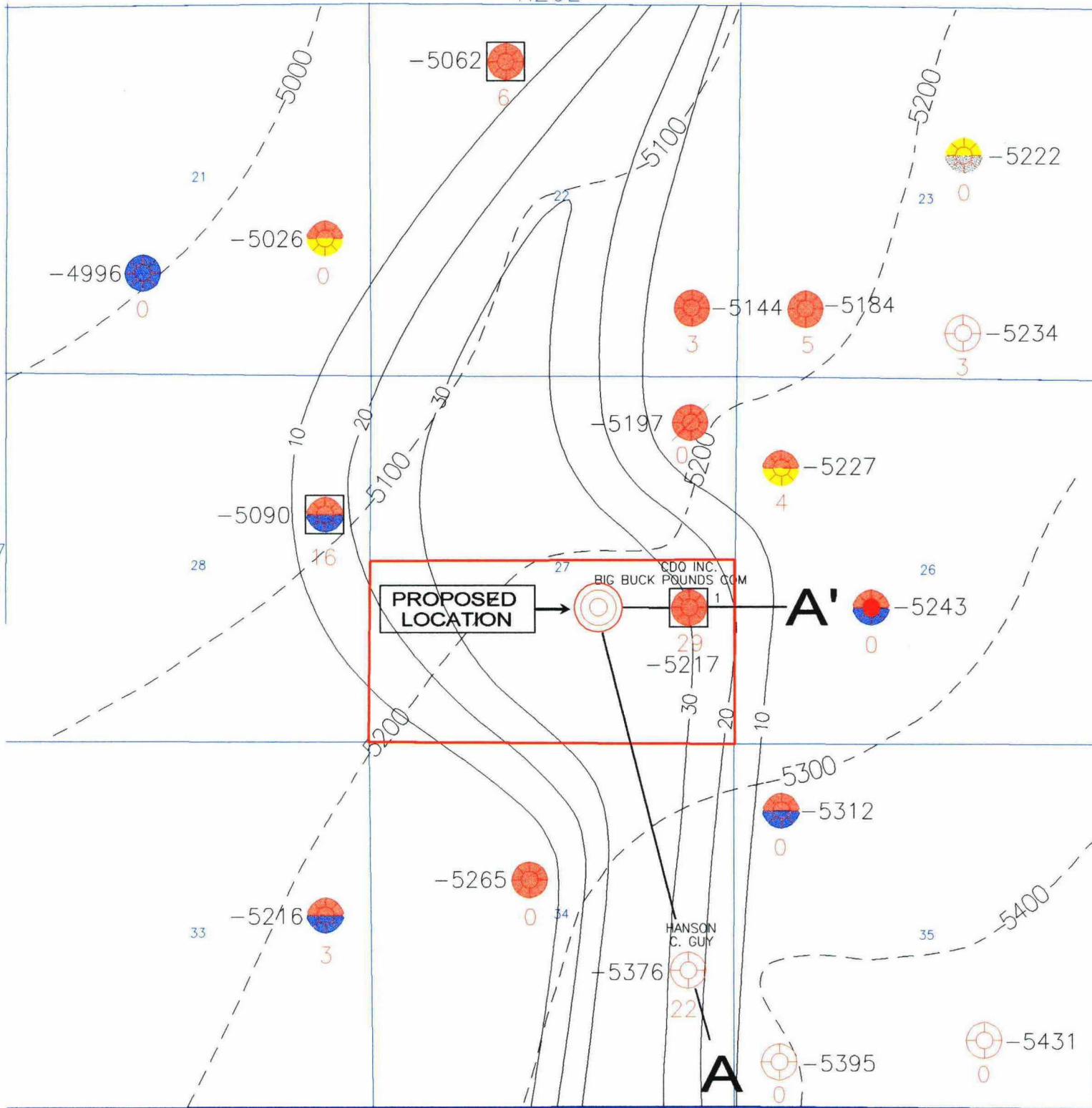


R26E



LEGEND

⊙ Morrow Penetration

29 ←-- Total Thickness Count of Lower Morrow Clastics Sand

-5217 ←-- Subsea Datum on Top of Morrow Clastics

⊙ Upper Penn Producer

⊙ Atoka Producer

⊙ Upper Morrow Clastics Producer

⊙ LOWER MORROW CLASTICS PRODUCER

⊙ Miss. Producer

— 30 — Solid Contours: Isoliths of Lower Morrow Clastics Sand Count; C.I. = 10 Feet

- - - 5000 - - - Dotted Contours: Structural Contours on Top of Morrow Clastics; C.I. = 100 Feet

YATES PETROLEUM CORP.
BEFORE EXAMINER CATANACH
NMOCD CASE NO. 11804
DATE: July 10, 1997

EXHIBIT NO. 6