

Stevens & Tull, Inc.
State "BF" #4
330'FNL + 330'FEL
Sec. 16, T-20S, R-33-E
Lea County, New Mexico

Intent: Convert Production well to SWD well.

Recompletion Procedure

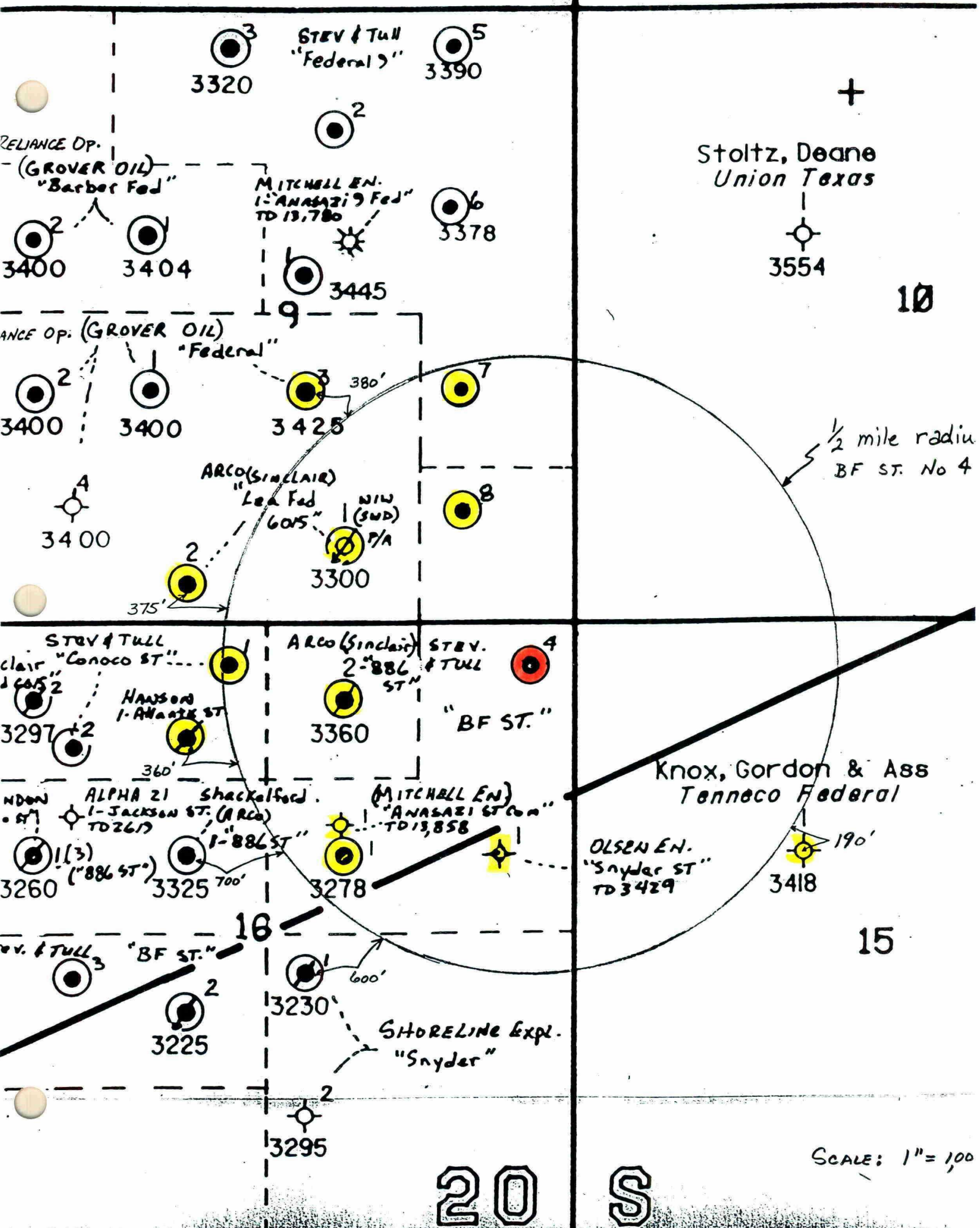
1. MIRU DDP, ND WHA, NU BOP, FCNT TEST BOP.
2. POOH & LD RODS & PUMP, POOH & LO TBG + BHA.
3. RU REVERSE UNIT, RIH W/W.S., DC + BIT.
4. DRILL OUT CMT + CIBP AT 3,365'; CIRC HOLE CLEAN.
5. SPOT 500 GAL 15% HCL F/3,302-3,418'.
6. RU WIRELINE PERFORATORS, RIH + PERFORATE F/3,302'-3,418' W/3JSPF.
ON 120 DEGREE PHASING, S.F.
7. PU + RIH W/WS + COMPL. PKR, SPA 3.400.
8. RU ACID CO. + BREAKDOWN + ACIDIZE PERFS F/3,407'-3,418' ACIDIZED
W/2,000 GAL OF 15% HCL.
9. RELEASE PKR, POOH. PU + RIH W/WS., COMPL PKR + RBP. SET BP @
3,358', SPA 3,298'.
10. BREAKDOWN + ACIDIZE PERFS F/3,302'-3,358' W/4,000 GAL 15% HCL.
11. RELEASE PKR + RETRIVE RBP, POOH W/WS + COMPL. EQUIP.
12. FLOW/SWAB LOAD BACK.
13. PU + RIH W/2 7/8" B.S. INJ TBG, BAKER MOD. AD-1 INJ PKR.
SPA 3,100 FT.
14. ND BOP, NU INJ. WHA. RDMO DD PU.
15. CLEAN UP LOCATION.

BF STATE #4 INJECTION REQUEST

WELLBORE SUMMARY

	<u>WELL NAME</u>	<u>UNIT</u>	<u>SECTION</u>	<u>STATUS</u>
1.	STATE BF #4	A	16-20S-33E	PRODUCING
2.	LEA 886 STATE #2	B	16-20S-33E	P&A
3.	ATLANTIC STATE #1	C	16-20S-33E	P&A
4.	CONOCO STATE #1	C	16-20S-33E	PRODUCING
5.	ANASAZI 16 STATE #1	G	16-20S-33E	T/A
6.	STATE BF #1	G	16-20S-33E	PRODUCING
7.	SNYDER-STATE #1	H	16-20S-33E	P&A
8.	FEDERAL 9 #7	I	9-20S33E	PRODUCING
9.	FEDERAL #3	J	9-20S-33E	PRODUCING
10.	LEA 6015 ARC FEDERAL #1	N	9-20S-33E	P&A
11.	LEA 6015 ARC FEDERAL #2	O	9-20S-33E	P&A
12.	FEDERAL "9" #8	P	9-20S-33E	PRODUCING
13.	TENNECO-FEDERAL #1	F	15-20S-33E	P&A

F:\EX\BFSTATE4.INJ



STEVENS & TULL INC.

State "BF" Well No. 4

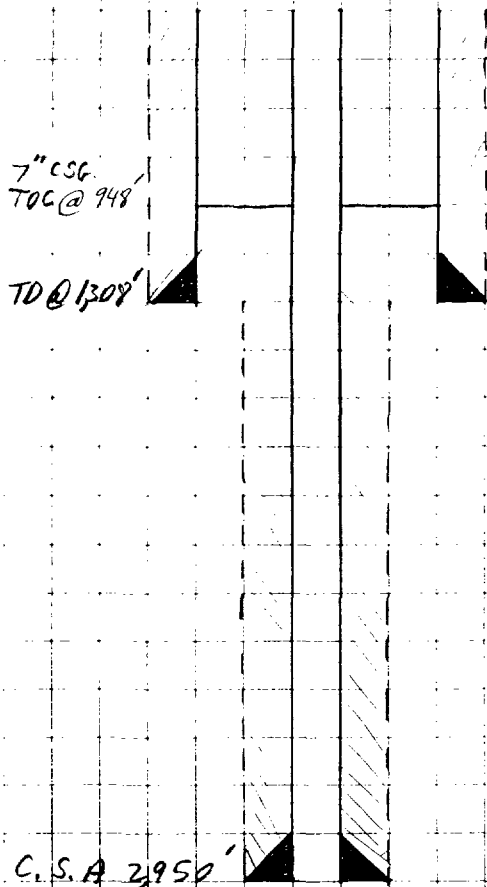
Wells within area of review

OPERATOR	WELL NAME	LOCATION	DATE SPUDDED (ORIG. INTENT)	PRESENT TD ORIG. TD	SURFACE CASING			PRODUCTION CASING			TOC	REASON	PRODUCING PERFORATIONS (ZONE)
					SIZE	DEPTH	CEMENT	SIZE	DEPTH	CEMENT			
Stevens & Tull Inc.	State "BF" #4	330' FNL & 330' FEL Sec. 16, T-20-S, R-33-E Lea County, NM	11/17/95 (OIL)	3,365 3,470	9-5/8"	1,115'	440 sx	5-1/2"	3,465'	635 sx	Cmt. Crit. to Pit	D.R. !	3,160'-3,394' (UPPER YATES)
Shackelford Oil Co.	Lea 886 State #2	660' FNL & 1,980' FEL Sec. 16, T-20-S, R-33-E Lea County, NM	2/26/60 (OIL)	(P & A) 3,360'	9-5/8"	1,308'	914 sx	7"	2,950'	465 sx	948'	Calc. *	(P & A)
Stevens & Tull Inc.	Atlantic State #1	990' FNL & 1,980' FWL Sec. 16, T-20-S, R-33-E Lea County, NM	12/21/60 (OIL)	(P & A) 3,265'	8-5/8"	1,220'	600 sx	4-1/2"	3,260'	450 sx	730'	Calc. *	(P & A)
Stevens & Tull Inc.	Conoco State #1	330' FNL & 2,310' FWL Sec. 16, T-20-S, R-33-E Lea County, NM	7/23/96 (OIL)	3,269' 3,311'	8-5/8"	1,313'	800 sx	5-1/2"	3,311'	610 sx	Cmt. Crit. to Pit	D.R.	3,205'-3,215' (UPPER YATES)
Stevens & Tull Inc.	Anasazi 16 State #1	1,730' FNL & 1,980' FEL Sec. 16, T-20-S, R-33-E Lea County, NM	5/28/63 (OIL)	9,363' 13,858'	20"	497'	900 sx	5-1/2"	13,858'	1,200 sx	9,287'	Calc. *	(T & A) (BONE SPRINGS)
Stevens & Tull Inc.	State BF #1	1,980' FNL & 1,980' FEL Sec. 16, T-20-S, R-33-E Lea County, NM	5/9/60 (OIL)	3,120' 3,278'	9-5/8"	1,236'	600 sx	5"	3,275'	50 sx	2,838'	Calc. *	3,090'-3,107' (UPPER YATES)
Stevens & Tull Inc.	Federal 9 #7	2,310' FSL & 990' FEL Sec. 9, T-20-S, R-33-E Lea County, NM	8/28/65 (OIL)	3,304' 3,435'	8-5/8"	1,310'	800 sx	5-1/2"	3,425'	635 sx	Cmt. Crit. to Pit	OMB-#1004-0137	3,290'-3,296' (UPPER YATES)
Reliance Oil Co.	Federal #3	1,980' FSL & 2,310' FEL Sec. 9, T-20-S, R-33-E Lea County, NM	2/26/68 (OIL)	3,380' 3,425'	8-5/8"	1,218'	750 sx	4-1/2"	3,420'	650 sx	600'	OMB-#1004-0137	3,022'-3,100' (UPPER YATES)
Reliance Oil Co.	Lea 6015 ARC Federal #1	660' FSL & 1,980' FEL Sec. 9, T-20-S, R-33-E Lea County, NM	4/3/60 (OIL)	(P & A) 3,300'	9-5/8"	1,357'	734 sx	5"	3,300'	50 sx	2,868'	Calc. *	(P & A)
Reliance Oil Co.	Lea 6015 ARC Federal #2	330' FSL & 1,980' FWL Sec. 9, T-20-S, R-33-E Lea County, NM	7/30/63 (OIL)	(P & A) 3,350'	9-5/8"	1,285'	450 sx	5"	3,350'	90 sx	2,598'	Calc. *	(P & A)
Stevens & Tull Inc.	Federal 9 #8	990' FSL & 990' FEL Sec. 15, T-20-S, R-33-E Lea County, NM	7/13/66 (OIL)	3,275' 3,462'	8-5/8"	1,313'	800 sx	5-1/2"	3,462'	610 sx	Cmt. Crit. to Pit	OMB-#1004-0137	3,116'-3,144' (UPPER YATES)
Fina Oil & Chem. Co.	Tenneco-Federal #1	Gen. of SE/4, NW/4 of Sec. 15, T-20-S, R-33-E Lea County, NM	12/30/63 (OIL)	(P & A) 3,418'	9-5/8"	1,350'	842 sx	4-1/2"	3,418'	35 sx	3,080'	BB-#42-R355.5	(P & A)
Olsen Energy Inc.	Snyder-State #1	660' FEL & 1,980' FNL Sec. 16, T-20-S, R-33-E Lea County, NM	2/22/69 (OIL)	(D & A) 3,418'	8-5/8"	1,259'	640 sx	NO PRODUCTION CASING			Cmt. Crit. to Pit	C-105	(D & A)

SUBJECT Lea 286 State #2
 TOC calculation

PAGE NO. OF...
 BY *AKL* DATE 8/27/97

1.32 ft³ yield/sack CMT
 50% Safety Factor



12 1/4" Diameter Hole 9.14 SX of CMT.
 9.5/8", 36" x 40" SURFACE CSG. C.S.A 1,308'
 VOLUME = 0.3132 ft³/lin ft.
 VOLUME of 9.5/8" x 12 1/4" HOLE = 410 ft³
 VOLUME OF 7" x 9.5/8" ANNULUS = 218 ft³
 9.14 SX CMT · 1.32 ft³ = 1206 ft³ · .5(SF) = 603 ft³
 603 ft³ - 410 ft³ = 193 ft³ or 146 SX of CMT. CIRC.

8 3/4" Diameter Hole 4.65 SX of CMT.
 7", 20" Production CSG. CSA 2,950'
 VOLUME = 0.1503 ft³/lin ft.
 VOLUME OF 7" x 8 3/4" HOLE = 247 ft³

4.65 SX CMT · 1.32 ft³ yield = 614 ft³ · .5(SF) = 307 ft³
 307 ft³ - 247 ft³ = 60 ft³

60 ft³ · 5.995 lin ft/ft³ = 360 lin ft

1308 ft - 360 ft = 948 ft

TOC for 7" CSG 948 ft

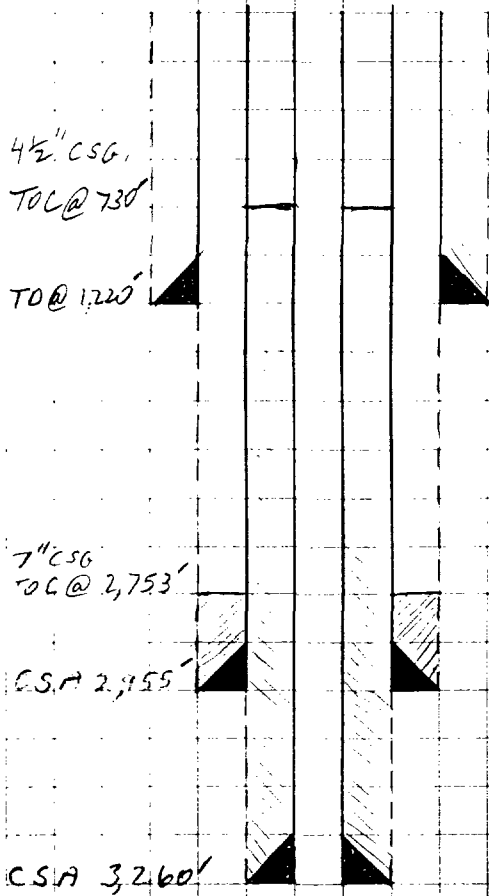
ILLEGIBLE

SUBJECT ATLANTIC STATE #1

TOC CALCULATION

PAGE NO. _____ OF _____

BY *JKL* DATE 8/27/97



1.32 ft³ yield/cask CMT.
50% SAFETY FACTOR

SURFACE CASING CMT. CIRC. TO PITS.
19 1/2" HOLE.
2 1/2" SURFACE CASING. CSA 1,220'

INTERMEDIATE CASING
8" HOLE 2.5 SX. CMT.
2,955' CASING. CSA 2,955'
VOLUME OF 7" CSG X 8" HOLE = .0818 ft³/lin. ft.
VOLUME OF 7" CSG X 8" HOLE = 142 ft³
1.32 ft³ · 1.32 ft³ = 33 ft³ · 0.5 (S.F.) = 16.5 ft³
16.5 ft³ · 12.2231 lin. ft./ft³ = 202 lin. ft.
2,955 ft - 202 ft = 2,753 ft
T.O.C OF 7" INTERMEDIATE CSG. IS 2,753 ft.

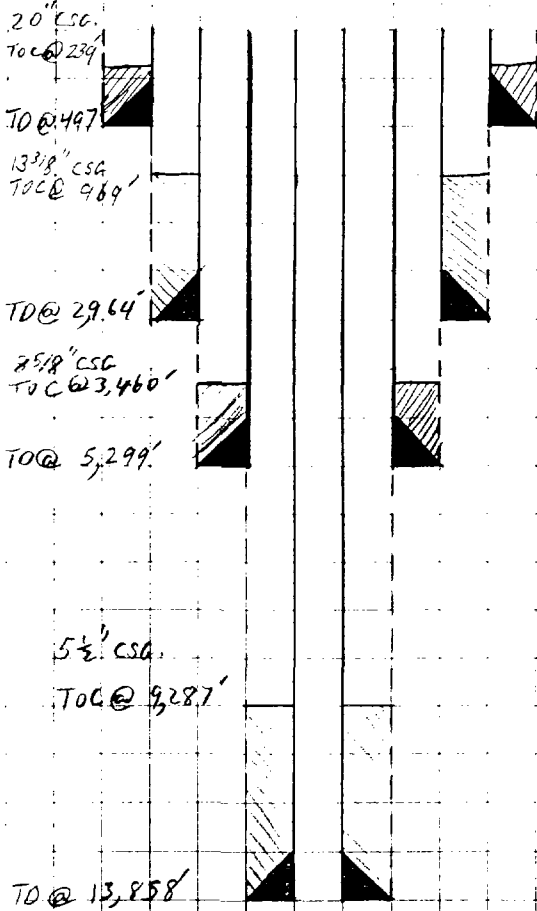
PRODUCTION CASING
6 1/2" HOLE 450 SX CMT.
4 1/2" 9.5" CASING. CSA 3,260'
VOLUME OF 4 1/2" CSG X 6 1/2" HOLE = 0.12 ft³/lin. ft.
VOLUME OF 4 1/2" CSG X 6 1/2" HOLE = 37 ft³
450 SX CMT. · 1.32 ft³/SX = 594 ft³ · 0.5 (S.F.) = 297 ft³
297 ft³ - 37 ft³ = 260 ft³
VOLUME OF 4 1/2" X 7" ANN. = 0.1169 ft³/lin. ft.
= 8.556 lin. ft./ft³
VOLUME OF 4 1/2" X 7" ANN = 345 ft³
260 ft³ · 8.556 lin. ft./ft³ = 2,225 lin. ft.
2,955' - 2,225' = 730 ft.

T.O.C FOR 4 1/2" CSG. IS 730 ft

SUBJECT ANASAZI 16 State #1
 TOC Calculation

PAGE NO. OF
 BY JKL DATE 8/27/97

1.32 ft³ yield/sack CMT
 50% Safety Factor



SURFACE CASING

26" HOLE 900 SX CMT.
 20", 9.4# CASING. CSA .497'
 VOLUME OF 20" CASING X 26" HOLE = 1.5053 ft³/lin ft
 VOLUME OF 20" CASING X 26" HOLE = 748 ft³
 900 SX CMT. • 1.32 ft³/SX = 1,188 ft³. 50 (SF) = 594 ft³
 594 ft³ • 0.6643 lin ft/ft³ = 355 lin ft.
 594 ft - 355 ft = 239 ft.
 TOC OF SURFACE CSG IS 239 ft.

INTERMEDIATE CASING

17 1/2" HOLE 2,100 SX CMT.
 13 3/8", 6.8# CASING. CSA 2,964'
 VOLUME OF 13 3/8" CASING X 17 1/2" HOLE = 0.6946 ft³/lin ft
 = 1.4396 lin ft/ft³
 VOLUME OF 13 3/8" CSG X 17 1/2" HOLE = 1,714 ft³
 2,100 SX CMT. • 1.32 ft³/SX = 2,772 ft³ • 50 (S.F.) = 1,386 ft³
 1,386 ft³ • 1.4396 lin ft/ft³ = 1,995 lin ft
 2,964 ft - 1,995 ft = 969 ft
 TOC FOR INTERMEDIATE CSG IS 969 ft.

PRODUCTION CASING (CONTINUED)

VOLUME OF 5 1/2" CSG X 7 3/8" HOLE = 0.1733 ft³/lin ft
 = 5.7719 lin ft/ft³
 VOLUME OF 5 1/2" CSG X 7 3/8" = 1,483 ft³
 1,200 SX CMT. • 1.32 ft³/SX = 1,584 ft³ • 50 (SF) = 792 ft³
 792 ft³ • 5.7719 lin ft/ft³ = 4,571 lin ft
 13,858 ft - 4,571 ft = 9,287 ft
 TOC FOR PROD. CSG. IS 9,287 ft.

INTERMEDIATE CASING

12 1/4" HOLE 1,150 SX CMT.
 8 5/8", 3.2# CASING. CSA 5,299'
 VOLUME OF 8 5/8" CSG X 12 1/4" HOLE = 0.4127 ft³/lin ft
 = 2.4229 lin ft/ft³
 VOLUME OF 8 5/8" CSG X 12 1/4" HOLE = 964 ft³
 1,150 SX CMT. • 1.32 ft³/SX = 1,518 ft³ • 50 (S.F.) = 759 ft³
 759 ft³ • 2.4229 lin ft/ft³ = 1,839 lin ft.
 5,299 ft - 1,839 ft = 3,460 ft

PRODUCTION CASING

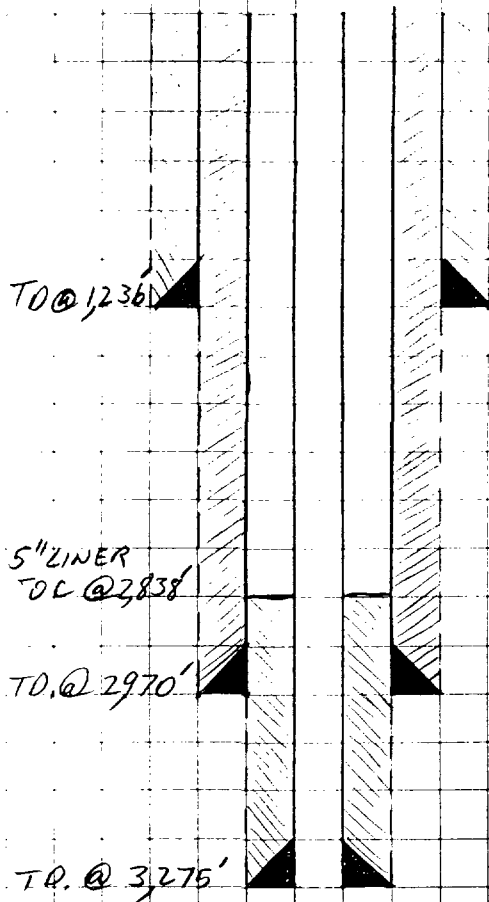
7 7/8" HOLE 1,200 SX. CMT.
 5 1/2", 1.7# CASING. CSA 13,858'

SUBJECT STATE "BF" #1

TOC CALCULATION

PAGE NO. OF

BY *PKJ* DATE 8/27/97



1. 32# yield / sack C.M.T. + 50% S.F.

SURFACE CASING

12 1/2" HOLE 600 SX. CMT
9 5/8", 32# + 36# CASING. CSA 1,236'
CMT CIRC. TO PIT.

PRODUCTION CASING

8 3/4" HOLE 800 SX. CMT.
7", 20# CASING. CSA 7,970'
CMT. CIRC. TO PIT.

LINER

6 1/8" HOLE 50 SX CMT.
5" 13# + 15# LINER. CSA 3,275'
VOLUME OF 5" LINER X 6 1/8" HOLE = 0.0683 lin ft / ft³
= 14.6494 lin ft / ft³

VOLUME OF 5" LINER X 6 1/8" HOLE = 21 ft³

50 SX CMT. · 1.32 ft³/SX = 66 ft³ · .5 (S.F.) = 33 ft³

33 ft³ - 21 ft³ = 12 ft³

VOLUME OF 5" LINER X 7" ANN = 10.992 lin ft / ft³
12 ft³ · 10.992 lin ft / ft³ = 132 lin ft

2970 ft - 132 ft = 2,838 ft

TOC FOR 5" LINER IS 2,838 ft

1.32 ft³ yield/sack CMT.
50% Safety Factor

SURFACE CASING

12 1/4" HOLE 73.4 SX. CMT.
9 5/8", 32# CASING. CSA. 1,357'
CMT. CIRC. TO PIT.

INTERMEDIATE CASING

8 3/4" HOLE 4.74 SX. CMT.
7", 20# CASING. CSA 3,022'
CMT. CIRC. TO PIT.

LINER

6 1/8" HOLE - ESTIMATED 5.0 SX. CMT.
5", 11.5# LINER. LSA 3,300'

$$\text{VOLUME OF 5" LINER X 6 1/8" HOLE} = 0.0683 \text{ lin ft}^3/\text{lin ft} \\ = 14.6494 \text{ lin ft}^3$$

$$\text{VOLUME OF 5" LINER X 7" ANN} = 19 \text{ ft}^3$$

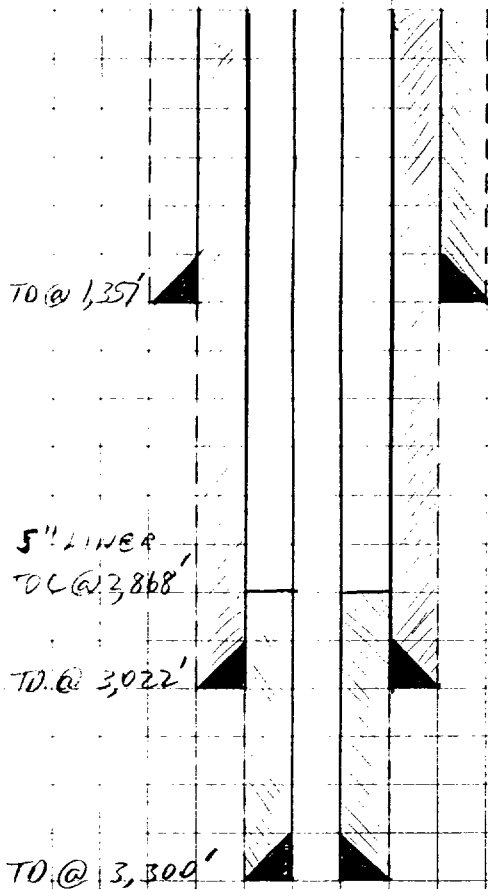
$$5.0 \text{ SX. CMT} \cdot 1.32 \text{ ft}^3/\text{SX} = 66 \text{ ft}^3 \cdot .5 (\text{S.F.}) = 33 \text{ ft}^3$$

$$33 \text{ ft}^3 - 19 \text{ ft}^3 = 14 \text{ ft}^3$$

$$\text{VOLUME OF 5" LINER X 7" ANN} = 10.992 \text{ lin ft}^3/\text{ft} \\ 14 \text{ ft}^3 \cdot 10.992 \text{ lin ft}^3/\text{ft} = 154 \text{ lin ft}^3$$

$$3,022 \text{ ft} - 154 \text{ ft} = 2,868 \text{ ft}$$

TOC FOR 5" LINER IS 2,868 ft

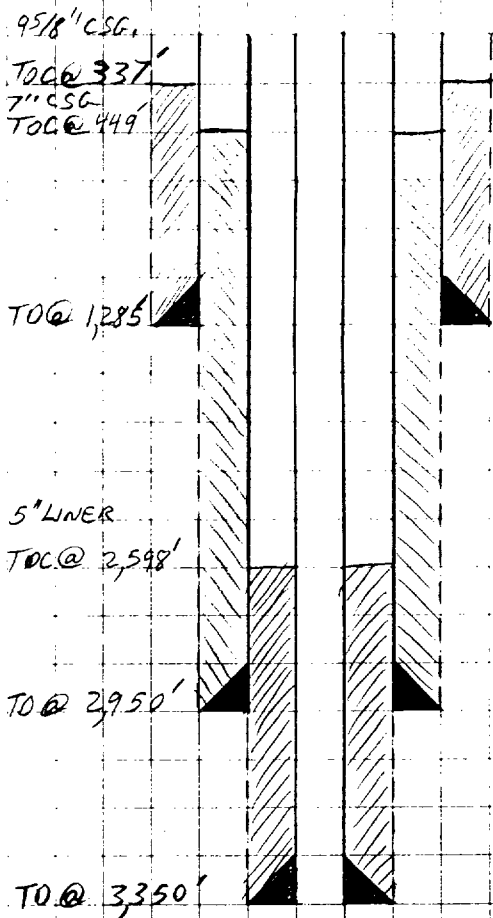


SUBJECT LEA 6015 ARC FEQ. #2

PAGE NO. OF

BY JKL DATE 8/27/97

TOL CALCULATION



1.32 ft³ yield/sack cmt.
50% Safety Factor

SURFACE CASING

12 1/4" HOLE - ESTIMATED 450 SX. CMT.

9 5/8" 32# CASING. CSA 1285'

$$\text{VOLUME OF 9 5/8" X 12 1/4" HOLE} = 0.3132 \text{ ft}^3/\text{lin ft} \\ = 3.1930 \text{ lin ft} / \text{ft}^3$$

$$\text{VOLUME OF 9 5/8" X 12 1/4" HOLE} = 403 \text{ ft}^3$$

$$450 \text{ SX CMT} \cdot 1.32 \text{ ft}^3/\text{SX} = 594 \text{ ft}^3 \cdot .50 (\text{S.F.}) = 297 \text{ ft}^3$$

$$297 \text{ ft}^3 \cdot 3.1930 \text{ lin ft} / \text{ft}^3 = 948 \text{ lin ft.}$$

$$1285' - 948' = 337'$$

TOL FOR SURFACE CSG. IS 337'

INTERMEDIATE CASING

8 3/4" HOLE - ESTIMATED 600 SX. CMT.

7" 20# CASING. CSA 2950'

$$\text{VOLUME OF 7" CSG X 8 3/4" HOLE} = 0.1503 \text{ ft}^3/\text{lin ft} \\ = 6.6520 \text{ lin ft} / \text{ft}^3$$

$$\text{VOLUME OF 7" CSG X 8 3/4" HOLE} = 250 \text{ ft}^3$$

$$600 \text{ SX CMT} \cdot 1.32 \text{ ft}^3/\text{SX} = 792 \text{ ft}^3 \cdot .50 (\text{S.F.}) = 396 \text{ ft}^3$$

$$396 \text{ ft}^3 - 250 \text{ ft}^3 = 146 \text{ ft}^3$$

$$\text{VOLUME OF 7" X 9 5/8" ANN} = 0.1746 \text{ ft}^3/\text{lin ft.} \\ = 5.726 \text{ lin ft} / \text{ft}^3$$

$$\text{VOLUME OF 7" X 9 5/8" ANN} = 224 \text{ ft}^3$$

$$146 \text{ ft}^3 \cdot 5.726 \text{ lin ft} / \text{ft}^3 = 838 \text{ lin ft}$$

$$1285 \text{ ft} - 838 \text{ ft} = 449 \text{ ft}$$

TOL FOR INTERMEDIATE CASING IS 449 ft

LINER

6 1/8" HOLE - ESTIMATED 90 SX. CMT.

5" 13# LINER. CSA 3350'

$$\text{VOLUME OF 5" LINER X 6 1/8" HOLE} = 0.0683 \text{ ft}^3/\text{lin ft.}$$

$$\text{VOLUME OF 5" LINER X 6 1/8" HOLE} = 27 \text{ ft}^3$$

$$90 \text{ SX CMT} \cdot 1.32 \text{ ft}^3/\text{SX} = 119 \text{ ft}^3 \cdot .50 (\text{S.F.}) = 59 \text{ ft}^3$$

$$59 \text{ ft}^3 - 27 \text{ ft}^3 = 32 \text{ ft}^3$$

$$\text{VOLUME OF 5" LINER X 7" ANN} = 10.992 \text{ lin ft} / \text{ft}^3$$

$$32 \text{ ft}^3 \cdot 10.992 \text{ lin ft} / \text{ft}^3 = 352 \text{ lin ft}$$

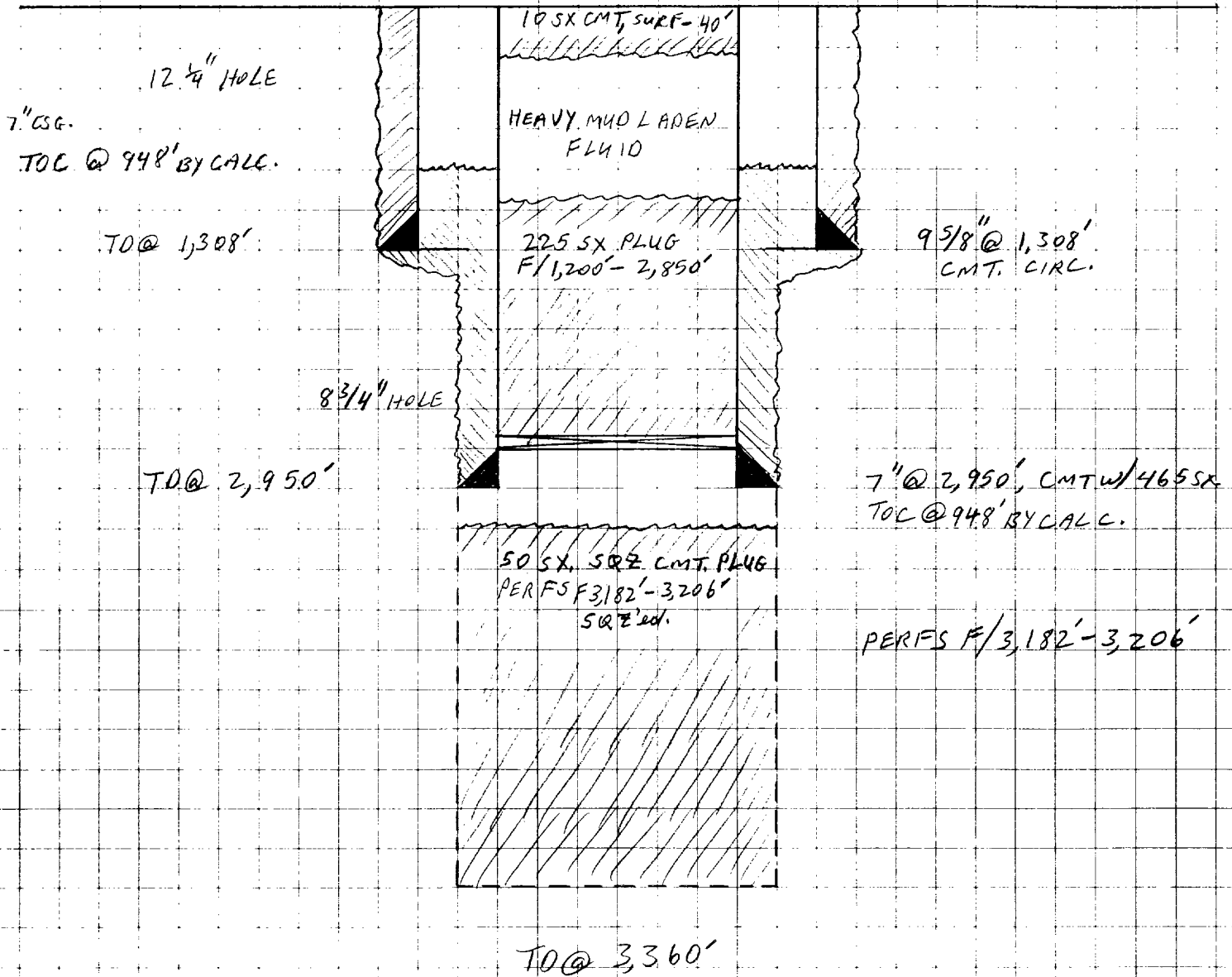
$$2950 \text{ ft} - 352 \text{ ft} = 2598 \text{ ft}$$

TOL FOR 5" LINER IS 2598 ft

SUBJECT: LEA 886 STATE #2
P+A SCHEMATIC

PAGE NO. OF
BY J.K.F. DATE 8/30/92

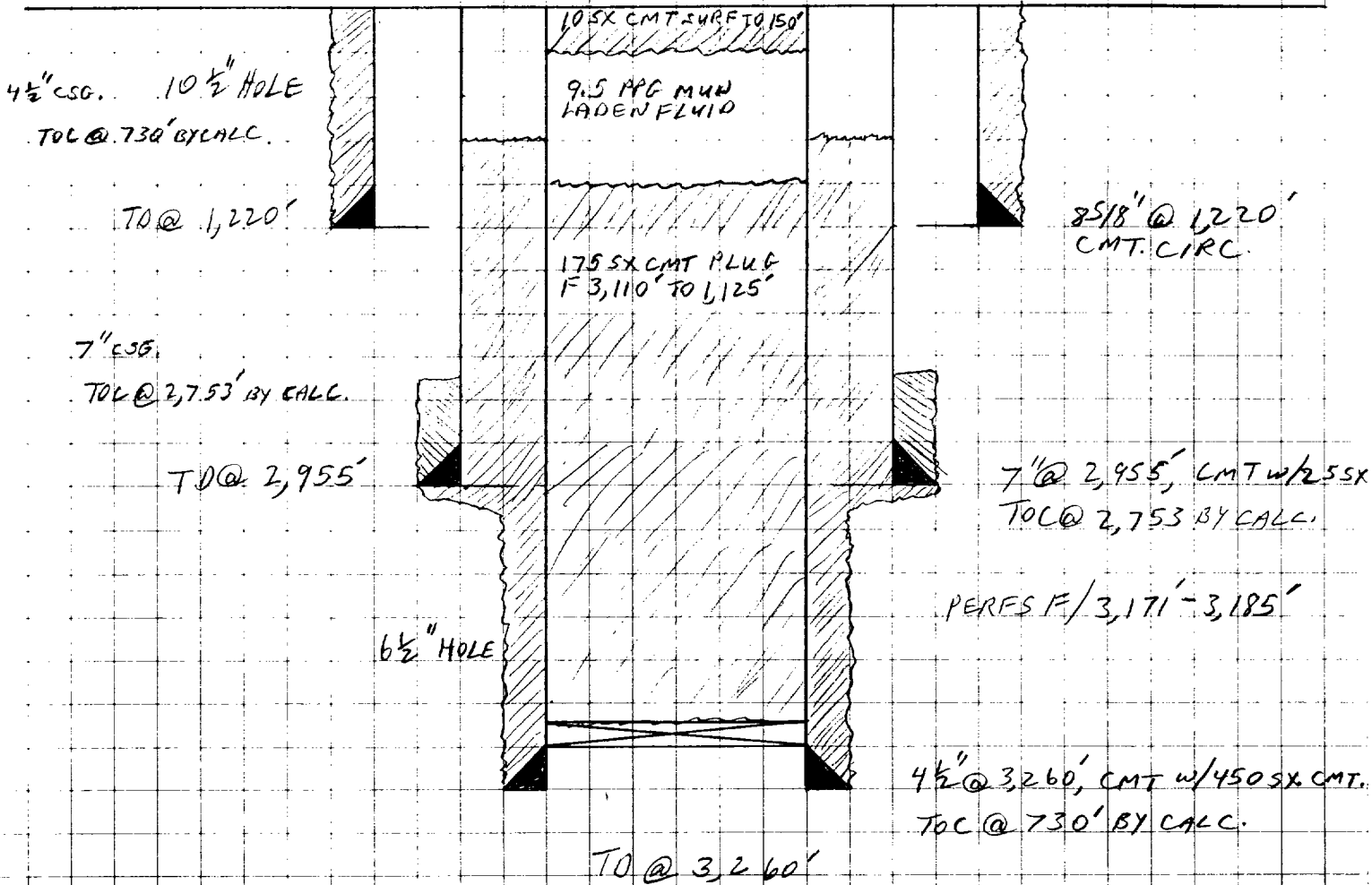
ATLANTIC RICHFIELD CO.
LEA 886 STATE #2 (P+A)
660 FNL + 1,980 FEL
SECTION 16, T20S, R 33E
LEA COUNTY, NEW MEXICO



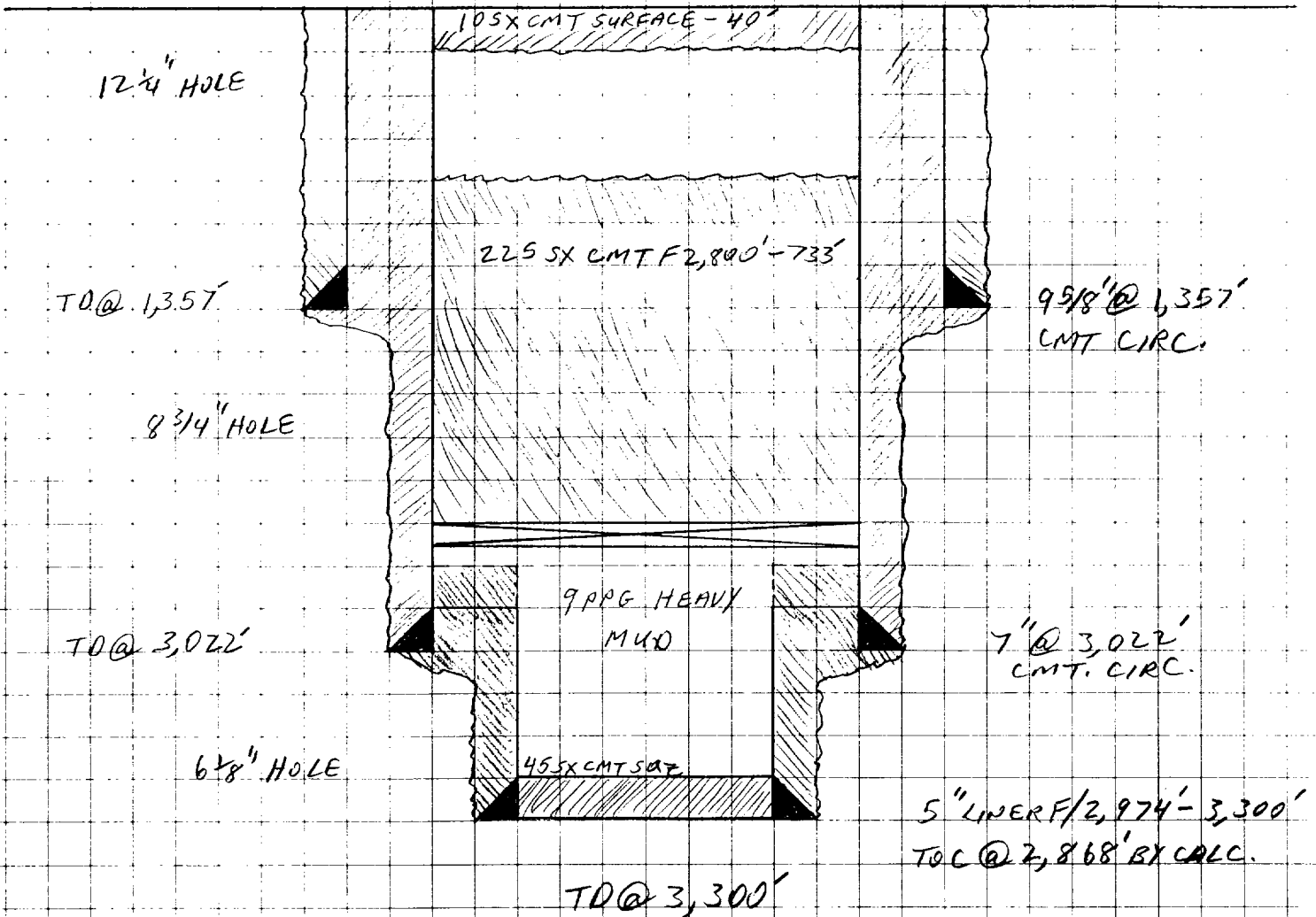
ATLANTIC STATE #1
P&A SCHEMATIC

BY JKL DATE 8/30/97

HANSON OIL CORPORATION
ATLANTIC STATE #1 (P&A)
990 FNL + 1,980 FWL
SECTION 16, T20S, R33E
LEA COUNTY, NEW MEXICO



RELIANCE OIL CO.
LEA 6015 ARC FEDERAL #1
660 FSL + 1,980 FEL
SECTION 9, T20S, R33E
LEA COUNTY, NEW MEXICO



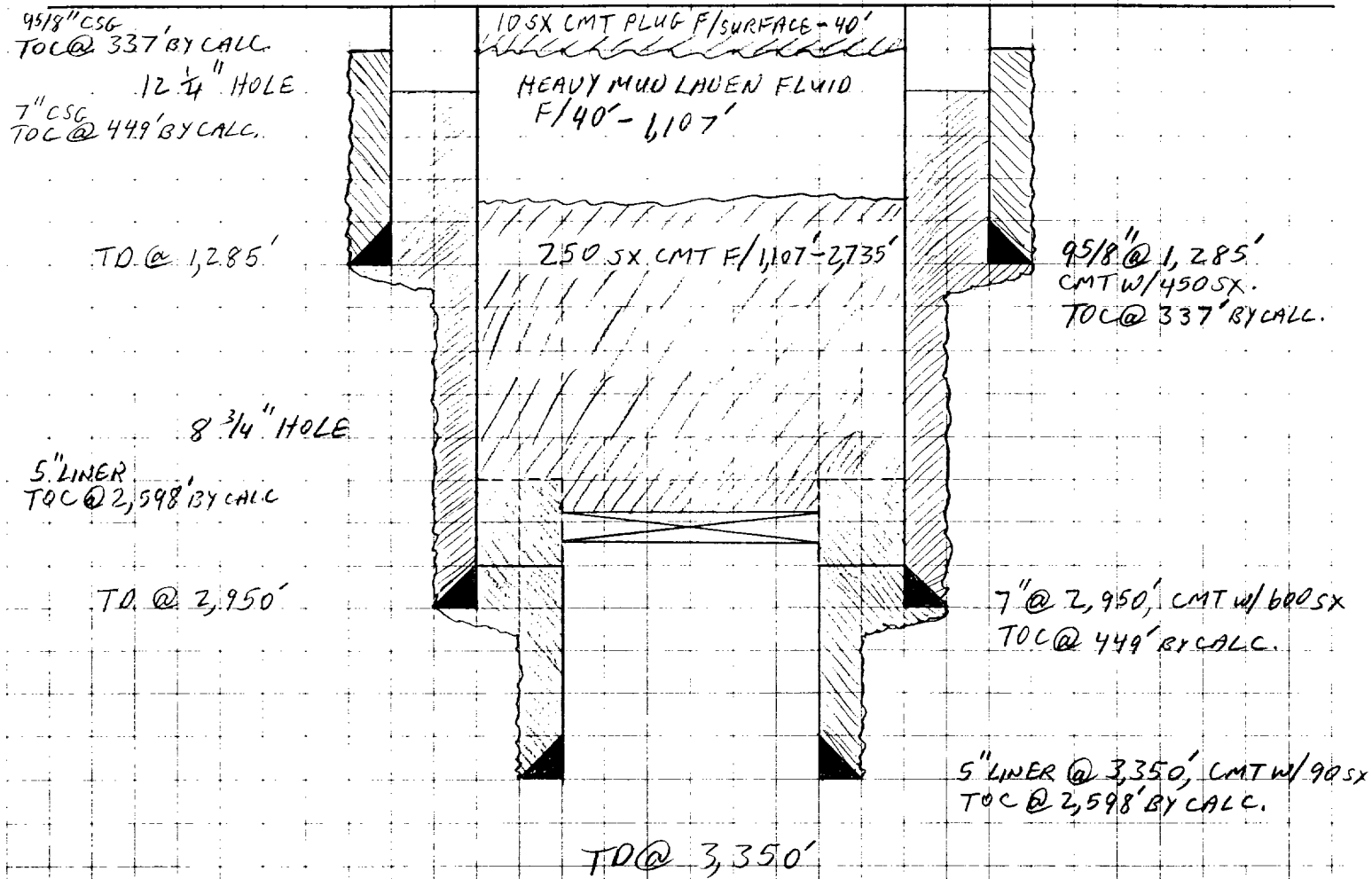
SUBJECT: LEA 6015 ARC FED. #2

P&A SCHEMATIC

PAGE NO.

BY: JKL DATE: 8/30/97

RELIANCE OIL CO.
LEA 6015 ARC FEDERAL #2
330 FSL + 1,980 FWL
SECTION 9, T20S, R33E
LEA COUNTY, NEW MEXICO



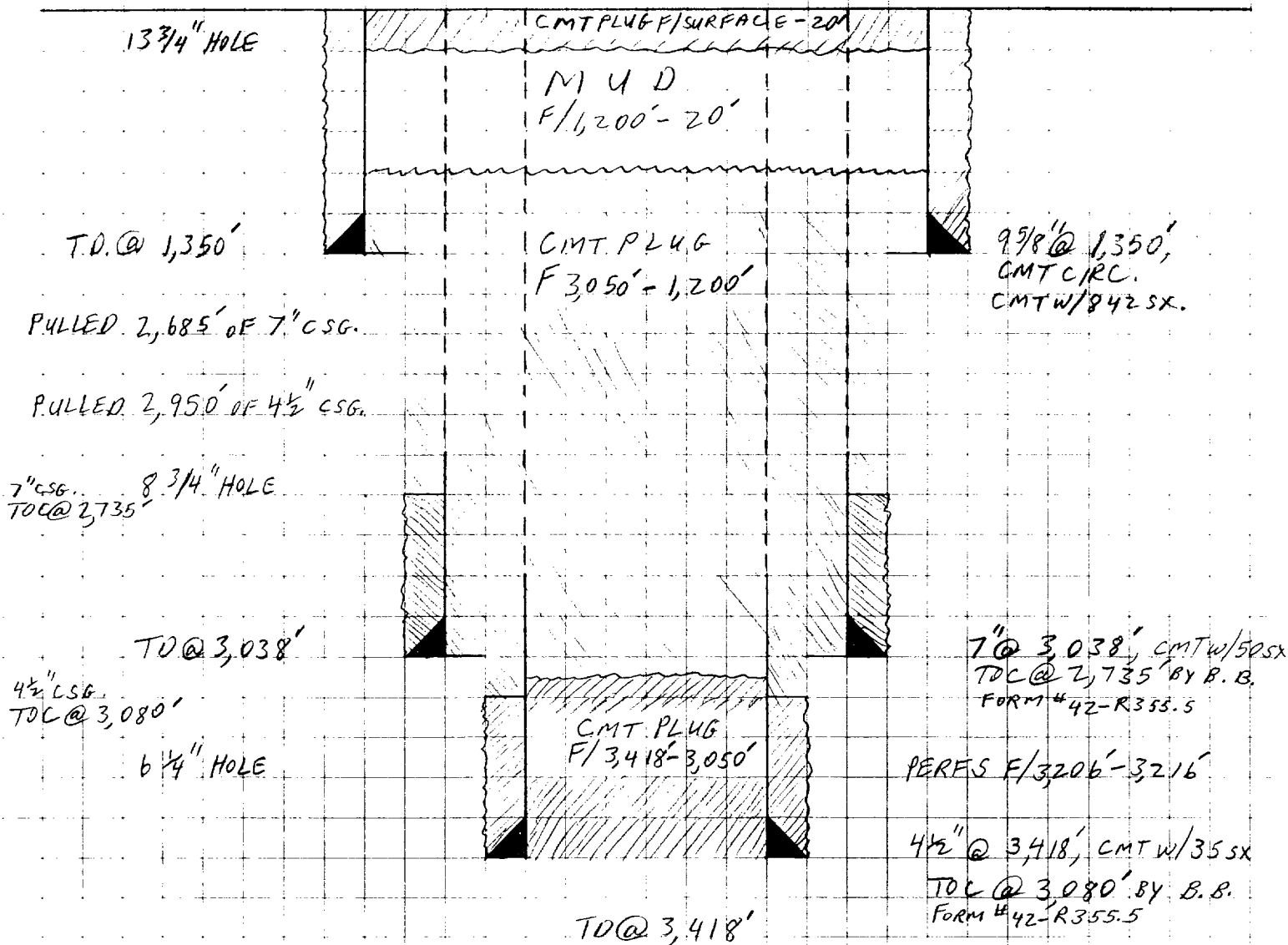
TENNECO-FED. #1

PAGE NO.

PROB. SCHEMATIC

BY *JKF* DATE 8/30/97

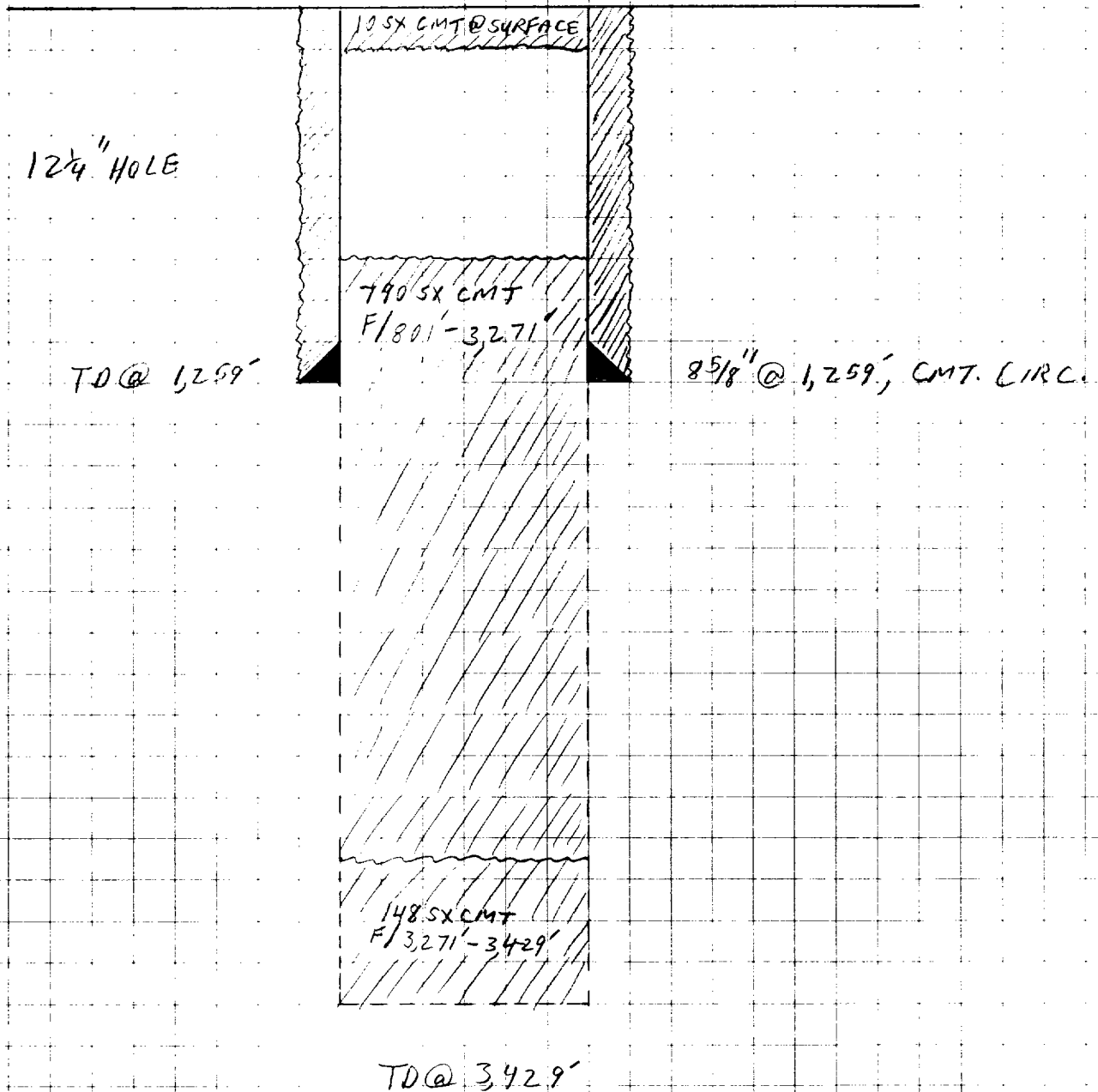
FINA OIL & CHEMICAL CO.
TENNECO - FEDERAL #1
CENTER OF SE/4, NW/4 OF SEC. 15
SECTION 15, T20S, R33E
LEA COUNTY, NEW MEXICO



SUBJECT: SNYDER-STATE #1
D & A SCHEMATIC

DATE NO. _____ OF _____
BY: *JKJ* DATE: 8/30/97

OLSEN ENERGY INC.
SNYDER-STATE #1 (D & A)
660 FEL + 1,980 FNL
SECTION 16, T20S, R33E
LEA COUNTY, NEW MEXICO



Submit to Appropriate District Office
 State Lease - 6 copies
 Lease - 5 copies
RICTI
 Box 1980, Hobbs, NM 88240

State of New Mexico
 Energy, Minerals and Natural Resources Department

RECEIVED DEC 26 1995

Form C-105
 Revised 1-1-89

OIL CONSERVATION DIVISION
 P.O. Box 2088
 Santa Fe, New Mexico 87504-2088

DISTRICT II
 P.O. Drawer DD, Artesia, NM 88210

DISTRICT III
 1000 Rio Brazos Rd., Aztec, NM 87410

WELL API NO. 30-025-33-144 33144
5. Indicate Type of Lease STATE <input checked="" type="checkbox"/> FEE <input type="checkbox"/>
6. State Oil & Gas Lease No. 15594

WELL COMPLETION OR RECOMPLETION REPORT AND LOG

1a. Type of Well: OIL WELL <input checked="" type="checkbox"/> GAS WELL <input type="checkbox"/> DRY <input type="checkbox"/> OTHER _____		7. Lease Name or Unit Agreement Name STATE BF	
b. Type of Completion: NEW WELL <input checked="" type="checkbox"/> WORK OVER <input type="checkbox"/> DEEPEN <input type="checkbox"/> PLUG BACK <input type="checkbox"/> DEF. RESVR <input type="checkbox"/> OTHER _____		8. Well No. 4	
2. Name of Operator Stevens & Tull, Inc		9. Pool name or Wildcat West Teas Y-SR	
3. Address of Operator P. O. Box 11005, Midland, Texas 79702		4. Well Location Unit Letter <u>A</u> : <u>330</u> Feet From The <u>North</u> Line and <u>330</u> Feet From The <u>East</u> Line Section <u>16</u> Township <u>20S</u> Range <u>33E</u> NMPM Lea County	
10. Date Spudded 11/17/95	11. Date T.D. Reached 11/25/95	12. Date Compl. (Ready to Prod.) 12/17/95	13. Elevations (DF & RKB, RT, GR, etc.) 3552 GR
14. Elev. Casinghead 3552	15. Total Depth 3470	16. Plug Back T.D. 3365	17. If Multiple Compl. How Many Zones? 18. Intervals Drilled By Rotary Tools <input checked="" type="checkbox"/> Cable Tools _____
19. Producing Interval(s), of this completion - Top, Bottom, Name 3160-3294' Yates Type Electric and Other Logs Run Dual LateroLog and Litho Density			20. Was Directional Survey Made Yes
			22. Was Well Cored No

23. CASING RECORD (Report all strings set in well)

CASING SIZE	WEIGHT LB/FT.	DEPTH SET	HOLE SIZE	CEMENTING RECORD	AMOUNT PULLED
9 5/8	36	1115	12 1/4	440 SX "C"	
5 1/2	17	3465	7 7/8	635 SX "C"	

24. LINER RECORD				25. TUBING RECORD			
SIZE	TOP	BOTTOM	SACKS CEMENT	SCREEN	SIZE	DEPTH SET	PACKER SET
					2 3/8	3180	None

26. Perforation record (interval, size, and number) 3160' - 3294' 23 Holes 0.385	27. ACID, SHOT, FRACTURE, CEMENT, SQUEEZE, ETC.	
	DEPTH INTERVAL	AMOUNT AND KIND MATERIAL USED
	3160'-3294'	Acidize w/ 1500 gals 156 NEPE Frac w/ 98,000 # 16/30 Sand + 33,000 gals gel

28. PRODUCTION							
Date First Production 12/17/95		Production Method (Flowing, gas lift, pumping - Size and type pump) Pumping - 2 X 1 1/2 X 16' RWBC				Well Status (Prod. or Shut-in) Prod.	
Date of Test 12/16/95	Hours Tested 24	Choke Size	Prod'n For Test Period	Oil - Bbl. 6	Gas - MCF 6	Water - Bbl. 50	Gas - Oil Ratio 1000
Flow Tubing Press. N/A	Casing Pressure 30	Calculated 24-Hour Rate	Oil - Bbl. 6	Gas - MCF 6	Water - Bbl. 50	Oil Gravity - API - (Corr.) 30.4	
Disposition of Gas (Sold, used for fuel, vented, etc.) vented						Test Witnessed By Roy Peugh	

30. List Attachments
 Electric Logs, Deviation Survey

31. I hereby certify that the information shown on both sides of this form is true and complete to the best of my knowledge and belief

Signature [Signature] Printed Name Michael G. Mooney Title Consulting Engineer Date 12/20/95

INSTRUCTIONS

This form is to be filed with the appropriate District Office of the Division not later than 20 days after the completion of any newly-dri or deepened well. It shall be accompanied by one copy of all electrical and radio-activity logs run on the well and a summary of all special tests conducted, including drill stem tests. All depths reported shall be measured depths. In the case of directionally drilled wells, true vertical depths shall also be reported. For multiple completions, Items 25 through 29 shall be reported for each zone. The form is to be filed in quintuplicate except on state land, where six copies are required. See Rule 1105.

INDICATE FORMATION TOPS IN CONFORMANCE WITH GEOGRAPHICAL SECTION OF STATE

Southeastern New Mexico

Northwestern New Mexico

T. Anhy _____	T. Canyon _____	T. Ojo Alamo _____	T. Penn. "E" _____
T. Salt _____	T. Strawn _____	T. Kirtland-Fruitland _____	T. Penn. "C" _____
B. Salt _____	T. Atoka _____	T. Pictured Cliffs _____	T. Penn. "T" _____
T. Yates <u>3160</u>	T. Miss _____	T. Cliff House _____	T. Leadville _____
T. 7 Rivers <u>3424</u>	T. Devonian _____	T. Menefee _____	T. Madison _____
T. Queen _____	T. Silurian _____	T. Point Lookout _____	T. Elbert _____
T. Grayburg _____	T. Montoya _____	T. Mancos _____	T. McCracken _____
T. San Andres _____	T. Simpson _____	T. Gallup _____	T. Ignacio (Ozte) _____
T. Glorieta _____	T. McKee _____	Base Greenhorn _____	T. Granite _____
T. Paddock _____	T. Ellenburger _____	T. Dakota _____	T. _____
T. Blinberry _____	T. Gr. Wash _____	T. Morrison _____	T. _____
T. Tubb _____	T. Delaware Sand _____	T. Todilto _____	T. _____
T. Drinkard _____	T. Bone Springs _____	T. Entrada _____	T. _____
T. Abo _____	T. _____	T. Wingate _____	T. _____
T. Wolfcamp _____	T. _____	T. Chinle _____	T. _____
T. Penn _____	T. _____	T. Permian _____	T. _____
T. Cisco (Bough C) _____	T. _____	T. Penn "A" _____	T. _____

OIL OR GAS SANDS OR ZONES

No. 1, from 3160 to 3294 No. 3, from _____ to _____
 No. 2, from _____ to _____ No. 4, from _____ to _____

IMPORTANT WATER SANDS

Include data on rate of water inflow and elevation to which water rose in hole.

No. 1, from _____ to _____ feet
 No. 2, from _____ to _____ feet
 No. 3, from _____ to _____ feet

LITHOLOGY RECORD (Attach additional sheet if necessary)

From	To	Thickness in Feet	Lithology	From	To	Thickness in Feet	Lithology
3160	3294	134	Sand				
3424	3470	66	Dolomite				



Submit 3 Copies
to Appropriate
District Office

State of New Mexico
Energy, Minerals and Natural Resources Department

Form C-103
Revised 1-1-89

DISTRICT I
P.O. Box 1980, Hobbs, NM 88240

DISTRICT II
P.O. Drawer DD, Artesia, NM 88210

DISTRICT III
1000 Rio Brazos Rd., Aztec, NM 87410

OIL CONSERVATION DIVISION
310 Old Santa Fe Trail, Room 206
Santa Fe, New Mexico 87503

WELL API NO. 30-025-23-144-33144

5. Indicate Type of Lease
STATE FEE

6. State Oil & Gas Lease No.
15594

7. Lease Name or Unit Agreement Name

State BF

8. Well No. 4

9. Pool name or Wildcat
West Teas Y-SR

SUNDRY NOTICES AND REPORTS ON WELLS
(DO NOT USE THIS FORM FOR PROPOSALS TO DRILL OR TO DEEPEN OR PLUG BACK TO A
DIFFERENT RESERVOIR. USE "APPLICATION FOR PERMIT"
(FORM C-101) FOR SUCH PROPOSALS.)

1. Type of Well:
OIL WELL GAS WELL OTHER

2. Name of Operator
Stevens & Tull, Inc.

3. Address of Operator
P. O. Box 11005, Midland, Texas 79702

4. Well Location
Unit Letter A : 330 Feet From The North Line and 330 Feet From The East Line

Section 16 Township 20S Range 33E NMPM Lea County

10. Elevation (Show whether DF, RKB, RT, GR, etc.)

11. Check Appropriate Box to Indicate Nature of Notice, Report, or Other Data

NOTICE OF INTENTION TO:		SUBSEQUENT REPORT OF:	
PERFORM REMEDIAL WORK <input type="checkbox"/>	PLUG AND ABANDON <input type="checkbox"/>	REMEDIAL WORK <input type="checkbox"/>	ALTERING CASING <input type="checkbox"/>
TEMPORARILY ABANDON <input type="checkbox"/>	CHANGE PLANS <input type="checkbox"/>	COMMENCE DRILLING OPNS. <input type="checkbox"/>	PLUG AND ABANDONMENT <input type="checkbox"/>
PULL OR ALTER CASING <input type="checkbox"/>		CASING TEST AND CEMENT JOB <input type="checkbox"/>	
OTHER: <input type="checkbox"/>		OTHER: Perforating <input checked="" type="checkbox"/>	

12. Describe Proposed or Completed Operations (Clearly state all pertinent details, and give pertinent dates, including estimated date of starting any proposed work) SEE RULE 1103.

12/4/95 Abandon Perfs from 3374'-3394' - No oil, trace of gas, 100 BWPD - Set CIBP @ 3365' w/ 2 SX cement on top.

12/7/95 Perforate Upper Yates from 3160' - 3294' w/ 1 spf - 23 holes.

12/8/95 Acidize Perfs w/ 1500 gals 15% NEFE - Swab Dry - No Shows.

12/11/95 Frac w/ 98,000 # 12/20 sand + 33,000 gals Borate gel.

12/12/95 Put on pump to test for productivity.

I hereby certify that the information above is true and complete to the best of my knowledge and belief.

SIGNATURE Michael G. Mooney TITLE Consulting Engineer DATE 12/14/95

TYPE OR PRINT NAME Michael G. Mooney TELEPHONE NO. 915/699/1410

(This space for State Use)

APPROVED BY ORIGINAL SIGNED BY JERRY SEXTON TITLE DISTRICT I SUPERVISOR DATE JAN 05 1996

CONDITIONS OF APPROVAL, IF ANY:

NO. OF COPIES RECEIVED		
DISTRIBUTION		
SANITARY		
FI		
U.S.G.S.		
LAND OFFICE		
OPERATOR		

NEW MEXICO OIL CONSERVATION COMMISSION

Form C-103
Supersedes Old
C-102 and C-103
Effective 1-1-65

5a. Indicate Type of Lease	
State <input checked="" type="checkbox"/>	Fee <input type="checkbox"/>
5. State Oil & Gas Lease No. B-3441	
7. Unit Agreement Name	
8. Farm or Lease Name Lea 886 State	
9. Well No. 1 2	
10. Field and Pool, or Wildcat Teas Yates 7R West	
12. County Lea	

SUNDRY NOTICES AND REPORTS ON WELLS
(DO NOT USE THIS FORM FOR PROPOSALS TO DRILL OR TO DEEPEN OR PLUG BACK TO A DIFFERENT RESERVOIR. USE "APPLICATION FOR PERMIT -" (FORM C-101) FOR SUCH PROPOSALS.)

1. OIL WELL GAS WELL OTHER- Plug & Abandon

2. Name of Operator
Atlantic Richfield Company

3. Address of Operator
P. O. Box 1710, Hobbs, New Mexico 88240

4. Location of Well
UNIT LETTER B 660 FEET FROM THE North LINE AND 1980 FEET FROM
THE East LINE, SECTION 16 TOWNSHIP 20S RANGE 33E NMPM.

15. Elevation (Show whether DF, RT, GR, etc.)
3544' GR

16. Check Appropriate Box To Indicate Nature of Notice, Report or Other Data

NOTICE OF INTENTION TO:

SUBSEQUENT REPORT OF:

PERFORM REMEDIAL WORK <input type="checkbox"/>	PLUG AND ABANDON <input type="checkbox"/>	REMEDIAL WORK <input type="checkbox"/>	ALTERING CASING <input type="checkbox"/>
TEMPORARILY ABANDON <input type="checkbox"/>	CHANGE PLANS <input type="checkbox"/>	COMMENCE DRILLING OPNS. <input type="checkbox"/>	PLUG AND ABANDONMENT <input checked="" type="checkbox"/>
PU ALTER CASING <input type="checkbox"/>	OTHER <input type="checkbox"/>	CASING TEST AND CEMENT JOBS <input type="checkbox"/>	

17. Describe Proposed or Completed Operations (Clearly state all pertinent details, and give pertinent dates, including estimated date of starting any proposed work) SEE RULE 1103.

Plugged and abandoned in the following manner:

- On 2/4/75 rigged up, installed BOP. POH w/completion assy. WIH w/bit & csg scraper to 2895'.
- Ran cmt retr on 2-3/8" tbg to 2850'.
- Squeeze cemented perms 3182-3206' w/50 sx Cl C cmt cont'g 4% gel, 8#/sk salt.
- POH w/stinger & reran tbg OE, spotted 225 sx Cl C cmt cont'g 4% gel, 8#/sk salt over salt section 2850-1200'.
- Filled hole w/heavy mud to 40' from surface.
- Spotted 10 sk cmt plug 40' to surface, installed regulation dry hole marker.

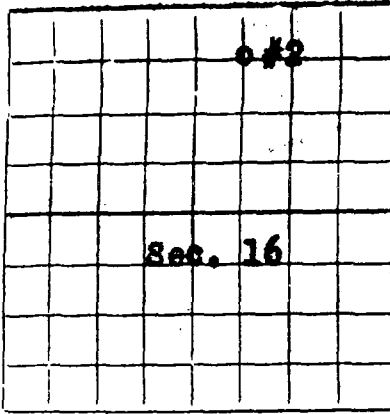
Your office to be notified when location has been cleaned & leveled & is ready for inspection.

18. I hereby certify that the information above is true and complete to the best of my knowledge and belief.

SIGNED H. J. Bernard TITLE Dist. Drlg. Supv. DATE 2/10/75

APPROVED BY W. J. Stutzman TITLE OIL & GAS ENGINEER DATE 2/10/75

CONDITIONS OF APPROVAL, IF ANY:



NEW MEXICO OIL CONSERVATION COMMISSION

Santa Fe, New Mexico

DISTRICT OFFICE 000

WELL RECORD

MI 10 29

Mail to District Office, Oil Conservation Commission, to which Form C-101 was sent not later than twenty days after completion of well. Follow instructions in Rules and Regulations of the Commission. Submit in QUINTUPLICATE. If State Land submit 6 Copies

AREA 640 ACRES
LOCATE WELL CORRECTLY

Sinclair Oil & Gas Company
(Company or Operator)

State Lea 886
(Lease)

Well No. **2**, in **NW** $\frac{1}{4}$ of **NE** $\frac{1}{4}$, of Sec. **16**, T. **20S**, R. **33E**, NMPM.
West Teas-Yates Pool, **Lea** County.

Well is **660** feet from **North** line and **1980** feet from **East** line of Section **16**. If State Land the Oil and Gas Lease No. is **R-3441**

Drilling Commenced **February 26**, 19**60**. Drilling was Completed **March 11**, 19**60**

Name of Drilling Contractor **A.W. Thompson, Inc.**
Address **Box 526, Midland, Texas**

Elevation above sea level at Top of Tubing Head **3544**. The information given is to be kept confidential until _____, 19____.

OIL SANDS OR ZONES

No. 1, from **2950** to **3274**. No. 4, from _____ to _____.
No. 2, from _____ to _____. No. 5, from _____ to _____.
No. 3, from _____ to _____. No. 6, from _____ to _____.

IMPORTANT WATER SANDS

Include data on rate of water inflow and elevation to which water rose in hole.

No. 1, from **None** to _____ feet.
No. 2, from _____ to _____ feet.
No. 3, from _____ to _____ feet.
No. 4, from _____ to _____ feet.

CASING RECORD

SIZE	WEIGHT PER FOOT	NEW OR USED	AMOUNT	KIND OF SHOE	CUT AND PULLED FROM	PERFORATIONS	PURPOSE
9-5/8"	36.40	New	1308				Surface
7"	20	New	2950				Production
2-3/8"	4.7	New	3233				Tubing

MUDDING AND CEMENTING RECORD

SIZE OF HOLE	SIZE OF CASING	WHERE SET	NO. BAGS OF CEMENT	METHOD USED	MUD GRAVITY	AMOUNT OF MUD USED
12-1/4	9-5/8	1308	914	Halliburton		
8-3/4	7	2950	465	Halliburton		

RECORD OF PRODUCTION AND STIMULATION

(Record the Process used, No. of Qts. or Gals. used, interval treated or shot.)

No Treatment

Result of Production Stimulation **No treatments - well completed natural - swabbed 39 bbls of 30.0 gravity oil in 5 hrs. GOR 180.**

Depth Cleaned Out _____

RECORD OF DRILL-STEM AND SPECIAL TESTS

If drill-stem or other special or deviation surveys were made, submit report on separate sheet and attach hereto

TOOLS USED

Rotary tools were used from 0 feet to 3360 feet, and from feet to feet.
 Cable tools were used from feet to feet, and from feet to feet.

PRODUCTION

Put to Producing March 14, 1960

OIL WELL: The production during the first 24 hours was 187 barrels of liquid of which 100% was oil; 0% was emulsion; 0% water; and 0% as sediment. A.P.I. Gravity 30.0

GAS WELL: The production during the first 24 hours was M.C.F. plus barrels of liquid Hydrocarbon. Shut in Pressure lbs.

Length of Time Shut in

PLEASE INDICATE BELOW FORMATION TOPS (IN CONFORMANCE WITH GEOGRAPHICAL SECTION OF STATE):

Southeastern New Mexico		Northwestern New Mexico	
T. Anhy.	1260	T. Devonian	T. Ojo Alamo
T. Salt		T. Silurian	T. Kirtland-Fruitland
B. XXX Tansill	2812	T. Montoya	T. Farmington
T. Yates	2950	T. Simpson	T. Pictured Cliffs
T. 7 Rivers	3257	T. McKee	T. Menefee
T. Queen		T. Ellenburger	T. Point Lookout
T. Grayburg		T. Gr. Wash.	T. Mancos
T. San Andres		T. Granite	T. Dakota
T. Glorieta		T.	T. Morrison
T. Drinkard		T.	T. Penn.
T. Tubbs		T.	T.
T. Abo		T.	T.
T. Penn.		T.	T.
T. Miss.		T.	T.

FORMATION RECORD

From	To	Thickness in Feet	Formation	From	To	Thickness in Feet	Formation
0	490	490	Redbed				
490	772	282	Redbed & Shale				
772	1044	272	Redbed & Anhydrite				
1044	1327	283	Anhydrite				
1327	2810	1483	Anhydrite & Salt				
2810	2966	156	Anhydrite				
2966	3079	113	Anhydrite, Lime & Gyp				
3079	3215	136	Sandy Lime & Gyp				
3215	3360	145	Sandy Lime & Dolomite				

(See attached sheet for record of DST)

ATTACH SEPARATE SHEET IF ADDITIONAL SPACE IS NEEDED

I hereby swear or affirm that the information given herewith is a complete and correct record of the well and all work done on it so far as can be determined from available records.

Company or Operator **Sinclair Oil & Gas Co.** Address **520 E Broadway, Hobbs, N.M.** (Date) **March 22, 1960**
 Name **Fred Burns** Position or Title **Dist. Supt.**

NO. OF COPIES RECEIVED		
DISTRIBUTION		
SANTA FE		
FILE		
G.S.		
LAND OFFICE		
OPERATOR		

NEW MEXICO OIL CONSERVATION COMMISSION

Form C-103
 Supersedes Old
 C-102 and C-103
 Effective 1-1-65

5a. Indicate Type of Lease
 State Fee
 5. State Oil & Gas Lease No.
 E-8433

SUNDRY NOTICES AND REPORTS ON WELLS

(DO NOT USE THIS FORM FOR PROPOSALS TO DRILL OR TO DEEPEN OR PLUG BACK TO A DIFFERENT RESERVOIR. USE "APPLICATION FOR PERMIT -" (FORM C-101) FOR SUCH PROPOSALS.)

1. OIL WELL <input checked="" type="checkbox"/> GAS WELL <input type="checkbox"/> OTHER- <input type="checkbox"/>	7. Unit Agreement Name
2. Name of Operator Hanson Oil Corporation	8. Form of Lease Name Atlantic State
3. Address of Operator P. O. Box 1515, Roswell, New Mexico 88201	9. Well No. #1
4. Location of Well UNIT LETTER <u>C</u> <u>990</u> FEET FROM THE <u>North</u> LINE AND <u>1980</u> FEET FROM THE <u>West</u> LINE, SECTION <u>16</u> TOWNSHIP <u>20-S</u> RANGE <u>33-E</u> N.M.P.M.	10. Field and Pool, or Willcat W. Teas Yates SR
15. Elevation (Show whether DF, RT, GR, etc.) 3542' DF	12. County Lea

15. Check Appropriate Box To Indicate Nature of Notice, Report or Other Data

NOTICE OF INTENTION TO:

SUBSEQUENT REPORT OF:

PERFORM REMEDIAL WORK <input type="checkbox"/>	PLUG AND ABANDON <input type="checkbox"/>	REMEDIAL WORK <input type="checkbox"/>	ALTERING CASING <input type="checkbox"/>
TEMPORARILY ABANDON <input type="checkbox"/>	CHANGE PLANS <input type="checkbox"/>	COMMENCE DRILLING OPNS. <input type="checkbox"/>	PLUG AND ABANDONMENT <input checked="" type="checkbox"/>
PLUG OR ALTER CASING <input type="checkbox"/>	OTHER <input type="checkbox"/>	CASING TEST AND CEMENT JOBS <input type="checkbox"/>	OTHER <input type="checkbox"/>

17. Describe Proposed or Completed Operations (Clearly state all pertinent details, and give pertinent dates, including estimated date of starting any proposed work) SEE RULE 1103.

Plugged and abandoned the above captioned well as follows:

Spotted 175 sk plug from 3110' to 1125'
 Spotted 10 sk plug from 150' to surface
 9.5#/gal mud between plugs

Installed Dry Hole Marker. Well PLUGGED & ABANDONED on 10-22-80

I hereby certify that the information above is true and complete to the best of my knowledge and belief.

SIGNED *Ernest LaBrette* TITLE Production Analyst DATE 10-24-80

APPROVED BY *Ronald Callaway* TITLE OIL & GAS INSPECTOR DATE JUL 2 1982

CONDITIONS OF APPROVAL, IF ANY:

NO. OF COPIES RECEIVED	
DISTRIBUTION	
SANTA FE	
.E	
U.S.G.S.	
LAND OFFICE	
OPERATOR	

Form C-105
Revised 1-1-65

NEW MEXICO OIL CONSERVATION COMMISSION
WELL COMPLETION OR RECOMPLETION REPORT AND LOG

11 35 AM '68

5a. Indicate Type of Lease
State Fee

5. State Oil & Gas Lease No.
N. M. 753

1a. TYPE OF WELL
OIL WELL GAS WELL DRY OTHER

b. TYPE OF COMPLETION
NEW WELL WORK OVER CHANGE IN NAME OF OPERATOR PLUG BACK DRY OTHER

2. Name of Operator
Ernest A. Hanson FROM: ERNEST A. HANSON

3. Address of Operator
P. O. Box 1515, Roswell, New Mexico TO: HANSON OIL COMPANY

4. Location of Well
Effective: January 1, 1969

7. Unit Agreement Name

8. Form or Lease Name
Atlantic States

9. Well No.
1

10. From and To Date
EFFECTIVE APRIL 15 1970

UNIT LETTER C LOCATED 990 FEET FROM THE North LINE AND 1980 FEET FROM

THE West LINE OF SEC. 16 TWP. 20-S RGE. 33-E NMPM

12. County
Lea

15. Date Spudded 12-21-60 16. Date T.D. Reached 3-1-61 17. Date Compl. (Ready to Prod.) 1-1-68 18. Elevations (DF, RKB, RT, GR, etc.) 3542' DF 19. Elev. Casinghead 3540'

20. Total Depth 3265' 21. Plug Back T.D. 3210' 22. If Multiple Compl., How Many 23. Intervals Drilled By Rotary Tools 0 - 1220' Cable Tools 1220 - 3265'

24. Producing Interval(s), of this completion - Top, Bottom, Name 3171-3185 1/2 Yates Formation 25. Was Directional Survey Made No

26. Type Electric and Other Logs Run None on plug back 27. Was Well Cored No

28. CASING RECORD (Report all strings set in well)

CASING SIZE	WEIGHT LB./FT.	DEPTH SET	HOLE SIZE	CEMENTING RECORD	AMOUNT PULLED
8-5/8"	24	1220'	10-1/2"	600 sx. circulated	None
7"	20	2955'	8"	25 sx.	2800'
4-1/2"	9.5	3260'	6-1/2"	450 sx.	None

29. LINER RECORD 30. TUBING RECORD

SIZE	TOP	BOTTOM	SACKS CEMENT	SCREEN	SIZE	DEPTH SET	PACKER SET
					2-3/8"	3120'	None

31. Perforation Record (Interval, size and number)
1 - 0.50" SF @ 3171, 3173, 3175, 3178, 3181, 3183.5 & 3185.

32. ACID, SHOT, FRACTURE, CEMENT SQUEEZE, ETC.
DEPTH INTERVAL AMOUNT AND KIND MATERIAL USED

33. PRODUCTION

Date First Production Jan. 1, 1968 Production Method (Flowing, gas lift, pumping - Size and type pump) Pumping - insert pump Well Status (Prod. or Shut-in) Producing

Date of Test 1-1-68 Hours Tested 24 Choke Size Prod'n. For Test Period Oil - Bbl. 58 Gas - MCF Water - Bbl. Trace Gas - Oil Ratio

Flow Tubing Press. Casing Pressure Calculated 24-Hour Rate Oil - Bbl. 58 Gas - MCF Water - Bbl. Trace Oil Gravity - API (Corr.) 34

34. Disposition of Gas (Sold, used for fuel, vented, etc.) vented Test Witnessed By Murdock

35. List of Attachments None

36. I hereby certify that the information shown on both sides of this form is true and complete to the best of my knowledge and belief.

SIGNED Harvey F. Scherer TITLE Exploration Manager DATE Jan. 2, 1968

RECORD OF DRILL-STEM AND SPECIAL TESTS

If drill-stem or other special tests or deviation surveys were made, submit report on separate sheet and attach hereto

TOOLS USED

Rotary tools were used from 0 feet to 1220 feet, and from _____ feet to _____ feet.
 Cable tools were used from 1220 feet to 3260 feet, and from _____ feet to _____ feet.

PRODUCTION

Put to Producing March 1, 1961 (150 BO circulated to tanks during cementing)

OIL WELL: The production during the first 24 hours was 100 barrels of liquid of which 90 % was
 was oil; _____ % was emulsion; 10 % water; and _____ % was sediment. A.P.I.
 Gravity 30

GAS WELL: The production during the first 24 hours was _____ M.C.F. plus _____ barrels of
 liquid Hydrocarbon. Shut in Pressure _____ lbs.

Length of Time Shut in _____

PLEASE INDICATE BELOW FORMATION TOPS (IN CONFORMANCE WITH GEOGRAPHICAL SECTION OF STATE):

Southeastern New Mexico

Northwestern New Mexico

T. Anhy..... <u>1218</u>	T. Devonian.....	T. Ojo Alamo.....
T. Salt..... <u>1375</u>	T. Silurian.....	T. Kirtland-Fruitland.....
B. Salt..... <u>2780</u>	T. Montoya.....	T. Farmington.....
T. Yates..... <u>2965</u>	T. Simpson.....	T. Pictured Cliffs.....
T. 7 Rivers..... <u>3207</u>	T. McKee.....	T. Menefee.....
T. Queen.....	T. Ellenburger.....	T. Point Lookout.....
T. Grayburg.....	T. Gr. Wash.....	T. Mancos.....
T. San Andres.....	T. Granite.....	T. Dakota.....
T. Glorieta.....	T.	T. Morrison.....
T. Drinkard.....	T.	T. Penn.....
T. Tubbs.....	T.	T.
T. Abo.....	T.	T.
T. Penn.....	T.	T.
T. Miss.....	T.	T.

FORMATION RECORD

From	To	Thickness in Feet	Formation	From	To	Thickness in Feet	Formation
0	1218	1218	Red beds, sd. & caliche				
1218	1375	157	Dolo. & anhydrite				
1375	2780	1405	Salt				
2780	2965	185	Dolomite				
2965	3207	242	Sand & dolomite				
3207	3260	53	Dolomite				

ATTACH SEPARATE SHEET IF ADDITIONAL SPACE IS NEEDED

I hereby swear or affirm that the information given herewith is a complete and correct record of the well and all work done on it so far as can be determined from available records.

.....March 4, 1961.....
 (Date)

Company or Operator.....Ernest A. Hanson.....

Address.....P. O. Box 852, Roswell, New Mexico.....

Name.....[Signature].....

Position or Title.....Geologist.....

Submit to Appropriate District Office
 Lease - 6 copies
 Lease - 5 copies
 DISTRICT I
 P.O. Box 1980, Hobbs, NM 88240

State of New Mexico
 Energy, Minerals and Natural Resources Department

Form C-105
 Revised 1-1-89

OIL CONSERVATION DIVISION
 P.O. Box 2088
 Santa Fe, New Mexico 87504-2088

DISTRICT II
 P.O. Drawer DD, Artesia, NM 88210

DISTRICT III
 1000 Rio Brazos Rd., Aztec, NM 87410

WELL API NO.

30-025-33286

5. Indicate Type of Lease

STATE FEE

6. State Oil & Gas Lease No.

V-2021

7. Lease Name or Unit Agreement Name

Conoco State

8. Well No.

1

9. Pool name or Wildcat

West Teas Y-Sr

WELL COMPLETION OR RECOMPLETION REPORT AND LOG

1a. Type of Well:

OIL WELL GAS WELL DRY OTHER _____

b. Type of Completion:

NEW WELL WORK OVER DEEPEN PLUG BACK DIFF RESVR OTHER _____

2. Name of Operator

Stevens & Tull, Inc.

3. Address of Operator

P.O. Box 11005, Midland, TX 79702

4. Well Location

Unit Letter C: 330 Feet From The North Line and 2310 Feet From The West Line

Section 16 Township 20S Range 33E NMPM Lea County

10. Date Spudded 7/23/96	11. Date T.D. Reached 7/30/96	12. Date Compl. (Ready to Prod.) 8/10/96	13. Elevation (DF & RKB, RT, GR, etc.) 3538 GR	14. Elev. Casinghead 3538
-----------------------------	----------------------------------	---	---	------------------------------

15. Total Depth 3311	16. Plug Back T.D. 3269	17. If Multiple Compl. How Many Zones? N/A	18. Intervals Drilled By Rotary Tools <input checked="" type="checkbox"/> Cable Tools _____
-------------------------	----------------------------	---	--

19. Producing Interval(s), of this completion - Top, Bottom, Name
3205 - 3215

20. Was Directional Survey Made
Yes

21. Log Electric and Other Logs Run
Dual Laterolog and Compensated Neutron

22. Was Well Cored
No

CASING RECORD (Report all strings set in well)

CASING SIZE	WEIGHT LB./FT.	DEPTH SET	HOLE SIZE	CEMENTING RECORD	AMOUNT PULLED
8 5/8	24	1313	12 1/4	800 sx "c"	-0-
5 1/2	15.50	3311	7 7/8	610 sx "c"	0

24. LINER RECORD				25. TUBING RECORD			
SIZE	TOP	BOTTOM	SACKS CEMENT	SCREEN	SIZE	DEPTH SET	PACKER SET
					2 7/8	3040	N/A

26. Perforation record (interval, size, and number) 3205 - 3215 20 holes 0.375"	27. ACID, SHOT, FRACTURE, CEMENT, SQUEEZE, ETC.	
	DEPTH INTERVAL 3205 - 3215	AMOUNT AND KIND MATERIAL USED 1200 gals 15% NEFE

PRODUCTION

28. Date First Production 8/10/96		Production Method (Flowing, gas lift, pumping - Size and type pump) Pumping 2 1/2 x 2" x 24'				Well Status (Prod. or Shut-in) Prod.	
Date of Test 8/12/96	Hours Tested 24	Choke Size N/A	Prod'n For Test Period	Oil - Bbl. 90	Gas - MCF 3	Water - Bbl. 680	Gas - Oil Ratio 33
Flow Tubing Press. N/A	Casing Pressure 30	Calculated 24-Hour Rate	Oil - Bbl. 90	Gas - MCF 3	Water - Bbl. 680	Oil Gravity - API - (Corr.) 36.8	

29. Position of Gas (Sold, used for fuel, vented, etc.)
vented

Test Witnessed By
Roy Peugh

30. List Attachments
Logs, Deviation Survey

31. I hereby certify that the information shown on both sides of this form is true and complete to the best of my knowledge and belief

Signature Michael G. Mooney Printed Name Michael G. Mooney Title Consulting Engineer Date 9/3/96

INSTRUCTIONS

This form is to be filed with the appropriate District Office of the Division not later than 20 days after the completion of any newly-drilled or deepened well. It shall be accompanied by one copy of all electrical and radio-activity logs run on the well and a summary of all special tests conducted, including drill stem tests. All depths reported shall be measured depths. In the case of directionally drilled wells, true vertical depths shall also be reported. For multiple completions, Items 25 through 29 shall be reported for each zone. The form is to be filed in quintuplicate except on state land, where six copies are required. See Rule 1105.

INDICATE FORMATION TOPS IN CONFORMANCE WITH GEOGRAPHICAL SECTION OF STATE

Southeastern New Mexico

Northwestern New Mexico

T. Anhy _____ 200 _____	T. Canyon _____	T. Ojo Alamo _____	T. Penn. "B" _____
T. Salt _____ 1383 _____	T. Strawn _____	T. Kirtland-Fruitland _____	T. Penn. "C" _____
B. Salt _____ 2850 _____	T. Atoka _____	T. Pictured Cliffs _____	T. Penn. "D" _____
T. Yates _____ 2972 _____	T. Miss _____	T. Cliff House _____	T. Leadville _____
T. 7 Rivers _____ 3200 _____	T. Devonian _____	T. Menefee _____	T. Madison _____
T. Queen _____	T. Silurian _____	T. Point Lookout _____	T. Elbert _____
T. Grayburg _____	T. Montoya _____	T. Mancos _____	T. McCracken _____
T. San Andres _____	T. Simpson _____	T. Gallup _____	T. Ignacio Otzt _____
T. Glorieta _____	T. McKee _____	Base Greenhorn _____	T. Granite _____
T. Paddock _____	T. Ellenburger _____	T. Dakota _____	T. _____
T. Blinebry _____	T. Gr. Wash _____	T. Morrison _____	T. _____
T. Tubb _____	T. Delaware Sand _____	T. Todilto _____	T. _____
T. Drinkard _____	T. Bone Springs _____	T. Entrada _____	T. _____
T. Abo _____	T. _____	T. Wingate _____	T. _____
T. Wolfcamp _____	T. _____	T. Chinle _____	T. _____
T. Penn _____	T. _____	T. Permian _____	T. _____
T. Cisco (Bough C) _____	T. _____	T. Penn "A" _____	T. _____

OIL OR GAS SANDS OR ZONES

No. 1, from.....2972.....to.....2994..... No. 3, from.....3082.....to.....3101.....
 No. 2, from.....3020.....to.....3054..... No. 4, from.....3205.....to.....3215.....

IMPORTANT WATER SANDS

Include data on rate of water inflow and elevation to which water rose in hole.

No. 1, from.....to.....feet.....
 No. 2, from.....to.....feet.....
 No. 3, from.....to.....feet.....

LITHOLOGY RECORD (Attach additional sheet if necessary)

From	To	Thickness in Feet	Lithology	From	To	Thickness in Feet	Lithology
1383	2850	1467	Salt				
2972	3210	238	Sand/Dolomite				
3210	3311	101	Dolomite				

SEP 1960
 Received
 Hobbs
 OGD

COPY

Submit 3 Copies to Appropriate District Office

State of New Mexico Energy, Minerals and Natural Resources Department

Form C-103 Revised 1-1-89

DISTRICT I J. Box 1980, Hobbs, NM 88240

OIL CONSERVATION DIVISION 310 Old Santa Fe Trail, Room 206 Santa Fe, New Mexico 87503

DISTRICT II P.O. Drawer DD, Artesia, NM 88210

DISTRICT III 1000 Rio Brazos Rd., Aztec, NM 87410

WELL API NO. 30-025-31856
5. Indicate Type of Lease STATE [x] FEE []
6. State Oil & Gas Lease No.
7. Lease Name or Unit Agreement Name Anasazi "16"
8. Well No. 1
9. Pool name or Wildcat West Teas Bone Springs
10. Elevation (Show whether DF, RKB, RT, GR, etc.) 3539 GR

SUNDRY NOTICES AND REPORTS ON WELLS (DO NOT USE THIS FORM FOR PROPOSALS TO DRILL OR TO DEEPEN OR PLUG BACK TO A DIFFERENT RESERVOIR. USE "APPLICATION FOR PERMIT" (FORM C-101) FOR SUCH PROPOSALS.)

1. Type of Well: OIL WELL [] GAS WELL [] OTHER SWD
2. Name of Operator Stevens & Tull, Inc.
3. Address of Operator P.O. Box 11005, Midland, TX 79702
4. Well Location Unit Letter G : 1730 Feet From The North Line and 1980 Feet From The East Line
Section 16 Township 20S Range 33E NMPM Lea County
10. Elevation (Show whether DF, RKB, RT, GR, etc.) 3539 GR

11. Check Appropriate Box to Indicate Nature of Notice, Report, or Other Data
NOTICE OF INTENTION TO:
FORM REMEDIAL WORK [] PLUG AND ABANDON []
TEMPORARILY ABANDON [] CHANGE PLANS []
PULL OR ALTER CASING []
OTHER: []
SUBSEQUENT REPORT OF:
REMEDIAL WORK [] ALTERING CASING []
COMMENCE DRILLING OPNS. [] PLUG AND ABANDONMENT []
CASING TEST AND CEMENT JOB [x]
OTHER: []

12. Describe Proposed or Completed Operations (Clearly state all pertinent details, and give pertinent dates, including estimated date of starting any proposed work) SEE RULE 1103.

7/18/97 - Run mechanical integrity test. Pressure up on casing/tubing annulus to 750 psi - held pressure for 15 minutes. Test was witnessed by Gary Wink - NMOCD - the chart was taken by NMOCD for files.

I hereby certify that the information above is true and complete to the best of my knowledge and belief.

SIGNATURE [Signature] TITLE Consulting Engineer DATE 7/31/97

FE OR PRINT NAME Michael G. Mooney TELEPHONE NO. 915/699-1410

(This space for State Use)

APPROVED BY TITLE DATE

CONDITIONS OF APPROVAL, IF ANY:

Submit 3 Copies
to Appropriate
District Office

State of New Mexico
Energy, Minerals and Natural Resources Department

Form C-103
Revised 1-1-89

DISTRICT I
P.O. Box 1980, Hobbs, NM 88240

OIL CONSERVATION DIVISION
310 Old Santa Fe Trail, Room 206
Santa Fe, New Mexico 87503

DISTRICT II
P.O. Drawer DD, Artesia, NM 88210

DISTRICT III
1000 Rio Brazos Rd., Aztec, NM 87410

WELL API NO. 30-025-31856
5. Indicate Type of Lease STATE <input checked="" type="checkbox"/> FEE <input type="checkbox"/>
6. State Oil & Gas Lease No. E-3441
7. Lease Name or Unit Agreement Name Anasazi 16 State
8. Well No. 1
9. Pool name or Wildcat Wildcat Bone Springs
10. Elevation (Show whether DF, RKB, RT, GR, etc.) 3539'GL/3557'KB

SUNDRY NOTICES AND REPORTS ON WELLS
(DO NOT USE THIS FORM FOR PROPOSALS TO DRILL OR TO DEEPEN OR PLUG BACK TO A DIFFERENT RESERVOIR. USE "APPLICATION FOR PERMIT" (FORM C-101) FOR SUCH PROPOSALS.)

1. Type of Well:
OIL WELL GAS WELL OTHER

2. Name of Operator
Snyder Ranch, Inc.

3. Address of Operator
P.O. Box 2158 Hobbs, New Mexico 88240

4. Well Location
Unit Letter G : 1730 Feet From The North Line and 1980 Feet From The East Line
Section 16 Township 20 S Range 33 E NMPM Lea County

11. Check Appropriate Box to Indicate Nature of Notice, Report, or Other Data

NOTICE OF INTENTION TO:	SUBSEQUENT REPORT OF:
PERFORM REMEDIAL WORK <input type="checkbox"/>	REMEDIAL WORK <input type="checkbox"/>
PLUG AND ABANDON <input type="checkbox"/>	ALTERING CASING <input type="checkbox"/>
TEMPORARILY ABANDON <input type="checkbox"/>	COMMENCE DRILLING OPNS. <input type="checkbox"/>
CHANGE PLANS <input type="checkbox"/>	PLUG AND ABANDONMENT <input type="checkbox"/>
PULL OR ALTER CASING <input type="checkbox"/>	CASING TEST AND CEMENT JOB <input type="checkbox"/>
OTHER: <input type="checkbox"/>	OTHER: Not to P & A. Put well on pump <input checked="" type="checkbox"/>

12. Describe Proposed or Completed Operations (Clearly state all pertinent details, and give pertinent dates, including estimated date of starting any proposed work) SEE RULE 1103.

** Mitchell Energy sent an Intent to P/A dated 12-7-93.
Snyder Ranches bought the well & decided to put well on production as follows:

- 11-3-94 MI & RU rental Equipment. POOH w/ Rods, pmp & tbg.
- 11-4-94 GIH w/ 2 7/8" tbg to 5000'. Set anchor. ND bop. NU wellhead.
- 11-5-95 Put well on production. Test well for Economics.

I hereby certify that the information above is true and complete to the best of my knowledge and belief.
SIGNATURE [Signature] TITLE Agent DATE 3-22-95
TYPE OR PRINT NAME N.M. Young TELEPHONE NO. _____

(... space for State Use)
ORIGINAL SIGNED BY GARY WINK TITLE FIELD REP. II DATE MAR 27 1995
APPROVED BY _____ DATE _____
CONDITIONS OF APPROVAL, IF ANY: _____

myP

Submit to Appropriate
District Office
State Lease - 6 copies
Fee Lease - 5 copies

TRICT I
Box 1980, Hobbs, NM 88240

DISTRICT II
P.O. Drawer DD, Artesia, NM 88210

DISTRICT III
1000 Rio Brazos Rd., Aztec, NM 87410

State of New Mexico
Energy, Minerals and Natural Resources Department

Form C-105
Revised 1-1-89

OIL CONSERVATION DIVISION
P.O. Box 2088
Santa Fe, New Mexico 87504-2088

WELL API NO.
30-025-31856

5. Indicate Type of Lease
STATE FEE

6. State Oil & Gas Lease No.
E-3441

WELL COMPLETION OR RECOMPLETION REPORT AND LOG

1a. Type of Well: OIL WELL GAS WELL DRY OTHER _____
b. Type of Completion: NEW WELL WORK OVER DEEPEN PLUG BACK DIFF RESVR OTHER _____

7. Lease Name or Unit Agreement Name
Anasazi 16 State #1

2. Name of Operator
Snyder Ranch, Inc.

8. Well No.
1

3. Address of Operator
P.O. Box 2158 Hobbs, New Mexico 88240

9. Pool name or Wildcat
WildCat Bone Springs

4. Well Location
Unit Letter G : 1730 Feet From The North Line and 1980 Feet From The East Line
Section 16 Township 20 S Range 33 E NMPM Lea County

10. Date Spudded 5-28-93 11. Date T.D. Reached 7-5-93 12. Date Compl. (Ready to Prod.) 11-5-94 13. Elevations (DF & RKB, RT, GR, etc.) 3557' KB 14. Elev. Casinghead 3539'

15. Total Depth 13858 16. Plug Back T.D. 11558' 17. If Multiple Compl. How Many Zones? _____ 18. Intervals Drilled By Rotary Tools all Cable Tools _____

19. Producing Interval(s), of this completion - Top, Bottom, Name
9306-9352' Bone Springs. 20. Was Directional Survey Made NO

21. Were Electric and Other Logs Run
DLL/Micro & D-N/ w/GR 22. Was Well Cored NO

23. **CASING RECORD (Report all strings set in well)**

CASING SIZE	WEIGHT LB/FT.	DEPTH SET	HOLE SIZE	CEMENTING RECORD	AMOUNT PULLED
20	94	497	26	900 sks	none
13 3/8	68	2964	17 1/2	2100 sks	none
8 5/8	32	5299	12 1/4	1150 sks	none
5 1/2	17	13858	7 7/8	1200 sks	none

24. **LINER RECORD** 25. **TUBING RECORD**

SIZE	TOP	BOTTOM	SACKS CEMENT	SCREEN	SIZE	DEPTH SET	PACKER SET
					2 7/8	5000	5000 (TAC)

26. Perforation record (interval, size, and number)
9306-9352 (93 Holes)

27. ACID, SHOT, FRACTURE, CEMENT, SQUEEZE, ETC.
DEPTH INTERVAL AMOUNT AND KIND MATERIAL USED

28. **PRODUCTION**

Date First Production 11-6-94 Production Method (Flowing, gas lift, pumping - Size and type pump) Rod Pump (2 1/2 x 1 1/2) Well Status (Prod. or Shut-in) Producing

Date of Test 1-15-95 Hours Tested 24 Choke Size n/a Prod'n For Test Period _____ Oil - Bbl. 2.5 Gas - MCF TSTM Water - Bbl. 1 Gas - Oil Ratio n/a

Flow Tubing Press. n/a Casing Pressure n/a Calculated 24-Hour Rate _____ Oil - Bbl. 2.5 Gas - MCF TSTM Water - Bbl. 1 Oil Gravity - API - (Corr.) 35

Disposition of Gas (Sold, used for fuel, vented, etc.) Used on lease (if any). Test Witnessed By N.M. Young

30. List Attachments
C-104 & c-103

31. I hereby certify that the information shown on both sides of this form is true and complete to the best of my knowledge and belief

Signature A.M. Young Printed Name N.M. Young Title Agent Date 3-22-95

INSTRUCTIONS

This form is to be filed with the appropriate District Office of the Division not later than 20 days after the completion of an newly-drilled or deepened well. It shall be accompanied by one copy of all electrical and radio-activity logs run on the well and a summary of all special tests conducted, including drill stem tests. All depths reported shall be measured depths. In the case of directionally drilled wells, true vertical depths shall also be reported. For multiple completions, Items 25 through 29 shall be reported for each zone. The form is to be filed in quintuplicate except on state land, where six copies are required. See Rule 1105.

INDICATE FORMATION TOPS IN CONFORMANCE WITH GEOGRAPHICAL SECTION OF STATE

Southeastern New Mexico

Northwestern New Mexico

T. Anhy _____	T. Canyon _____	T. Ojo Alamo _____	T. Penn. "B" _____
T. Salt _____	T. Strawn <u>12300</u>	T. Kirtland-Fruitland _____	T. Penn. "C" _____
T. Salt _____	T. Atoka <u>12860</u>	T. Pictured Cliffs _____	T. Penn. "D" _____
T. Yates _____	T. Miss _____	T. Cliff House _____	T. Leadville _____
T. 7 Rivers _____	T. Devonian _____	T. Menefee _____	T. Madison _____
T. Queen _____	T. Silurian _____	T. Point Lookout _____	T. Elbert _____
T. Grayburg _____	T. Montoya _____	T. Mancos _____	T. McCracken _____
T. San Andres <u>5178</u>	T. Simpson _____	T. Gallup _____	T. Ignacio Otzte _____
T. Glorieta _____	T. McKee _____	Base Greenhorn _____	T. Granite _____
T. Paddock _____	T. Ellenburger _____	T. Dakota _____	T. _____
T. Blinebry _____	T. Gr. Wash _____	T. Morrison _____	T. _____
T. Tubb _____	T. Delaware Sand <u>5468</u>	T. Todilto _____	T. _____
T. Drinkard _____	T. Bone Springs <u>8241</u>	T. Entrada _____	T. _____
T. Abo _____	T. _____	T. Wingate _____	T. _____
T. Wolfcamp <u>11600</u>	T. _____	T. Chinle _____	T. _____
T. Penn _____	T. _____	T. Permian _____	T. _____
T. Cisco (Bough C) _____	T. _____	T. Penn "A" _____	T. _____

OIL OR GAS SANDS OR ZONES

No. 1, from.....to..... No. 3, from.....to.....
 No. 2, from.....to..... No. 4, from.....to.....

IMPORTANT WATER SANDS

Include data on rate of water inflow and elevation to which water rose in hole.

No. 1, from.....to.....feet.....
 No. 2, from.....to.....feet.....
 No. 3, from.....to.....feet.....

LITHOLOGY RECORD (Attach additional sheet if necessary)

From	To	Thickness in Feet	Lithology	From	To	Thickness in Feet	Lithology

RECEIVED

MAY 23 1995
 C. J. HOBBS
 OFFICE

Submit 3 Copies
to Appropriate
District Office

State of New Mexico
Energy, Minerals and Natural Resources Department

Form C-103
Revised 1-1-89

DISTRICT I
P.O. Box 1980, Hobbs, NM 88240

DISTRICT II
P.O. Drawer DD, Artesia, NM 88210

DISTRICT III
1000 Rio Brazos Rd., Aztec, NM 87410

OIL CONSERVATION DIVISION
P.O. Box 2088
Santa Fe, New Mexico 87504-2088

RECEIVED SEP 28 1994
WELL API NO.
30-02501740

5. Indicate Type of Lease
STATE FEE

6. State Oil & Gas Lease No.
E-3441

SUNDRY NOTICES AND REPORTS ON WELLS
(DO NOT USE THIS FORM FOR PROPOSALS TO DRILL OR TO DEEPEN OR PLUG BACK TO A
DIFFERENT RESERVOIR. USE "APPLICATION FOR PERMIT"
(FORM C-101) FOR SUCH PROPOSALS.)

7. Lease Name or Unit Agreement Name

State BF

1. Type of Well:
OIL WELL GAS WELL OTHER

8. Well No. 1

2. Name of Operator
Stevens & Tull, Inc.

9. Pool name or Wildcat
West Teas Y-SR

3. Address of Operator
P. O. Box 11005, Midland, Texas 79702

4. Well Location
Unit Letter G : 1980 Feet From The North Line and 1980 Feet From The East Line
Section 16 Township 20S Range 33E NMPM County

10. Elevation (Show whether DF, RKB, RT, GR, etc.)
3536 GR

11. Check Appropriate Box to Indicate Nature of Notice, Report, or Other Data

NOTICE OF INTENTION TO:		SUBSEQUENT REPORT OF:	
PERFORM REMEDIAL WORK <input type="checkbox"/>	PLUG AND ABANDON <input type="checkbox"/>	REMEDIAL WORK <input checked="" type="checkbox"/>	ALTERING CASING <input type="checkbox"/>
EMPORARILY ABANDON <input type="checkbox"/>	CHANGE PLANS <input type="checkbox"/>	COMMENCE DRILLING OPNS. <input type="checkbox"/>	PLUG AND ABANDONMENT <input type="checkbox"/>
PULL OR ALTER CASING <input type="checkbox"/>		CASING TEST AND CEMENT JOB <input type="checkbox"/>	
OTHER: <input type="checkbox"/>		OTHER: Add Perforations <input checked="" type="checkbox"/>	

12. Describe Proposed or Completed Operations (Clearly state all pertinent details, and give pertinent dates, including estimated date of starting any proposed work) SEE RULE 1103.

9/7/94 - Set CIBP at 3120' - Re-perforate from 3090-3107 - 1 SPF 17 holes and 2989'-3006' - 1 SPF 34 holes.

9/9/94 - Frac (3090'-3107') with 11,800 gallons gel and 30,000 #12/20 sand, no acid.

9/10/94 - Frac (2989'-3006') with 30,000 gallons gel and 60,000 #12/20 sand, no acid.

9/22/94 - Recovering frac load - ready to potential.

I hereby certify that the information above is true and complete to the best of my knowledge and belief.

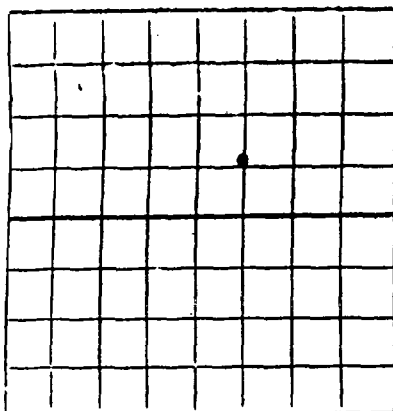
SIGNATURE Michael H. Mooney TITLE Engineer DATE 9/22/94

TYPE OR PRINT NAME _____ TELEPHONE NO. _____

(This space for State Use) ORIGINAL SIGNED BY JERRY SEXTON
DISTRICT I SUPERVISOR

APPROVED BY _____ TITLE _____ DATE SEP 27 1994

CONDITIONS OF APPROVAL, IF ANY:



AREA 640 ACRES
LOCATE WELL CORRECTLY

DUPLICATE

NEW MEXICO OIL CONSERVATION COMMISSION

Santa Fe, New Mexico

WELL RECORD 16-20-33

Mail to District Office, Oil Conservation Commission, to which Form C-101 was sent not later than twenty days after completion of well. Follow instructions in Rules and Regulations of the Commission. Submit in **QUINTUPLICATE**. If State Land submit 6 Copies

..... Cities Service Oil Co. State RF
 (Company or Operator) (Lease)
 Well No. 1, in SW 1/4 of NE 1/4, of Sec. 16, T. 20, R. 33, NMPM.
Teas Pool, Lea County.
 Well is 1980 feet from North line and 1980 feet from East line
 of Section 16-20-33. If State Land the Oil and Gas Lease No. is E 3441
 Drilling Commenced May 3, 19 60 Drilling was Completed May 16, 19 60
 Name of Drilling Contractor Cactus Drilling Co.
 Address 905 South Cecil, Hobbs, New Mexico
 Elevation above sea level at Top of Tubing Head 3543 The information given is to be kept confidential until
, 19

OIL SANDS OR ZONES

No. 1, from 3096 to 3202 No. 4, from - to -
 No. 2, from - to - No. 5, from - to -
 No. 3, from - to - No. 6, from - to -

IMPORTANT WATER SANDS

Include data on rate of water inflow and elevation to which water rose in hole.

No. 1, from - to - feet. -
 No. 2, from - to - feet. -
 No. 3, from - to - feet. -
 No. 4, from - to - feet. -

CASING RECORD

SIZE	WEIGHT PER FOOT	NEW OR USED	AMOUNT	KIND OF SHOE	CUT AND PULLED FROM	PERFORATIONS	PURPOSE
9 5/8"	32.3-36	New	1223.45	Baker	-	-	Surface
7"	20	New-used	2961.50	Baker	-	-	Surface
5"	13-15	New	347.55	Brown	-	(6) 3166'-3208.5' (40) 3096'-3106' (32) 3194'-3202'	Production

MUDDING AND CEMENTING RECORD

SIZE OF HOLE	SIZE OF CASING	WHERE SET	NO. SACKS OF CEMENT	METHOD USED	MUD GRAVITY	AMOUNT OF MUD USED
12 1/2"	9 5/8"	1236.45	600	Plug	-	-
8 3/4"	7"	2969.50	800	Plug	-	-
6 1/8"	5"	3274.82	50	Plug	-	-

RECORD OF PRODUCTION AND STIMULATION

(Record the Process used, No. of Qts. or Gals. used, interval treated or shot.)

(1) Acidized w/500 gallon-fraced w/5000 gal. & 5000 pound sand
 (2) Acidized w/500 gallon-fraced w/5000 gal. & 5000 pounds sand
 (3) Acidized w/500 gallon 25% acid; 1000 gallon retarded acid; 10,000
 gallon & 10,000 pound sand
 Result of Production Stimulation (1) recovered load; (2) recovered load; (3) recovered load
 Pumped potential 51.04 barrels oil, 28.71 barrels water, 24 hrs.
 36" stroke, 14S, P.M., GORTSTM Gr. 33° Depth Cleaned Out 3202'

RECORD OF DRILL-STEM AND SPECIAL TESTS

If drill-stem or other special or deviation surveys were made, submit report separate sheet and attach hereto

TOOLS USED

Rotary tools were used from 0 feet to 3278 feet, and from _____ feet to _____ feet.
 Cable tools were used from _____ feet to _____ feet, and from _____ feet to _____ feet.

PRODUCTION

Put to Producing July 24, 19 60.

OIL WELL: The production during the first 24 hours was 79.75 barrels of liquid of which 64 % was oil; _____ % was emulsion; 36 % water; and _____ % was sediment. A.P.I. Gravity 33° @ 60

GAS WELL: The production during the first 24 hours was _____ M.C.F. plus _____ barrels of liquid Hydrocarbon. Shut in Pressure _____ lbs.

Length of Time Shut in _____

PLEASE INDICATE BELOW FORMATION TOPS (IN CONFORMANCE WITH GEOGRAPHICAL SECTION OF STATE):

Southeastern New Mexico		Northwestern New Mexico	
T. Anhy. <u>1257 + 2292</u>	T. Devonian	T. Ojo Alamo	
T. Salt	T. Silurian	T. Kirtland-Fruitland	
B. Salt <u>Base 2805 + 744</u>	T. Montoya	T. Farmington	
T. Yates <u>2982 + 567</u>	T. Simpson	T. Pictured Cliffs	
T. 7 Rivers (Dolo.) <u>3266 + 283</u>	T. McKee	T. Menefee	
T. Queen	T. Ellenburger	T. Point Lookout	
T. Grayburg	T. Gr. Wash.	T. Mancos	
T. San Andres	T. Granite	T. Dakota	
T. Glorieta	T.	T. Morrison	
T. Drinkard	T.	T. Penn.	
T. Tubbs	T.	T.	
T. Abo	T.	T.	
T. Penn.	T.	T.	
T. Miss.	T.	T.	

FORMATION RECORD

From	To	Thickness in Feet	Formation	From	To	Thickness in Feet	Formation
0	41	41	Sand, Surface Rock				
41	843	802	Red Bed				
843	967	124	Anhydrite				
967	1020	53	Shale				
1020	1244	2244	Anhydrite-Shale				
1244	1399	155	Anhydrite				
1399	2845	1446	Salt, Anhydrite				
2845	2951	106	Anhydrite, Gyp				
2951	3040	89	Anhydrite				
3040	3278	238	Dolomite, Sand				
			3278' = TD				
			3203' = PBD				

ATTACH SEPARATE SHEET IF ADDITIONAL SPACE IS NEEDED

I hereby swear or affirm that the information given herewith is a complete and correct record of the well and all work done on it so far as can be determined from available records.

Company or Operator Cities Service Oil Co.
 Name George M. Geyer

George M. Geyer 7-25-60
 (Date)
 Address Box 97, Hobbs, New Mexico
 Position or Title District Superintendent

Submit 3 Copies
to Appropriate
District Office

State of New Mexico
Energy, Minerals and Natural Resources Department

Form C-103
Revised 1-1-89

DISTRICT I
P.O. Box 1980, Hobbs, NM 88240

DISTRICT II
P.O. Drawer DD, Artesia, NM 88210

DISTRICT III
1000 Rio Brazos Rd., Aztec, NM 87410

OIL CONSERVATION DIVISION
P.O. Box 2088
Santa Fe, New Mexico 87504-2088

WELL API NO.	30-025-30543
5. Indicate Type of Lease	STATE <input checked="" type="checkbox"/> FEE <input type="checkbox"/>
6. State Oil & Gas Lease No.	
7. Lease Name or Unit Agreement Name	Snyder-State
8. Well No.	1
9. Pool name or Wildcat	West Teas-Yates/SR
10. Elevation (Show whether DF, RKB, RT, GR, etc.)	3550' GR

SUNDRY NOTICES AND REPORTS ON WELLS
(DO NOT USE THIS FORM FOR PROPOSALS TO DRILL OR TO DEEPEN OR PLUG BACK TO A DIFFERENT RESERVOIR. USE "APPLICATION FOR PERMIT" (FORM C-101) FOR SUCH PROPOSALS.)

1. Type of Well:
OIL WELL GAS WELL OTHER Dry Hole

2. Name of Operator
Olsen Energy Inc.

3. Address of Operator
16414 San Pedro, Suite 470, San Antonio, Tx 78232

4. Well Location
Unit Letter H : 660 Feet From The East Line and 1980 Feet From The North Line
Section 16 Township 20-S Range 33-E NMPM Lea County

11. Check Appropriate Box to Indicate Nature of Notice, Report, or Other Data

NOTICE OF INTENTION TO:	SUBSEQUENT REPORT OF:
PERFORM REMEDIAL WORK <input type="checkbox"/>	REMEDIAL WORK <input type="checkbox"/>
TEMPORARILY ABANDON <input type="checkbox"/>	ALTERING CASING <input type="checkbox"/>
PULL OR ALTER CASING <input type="checkbox"/>	COMMENCE DRILLING OPNS. <input type="checkbox"/>
OTHER: <input type="checkbox"/>	PLUG AND ABANDONMENT <input checked="" type="checkbox"/>
	CASING TEST AND CEMENT JOB <input type="checkbox"/>
	OTHER: <input type="checkbox"/>

12. Describe Proposed or Completed Operations (Clearly state all pertinent details, and give pertinent dates, including estimated date of starting any proposed work) SEE RULE 1103.

3-2-89 Log at 3429' TD

3-3-89 Run drill pipe to TD. R.U. Western. Pump 148 Sxs Class "H" w/2% CaCl₂ P.U. to 2933'. Circ. and W.O.C. 4 hrs. G.I.H. to 3057'. Did not tag cement. P.U. and circ. 2 hrs. G.I.H. Tag cement at 3271' (240' low). Pump 10 sxs Class "H" w/2% CaCl₂ & 195 sxs Class "H" w/18% salt. P.U. and W.O.C. 4 hrs. Tag cement at 2718'. Pump 195 sxs. Class "H" w/18% salt. P.U. to 2132'. Pump 195 sxs Class "H" w/18% salt. Pull up to 1576'. Pump 195 sxs Class "H" w/18% salt. Pull out of hole. W.O.C. 6 hrs. Tag cement at 801'. Lay down drill pipe. Put 10 sxs plug at surface. Cut off casing. Weld on plate and install dry hole marker.

6-12 &
6-26-89 Back-fill pits. Level and clean location. Ready for inspection.

I hereby certify that the information above is true and complete to the best of my knowledge and belief.

SIGNATURE Dick Morton TITLE Dir. & Prod. Mgr. DATE 7-12-89

TYPE OR PRINT NAME Dick Morton TELEPHONE NO. 512/496-2466

APPROVED BY [Signature] TITLE _____ DATE _____

CONDITIONS OF APPROVAL, IF ANY:

OIL & GAS INSPECTOR
AUG 18 1989

Submit to: District Office
 State Lease - 6 copies
 Fee Lease - 5 copies
 District Office
 P.O. Box 1910, Hobbs, NM 88240

State of New Mexico
 Energy, Minerals and Natural Resources Department

Form 0-105
 Revised 1-1-89

OIL CONSERVATION DIVISION
 P.O. Box 2088
 Santa Fe, New Mexico 87504-2088

DISTRICT II
 P.O. Drawer 670, Artesia, NM 88210

DISTRICT III
 1000 Rio Brazos Rd., Aztec, NM 87410

WELL API NO.
 30-025-30543

5. Indicate Type of Lease
 STATE FEE

6. State Oil & Gas Lease No.

WELL COMPLETION OR RECOMPLETION REPORT AND LOG

1a. Type of Well:
 OIL WELL GAS WELL DRY OTHER _____

b. Type of Completion:
 NEW WELL WORK OVER DEEPEN PLUG BACK DIFF RESVR OTHER _____

7. Lease Name or Unit Agreement Name
 Snyder-State

2. Name of Operator
 OLSEN ENERGY, INC

8. Well No.
 1

3. Address of Operator
 16414 San Pedro, Suite 470, San Antonio, Texas 78232

9. Pool name or Wildcat
 West Teas - Yates/SR

4. Well Location
 Unit Letter H : 660 Feet From The East Line and 1980 Feet From The North Line
 Section 16 Township 20-S Range 33-E NMPM Lea County

10. Date Spudded 2-22-89	11. Date T.D. Reached 3-1-89	12. Date Compl. (Ready to Prod.) P&A 3-3-89	13. Elevations (DF & RKB, RT, GR, etc.) 3550 GR	14. Elev. Casinghead ---
-----------------------------	---------------------------------	--	--	-----------------------------

15. Total Depth 3429	16. Plug Back T.D. ---	17. If Multiple Compl. How Many Zones? ---	18. Intervals Drilled By Rotary Tools 0-TD	Cable Tools ---
-------------------------	---------------------------	---	--	--------------------

19. Producing Interval(s), of this completion - Top, Bottom, Name

20. Was Directional Survey Made
 No

21. Electric and Other Logs Run
 Density/Neutron & DLL/MLL

22. Was Well Cored
 No

CASING RECORD (Report all strings set in well)

CASING SIZE	WEIGHT LB/FT.	DEPTH SET	HOLE SIZE	CEMENTING RECORD	AMOUNT PULLED
8 5/8"	24	1259	12 1/4	540 sxs Prem. w/3% Gel & 2% CaCl ₂ + 100 sxs Class "C" w/2% CaCl ₂	None Circ cmt

24. LINER RECORD					25. TUBING RECORD		
SIZE	TOP	BOTTOM	SACKS CEMENT	SCREEN	SIZE	DEPTH SET	PACKER SET

26. Perforation record (interval, size, and number)

27. ACID, SHOT, FRACTURE, CEMENT, SQUEEZE, ETC.	
DEPTH INTERVAL	AMOUNT AND KIND MATERIAL USED

PRODUCTION

28. Date First Production		Production Method (Flowing, gas lift, pumping - Size and type pump)				Well Status (Prod. or Shut-in)	
Date of Test	Hours Tested	Choke Size	Prod'n For Test Period	Oil - Bbl.	Gas - MCF	Water - Bbl.	Gas - Oil Ratio
Flow Tubing Press.	Casing Pressure	Calculated 24-Hour Rate	Oil - Bbl.	Gas - MCF	Water - Bbl.	Oil Gravity - API - (Corr.)	

29. Location of Gas (Sold, used for fuel, vented, etc.)

Test Witnessed By

30. List Attachments

31. I hereby certify that the information shown on both sides of this form is true and complete to the best of my knowledge and belief

Signature Dick Morton Printed Name Dick Morton Title Dr'lg & Prodn Date 7-24-89

INSTRUCTIONS

This form is to be filed with the appropriate District Office of the Division not later than 20 days after the completion of any newly-drilled or deepened well. It shall be accompanied by one copy of all electrical and radio-activity logs run on the well and a summary of all special tests conducted, including drill stem tests. All depths reported shall be measured depths. In the case of directionally drilled wells, true vertical depths shall also be reported. For multiple completions, Items 25 through 29 shall be reported for each zone. The form is to be filed in quadruplicate except on state land, where six copies are required. See Rule 1105.

INDICATE FORMATION TOPS IN CONFORMANCE WITH GEOGRAPHICAL SECTION OF STATE

Southeastern New Mexico

Northwestern New Mexico

T. Anhy _____ 1200	T. Canyon _____	T. Ojo Alamo _____	T. Penn. "F" _____
T. Salt _____ 1630	T. Strawn _____	T. Kirtland-Fruitland _____	T. Penn. "C" _____
B. Salt _____ 2910	T. Atoka _____	T. Pictured Cliffs _____	T. Penn. "I" _____
T. Yates _____ 3014	T. Miss _____	T. Cliff House _____	T. Leadville _____
T. 7 Rivers _____ 3300	T. Devonian _____	T. Menefee _____	T. Madison _____
T. Queen _____	T. Silurian _____	T. Point Lookout _____	T. Elbert _____
T. Grayburg _____	T. Montoya _____	T. Mancos _____	T. McCracken _____
T. San Andres _____	T. Simpson _____	T. Gallup _____	T. Ignacio Otzte _____
T. Glorieta _____	T. McKee _____	Base Greenhorn _____	T. Granite _____
T. Paddock _____	T. Ellenburger _____	T. Dakota _____	T. _____
T. Blinberry _____	T. Gr. Wash _____	T. Morrison _____	T. _____
T. Tubb _____	T. Delaware Sand _____	T. Todilto _____	T. _____
T. Drinkard _____	T. Bone Springs _____	T. Entrada _____	T. _____
T. Abo _____	T. _____	T. Wingate _____	T. _____
T. Wolfcamp _____	T. _____	T. Chinle _____	T. _____
T. Penn _____	T. _____	T. Permian _____	T. _____
T. Cisco (Bough C) _____	T. _____	T. Penn "A" _____	T. _____

OIL OR GAS SANDS OR ZONES

No. 1, from _____ to _____
 No. 2, from _____ to _____
 No. 3, from _____ to _____
 No. 4, from _____ to _____

IMPORTANT WATER SANDS

Include data on rate of water inflow and elevation to which water rose in hole.

No. 1, from _____ to _____ feet.
 No. 2, from _____ to _____ feet.
 No. 3, from _____ to _____ feet.

LITHOLOGY RECORD (Attach additional sheet if necessary)

From	To	Thickness in Feet	Lithology	From	To	Thickness in Feet	Lithology
0	1200	1200	Surface & Red Beds				
1200	1630	430	Anhy				
1630	2910	1280	Salt & Anhy				
2910	3040	130	Dolo & Anhy				
3040	3300	260	Sand & Dolo				
3300	3429	129	Dolo				

JUL 27 1953

Submit 3 Copies
to Appropriate
District Office

State of New Mexico
Energy, Minerals and Natural Resources Department

Form C-103
Revised 1-1-89

DISTRICT I
P.O. Box 1980, Hobbs, NM 88240

DISTRICT II
P.O. Drawer DD, Artesia, NM 88210

DISTRICT III
1000 Rio Brazos Rd., Aztec, NM 87410

OIL CONSERVATION DIVISION
P.O. Box 2088
Santa Fe, New Mexico 87504-2088

WELL API NO.
30-025-30543

5. Indicate Type of Lease
STATE FEE

6. State Oil & Gas Lease No.

SUNDRY NOTICES AND REPORTS ON WELLS
(DO NOT USE THIS FORM FOR PROPOSALS TO DRILL OR TO DEEPEN OR PLUG BACK TO A
DIFFERENT RESERVOIR. USE APPLICATION FOR PERMIT CONSERVATION DIVISION
(FORM C-101) FOR SUCH PROPOSALS.)

7. Lease Name or Unit Agreement Name
Snyder - State

1. Type of Well:
OIL WELL GAS WELL OTHER Dry Hole

8. Well No.
1

2. Name of Operator
OLSEN ENERGY, INC.

3. Address of Operator
16414 San Pedro, Suite 470, San Antonio, Texas 78232

9. Pool name or Wildcat
West Teas-Yates/SR

4. Well Location
Unit Letter H : 660 Feet From The East Line and 1980 Feet From The North Line
Section 16 Township 20-S Range 33-E NMPM Lea County

10. Elevation (Show whether DF, RKB, RT, GR, etc.)
3550' GR

11. Check Appropriate Box to Indicate Nature of Notice, Report, or Other Data

NOTICE OF INTENTION TO:		SUBSEQUENT REPORT OF:	
PERFORM REMEDIAL WORK <input type="checkbox"/>	PLUG AND ABANDON <input type="checkbox"/>	REMEDIAL WORK <input type="checkbox"/>	ALTERING CASING <input type="checkbox"/>
PROVINCIAL ABANDON <input type="checkbox"/>	CHANGE PLANS <input type="checkbox"/>	COMMENCE DRILLING OPNS. <input type="checkbox"/>	PLUG AND ABANDONMENT <input checked="" type="checkbox"/>
PULL OR ALTER CASING <input type="checkbox"/>		CASING TEST AND CEMENT JOB <input type="checkbox"/>	
OTHER: <input type="checkbox"/>		OTHER: <input type="checkbox"/>	

12. Describe Proposed or Completed Operations (Clearly state all pertinent details, and give pertinent dates, including estimated date of starting any proposed work) SEE RULE 1103.

Run drill pipe open ended to TD at 3432'. Pump 148 sxs Class "H" w/ 2% CaCl2. POOH to 2933'. Circ & WOC 4 hrs. Attempt to tag plug. Didn't tag. PU, circ & WOC 2 hrs. GIH. Tag plug at 3271' (240' low). Pump 10 sxs Class "H" w/2% CaCl2 plus 195 sxs Class "H" w/18% salt. P.U. Circ & WOC 4 hrs. Tag Plug at 2718'. Pump 195 sxs Class "H" w/18% salt. P.U. to 2132'. Pump 195 sxs Class "H" w/18% salt. P.U. to 1576'. Pump 195 sxs Class "H" w/18% salt. P.U. circ & WOC 6 hrs. Tag plug at 801' (8 5/8" casing at 1259'). POOH. Put 10 sx plug at surface. Cut 8 5/8" off 2' below G. L. Weld on plate & dry hole marker. P&A operation started 3-1-89. Complete 3-2-89. Plugging Operation witnessed by State Inspector.

I hereby certify that the information above is true and complete to the best of my knowledge and belief.
SIGNATURE Dick Morton TITLE Drilling & Production Manager DATE 3/6/89
TYPE OR PRINT NAME Dick Morton TELEPHONE NO. 512-496-2466

(This space for State Use)
ORIGINAL SIGNED BY JERRY SEXTON
DISTRICT I SUPERVISOR
APPROVED BY _____ TITLE _____ DATE MAR 13 1989

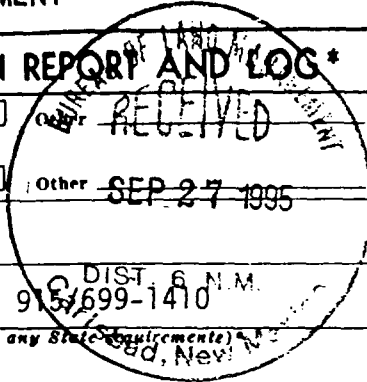
CONDITIONS OF APPROVAL, IF ANY:

UNITED STATES
DEPARTMENT OF THE INTERIOR
BUREAU OF LAND MANAGEMENT

SUBMIT IN DUPLICATE

(See other instructions on reverse side)

FOR APPROVED
OMB NO. 1004-0137
Expires: December 31, 1991



WELL COMPLETION OR RECOMPLETION REPORT AND LOG*

1. TYPE OF WELL: OIL WELL GAS WELL DRY OTHER

2. TYPE OF COMPLETION: NEW WELL WORK OVER DEEP-EN FLOR BACK DIFF. REVR. Other

3. NAME OF OPERATOR: Stevens & Tull, Inc.

4. ADDRESS AND TELEPHONE NO.: P. O. Box 11005, Midland, TX 79702 915/699-1410

5. LOCATION OF WELL (Report location clearly and in accordance with any State requirements):
At surface 2310' FSL & 990' FEL
At top prod. interval reported below
At total depth 2310' FSL & 990' FEL

6. LEASE DESIGNATION AND SERIAL NO.: NM89889

7. IF INDIAN, ALLOTTEE OR TRIBE NAME: N/A

8. UNIT AGREEMENT NAME: N/A

9. FARM OR LEASE NAME, WELL NO.: Federal 9-7

10. APIWELL NO.: 30-025-33004

11. FIELD AND POOL, OR WILDCAT: West Teas, Y-SR

12. SEC., T., R., M., OR BLOCK AND SURVEY OR AREA: Sec. 9, T-20S, R-33E

13. COUNTY OR PARISH: Lea

14. STATE: New Mexico

14. PERMIT NO. DATE ISSUED: 6/21/95

15. DATE SPUDDED: 8/28/95

16. DATE T.D. REACHED: 9/5/95

17. DATE COMPL. (Ready to prod.): 9/16/95

18. ELEVATIONS (DF, RKB, BT, GR, ETC.): 3548 GR

19. ELEV. CASINGHEAD: 3548

20. TOTAL DEPTH, MD & TVD: 3435

21. PLUG, BACK T.D., MD & TVD: 3304

22. IF MULTIPLE COMPL., HOW MANY? →

23. INTERVALS DRILLED BY: →

24. ROTARY TOOLS: X

25. CABLE TOOLS:

26. PRODUCING INTERVAL(S), OF THIS COMPLETION—TOP, BOTTOM, NAME (MD AND TVD): 3290'-3296' Seven Rivers

27. WAS DIRECTIONAL SURVEY MADE: Yes

28. TYPE ELECTRIC AND OTHER LOGS RUN: Dual Laterolog, Litho Density

29. WAS WELL CORED: No

29. CASING RECORD (Report all strings set in well)

CASING SIZE/GRADE	WEIGHT, LB./FT.	DEPTH SET (MD)	HOLE SIZE	TOP OF CEMENT, CEMENTING RECORD	AMOUNT PULLED
8 5/8	24	1310	12 1/4	Surface- 800 SX "C"	-0-
5 1/2	15.50	3425	7 7/8	Surface-635 SX "C"	-0-

29. LINER RECORD

SIZE	TOP (MD)	BOTTOM (MD)	BACKS CEMENT*	SCREEN (MD)

30. TUBING RECORD

SIZE	DEPTH SET (MD)	PACKER SET (MD)
2 3/8	3200	None

31. PERFORATION RECORD (Interval, size and number)

3290'-3296', 24 hole 0.410"

32. ACID, SHOT, FRACTURE, CEMENT SQUEEZE, ETC.

DEPTH INTERVAL (MD)	AMOUNT AND KIND OF MATERIAL USED
3290-3296	750 gal 20% gel acid

33. PRODUCTION

DATE FIRST PRODUCTION: 9/16/95

PRODUCTION METHOD (Flowing, gas lift, pumping—size and type of pump): Pumping 2 X 1 1/2 X 16' RWBC

WELL STATUS (Producing or shut-in): Producing

DATE OF TEST	HOURS TESTED	CHOKED SIZE	PROD'N. FOR TEST PERIOD	OIL—BBL.	GAS—MCF.	WATER—BBL.	GAS-OIL RATIO
9/17/95	24	N/A	→	92	3	210	33

FLOW TUBING PRESS.	CASING PRESSURE	CALCULATED 24-HOUR RATE	OIL—BBL.	GAS—MCF.	WATER—BBL.	OIL GRAVITY-APT (CORR.)
N/A	50	→	92	3	210	32.6

34. DISPOSITION OF GAS (Sold, used for fuel, vented, etc.): Sold - GPM

TEST WITNESSED BY: Roy Paugh

35. LIST OF ATTACHMENTS: Electric Logs, Deviation Survey

36. I hereby certify that the foregoing and attached information is complete and correct as determined from all available records

SIGNED: Michael P. J. Murney TITLE: Engineer DATE: 9/26/95

*(See Instructions and Spaces for Additional Data on Reverse Side)

37. SUMMARY OF POROUS ZONES: (Show all important zones of porosity and contents thereof; cored intervals; and all drill-stem, tests, including depth interval tested, cushion used, time tool open, flowing and shut-in pressures, and recoveries):

FORMATION	TOP	BOTTOM	DESCRIPTION, CONTENTS, ETC.	NAME	TOP	
					MEAS. DEPTH	TRUE DEPTH
				Tansil Yates Seven Rivers	2894 3039 3296	

38.

GEOLOGIC MARKERS

UNITED STATES DEPARTMENT OF THE INTERIOR
BUREAU OF LAND MANAGEMENT

SUBMIT IN DUPLICATE

Form approved.
Budget Bureau No. 1004-0137
Expires August 31, 1985

RECEIVED
APR 7 11 08 AM '88
CARLSB...
AREA...

WELL COMPLETION OR RECOMPLETION REPORT AND LOG *

1. TYPE OF WELL: OIL WELL GAS WELL DRY Other

2. NAME OF OPERATOR: Grover-McKinney Oil Company

3. ADDRESS OF OPERATOR: P O Box 3666, Midland, Texas 79702

4. LOCATION OF WELL (Report location clearly and in accordance with any State requirements)*
At surface: 1980' FSL & 2310' FEL
At top prod. interval reported below
At total depth

5. LEASE DESIGNATION AND SERIAL NO.: NM-51844

6. IF INDIAN, ALLOTTEE OR TRIBE NAME

7. UNIT AGREEMENT NAME

8. FARM OR LEASE NAME: Federal

9. WELL NO.: 3

10. FIELD AND POOL, OR WILDCAT: West Teas SR (Yates)

11. SEC., T., R., M., OR BLOCK AND SURVEY OR AREA: Section 9, T20S, R33E

14. PERMIT NO. DATE ISSUED

15. DATE SPUDDED: 2-26-88

16. DATE T.D. REACHED: 3-4-88

17. DATE COMPL. (Ready to prod.): 3-25-88

18. ELEVATIONS (DF, RKB, RT, GR, ETC.): 3540.5' GR

19. ELEV. CASINGHEAD

20. TOTAL DEPTH, MD & TVD: 3425'

21. PLUG, BACK T.D., MD & TVD: 3380'

22. IF MULTIPLE COMPL., HOW MANY*

23. INTERVALS DRILLED BY: ROTARY TOOLS X CABLE TOOLS

24. PRODUCING INTERVAL(S), OF THIS COMPLETION—TOP, BOTTOM, NAME (MD AND TVD)*: 3022-3100 (Yates)

25. WAS DIRECTIONAL SURVEY MADE: No

26. TYPE ELECTRIC AND OTHER LOGS RUN: ZDL/CN/GR/CAL, DLL/GR, CBL

27. WAS WELL CORED: No

29. CASING RECORD (Report all strings set in well)

CASING SIZE	WEIGHT, LB./FT.	DEPTH SET (MD)	HOLE SIZE	CEMENTING RECORD	AMOUNT PULLED
8 5/8"	24#	1218'	12 1/4"	500 sx Halliburton Lite & 250 sx P+	circulated
4 1/2"	10.5#	3420'	7 7/8"	450 sx Halliburton Lite & 200 sx P+	TOC @ 600'

29. LINER RECORD

SIZE	TOP (MD)	BOTTOM (MD)	SACKS CEMENT*	SCREEN (MD)	30. TUBING RECORD
					SIZE: 2 3/8" DEPTH SET (MD): 3025' PACKER SET (MD):

31. PERFORATION RECORD (Interval, size and number): 3022, 24, 34, 36, 40, 43, 45, 50, 86, 88, 92, 94 & 3100' w/2 JSPF

32. ACID, SHOT, FRACTURE, CEMENT SQUEEZE, ETC.

DEPTH INTERVAL (MD)	AMOUNT AND KIND OF MATERIAL USED
3022-3100'	Spotted 500 gals 15% NEFE w/ 38 balls & fraced w/375 bbbs fluid, 75 tons CO2, 42,000# 20/40 sand & 30,800# 12/20 sand.

33. PRODUCTION

DATE FIRST PRODUCTION	PRODUCTION METHOD (Flowing, gas lift, pumping—size and type of pump)	WELL STATUS (Producing or shut-in)					
3-25-88	Pumping - 1 1/4" Rod	Producing					
DATE OF TEST	HOURS TESTED	CHOKE SIZE	PROD'N. FOR TEST PERIOD	OIL—BBL.	GAS—MCF.	WATER—BBL.	GAS-OIL RATIO
3-30-88	24	-	→	80	TSTM	5	-
FLOW. TUBING PRESS.	CASING PRESSURE	CALCULATED 24-HOUR RATE	OIL—BBL.	GAS—MCF.	WATER—BBL.	OIL GRAVITY-API (CORR.)	
n/a	25	→	80	TSTM	5	36.0	

34. DISPOSITION OF GAS (Sold, used for fuel, vented, etc.): Used for fuel

TEST WITNESSED BY: Terrell Hansen

35. LIST OF ATTACHMENTS: 525

36. I hereby certify that the foregoing and attached information is complete and correct as determined from all available records

SIGNED: Carol Roberts TITLE: Agent DATE: April 5, 1988

*(See Instructions and Spaces for Additional Data on Reverse Side) 2 sets logs to BLM orig + 3 1 set logs w/orig to Hbbs

37. SUMMARY OF POROUS ZONES: (Show all important zones of porosity and contents thereof; cored intervals; and all drill-stem, tests, including depth interval tested, cushion used, time tool open, flowing and shut-in pressures, and recoveries):

FORMATION	TOP	BOTTOM	DESCRIPTION, CONTENTS, ETC.	NAME	TOP	
					MEAS. DEPTH	TRUE VERT. DEPTH
Yates	3014	3165	Recovered 10' oil, 80' water (drilling mud 155,000 chl, top tool 156,500 chl, Sampler 155,800 chl) Oil Gravity 34, 55°.	Yates	3020	+529
IHP	1570	1730	Sampler: 25 psi, 150 cc oil, .0265 CF gas, 2000 cc water. Total liquid 2150 cc.			
IFP	15	100				
FFP	29	114				
SIP	432	581				
IFP	43	114				
FFP	58	142				
SIP	1402	1576				
FHP	1570	1703				

38. GEOLOGIC MARKERS

HOBBS OFFICE
 APR 27 1988
 RECEIVED

RECEIVED MAY - 3 1997

Form 9-331
(May 1968)

UNITED STATES
DEPARTMENT OF THE INTERIOR
GEOLOGICAL SURVEY

SUBMIT IN TRIPLICATE*
(Other instruction
verse side)

Form approved.
Budget Bureau No. 42-R1424.

5. LEASE DESIGNATION AND SERIAL NO.

SLUP-10393

SUNDRY NOTICES AND REPORTS ON WELLS

(Do not use this form for proposals to drill or to deepen or plug back to a different reservoir.
Use "APPLICATION FOR PERMIT—" for such proposals.)

6. IF INDIAN, ALLOTTEE OR TRIBE NAME

7. UNIT AGREEMENT NAME

8. FARM OR LEASE NAME

Lea 6015 ARC Federal

9. WELL NO.

1

10. FIELD AND POOL, OR WILDCAT

West Teas SWDS

11. SEC., T., R., M., OR BLK. AND SURVEY OR AREA

9-T20S-R33E

12. COUNTY OR PARISH

Lea

13. STATE

N.M.

1. OIL WELL GAS WELL OTHER Plug & Abandon SWD Well

2. NAME OF OPERATOR
Atlantic Richfield Company

3. ADDRESS OF OPERATOR
P. O. Box 1710, Hobbs, New Mexico 88240

4. LOCATION OF WELL (Report location clearly and in accordance with any State requirements.*
See also space 17 below.)
At surface
660' FSL & 1980' FEL (Unit letter O)

14. PERMIT NO.

15. ELEVATIONS (Show whether DV, RT, CR, etc.)

16. Check Appropriate Box To Indicate Nature of Notice, Report, or Other Data

NOTICE OF INTENTION TO:

TEST WATER SHUT-OFF
FRACTURE TREAT
SHOOT OR ACIDIZE
REPAIR WELL
(Other)

FULL OR ALTER CASING
MULTIPLE COMPLETE
ABANDON*
CHANGE PLANS

SUBSEQUENT REPORT OF:

WATER SHUT-OFF
FRACTURE TREATMENT
SHOOTING OR ACIDIZING
(Other)

REPAIRING WELL
ALTERING CASING
ABANDONMENT*

(NOTE: Report results of multiple completion on Well Completion or Recompletion Report and Log form.)

17. DESCRIBE PROPOSED OR COMPLETED OPERATIONS (Clearly state all pertinent details, and give pertinent dates, including estimated date of starting any proposed work. If well is directionally drilled, give subsurface locations and measured and true vertical depths for all markers and zones pertinent to this work.)*

1. On 2/11/75 rigged up csg pullers & installed BOP. POH w/tbg & pkr.
2. WIH w/7" cmt retr on 2-3/8" tbg & set @ 2800'.
3. Cmt squeezed thru retr w/45 sx Cl C cmt cont'g 4% gel & 8#/sk salt. Filled hole w/9# gelled mud.
4. Spotted 225 sx Cl C cmt cont'g 4% gel & 8# salt/sk on top of retr. Checked top of cmt @ 733' from surface.
5. Spotted 10 sx Cl C cmt 40' to surface.
6. Installed dry hole marker. P&A effective 2/12/75.
7. Removed equip from location. Clean & restored location to BLM specifications.

18. I hereby certify that the foregoing is true and correct

SIGNED *[Signature]*

TITLE Dist. Drlg. Supv.

DATE 2/19/75

(This space for Federal or State office use)

APPROVED BY _____
CONDITIONS OF APPROVAL, IF ANY:

TITLE _____

DATE _____

*See Instructions on Reverse Side

**UNITED STATES
DEPARTMENT OF THE INTERIOR
GEOLOGICAL SURVEY**

SUBMIT IN DUPLICATE

(See operating instructions on reverse side)

Form approved.
Budget Bureau No. 42-R355.6.

5. LEASE DESIGNATION AND SERIAL NO.

LC 071900-A

6. IF INDIAN, ALLOTTEE OR TRIBE NAME

UNIT AGREEMENT NAME

7. FARM OR LEASE NAME

Lea 6015 ARC Federal

8. WELL NO.

10. FIELD AND POOL, OR WILDCAT

West Teas

11. SEC., T., R., M., OR BLOCK AND SURVEY OR AREA

9-T20S-R33E

12. COUNTY OR PARISH

Lea

13. STATE

New Mexico

WELL COMPLETION OR RECOMPLETION REPORT AND LOG *

1a. TYPE OF WELL: OIL WELL GAS WELL DRY Other Salt Water Disposal

b. TYPE OF COMPLETION: NEW WELL WORK OVER DEEP-EN PLUG BACK DIFF. RESVR. Other Re-entry F/SWDW

2. NAME OF OPERATOR
SINCLAIR OIL CORPORATION
Sinclair Oil Corporation merged into Atlantic Richfield Company

3. ADDRESS OF OPERATOR
P. O. Box 1920, Hobbs, New Mexico 88240
effective March 4, 1967

4. LOCATION OF WELL (Report location clearly and in accordance with any State requirements)*

At surface 660' FSL & 1980' FEL

At top prod. interval reported below

At total depth same

660' FSL & 1980' FEL

14. PERMIT NO.

DATE ISSUED

15. DATE SPUDDED

16. DATE T.D. REACHED

17. DATE COMPL. (Ready to prod.)
12-23-68

Dispose

18. ELEVATIONS (DF, REB, RT, OR, ETC.)*
3541' GR

19. ELEV. CASINGHEAD

20. TOTAL DEPTH, MD & TVD

3300'

21. PLUG, BACK T.D., MD & TVD

3240'

22. IF MULTIPLE COMPL., HOW MANY*

23. INTERVALS DRILLED BY

ROTARY TOOLS

CABLE TOOLS

0-3240'

24. PRODUCING INTERVAL(S), OF THIS COMPLETION—TOP, BOTTOM, NAME (MD AND TVD)*

Inj.
3110-3214' Yates

25. WAS DIRECTIONAL SURVEY MADE

Yes

26. TYPE ELECTRIC AND OTHER LOGS RUN

None

27. WAS WELL CORED

No

28. CASING RECORD (Report all strings set in well)

CASING SIZE	WEIGHT, LB./FT.	DEPTH SET (MD)	HOLE SIZE	CEMENTING RECORD	AMOUNT PULLED
9-5/8"OD	32.30#	1357'	12-1/4"	734 sacks circulated	None
7"OD	20#	3022'	8-3/4"	474 sacks circulated	None

29. LINER RECORD

SIZE	TOP (MD)	BOTTOM (MD)	SACKS CEMENT*	SCREEN (MD)
5"OD	2974'	3300'	50	

30. TUBING RECORD

SIZE	DEPTH SET (MD)	PACKER SET (MD)
2-3/8"OD	3103'	3103'

31. PERFORATION RECORD (Interval, size and number)

B110-17, 3122-30' w/30 1/2" holes.
B199-3214 w/2 shots per/ft.
B180-3195' w/2 - 1/2" shots per/ft.

32. ACID, SHOT, FRACTURE, CEMENT SQUEEZE, ETC.

DEPTH INTERVAL (MD)	AMOUNT AND KIND OF MATERIAL USED
3110-3214'	500 gals. N.A.
3110-3214'	2000 gals. 15% Reg. Acid

33. PRODUCTION

DATE FIRST PRODUCTION	PRODUCTION METHOD (Flowing, gas lift, pumping—size and type of pump)	WELL STATUS (Producing or shut-in)					
—SWDW	Injecting (SWDW)	Producing					
DATE OF TEST	HOURS TESTED	CHOKE SIZE	PROD'N. FOR TEST PERIOD	OIL—BSL.	GAS—MCF.	WATER—BSL.	GAS-OIL RATIO
FLOW, TUBING PRESS.	CASING PRESSURE	CALCULATED 24-HOUR RATE	OIL—BSL.	GAS—MCF.	WATER—BSL.	OIL GRAVITY-API (CORR.)	

34. DISPOSITION OF GAS (Sold, used for fuel, vented, etc.)

TEST WITNESSED BY

35. LIST OF ATTACHMENTS

36. I hereby certify that the foregoing and attached information is complete and correct as determined from all available records

SIGNED

[Signature]

TITLE

Superintendent

DATE

1-2-69

*(See Instructions and Spaces for Additional Data on Reverse Side)

1-20	1000	1000	1000
2-20	1000	1000	1000
3-20	1000	1000	1000
4-20	1000	1000	1000
5-20	1000	1000	1000
6-20	1000	1000	1000
7-20	1000	1000	1000
8-20	1000	1000	1000
9-20	1000	1000	1000
10-20	1000	1000	1000

RECEIVED

JUN 1 1960

U.S. GEOLOGICAL SURVEY
 DEPARTMENT OF THE INTERIOR
 GEOLOGICAL SURVEY

LEASE OR PERMIT TO PROSPECT

RECEIVED

LOG OF OIL OR GAS WELL

LOCATE WELL CORRECTLY

Company **Sinclair Oil & Gas Company** Address **520 E. Broadway, Hobbs, New Mexico**

Lessor or Tract **Federal Lea 6015** Field **West Texas** State **New Mexico**

Well No. **1** Sec. **8** T. **20S** R. **11E** Meridian **N10W** County **Lea**

Location **660** ft. **N** of **S** Line and **1980** ft. **W** of **E** Line of **0** Elevation **3511**

The information given herewith is a complete and correct record of the well and all work done thereon, so far as can be determined from all available records.

Signed

Date **May 25, 1960** Title **Dist. Dept.**

The summary on this page is for the condition of the well at above date.

Commenced drilling **April 13, 1960** Finished drilling **April 13, 1960**

OIL OR GAS SANDS OR ZONES

(Denote gas by G)

No. 1, from **Dry Hole** to No. 4, from _____ to _____

No. 2, from _____ to No. 5, from _____ to _____

No. 3, from _____ to No. 6, from _____ to _____

IMPORTANT WATER SANDS

No. 1, from _____ to No. 3, from _____

No. 2, from _____ to No. 4, from _____

CASING RECORD

Size casing	Weight per foot	Threads per inch	Make	Amount	Kind of shoe	Cut and pulled from	Perforated		Purpose
							From-	To-	
9-5/8	32.30	8R	555 BTAC	1357					Surface
7	20	8R	555 BTAC	1024					Intermediate
5	11.50	8R	555 BTAC	326			3110	3130	Linear

MUDDING AND CEMENTING RECORD

Size casing	Where set	Number sacks of cement	Method used	Mud gravity	Amount of mud used
9-5/8	1357	734	Halliburton		
7	3022	474	Halliburton		
5	3300	50	Halliburton		

ILLEGIBLE

PLUGS AND ADAPTERS

Heaving plug—Material _____ Length _____ Depth set _____

Adapters—Material _____ Size _____

SHOOTING RECORD

FOLD MARK

PLUGS AND ADAPTERS

Heaving plug—Material Length Depth set
 Adapters—Material Size

SHOOTING RECORD

Size	Shell used	Explosive used	Quantity	Date	Depth shot	Depth cleaned out
None						

TOOLS USED

Rotary tools were used from 0 feet to 3300 feet, and from feet to feet
 Cable tools were used from feet to feet, and from feet to feet

DATES

....., 19..... Put to producing **Dry Hole - Plugged and Abandoned May 6,** 60
 The production for the first 24 hours was barrels of fluid of which% was oil;%
 emulsion;% water; and% sediment. Gravity, °Bé.
 If gas well, cu. ft. per 24 hours Gallons gasoline per 1,000 cu. ft. of gas
 Rock pressure, lbs. per sq. in.

EMPLOYEES

....., Driller
I. A. Harris
Barfield
C. Sibley
 Driller
 Driller

FORMATION RECORD

FROM—	TO—	TOTAL FEET	FORMATION
0	160	160	Caliche & Redbed
160	600	440	Redbed
600	978	378	Redbed & Anhydrite
978	1308	330	Anhydrite & Gyp
1308	1357	49	Lime & Anhydrite
1357	2562	1205	Anhydrite & Salt
2562	3022	460	Anhydrite
3022	3300TD	278	Lime
			<u>GEOLOGICAL TOPS</u>
			Anhydrite 1262 / 2279
			Tensil 2830 / 711
			Tates 3005 / 536
FROM—	TO—	TOTAL FEET	FORMATION

Originals: USGS

cc: HFD, JM, File

FORMATION RECORD—CONTINUED

CONTAINER NO.	WELL NO.	DATE	TIME	BY

ILLEGIBLE

HISTORY OF OIL OR GAS WELL

It is of the greatest importance to have a complete history of the well. Please state in detail the dates of redrilling, together with the reasons for the work and its results. If there were any changes made in the casing, state fully, and if any casing was abandoned or left in the well, give its size and location. If the well has been dynamited, give date, size, position, and number of shots. If plugs or bridges were put in to test for water, state kind of material used, position, and results of pumping or bailing.

- 4-13-60 3300TD Reached TD of 3300, ran electric logs.
- 4-14-60 3300TD Set 326' of 5" OD liner from 2974-3300.
- 4-16-60 3300TD Jet perforated Yates 3199-3214, 3220-3232 w/2 shots per foot. Mud acid washed perfs w/500 gals. Swabbed 12 bbl load oil & 12 bbl acid water in 3 hrs, then swabbed 140 bbls formation water in 10 hrs.
- 4-17-60 Set CI retainer at 3160. Spaced perfs 3199-3214, 3220-3232 w/75 sks cement.
- 4-19-60 3294EB Filled cement to 3294. Jet perf Yates 3252-64 w/2 shots per ft. Mud acid washed w/250 gals. Swabbed 12 bbl load oil & 6 bbl acid water in 1 hr, then swabbed 3 bbls formation water per hr.
- 4-20-60 324OPB Set CI retainer at 3240, spaced perfs 3252-64 w/50 sks cement. Jet perf Yates 3199-3214 w/2 shots per ft. Mud acid washed w/250 gals. Swabbed 12 bbl load oil in 1 hr, swabbed 1/4 bbl new oil & 1/2 bbl acid water in 5 hrs.
- 4-21-60 324OPB Sandoil spaced perfs 3199-3214 w/2000 gals refined oil & 2000 lbs sand. Max Press 5300, Min Press 3900, inj rate 4.1 BPM, 10 min SIP 2600. Swabbed 3 bbls load oil & 3 bbls formation water in 12 hrs.
- 4-23-60 324OPB Sandoil spaced perfs 3199-3214 w/5000 gals refined oil & 5000 lbs sand. Max Press 6000, Min Press 4500, inj rate 5 BPM, 10 min SIP 3000.
- 4-25-60 324OPB Placed well on pump. Pumped 15 bbl load oil & 10 bbl formation water in 14 hrs.
- 4-27-60 324OPB Pumped 36 bbl load oil & 18 bbl formation water in 24 hrs.
- 4-28-60 324OPB Pumped 12 bbl load oil & 3 bbl formation water in 24 hrs.
- 4-29-60 324OPB Pumped 1 bbl load oil & 5 bbl formation water in 24 hrs.
- 5-1-60 324OPB Pumped Zero bbls load oil & 3 bbl formation water in 24 hrs.
- 5-4-60 319OPB Pulled rods & tbg. Set CI bridge plug at 3190. Jet perforated Yates 3110-17, 3122-30 w/2 shots per ft. Mud acid washed perfs w/250 gals. Swabbed 15 bbl load oil & 5 bbls acid water in 2 hrs. Swabbed 88 bbls formation water in 10 hrs. No show oil or gas.
- 5-60 319OPB Swabbed 120 bbls formation water in 8 hrs. No show oil or gas. Spotted 16 sk cement plug 1/2190-2974. Spotted 23 sk cement plug 1/2974-1300. Spotted 20 sk cement plug in collar. Set 4" rd' regulation var. PLUGGED AND ABANDONED - DRY

RECEIVED MAY - 5 1997

Form 9-331
(May 1963)

UNITED STATES DEPARTMENT OF THE INTERIOR
GEOLOGICAL SURVEY

SUBMIT IN TRI
(Other instructions
reverse side)

Form approved.
Budget Bureau No. 42-R1424.

LEASE DESIGNATION AND SERIAL NO.

LC 071900 (a)

SUNDRY NOTICES AND REPORTS ON WELLS

(Do not use this form for proposals to drill or to deepen or plug back to a different reservoir.
Use "APPLICATION FOR PERMIT—" for such proposals.)

1. OIL WELL GAS WELL OTHER Plugged & Abandoned

2. NAME OF OPERATOR
Atlantic Richfield Company

3. ADDRESS OF OPERATOR
P. O. Box 1710, Hobbs, New Mexico 88240

4. LOCATION OF WELL (Report location clearly and in accordance with any State requirements.*
See also space 17 below.)
At surface
330' FSL & 1980' FWL (Unit letter N)

6. IF INDIAN, ALLOTTEE OR TRIBE NAME

7. UNIT AGREEMENT NAME

8. FARM OR LEASE NAME
Lea 6015 ARC Federal

9. WELL NO.
2

10. FIELD AND POOL, OR WILDCAT
Teas Yates 7R West

11. SEC., T., R., M., OR BLK. AND SURVEY OR AREA
9-20S-33E

14. PERMIT NO.

15. ELEVATIONS (Show whether DF, RT, GR, etc.)
3532' DF

12. COUNTY OR PARISH
Lea

13. STATE
N.M.

16. Check Appropriate Box To Indicate Nature of Notice, Report, or Other Data

NOTICE OF INTENTION TO:

SUBSEQUENT REPORT OF:

TEST WATER SHUT-OFF
FRACTURE TREAT
SHOOT OR ACIDIZE
REPAIR WELL
(Other)

PULL OR ALTER CASING
MULTIPLE COMPLETE
ABANDON*
CHANGE PLANS

WATER SHUT-OFF
FRACTURE TREATMENT
SHOOTING OR ACIDIZING
(Other)

REPAIRING WELL
ALTERING CASING
ABANDONMENT*

(NOTE: Report results of multiple completion on Well Completion or Recompletion Report and Log form.)

17. DESCRIBE PROPOSED OR COMPLETED OPERATIONS (Clearly state all pertinent details, and give pertinent dates, including estimated date of starting any proposed work. If well is directionally drilled, give subsurface locations and measured and true vertical depths for all markers and zones pertinent to this work.)*

Plugged and abandoned well in the following manner:

On 2/9/75 installed BOP & POH w/rods & tbg. Ran 7" csg scraper to 2875'. WIH w/7" cmt retr on 2-3/8" tbg. Set @ 2735'. Unable to pump into formation w/1500#. Pulled out of retr and spotted 250 sx Cl C cmt cont'g 4% gel, 8#/sk salt on top of retr. WOC 5 hrs. Tagged top of cmt @ 1107'. Filled hole w/heavy mud-laden material 1107-40'. Spotted 10 sk cmt plug 40-surface, installed regulation dry hole marker. P&A effective 2/10/75. Clean & levelled location.

18. I hereby certify that the foregoing is true and correct

SIGNED *[Signature]*
(This space for Federal or State office use)

TITLE Dist. Drlg. Supv.

DATE 2/14/75

APPROVED BY _____
CONDITIONS OF APPROVAL, IF ANY:

TITLE _____
[Signature]

RECEIVED

U. S. LAND OFFICE Las Cruces

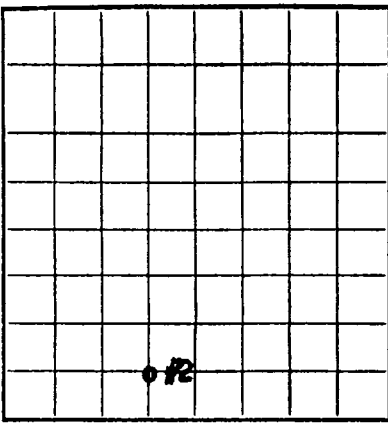
SERIAL NUMBER LC 071900-A

LEASE OR PERMIT TO PROSPECT _____

AUG 20 1963

UNITED STATES DEPARTMENT OF THE INTERIOR
GEOLOGICAL SURVEY

ILLEGIBLE



LOCATE WELL CORRECTLY

LOG OF OIL OR GAS WELL

Company Sinclair Oil & Gas Company Address 520 E. Broadway, Hobbs, New Mexico

Lessor or Tract Federal Lea 6015 ARC Field Undesignated State New Mexico

Well No. 2 Sec. 9 T. 20S R. 33E Meridian NMPM County Lea

Location 330 ft. N of S Line and 1980 ft. E of W Line of Sec. 9 Elevation 3532
(Derrick floor relative to sea level)

The information given herewith is a complete and correct record of the well and all work done thereon so far as can be determined from all available records.

Signed _____

Date August 22, 1963 Title Dist. Smt.

The summary on this page is for the condition of the well at above date.

Commenced drilling July 30, 1963 Finished drilling August 8, 1963

OIL OR GAS SANDS OR ZONES

(Denote gas by G)

No. 1, from 2978 to 330 No. 4, from _____ to _____

No. 2, from _____ to _____ No. 5, from _____ to _____

No. 3, from _____ to _____ No. 6, from _____ to _____

IMPORTANT WATER SANDS

No. 1, from _____ to _____ No. 3, from _____ to _____

No. 2, from _____ to _____ No. 4, from _____ to _____

CASING RECORD

Size casing	Weight per foot	Threads per inch	Make	Amount	Kind of shoe	Cut and pulled from	Perforated		Purpose
							From-	To-	
9-5/8	32	8R	J-40	1285					Surface Csg
7-1/2	20	8R	J-55	2950					Intermediate Csg
5	13	8R	J-55	475					Liner
2-3/8	4.7	8R	J-55	3125					Tubing

MUDDING AND CEMENTING RECORD

Size casing	Where set	Number sacks of cement	Method used	Mud gravity	Amount of mud used
9-5/8	1285	150	Halliburton		
	2950	600	Halliburton		
	fr 2875 to 3350 (Liner)	90	Halliburton		

PLUGS AND ADAPTERS

Heaving plug—Material _____ Length _____ Depth set _____

Adapters—Material _____ Size _____

SHOOTING RECORD

FOLD MARK

FOLD | MARK

9-5/8	1285	150	Halliburton
7	2950	600	Halliburton
5	fr 2875 to 3350 (liner)	90	Halliburton

PLUGS AND ADAPTERS

Heaving plug—Material Length Depth set

Adapters—Material Size

SHOOTING RECORD

Size	Shell used	Explosive used	Quantity	Date	Depth shot	Depth cleaned out

TOOLS USED

Rotary tools were used from Surface feet to 3350 feet, and from feet to feet

Cable tools were used from feet to feet, and from feet to feet

DATES

....., 19..... Put to producing August 16, 1963

The production for the first 24 hours was 60 barrels of fluid of which 97 % was oil; 0 % emulsion; 3 % water; and 0 % sediment. Gravity, °Bé. 30.0

If gas well, cu. ft. per 24 hours Gallons gasoline per 1,000 cu. ft. of gas

Rock pressure, lbs. per sq. in.

EMPLOYEES

....., Driller Driller

L.L. Fraley, Driller Roy Solomon, Driller

T.E. Bingham

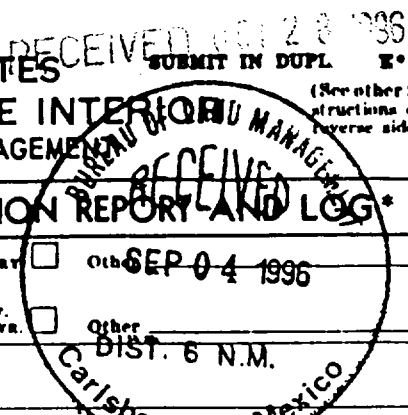
FORMATION RECORD

FROM—	TO—	TOTAL FEET	FORMATION
0	137	137	Red Bed
137	937	800	Red Bed & Rock
937	1058	121	Anhydrite
1058	1226	168	Red Rock & Anhydrite
1226	1285	59	Anhydrite
1285	2690	1405	Anhydrite & Salt
2690	2950	260	Anhydrite
2950	3041	91	Anhydrite & Dolomite
3041	3350	309	Dolomite
3350	- Total Depth Drilled		

GEOLOGICAL TOPS

Anhydrite 1223
Tansill 2802
Yates 2978

UNITED STATES DEPARTMENT OF THE INTERIOR
BUREAU OF LAND MANAGEMENT



FOR APPROVED
OMB NO. 1004-0137
Expires: December 31, 1991

5. LEASE DESIGNATION AND SERIAL NO.
NM 94851

6. IF INDIAN, ALLOTTEE OR TRIBE NAME
N/A

7. UNIT AGREEMENT NAME
N/A

8. FARM OR LEASE NAME, WELL NO.
Federal 9-8

9. API WELL NO.
30-025-33295

10. FIELD AND POOL, OR WILDCAT
West Teas Y-SR

11. SEC., T., R., M., OR BLOCK AND SURVEY OR AREA
Sec 9, T20S, R33E

WELL COMPLETION OR RECOMPLETION REPORT AND LOG*

1a. TYPE OF WELL: OIL WELL GAS WELL DRY Other

1b. TYPE OF COMPLETION: NEW WELL WORK OVER DEEPEN PLUG BACK DIFF. ENVR. Other

2. NAME OF OPERATOR
Stevens & Tull, Inc.

3. ADDRESS AND TELEPHONE NO.
P.O. Box 11005, Midland, TX 79702 (915) 500-1410

4. LOCATION OF WELL (Report location clearly and in accordance with any State requirements)*
At surface 990' FSL and 990' FEL
At top prod. interval reported below
At total depth 3462'

14. PERMIT NO. N/A DATE ISSUED N/A

12. COUNTY OR PARISH Lea 13. STATE NM

15. DATE SPUDDED 7/13/96 16. DATE T.D. REACHED 7/21/96 17. DATE COMPL. (Ready to prod.) 8/16/96 18. ELEVATIONS (DF, RKB, RT, GR, ETC.)* 3546 GR 19. ELEV. CASINGHEAD 3546

20. TOTAL DEPTH, MD & TVD 3462 21. PLUG BACK T.D., MD & TVD 3275 22. IF MULTIPLE COMPL., HOW MANY? N/A 23. INTERVALS DRILLED BY → ROTARY TOOLS X CABLE TOOLS

24. PRODUCING INTERVAL(S), OF THIS COMPLETION—TOP, BOTTOM, NAME (MD AND TVD)* 3116 - 3144 Yates 25. WAS DIRECTIONAL SURVEY MADE? Yes

26. TYPE ELECTRIC AND OTHER LOGS RUN Cased Hole GR-N 27. WAS WELL CORED? No

28. CARING RECORD (Report all strings set in well)

CASING SIZE/GRADE	WEIGHT, LB./FT.	DEPTH SET (MD)	HOLE SIZE	TOP OF CEMENT, CEMENTING RECORD	AMOUNT PULLED
8 5/8	24	1313	12 1/4	Surface - 800 sx "c"	0
5 1/2	17	3462	7 7/8	Surface - 610 sx "c"	0

29. LINER RECORD 30. TUBING RECORD

SIZE	TOP (MD)	BOTTOM (MD)	BACKS CEMENT*	SCREEN (MD)	SIZE	DEPTH SET (MD)	PACKER SET (MD)
N/A					2 7/8	3240	N/A

31. PREPARATION RECORD (Interval, size and number) 3116 - 3144 - 57 holes size - 0.385"

32. ACID, SHOT, FRACTURE, CEMENT SQUEEZE, ETC.

DEPTH INTERVAL (MD)	AMOUNT AND KIND OF MATERIAL USED
3116 - 3144	2000 gals 15% NEFE frac with 30,600# 12/20 with 388 bbls Borate gel

33. PRODUCTION

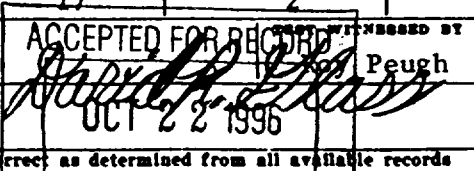
DATE FIRST PRODUCTION	PRODUCTION METHOD (Flowing, gas lift, pumping—size and type of pump)	WELL STATUS (Producing or shut-in)					
8/16/96	Pumping - 2 1/2" x 1 1/2" x 16' RWBC	Producing					
DATE OF TEST	HOURS TESTED	CHOKER SIZE	PROD'N. FOR TEST PERIOD	OIL—BSL.	GAS—MCF.	WATER—BSL.	GAS-OIL RATIO
8/20/96	24	N/A	→	60	17	2	283
FLOW. TUBING PRESS.	CASING PRESSURE	CALCULATED 24-HOUR RATE	OIL—BSL.	GAS—MCF.	WATER—BSL.	OIL GRAVITY-API (CORR.)	
N/A	40	→	60	17	2	36.8	

34. DISPOSITION OF GAS (Sold, used for fuel, vented, etc.)
Sold - GPM

35. LIST OF ATTACHMENTS
Deviation Survey, Logs

36. I hereby certify that the foregoing and attached information is complete and correct as determined from all available records

SIGNED *Michael H. McCoy* TITLE Consulting Engineer DATE 9/1/96



*(See Instructions and Spaces for Additional Data on Reverse Side)

37. SUMMARY OF POROUS ZONES: (Show all important zones of porosity and contents thereof; cored intervals; and all drill-stem tests, including depth interval tested, cushion used, time tool open, flowing and shut-in pressures, and recoveries):

FORMATION	TOP	BOTTOM	DESCRIPTION, CONTENTS, ETC.
Yates	3062	3150	Impurely graded sands
Seven Rivers	3330	3400	Clean Reef like dolomites

38. GEOLOGIC MARKERS

NAME	TOP	
	MEAN DEPTH	VERT. DEPTH
T/Yates	3062	3062
T/Seven Rivers	3330	3330

45. DEPTH

UNITED STATES
DEPARTMENT OF THE INTERIOR
GEOLOGICAL SURVEY

SUBMIT IN TRIP
(Other instruction
verse side)

Form approved.
Budget Bureau No. 42-R1424.

SUNDRY NOTICES AND REPORTS ON WELLS

(Do not use this form for proposals to drill or to deepen or plug back to a different reservoir.
Use "APPLICATION FOR PERMIT" for such proposals.)

1. OIL WELL <input type="checkbox"/> GAS WELL <input checked="" type="checkbox"/> OTHER		5. LEASE DESIGNATION AND SERIAL NO. NM-1059
2. NAME OF OPERATOR Gordon Knox & Associates		6. IF INDIAN, ALLOTTEE OR TRIBE NAME
3. ADDRESS OF OPERATOR 1010 Midland Savings Building, Midland, Texas		7. UNIT AGREEMENT NAME
4. LOCATION OF WELL (Report location clearly and in accordance with any State requirements.* See also space 17 below.) At surface 1980' from N & W Lines, Sec. 15, T-20-S, R-33-E.		8. FARM OR LEASE NAME Tenneco-Federal
14. PERMIT NO. (dtd. 12-26-63)	15. ELEVATIONS (Show whether DF, RT, GR, etc.) 3532' GR.	9. WELL NO. 1
		10. FIELD AND POOL, OR WILDCAT Wildcat
		11. SEC., T., R., M., OR BLK. AND SURVEY OR AREA Sec. 15, T-20-S, R-33-E, N.M.P.M.
		12. COUNTY OR PARISH Lea
		13. STATE N. Mex.

16. Check Appropriate Box To Indicate Nature of Notice, Report, or Other Data

NOTICE OF INTENTION TO:		SUBSEQUENT REPORT OF:	
TEST WATER SHUT-OFF <input type="checkbox"/>	PULL OR ALTER CASING <input type="checkbox"/>	WATER SHUT-OFF <input type="checkbox"/>	REPAIRING WELL <input type="checkbox"/>
FRACTURE TREAT <input type="checkbox"/>	MULTIPLE COMPLETE <input type="checkbox"/>	FRACTURE TREATMENT <input type="checkbox"/>	ALTERING CASING <input type="checkbox"/>
SHOOT OR ACIDIZE <input type="checkbox"/>	ABANDON* <input type="checkbox"/>	SHOOTING OR ACIDIZING <input type="checkbox"/>	ABANDONMENT* <input checked="" type="checkbox"/>
REPAIR WELL <input type="checkbox"/>	CHANGE PLANS <input type="checkbox"/>	(Other) <input type="checkbox"/>	

*NOTE: Report results of multiple completion on Well Completion or Recompletion Report and Log form.

17. DESCRIBE PROPOSED OR COMPLETED OPERATIONS (Clearly state all pertinent details, and give pertinent dates, including estimated date of starting any proposed work. If well is directionally drilled, give subsurface locations and measured and true vertical depths for all markers and zones pertinent to this work.)*

Top salt @ 1370'
Base Salt @ 2902'
Top Yates @ 3066'
Top 7-Rivers @ 3368'
Total Depth 3418'
P. & A. 1-14-64.

Surface casing @ 1350' (circulated)
Salt string @ 3038' (cemented w/50 sax.)
Salt string cut off - pulled 2685'
Oil string @ 3418' w/30 sax
Oil string cut off - pulled 2950'

Halliburton set cement plugs:
#1 3418'-3050'
#2 3050'-1200'
Mud 1200-20'
#3 20'-surface.

APPROVED

FEB 26 1964

E. G. HUBBLE
ACTING DISTRICT ENGINEER

18. I hereby certify that the foregoing is true and correct

SIGNED Sam R. Hershey TITLE Office Manager DATE Feb. 23, 1964

(This space for Federal or State office use)

APPROVED BY _____ TITLE _____ DATE _____
CONDITIONS OF APPROVAL, IF ANY:

Instructions

General: This form is designed for submitting proposals to perform certain well operations, and reports of such operations when completed, as indicated, on Federal and Indian lands pursuant to applicable Federal law and regulations, and, if approved or accepted by any State, on all lands in such State, pursuant to applicable State law and regulations. Any necessary special instructions concerning the use of this form and the number of copies to be submitted, particularly with regard to local, area, or regional procedures and practices, either are shown below or will be issued by, or may be obtained from, the local Federal and/or State office.

Item 4: If there are no applicable State requirements, locations on Federal or Indian land should be described in accordance with Federal requirements. Consult local State or Federal office for specific instructions.

Item 17: Proposals to abandon a well and subsequent reports of abandonment should include such special information as is required by local Federal and/or State offices. In addition, such proposals and reports should include reasons for the abandonment; data on any former or present productive zones, or other zones with present significant fluid contents not sealed off by cement or otherwise; depths (top and bottom) and method of placement of cement plugs; mud or other material placed below, between and above plugs; amount, size, method of parting of any casing, liner or tubing pulled and the depth to top of any left in the hole; method of closing top of well; and date well site conditioned for final inspection looking to approval of the abandonment.

UNITED STATES
DEPARTMENT OF THE INTERIOR
GEOLOGICAL SURVEY

SUBMIT IN DUPLIC.

(See other instructions on reverse side)

Form approved.
Budget Bureau No. 42-R355.5.

5. LEASE DESIGNATION AND SERIAL NO.

NW 1059

6. IF INDIAN, ALLOTTEE OR TRIBE NAME

7. UNIT AGREEMENT NAME

8. FARM OR LEASE NAME

Tenneco-Federal

9. WELL NO.

1

10. FIELD AND POOL, OR WILDCAT

Wildcat

11. SEC., T., R., M., OR BLOCK AND SURVEY OR AREA

Sec. 15, T-20-S, R-33-E, N.M.P.M.

12. COUNTY OR PARISH

Lea

13. STATE

N. Mex.

WELL COMPLETION OR RECOMPLETION REPORT AND LOG*

1a. TYPE OF WELL: OIL WELL GAS WELL DRY Other _____

b. TYPE OF COMPLETION: NEW WELL WORK OVER DEEP-EN PLUG BACK DIFF. RESVR. Other _____

2. NAME OF OPERATOR
Gordon Knox & Associates

3. ADDRESS OF OPERATOR
1010 Midland Savings Building, Midland, Texas

4. LOCATION OF WELL (Report location clearly and in accordance with any State requirements)*
At surface **Center of SE/4 of NW/4, Sec. 15, T-20-S, R-33-E.**
At top prod. interval reported below **Same**
At total depth **Same**

14. PERMIT NO. _____ DATE ISSUED **12-26-63**

15. DATE SPUDDED **12-30-63** 16. DATE T.D. REACHED **1-9-64** 17. DATE COMPL. (Ready to prod.) **Dry** 18. ELEVATIONS (DF, REB, RT, GR, ETC.)* **3532' GR** 19. ELEV. CASINGHEAD _____

20. TOTAL DEPTH, MD & TVD **3418'** 21. PLUG, BACK T.D., MD & TVD **3384'** 22. IF MULTIPLE COMPL., HOW MANY* _____ 23. INTERVALS DRILLED BY _____ ROTARY TOOLS _____ CABLE TOOLS _____

24. PRODUCING INTERVAL(S), OF THIS COMPLETION—TOP, BOTTOM, NAME (MD AND TVD)*
Yates 3066-3368' 25. WAS DIRECTIONAL SURVEY MADE **Yes**

26. TYPE ELECTRIC AND OTHER LOGS RUN **GR & Sonic - ES & Induction - Cement bond & temperature** 27. WAS WELL CORED **No**

3. CASING RECORD (Report all strings set in well)

CASING SIZE	WEIGHT, LB./FT.	DEPTH SET (MD)	HOLE SIZE	CEMENTING RECORD	AMOUNT FULLED
9 5/8	32.3#	1350'	13 3/4	Circ. w/842 sacks	None
7"	20-23#	3038	8 3/4	50 sacks, top @ 2735'	2685'
4 1/2"	9.5#	3418	6 1/2"	35 sacks, top @ 3080'	2950'

29. LINER RECORD				30. TUBING RECORD			
SIZE	TOP (MD)	BOTTOM (MD)	SACKS CEMENT*	SCREEN (MD)	SIZE	DEPTH SET (MD)	PACKER-SET (MD)

31. PERFORATION RECORD (Interval, size and number)	32. ACID, SHOT, FRACTURE, CEMENT SQUEEZE, ETC.
	DEPTH INTERVAL (MD) AMOUNT AND KIND OF MATERIAL USED
Perf. 3206' to 3216' w/10 jet shots.	3206-3216 A/500 reg. 15% NE

33.* PRODUCTION							
DATE FIRST PRODUCTION	PRODUCTION METHOD (Flowing, gas lift, pumping—size and type of pump)					WELL STATUS (Producing or shut-in)	
Dry							
DATE OF TEST	HOURS TESTED	CHOKE SIZE	PROD'N. FOR TEST PERIOD	OIL—BBL.	GAS—MCF.	WATER—BBL.	GAS-OIL RATIO
FLOW. TUBING PRESS.	CASING PRESSURE	CALCULATED 24-HOUR RATE	OIL—BBL.	GAS—MCF.	WATER—BBL.	OIL GRAVITY-API (CORR.)	

34. DISPOSITION OF GAS (Sold, used for fuel, vented, etc.) _____ TEST WITNESSED BY _____

35. LIST OF ATTACHMENTS

36. I hereby certify that the foregoing and attached information is complete and correct as determined from all available records

SIGNED *[Signature]* TITLE **Office Manager** DATE **January 28, 1964**

*(See Instructions and Spaces for Additional Data on Reverse Side)

INSTRUCTIONS

General: This form is designed for submitting a complete and correct well completion report and log on all types of lands and leases to either a Federal agency or a State agency, or both, pursuant to applicable Federal and/or State laws and regulations. Any necessary special instructions concerning the use of this form and the number of copies to be submitted, particularly with regard to local, area, or regional procedures and practices, either are shown below or will be issued by, or may be obtained from, the local Federal and/or State office. See instructions on items 22 and 24, and 33, below regarding separate reports for separate completions.

If not filed prior to the time this summary record is submitted, copies of all currently available logs (drillers, geologists, sample and core analysis, all types electric, etc.), formation and pressure tests, and directional surveys, should be attached hereto, to the extent required by applicable Federal and/or State laws and regulations. All attachments should be listed on this form, see item 35.

Item 4: If there are no applicable State requirements, locations on Federal or Indian land should be described in accordance with Federal requirements. Consult local State or Federal office for specific instructions.

Item 18: Indicate which elevation is used as reference (where not otherwise shown) for depth measurements given in other spaces on this form and in any attachments. Items 22 and 24: If this well is completed for separate production from more than one interval zone (multiple completion), so state in item 22, and in item 24 show the producing interval, or intervals, top(s), bottom(s) and name(s) (if any) for only the interval reported in item 33. Submit a separate report (page) on this form, adequately identified, for each additional interval to be separately produced, showing the additional data pertinent to such interval.

Item 29: "Sacks Cement": Attached supplemental records for this well should show the details of any multiple stage cementing and the location of the cementing tool.

Item 33: Submit a separate completion report on this form for each interval to be separately produced. (See instruction for items 22 and 24 above.)

37. SUMMARY OF POROUS ZONES: SHOW ALL IMPORTANT ZONES OF POROSITY AND CONTENTS THEREOF; CORED INTERVALS; AND ALL DRILL-STEM TESTS, INCLUDING DEPTH INTERVAL TESTED, CUSHION USED, TIME TOOL OPEN, FLOWING AND SHUT-IN PRESSURES, AND RECOVERIES		38. GEOLOGIC MARKERS	
FORMATION	TOP	BOTTOM	DESCRIPTION, CONTENTS, ETC.
		TOP	
		MEAS. DEPTH	TRUE VERT. DEPTH
Yates	3066	3368	Base salt Yates Seven Rivers
Water - slight show oil and gas @ 3206-16'. No cores or DST.			