

# QUAY VALLEY, INC

## North Elmar Unit #3

FORMERLY ANTWEIL MORRIS R FEDERAL LITTLEFIELD DQ 1-X

(NMOCD # , API# 30-025-084200)

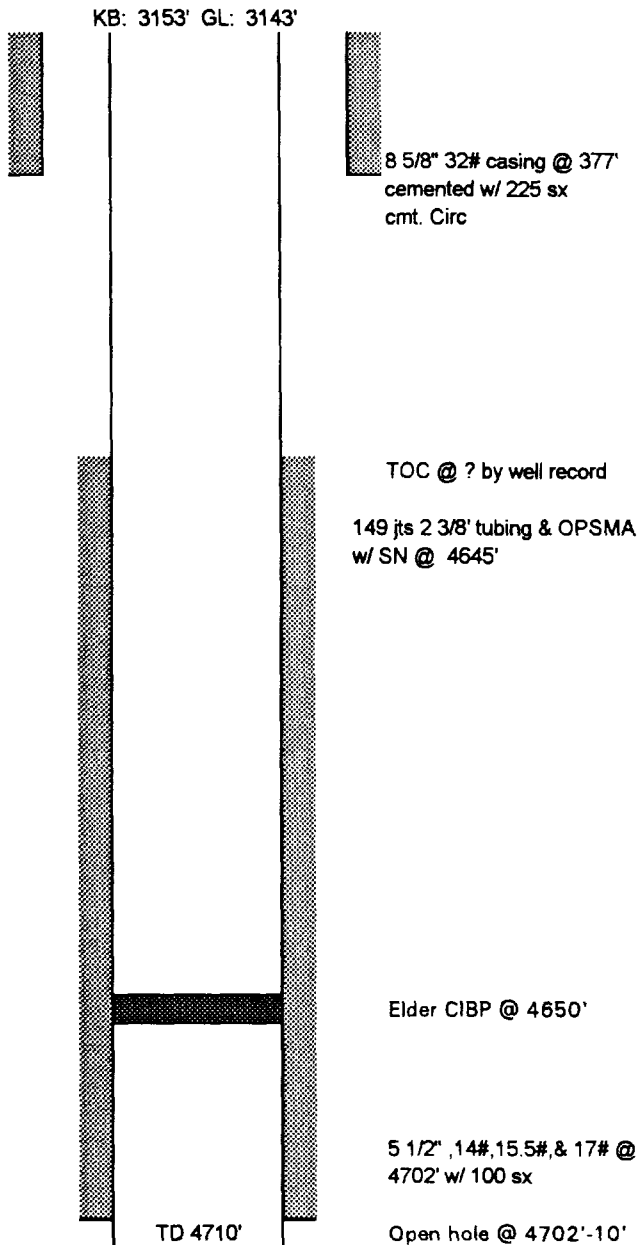
330' FSL & 330' FWL

Section 19, T-26-S, R-33-E

Lea County, New Mexico

SPUD DATE: 6/30/61

COMPLETION DATE: 7/17/61



Fluid Information:

Formation Tops:

NEMU #3

Added "open hole @ 4702'-  
10" & "Elder"/deleted perms

QUAY VALLEY, INC.	Bobby Gray/Gray Pumping
JULY, 1996	915/943-4397
	NEMU #3
Status	(TA) Formerly: Federal Littlefield "DQ" 1-X
County & State	Lea County, New Mexico
Spud Date:	06/30/1961
Completion	07/17/1961
Total Depth	4,710'
Surface Casing	8 5/8" @ 377' 225 sx TOC: surface
	Hole Size:
Production Casing	5 1/2" @ 4,702' 100 sx TOC:
	Hole Size:
Tubing Size	149 jts of 2 3/8" @ 4,645'
Perforations	Open hole. 4702' - 10'
Packer Size & Type	
Bridge Plug, If one	Elder CIBP @ 4,650'

# QUAY VALLEY, INC

## North El Mar Unit #5

FORMERLY WORLDWIDE PETROLEUM MELISSA FEDERAL #1

(API# 30-025-082720)

660' FNL & 660' FEL

Section 25, T-26-S, R-32-E  
Lea County, New Mexico

SPUD DATE: 7/20/59

COMPLETION DATE: 7/27/59

DF: 3139 GL: 3129'

8 5/8" OD @ 422'  
w/ 125 sx (circ)

2" No-Go, 1-1 1/2 k-bar 102-5/8 rods  
& 69- 3/4" Rods

147 jts of 2 3/8", 4.7#, eue 8rd P.C.  
tubing @ 4623

by well record

CIBP ARROW "PDQ" @ 4624'

Perfs 4672'-4680' w/ 4 shots per foot

PBP 4708'  
TD 4745'

4 1/2" 9.5 # @ 4735  
w/ 245 sx cement

**QUAY VALLEY, INC.**  
**JULY, 1996**

Bobby Gray/Gray Pumping  
915/943-4397

**NEMU #5**

Status	(TA)	Formerly: Melissa Federal #1
County & State	Lea County, New Mexico	
Spud Date:	07/20/59	
Completion	07/27/59	
Total Depth	4,745'	
Surface Casing	8 5/8" @ 422' 125 sx	TOC: Surface
	Hole Size:	
Production Casing	4 1/2" @ 4,735' 245 sx	TOC:
	Hole Size:	
Tubing Size	147 jts of 2 3/8" @ 4,623'	
Perforations	4,672'-80'	
Packer Size & Type		
Bridge Plug, If one	Arrow "PDQ" CIBP @ 4,624'	

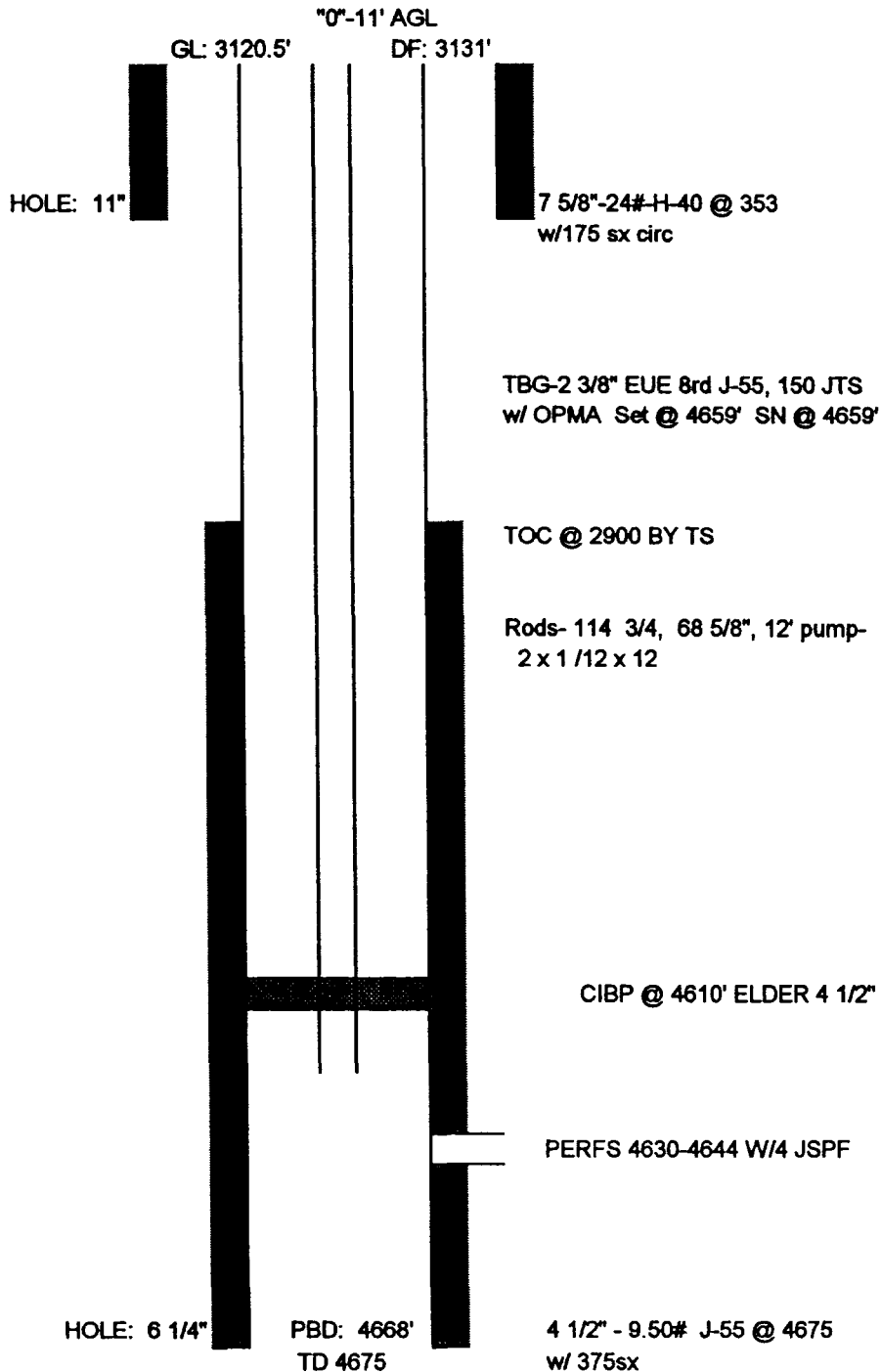
# QUAY VALLEY, INC

## North El Mar Unit #7

FORMERLY CONTINENTAL OIL WILDER #15  
(API# 30-025-082860)

660' FNL & 1980' FWL  
Section 25, T-26-S, R-32-E  
Lea County, New Mexico

SPUD DATE: 11/29/59 COMPLETION DATE: 12/13/59



**QUAY VALLEY, INC.**  
**JULY, 1996**

Bobby Gray/Gray Pumping  
915/943-4397

**NEMU #7**

Status	(TA)	Formerly: Wilder #15
County & State	Lea County, New Mexico	
Spud Date:	11/29/59	
Completion	12/13/59	
Total Depth	4,675'	
Surface Casing	7 5/8" @ 353' 175 sx Hole Size: 11"	TOC: Circ. to Surface
Production Casing	4 1/2" @ 4,675 375 sx Hole Size: 6 1/4"	TOC: 2,900'
Tubing Size	2 3/8" @ 4,659'	
Perforations	4,630'-44'	
Packer Size & Type		
Bridge Plug, If one	Elder 4 1/2" cement retension @ 4,610'	

# QUAY VALLEY, INC

North El Mar Unit #9

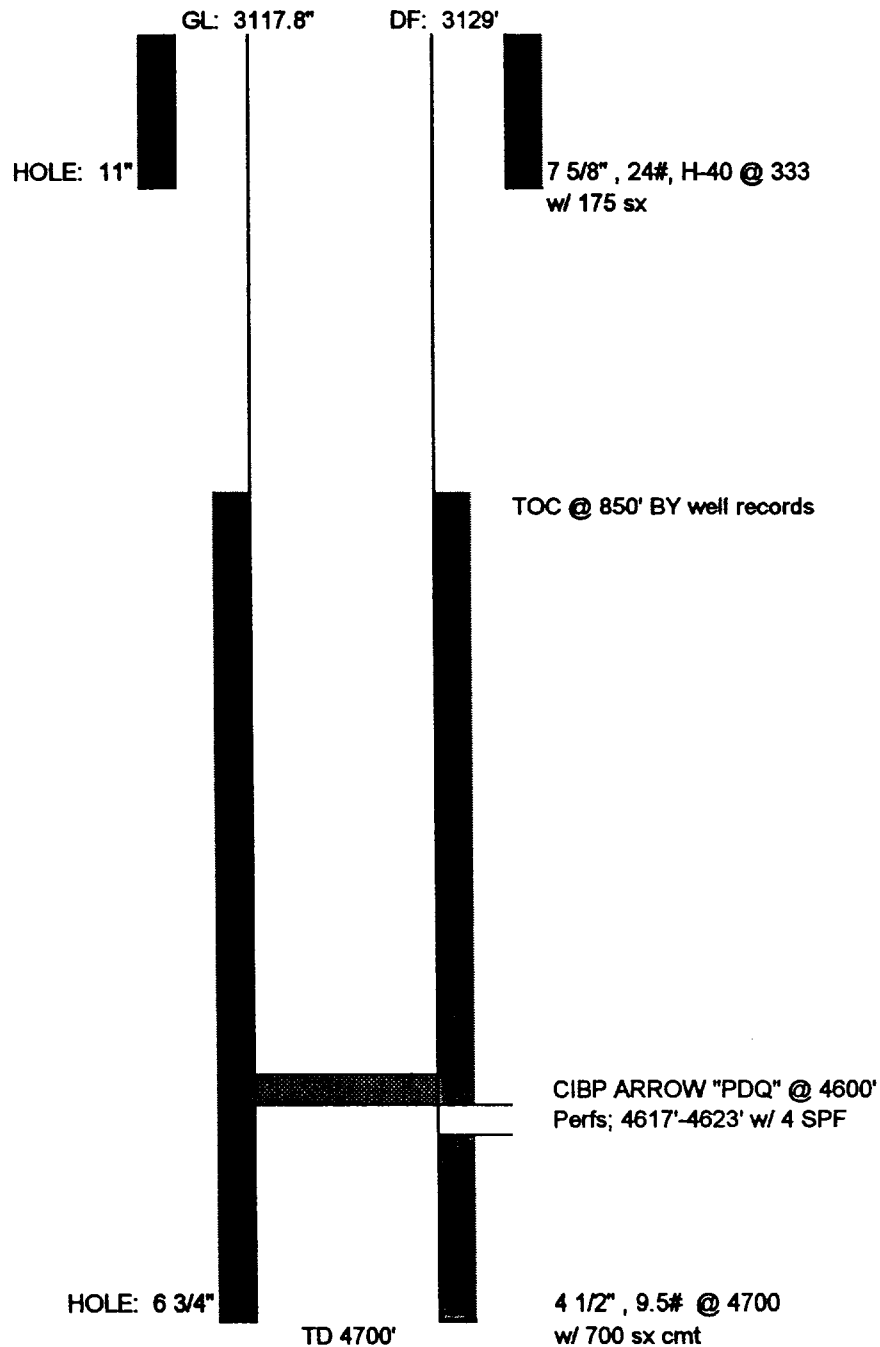
FORMERLY CONTINENTAL OIL WILDER #26

(API# 30-025-082980)

990' FNL & 660' FEL

Section 26, T-26-S, R-32-E  
Lea County, New Mexico

SPUD DATE: 7/22/60 COMPLETION DATE: 8/13/60



**QUAY VALLEY, INC.**  
**JULY, 1996**

**Bobby Gray/Gray Pumping**  
**915/943-4397**

**NEMU #9**

Status	(TA) Formerly: Wilder #26
County & State	Lea County, New Mexico
Spud Date:	07/22/60
Completion	08/13/60
Total Depth	4,700'
Surface Casing	7 5/8" @ 333' 175 sx TOC: Surface Hole Size: 11"
Production Casing	4 1/2" @ 4,700' 700 sx TOC: 850' Hole Size: 6 3/4"
Tubing Size	2 3/8" (nothing in wellbore)
Perforations	4,617'-23'
Packer Size & Type	
Bridge Plug, If one	Arrow "PDQ" CIBP @ 4,600'



# QUAY VALLEY, INC

## North El Mar Unit #11

FORMERLY CONTINENTAL OIL WILDER #25

(API# 30-025-082970)

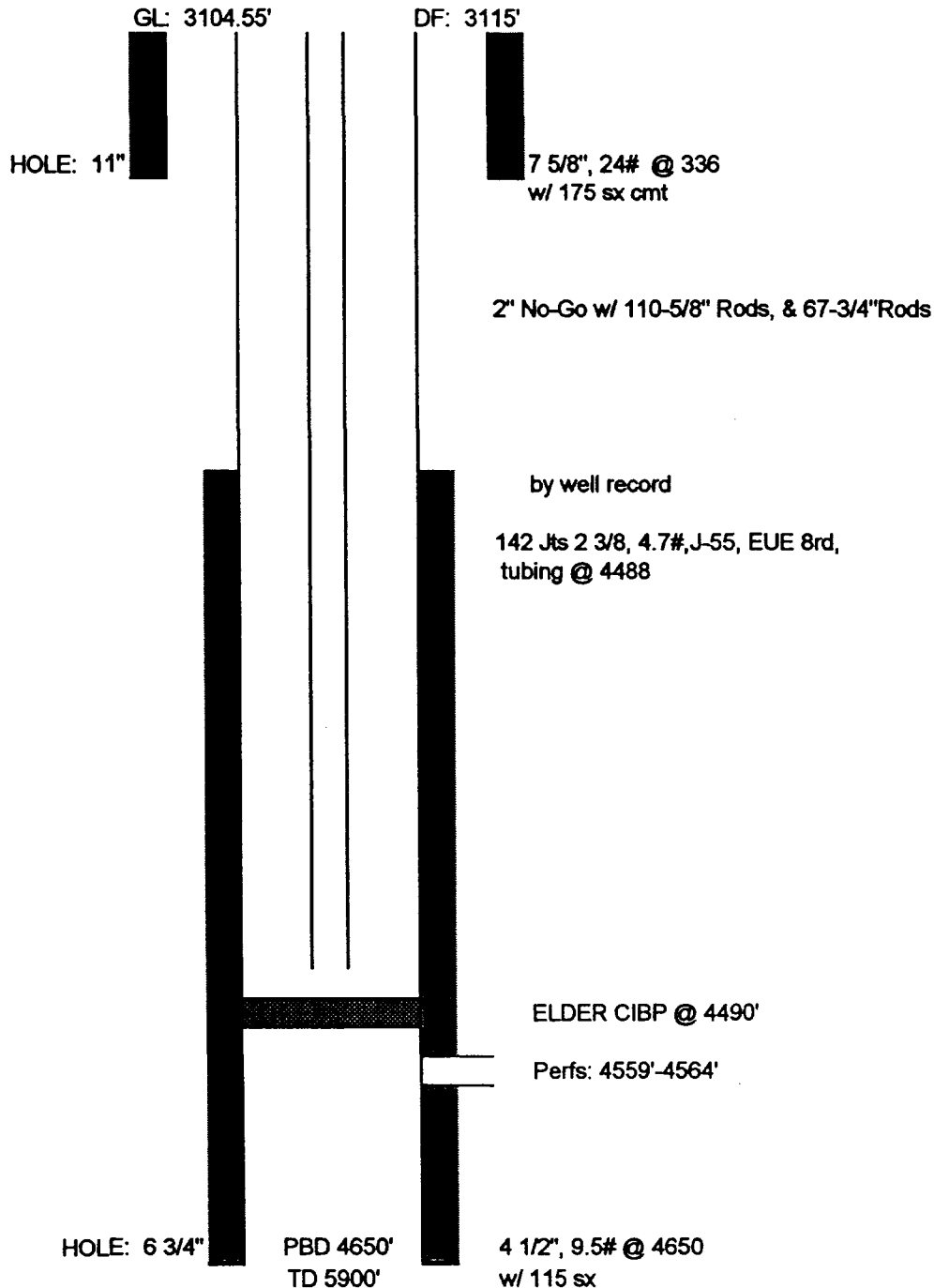
1980' FNL & 1980' FEL

Section 26, T-26-S, R-32-E

Lea County, New Mexico

SPUD DATE: 6/24/60

COMPLETION DATE: 7/17/60



**QUAY VALLEY, INC.**  
JULY, 1996

Bobby Gray/Gray Pumping  
915/943-4397

**NEMU #11**

Status	(TA)	Formerly: Wilder #25
County & State	Lea County, New Mexico	
Spud Date:	06/24/60	
Completion	07/17/60	
Total Depth	5,900' PBTD @ 4,650'	
Surface Casing	7 5/8" @ 336' 175 sx	TOC: Surface
	Hole Size: 11"	
Production Casing	4 1/2" @ 4,650' 1,15 sx	TOC:
	Hole Size: 6 3/4"	
Tubing Size	2 3/8" @ 4,488'	
Perforations	4,559'-64'	
Packer Size & Type		
Bridge Plug, If one	Elder CIBP @ 4,490'	

# QUAY VALLEY, INC

North El Mar Unit #13

FORMERLY CONTINENTAL OIL WILDER #14

(API# 30-025-082850)

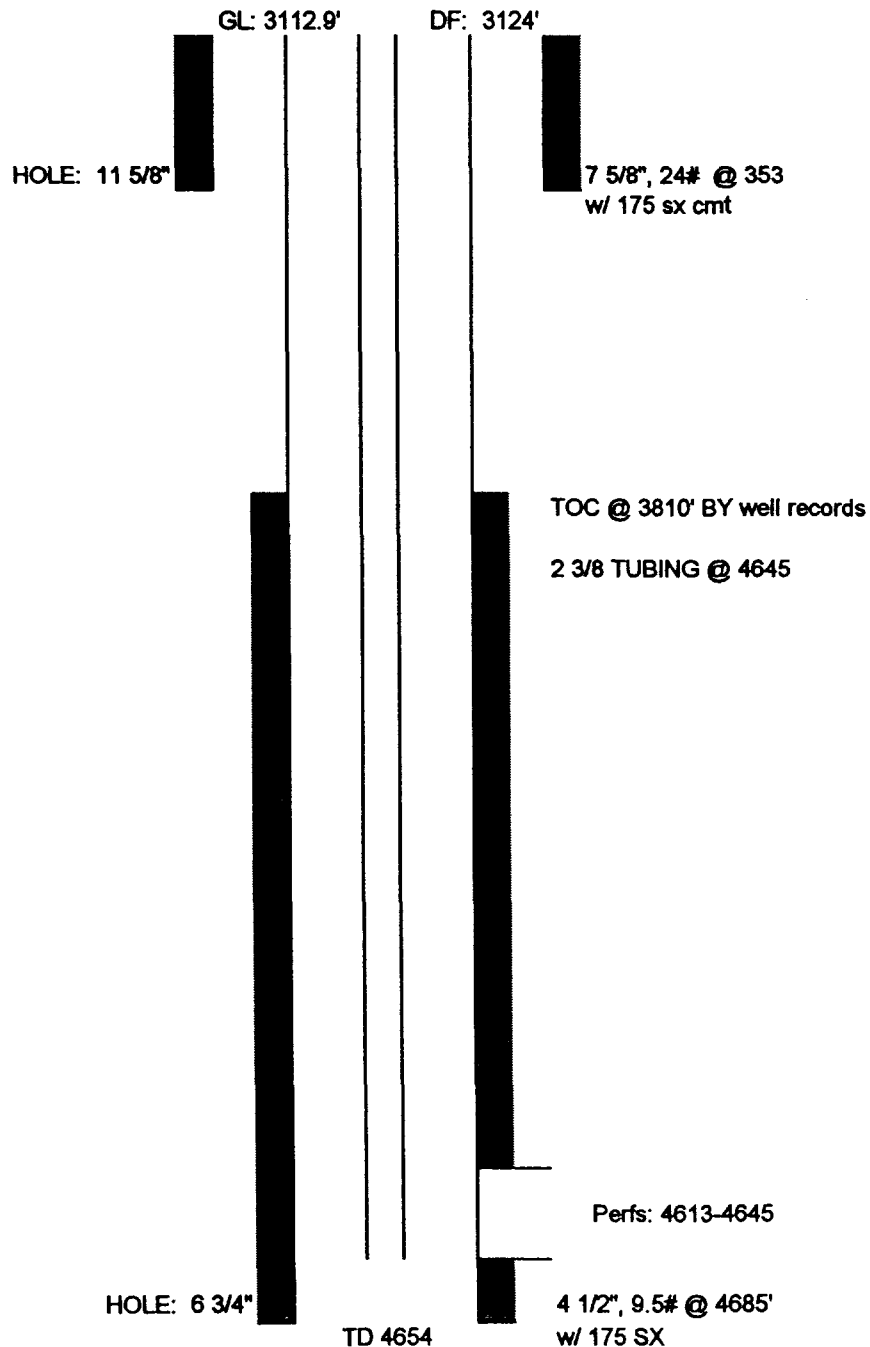
1980' FNL & 660 FWL

Section 25, T-26-S, R-32-E

Lea County, New Mexico

SPUD DATE: 11/01/59

COMPLETION DATE: 11/16/59



**QUAY VALLEY, INC.**  
**JULY, 1996**

**Bobby Gray/Gray Pumping**  
**915/943-4397**

**NEMU #13**

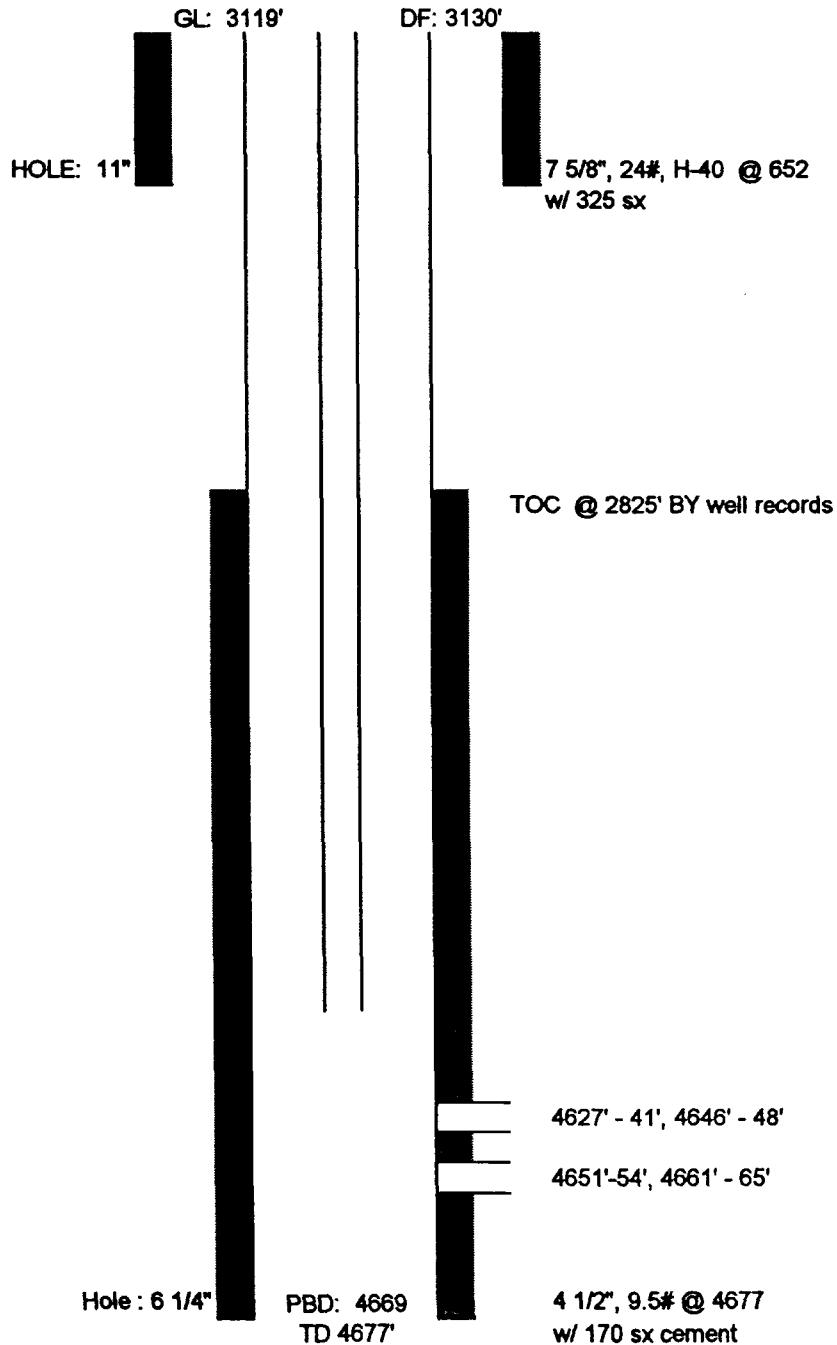
Status	(POW) Formerly: Wilder #14
County & State	Lea County, New Mexico
Spud Date:	11/01/59
Completion	11/16/59
Total Depth	4,654'
Surface Casing	7 5/8" @ 353' 175 sx TOC: Surface Hole Size: 11 5/8"
Production Casing	4 1/2" @ 4,654' 175 sx TOC: 3,810' Hole Size: 6 3/4"
Tubing Size	2 3/8" @ 4,645'
Perforations	4,613'-45'
Packer Size & Type	
Bridge Plug, If one	

# QUAY VALLEY, INC

North El Mar Unit #15  
FORMERLY CONTINENTAL OIL WILDER #8  
(API# 30-025-082790)

1980' FNL & 1980' FEL  
Section 25, T-26-S, R-32-E  
Lea County, New Mexico

SPUD DATE: 7/23/59 COMPLETION DATE: 8/2/59



QUAY VALLEY, INC.  
JULY, 1996

Bobby Gray/Gray Pumping  
915/943-4397

NEMU #15

Status	(POW)	Formerly: Wilder #8
County & State	Lea County, New Mexico	
Spud Date:	07/23/59	
Completion	08/02/59	
Total Depth	4,677' PBSD 4,669' +/-	
Surface Casing	7 5/8" @ 652' 325 sx	TOC: Surface Hole Size: 11"
Production Casing	4 1/2" @ 4,677' 170 sx	TOC: 2,825' Hole Size: 6 1/4"
Tubing Size	2 3/8"	
Perforations	4,627'-41', 4,646'-48', 4,651'-54', 4,661'-65'	
Packer Size & Type		
Bridge Plug, If one	Arrow "PDQ" CIBP @ 4,580' Cement plug top - 669' bottom - 861' 9/25/95 drilled hard cement from 665' to 860'. Drilled out CIBP.	

# Quay Valley, INC

North El Mar Unit #17

FORMERLY CONTINENTAL OIL PAYNE #2

(API# 30-025-084300)

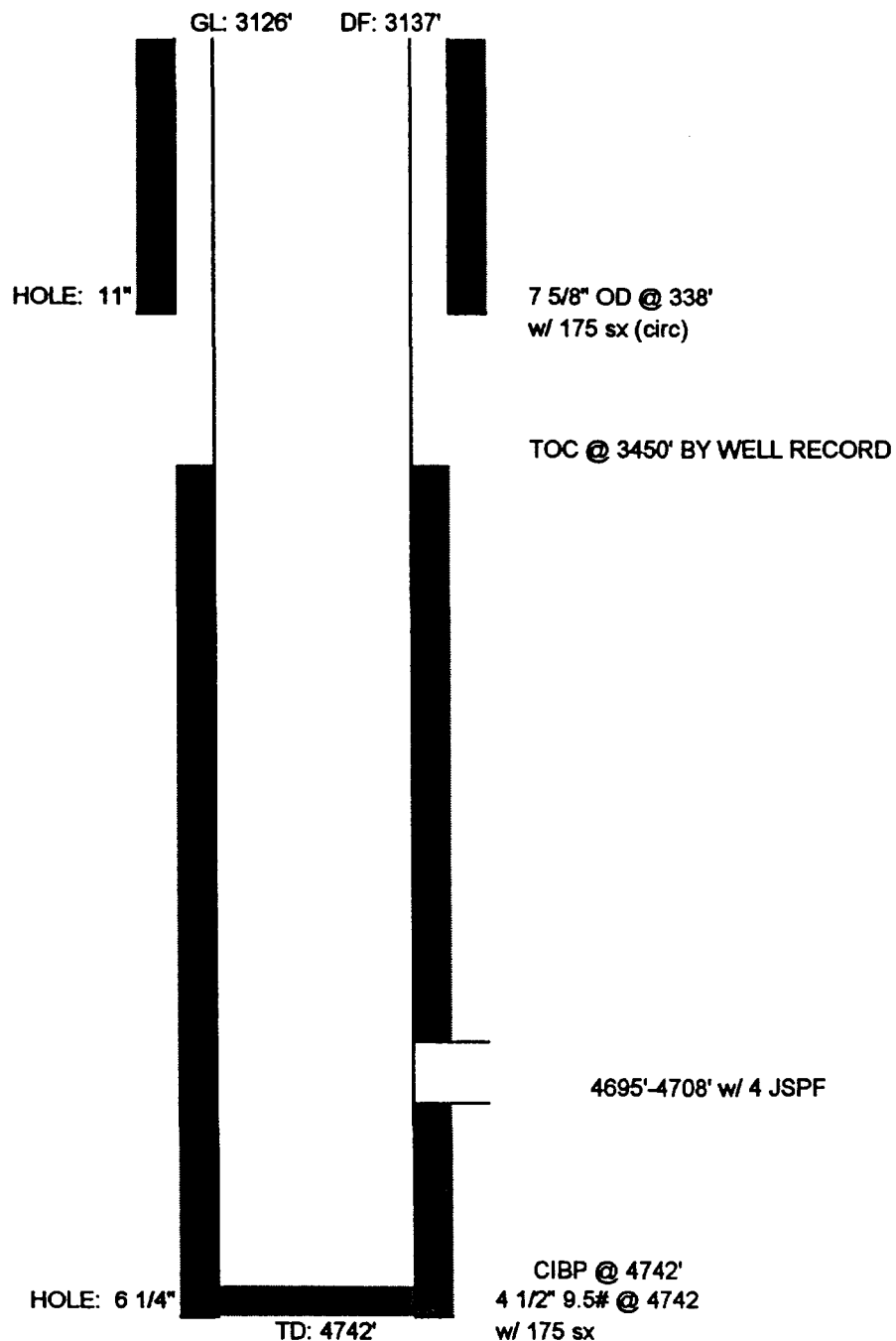
1880' FNL & 660' FWL

Spud Date: 9/7/59

Completion: 9/18/59

Section 30, Township 26 South, Range 33 East

Lea County, NM



**QUAY VALLEY, INC.**  
**JULY, 1996**

**Bobby Gray/Gray Pumping**  
**915/943-4397**

**NEMU #17**

Status	(TA)	Formerly: Payne #2
County & State	Lea County, New Mexico	
Spud Date:	09/07/59	
Completion	09/18/59	
Total Depth	4,742'	
Surface Casing	7 5/8" @ 338' 175 sx	TOC: Surface Hole Size: 11"
Production Casing	4 1/2" @ 4,742' 175 sx	TOC: 3,450' Hole Size: 6 1/4"
Tubing Size	1/27/95 took out 2 3/8"	
Perforations	4,695'-4,708'	
Packer Size & Type		
Bridge Plug, If one	Arrow "PDQ" CIBP @ 4,672. Knocked down to 4,742'.	



# Quay Valley, INC

North El Mar Unit #19

FORMERLY CONTINENTAL OIL PAYNE #4  
(NMOCD #7, API# 30-025-084320)

1980' FSL & 1980' FWL

Spud Date: 10/21/59 Completion: 10/31/59

Section 30, Township 26 South, Range 33 East  
Lea County, NM

