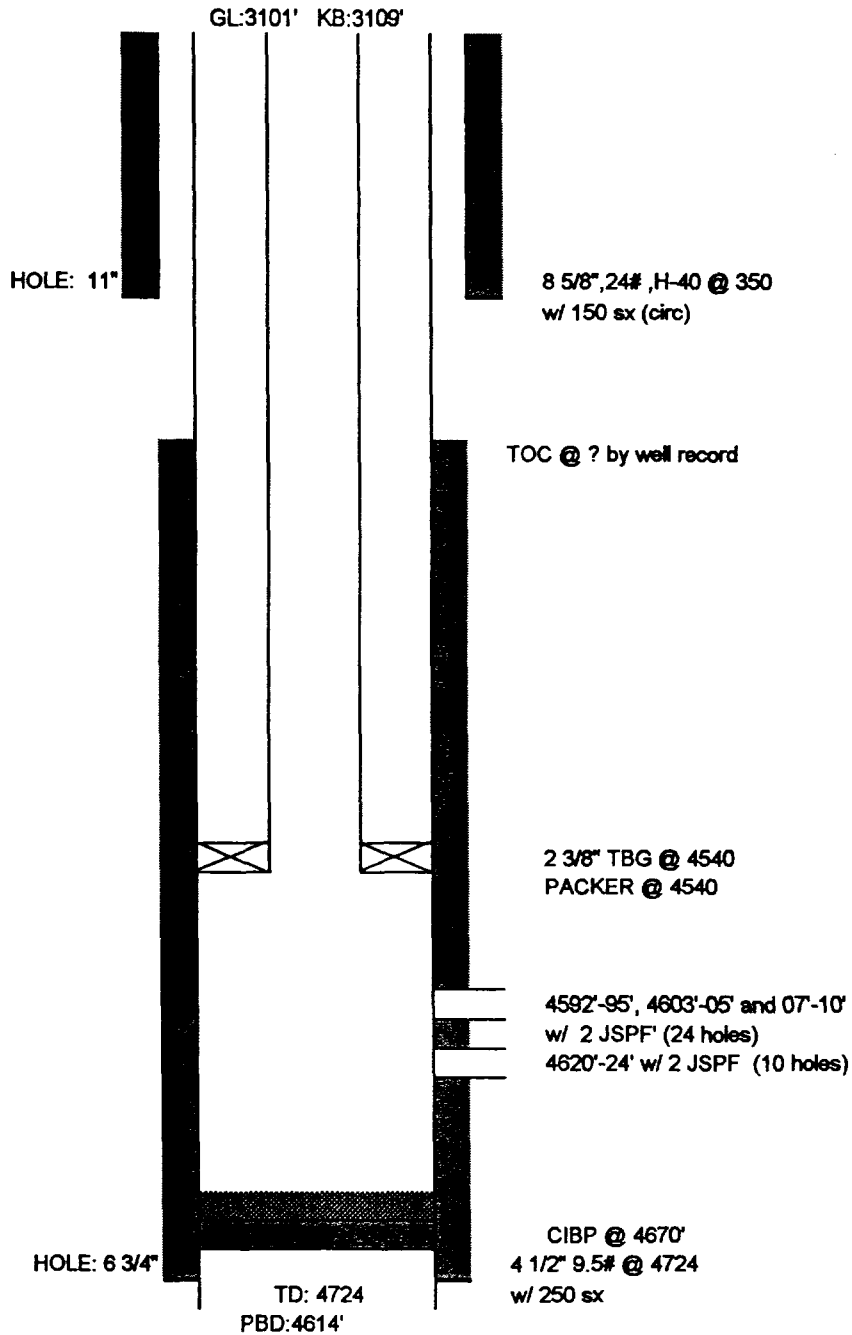


Quay Valley, INC
North El Mar Unit #43
FORMERLY KERN COUNTY LAND STATE 36 #2
(NMOCD #7, AP# 30-025-083150)

543' FNL & 2108' FWL
Section 36, Township 26 South, Range 32 East
Lea County, NM

Spud Date: 6/02/59 Completion: 6/23/59



NEMU #43
Corrected TD to 4,724'

QUAY VALLEY, INC.
JULY, 1996

Bobby Gray/Gray Pumping
915/943-4397
NEMU #43

Status	(POW) Formerly: State 36 #2
County & State	Lea County, New Mexico
Spud Date:	06/02/1959
Completion	06/23/1959
Total Depth	4,724' PBDT @ 4,614'
Surface Casing	8 5/8" @ 350' 150 sx TOC: Surface HOLE SIZE: 11"
Production Casing	4 1/2" @ 4,724' 250 sx TOC: ? HOLE SIZE: 6 3/4"
Tubing Size	2 3/8" @ 4,540'
Perforations	4,592'-95', 4,603-05', 4,607'-10', 4,620'-24'
Packer Size & Type	@ 4,540'
Bridge Plug, If one	Drilled out CIBP @ 4,554'; pushed to 4,670' (01/95)

Quay Valley, INC

North El Mar Unit #44

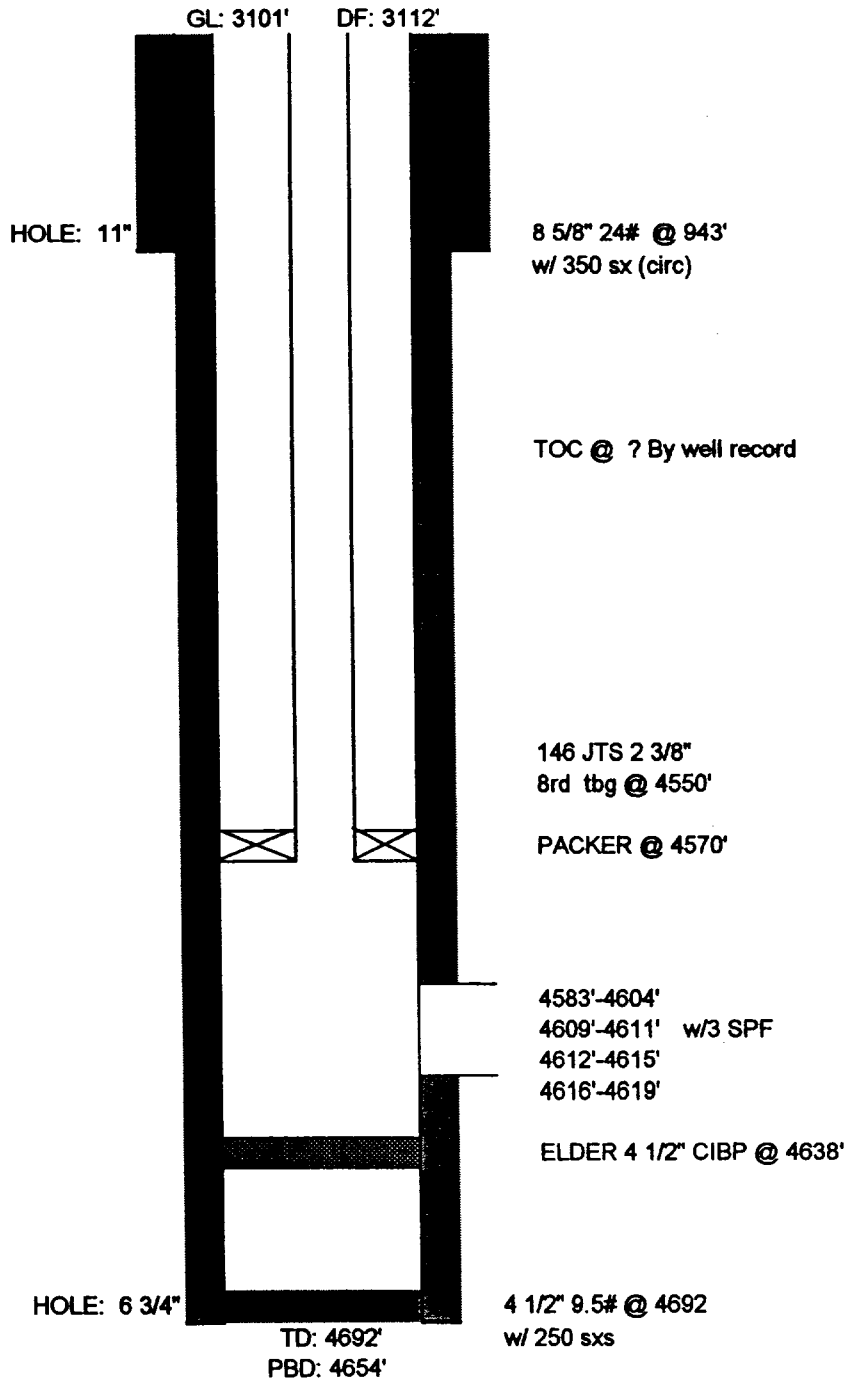
FORMERLY KERN COUNTY LAND STATE 36 #1

(API# 30-025-083140)

330' FNL & 330' FWL
Section 36, Township 26 South, Range 32 East
Lea County, NM

Spud Date: 2/19/59

Completion: 3/1/59



QUAY VALLEY, INC.
JULY, 1996

Bobby Gray/Gray Pumping
915/943-4397

NEMU #44

Status	(POW)	Formerly: State 36 #1
County & State	Lea County, New Mexico	
Spud Date:	02/19/59	
Completion	03/01/59	
Total Depth	4,692' PBTD @ 4,654'	
Surface Casing	8 5/8" @ 943' 350 sx	TOC: Surface Hole Size: 11"
Production Casing	4 1/2" @ 4,692' 250 sx	TOC: Surface (?) Hole Size: 6 3/4"
Tubing Size	2 3/8" @ 4,550'	
Perforations	4,583'-4,604', 4,609'-11', 4,612'-15', 4,616'-19'	
Packer Size & Type	@ 4,570'	
Bridge Plug, If one	Elder 4 1/2" @ 4,555'. Knocked out & pushed to 4,638'.	

Quay Valley, INC

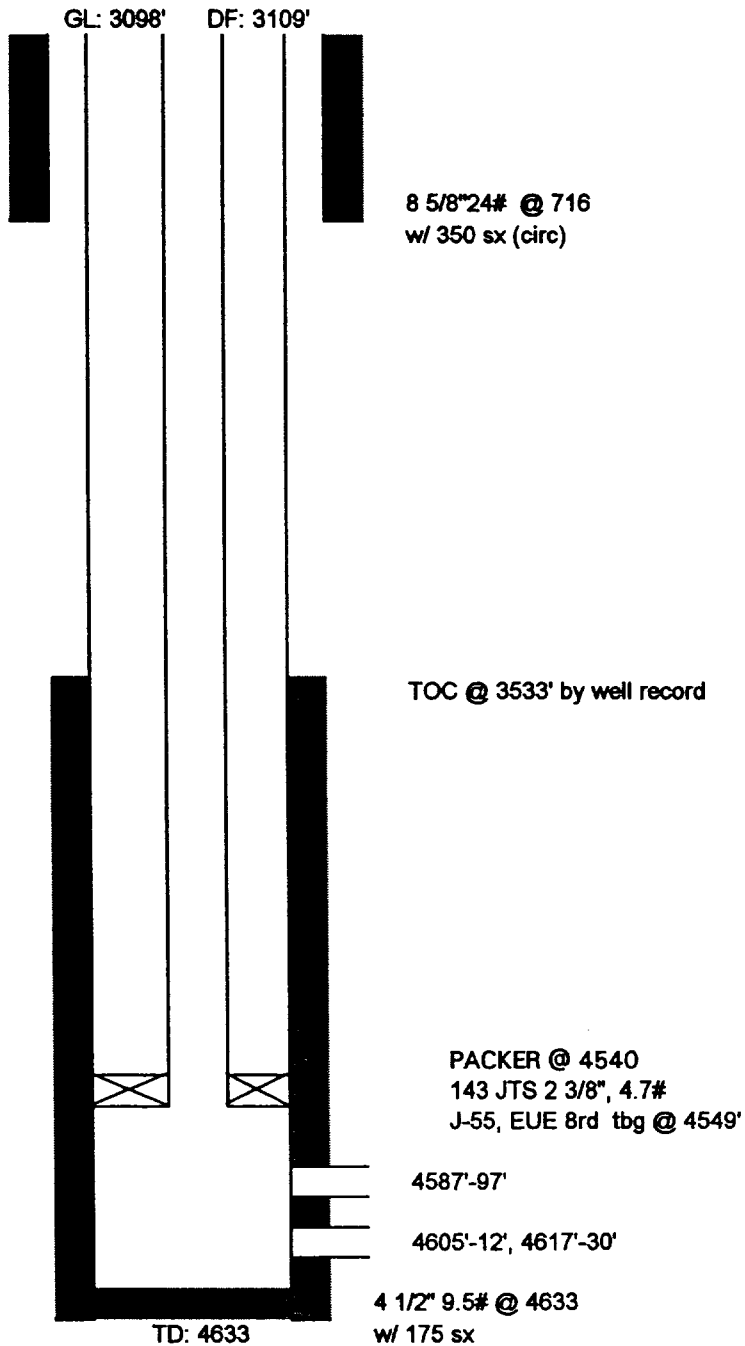
North El Mar Unit #45

FORMERLY CONTINENTAL OIL BRADLEY 35 #1

(API# 30-025-083080)

660' FNL & 330' FEL
Section 35, Township 26 South, Range 32 East
Lea County, NM

Spud Date: 5/12/59 Completion: 5/23/59



QUAY VALLEY, INC.
JULY, 1996

Bobby Gray/Gray Pumping
915/943-4397

NEMU #45

Status	(TA) Formerly: Bradley 35 #1
County & State	Lea County, New Mexico
Spud Date:	05/12/59
Completion	05/23/59
Total Depth	4,633'
Surface Casing	8 5/8" @ 716' 350 sx TOC: Surface Hole Size: ?
Production Casing	4 1/2" @ 4,633' 175 sx TOC: 3,533' Hole Size: ?
Tubing Size	2 3/8" @ 4,549'
Perforations	4,587'-97', 4,605'-12', 4,617'-30'
Packer Size & Type	@ 4,540'
Bridge Plug, If one	Arrow "PDQ" @ 4,551' (Knock out - Run BHPT) ^{Test} 5-28-97

Quay Valley, INC

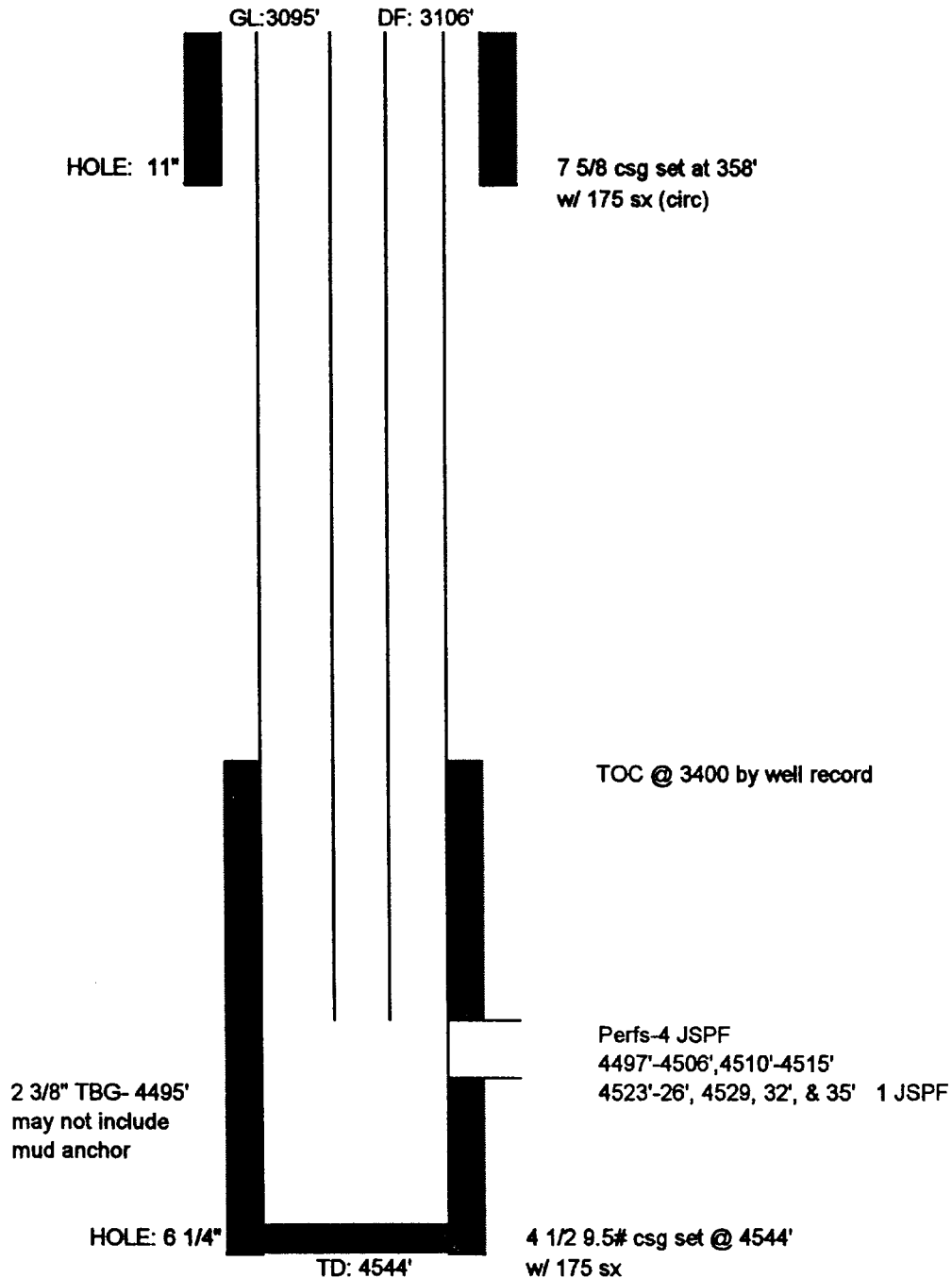
North El Mar Unit #47

FORMERLY CONTINENTAL OIL BRADLEY 36 #3

(API# 30-025-063100)

660' FNL & 1980' FWL
Section 35, Township 26 South, Range 32 East
Lea County, NM

Spud Date: 12/20/59 Completion: 12/29/59



QUAY VALLEY, INC.
JULY, 1996

Bobby Gray/Gray Pumping
915/943-4397

NEMU #47

Status	(POW)	Formerly: Bradley 35 #3
County & State	Lea County, New Mexico	
Spud Date:	12/20/59	
Completion	12/29/59	
Total Depth	4,544'	
Surface Casing	7 5/8" @ 358' 175 sx TOC: Surface Hole Size: 11"	
Production Casing	4 1/2" @ 4,544' 175 sx TOC: 3,400' Hole Size: 6 1/4"	
Tubing Size	2 3/8" @ 4,495'	
Perforations	4,497'-4,506', 4,510'-4,515', 4,523'-26'-29', 32', 35'	
Packer Size & Type		
Bridge Plug, If one		

Quay Valley, INC

North El Mar Unit #49

FORMERLY TEXACO INC ELLIOT FEDERAL #2

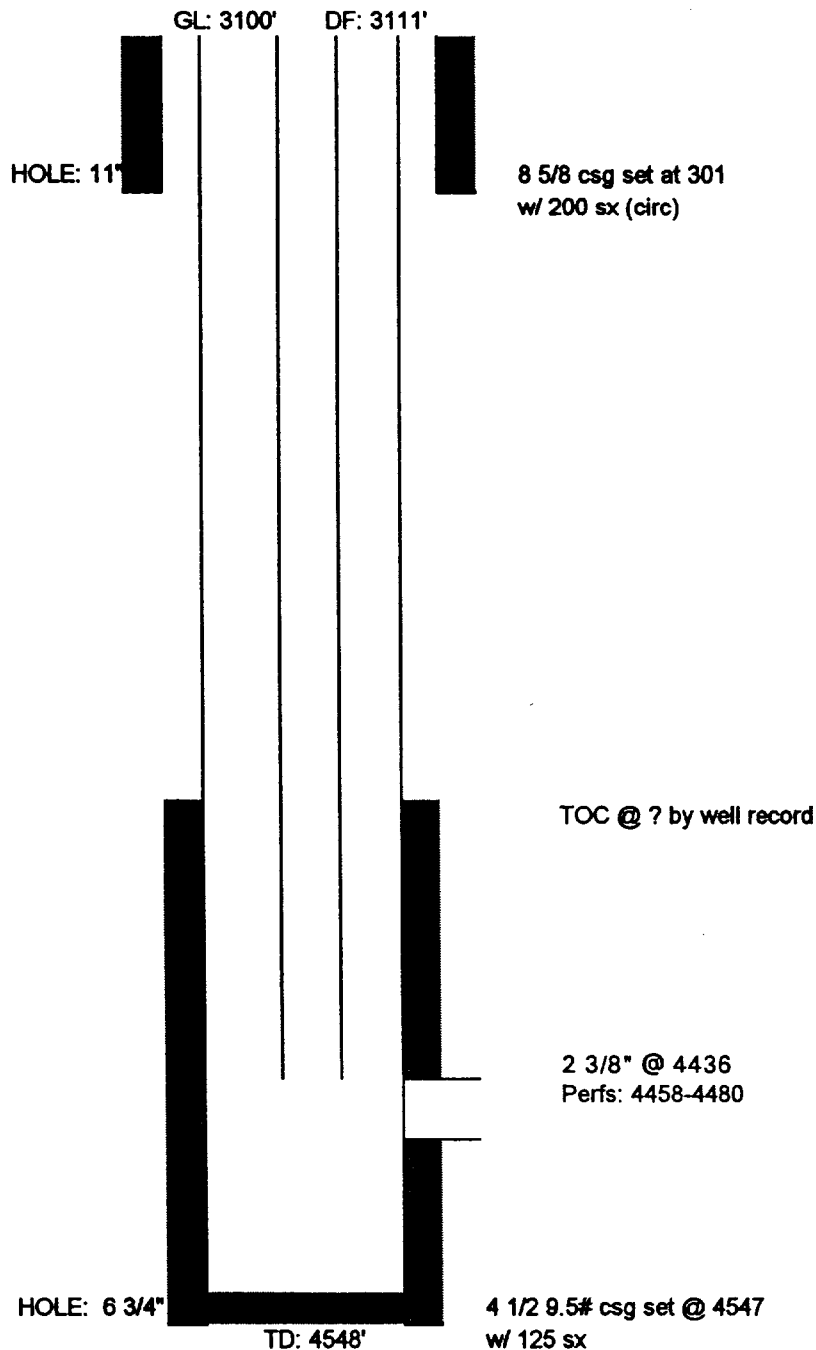
(API# 30-025-083060)

1016' FNL & 330' FEL

Spud Date: 10/06/59 Completion: 10/18/59

Section 34, Township 26 South, Range 32 East

Lea County, NM



QUAY VALLEY, INC.
JULY, 1996

Bobby Gray/Gray Pumping
915/943-4397

NEMU #49

Status	(POW) Formerly: Elliot Federal #2
County & State	Lea County, New Mexico
Spud Date:	10/06/59
Completion	10/18/59
Total Depth	4,548'
Surface Casing	8 5/8" @ 301' 200 sx TOC: Surface Hole Size: 11"
Production Casing	4 1/2" @ 4,547' 125 sx TOC: ? Hole Size: 6 3/4"
Tubing Size	2 3/8" @ 4,436'
Perforations	4,458'-4,480'
Packer Size & Type	
Bridge Plug, If one	

Quay Valley, INC

North El Mar Unit #53

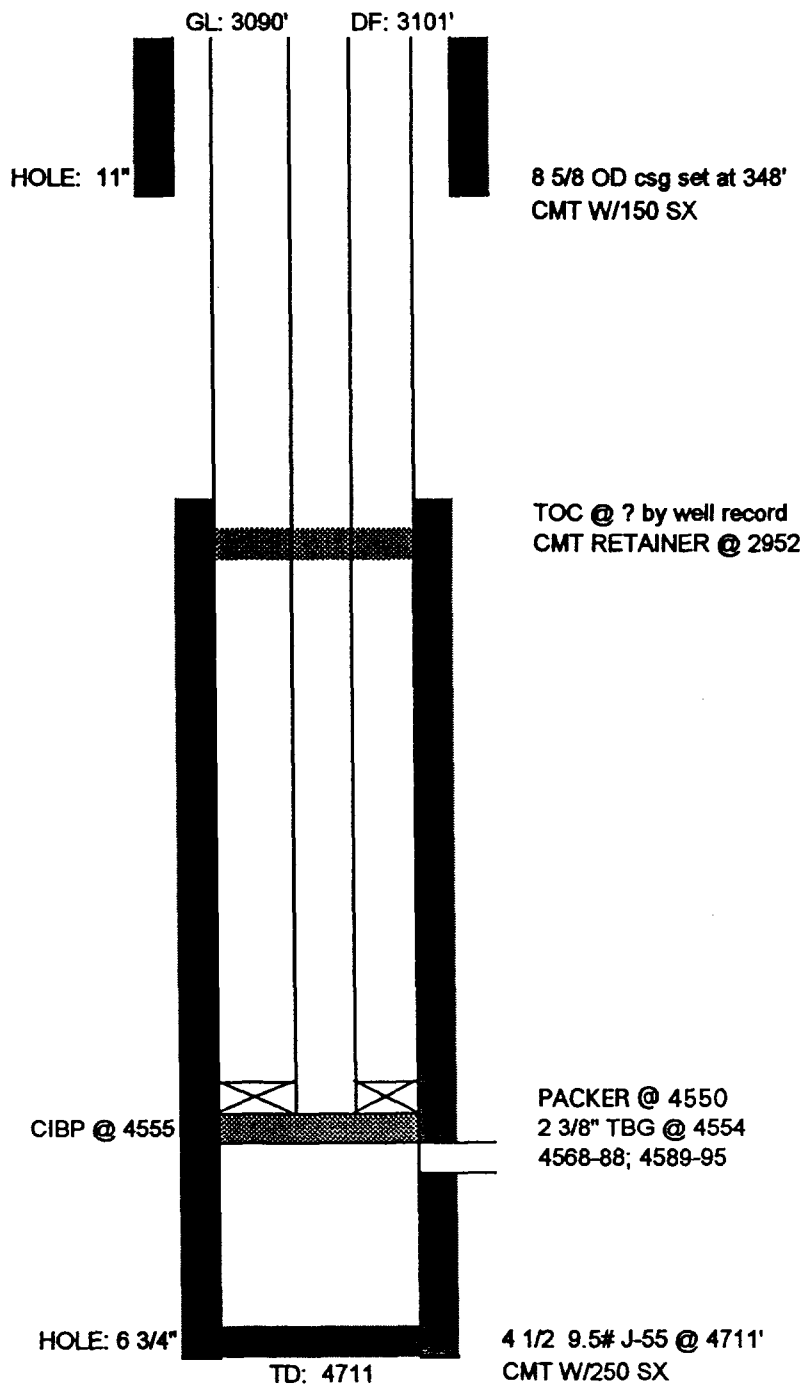
FORMERLY KERN COUNTY LAND STATE 36 #4

(AP# 30-025-083170)

542' FSL & 330' FNL

Spud Date: 7/11/59 Completion: 7/19/59

Section 36, Township 26 South, Range 32 East
Lea County, NM



QUAY VALLEY, INC.
JULY, 1996

Bobby Gray/Gray Pumping
915/943-4397

NEMU #53

Status	(TA) Formerly: State 36 #4
County & State	Lea County, New Mexico
Spud Date:	07/11/59
Completion	07/19/59
Total Depth	4,711'
Surface Casing	8 5/8" @ 348' 150 sx TOC: ? Hole Size: 11"
Production Casing	4 1/2" @ 4,711' 250 sx TOC: ? Hole Size: 6 3/4"
Tubing Size	2 3/8" @ 4,554'
Perforations	4,568'-88', 4,589'-95'
Packer Size & Type	@ 4,550'
Bridge Plug, If one	Elder 4 12" CIBP @ 4,555' Elder 4 1/2" Cement Retainer @ 2,952'

Quay Valley, INC

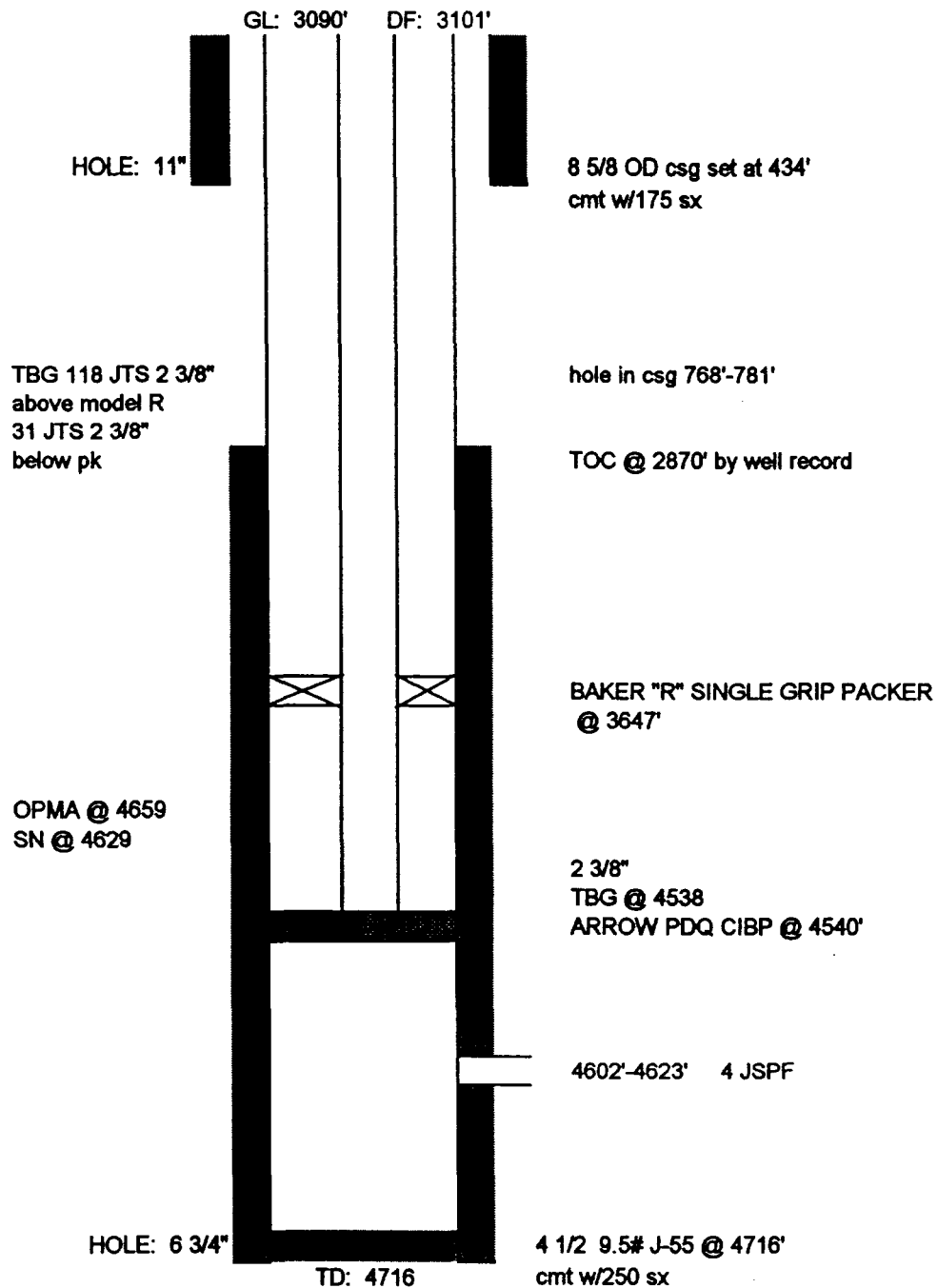
North El Mar Unit #55

FORMERLY KERN COUNTY LAND STATE 36 #6

(API# 30-025-083190)

544' FSL & 1448' FEL
Section 36, Township 26 South, Range 32 East
Lea County, NM

Spud Date: 12/05/59 Completion: 12/13/59



QUAY VALLEY, INC.
JULY, 1996

Bobby Gray/Gray Pumping
915/943-4397

NEMU #55

Status	(TA) Formerly: State 36 #6
County & State	Lea County, New Mexico
Spud Date:	12/05/59
Completion	12/13/59
Total Depth	4,716'
Surface Casing	8 5/8" @ 434' 175 sx TOC: Surface (?) Hole Size: 11"
Production Casing	4 1/2" @ 4,716' 250 sx TOC: ? Hole Size: 6 3/4"
Tubing Size	2 3/8" @ 4,538'
Perforations	4,602'-23'
Packer Size & Type	Baker "R" Single grip @ 3,647'
Bridge Plug, If one	Arrow "PDQ" CIBP @ 4,540'

Quay Valley, INC

North El Mar Unit #56
FORMERLY CONTINENTAL OIL PAYNE #9
(NMOCD #7, API# 30-025-084380)

1935' FNL & 330' FWL
Section 31, Township 26 South, Range 33 East
Lea County, NM

Spud Date: 4/20/60 Completion: 4/29/60

