

Northwest of the West Corbin Federal #4

Picture taken on July 15, 1998 by Ryan Lunsford, Summer Intern Engineer.

The entire proposed Corbin Delaware Federal Unit area was personally inspected by Ryan Lunsford and Monty Myers, Summer Intern Engineers for Burlington Resources Oil & Gas Company.

No fresh water wells were found within the proposed boundaries of the Corbin Delaware Federal Unit.

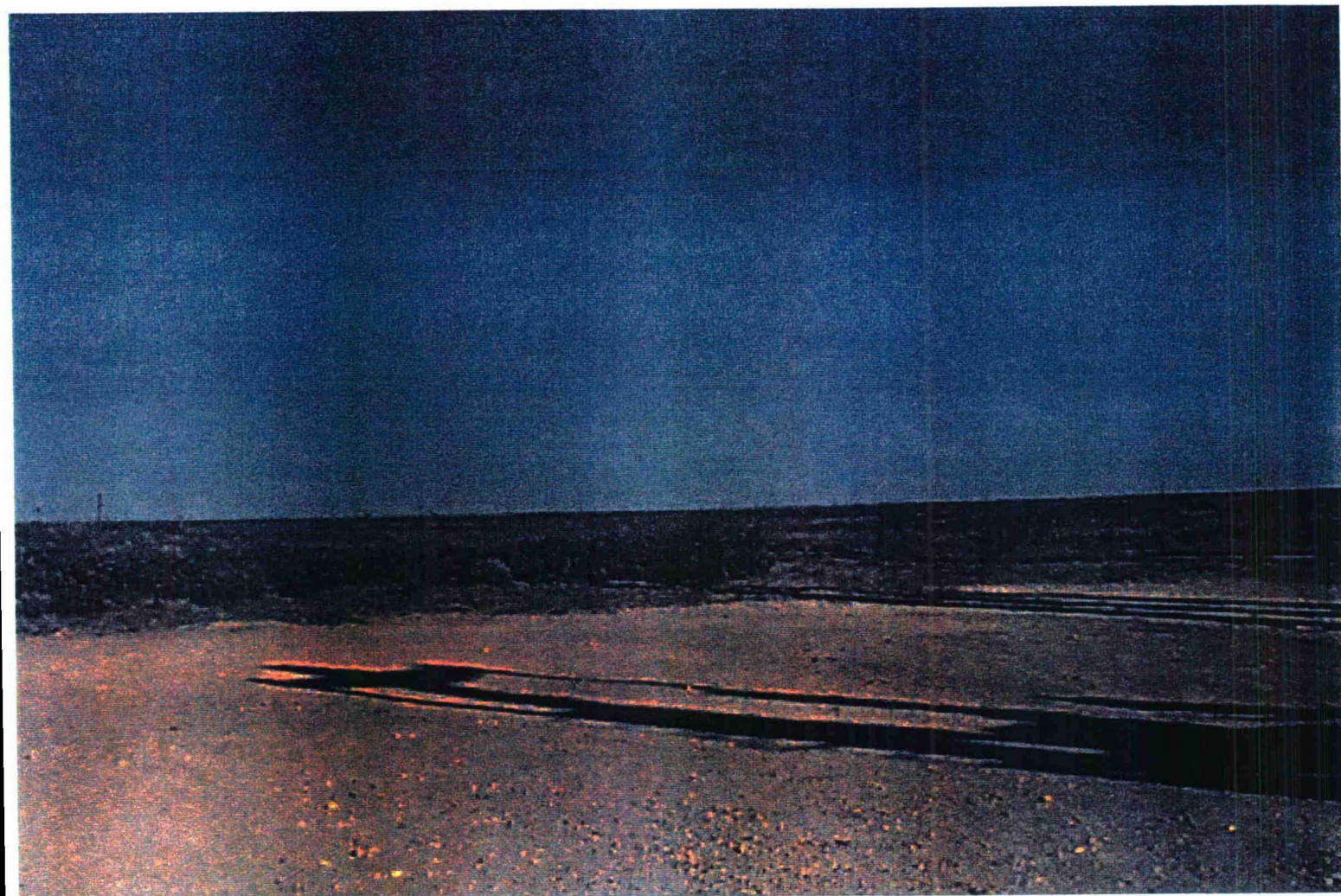


North of the West Corbin Federal #6

Picture taken on July 15, 1998 by Ryan Lunsford, Summer Intern Engineer.

The entire proposed Corbin Delaware Federal Unit area was personally inspected by Ryan Lunsford and Monty Myers, Summer Intern Engineers for Burlington Resources Oil & Gas Company.

No fresh water wells were found within the proposed boundaries of the Corbin Delaware Federal Unit.

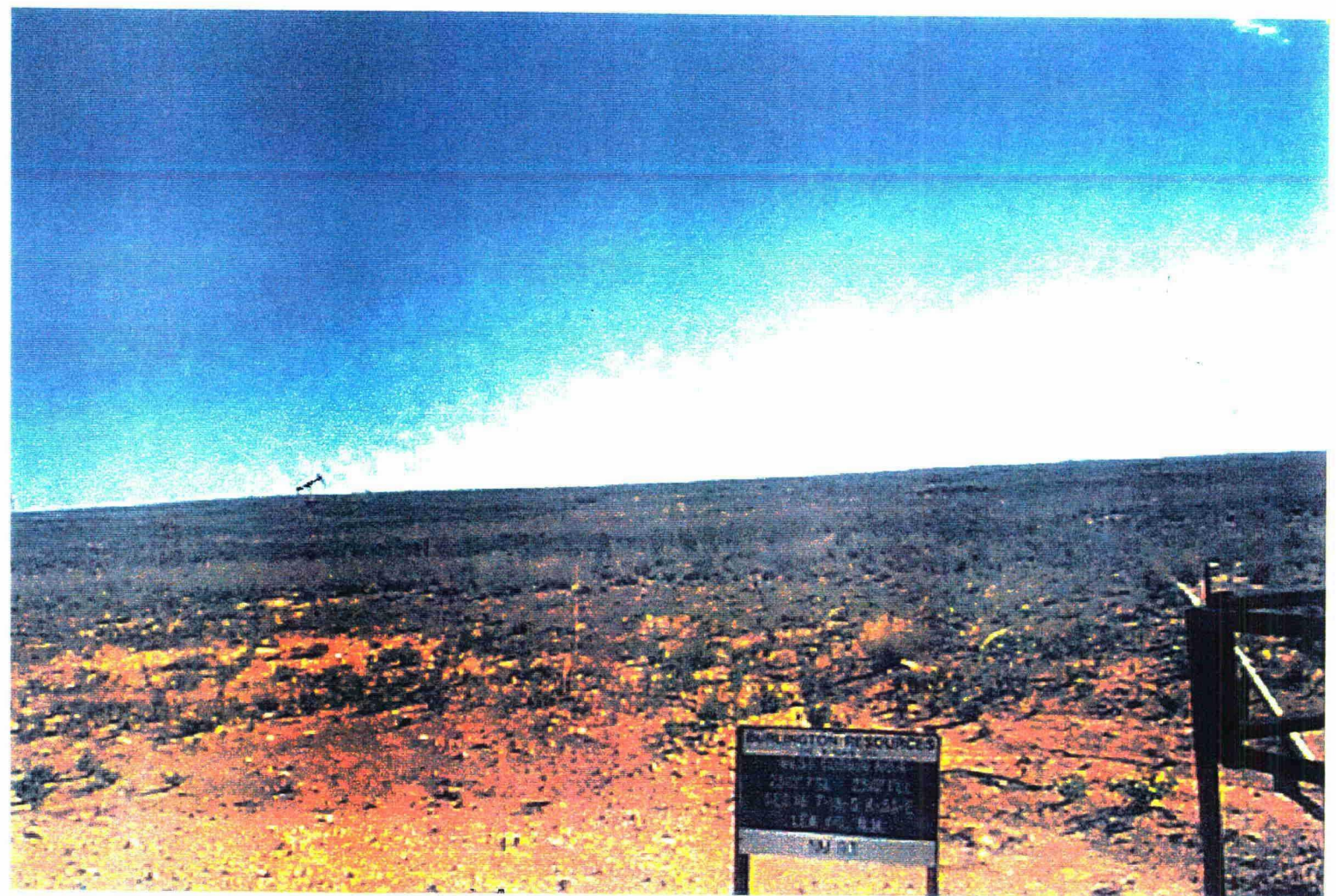


West of the West Corbin Federal #6

Picture taken on July 15, 1998 by Ryan Lunsford, Summer Intern Engineer.

The entire proposed Corbin Delaware Federal Unit area was personally inspected by Ryan Lunsford and Monty Myers, Summer Intern Engineers for Burlington Resources Oil & Gas Company.

No fresh water wells were found within the proposed boundaries of the Corbin Delaware Federal Unit.

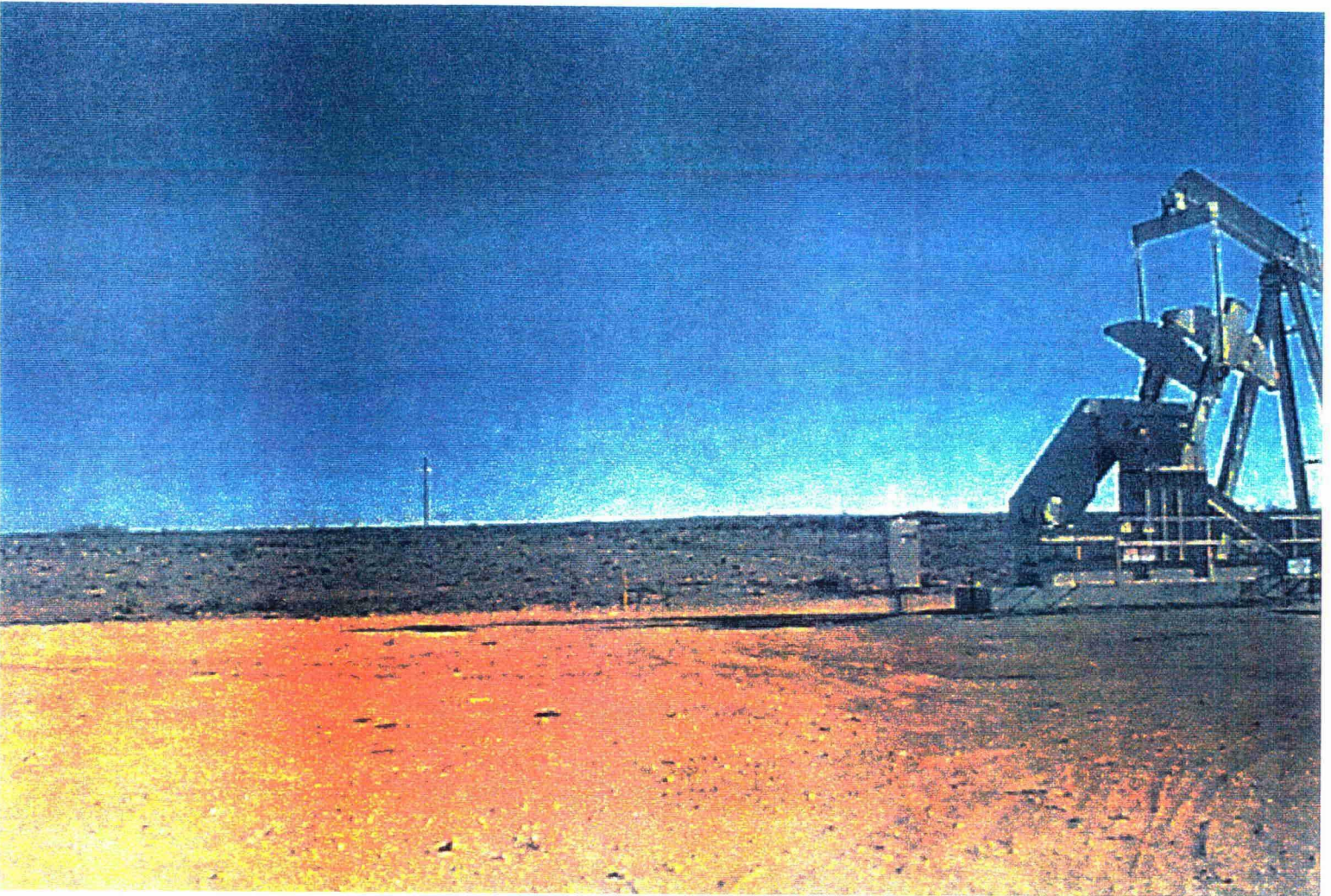


Northeast of the West Corbin Federal #6

Picture taken on July 15, 1998 by Ryan Lunsford, Summer Intern Engineer.

The entire proposed Corbin Delaware Federal Unit area was personally inspected by Ryan Lunsford and Monty Myers, Summer Intern Engineers for Burlington Resources Oil & Gas Company.

No fresh water wells were found within the proposed boundaries of the Corbin Delaware Federal Unit.



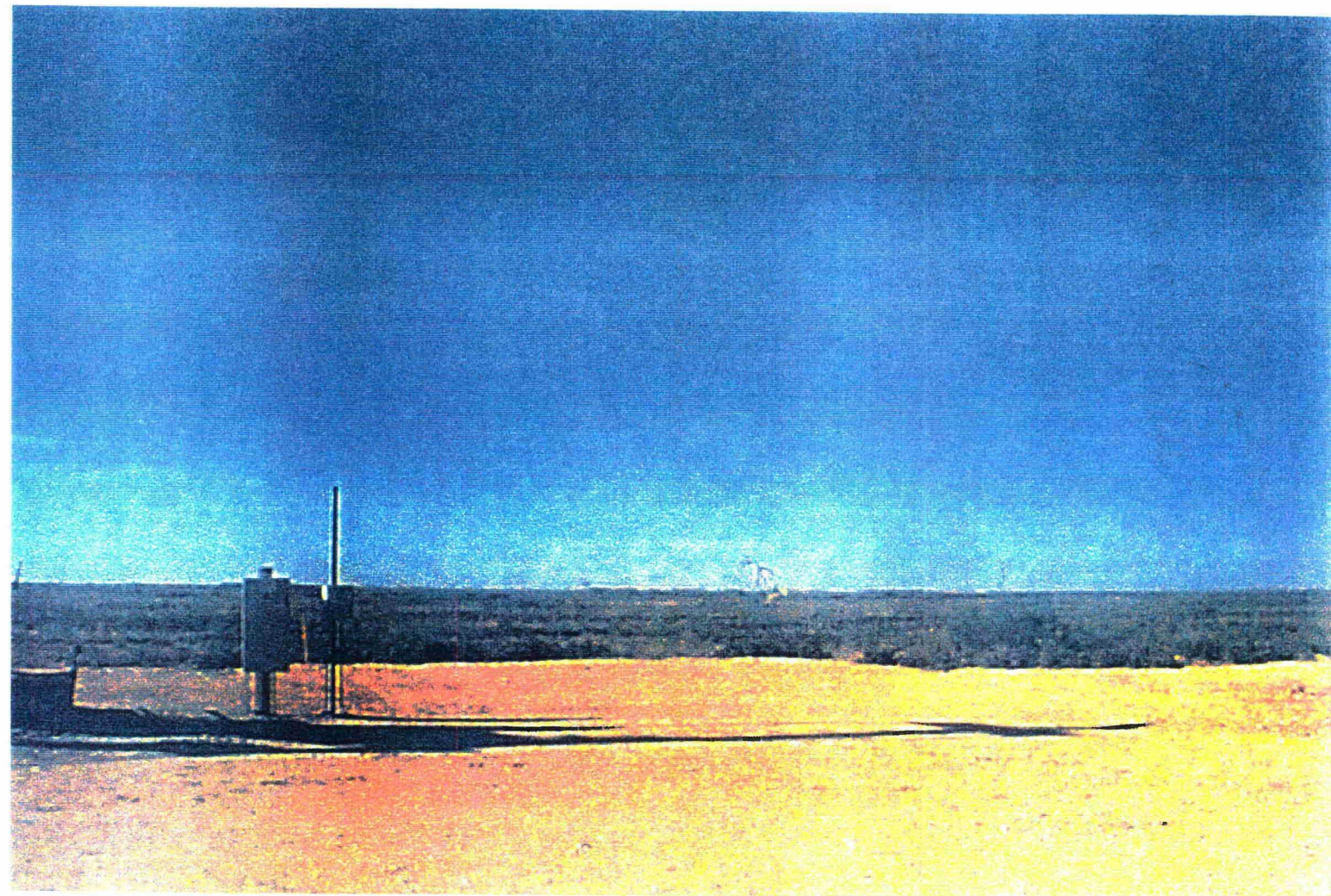
North of the West Corbin Federal #15

Picture taken on July 15, 1998 by Ryan Lunsford, Summer Intern Engineer.

The entire proposed Corbin Delaware Federal Unit area was personally inspected by Ryan Lunsford and Monty Myers, Summer Intern Engineers for Burlington Resources Oil & Gas Company.

No fresh water wells were found within the proposed boundaries of the Corbin Delaware Federal Unit.

**FORM C-108
ITEM NO. XI**

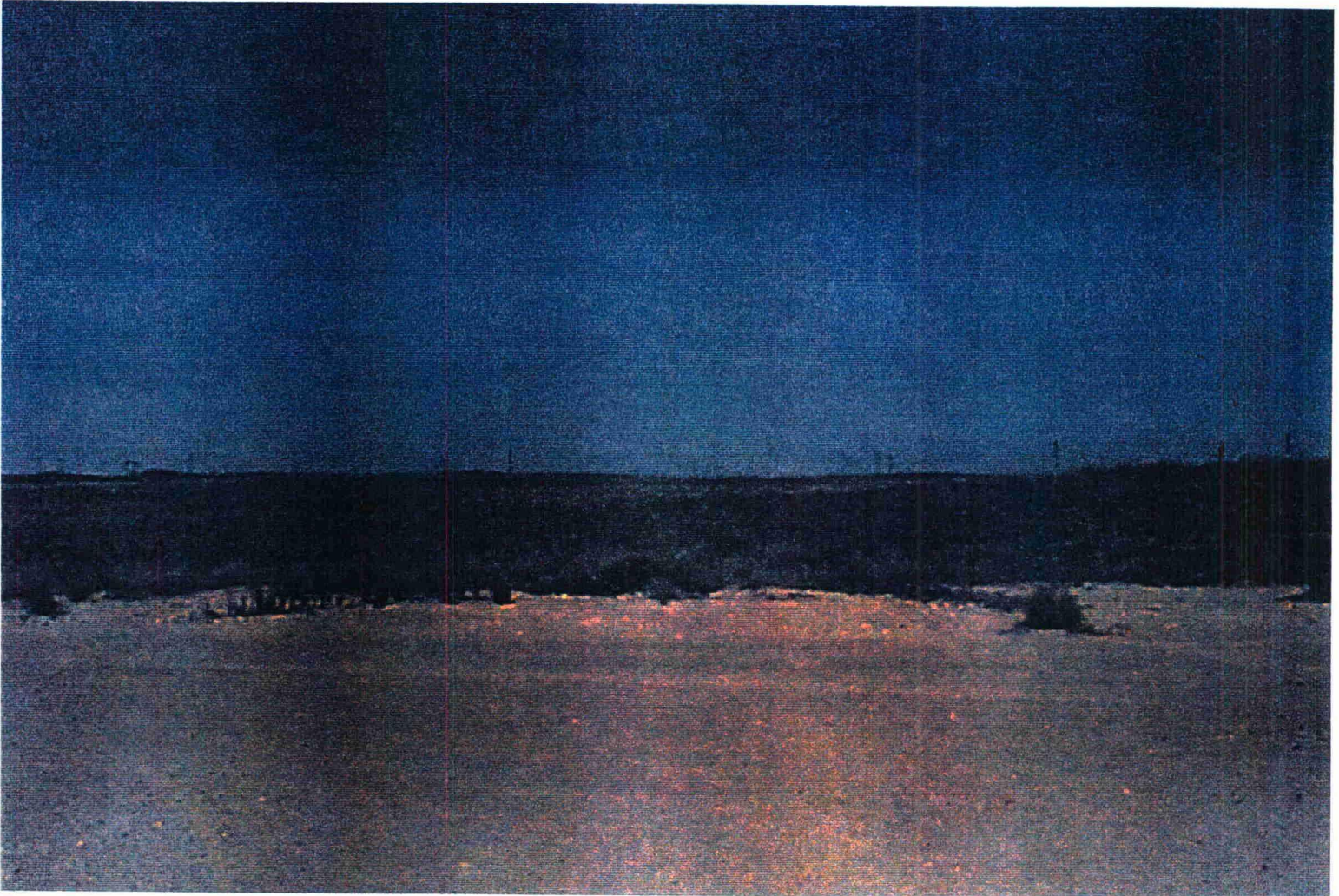


South of the West Corbin Federal #15

Picture taken on July 15, 1998 by Ryan Lunsford, Summer Intern Engineer.

The entire proposed Corbin Delaware Federal Unit area was personally inspected by Ryan Lunsford and Monty Myers, Summer Intern Engineers for Burlington Resources Oil & Gas Company.

No fresh water wells were found within the proposed boundaries of the Corbin Delaware Federal Unit.

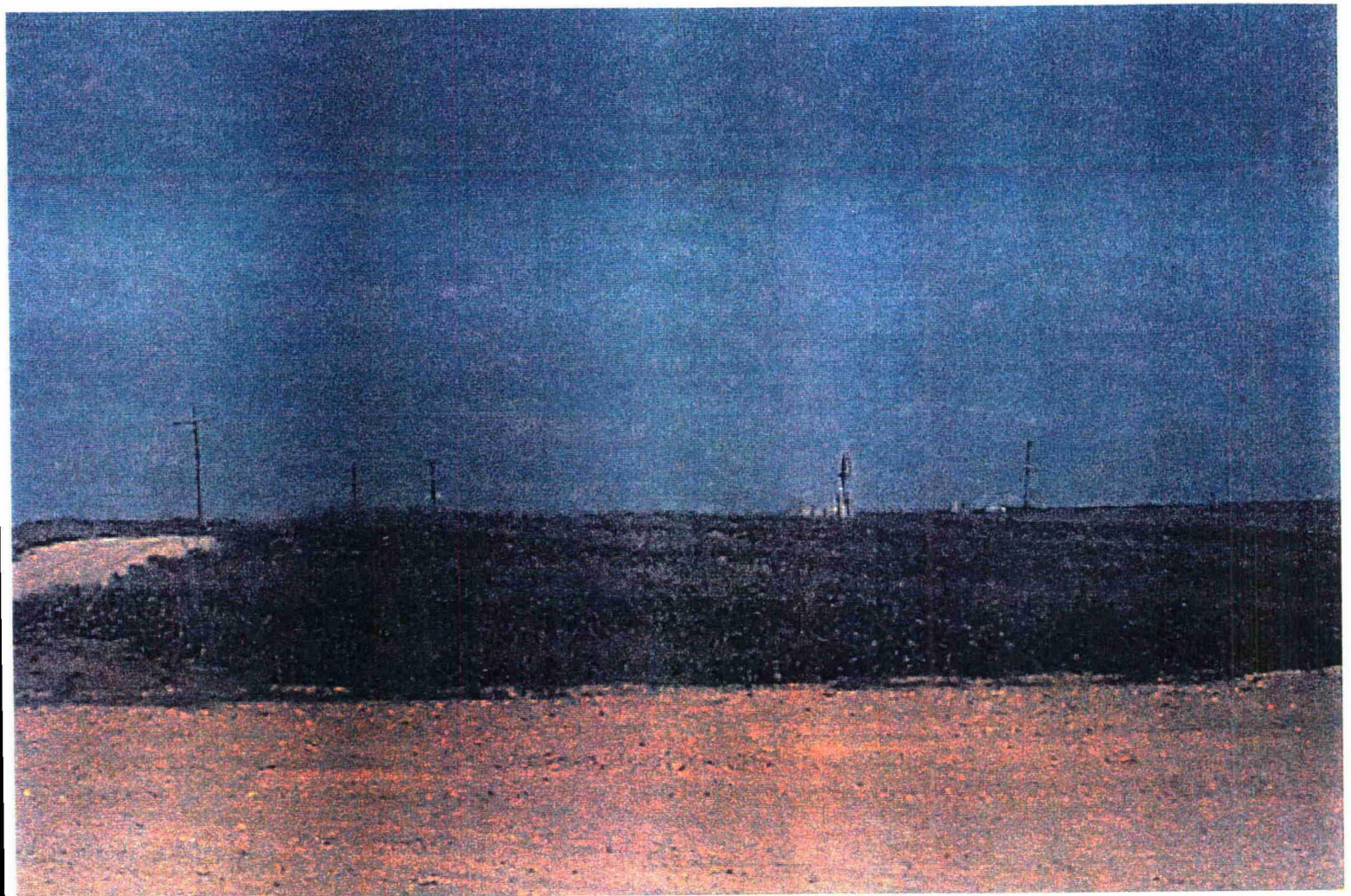


West of the West Corbin Federal #15

Picture taken on July 15, 1998 by Ryan Lunsford, Summer Intern Engineer.

The entire proposed Corbin Delaware Federal Unit area was personally inspected by Ryan Lunsford and Monty Myers, Summer Intern Engineers for Burlington Resources Oil & Gas Company.

No fresh water wells were found within the proposed boundaries of the Corbin Delaware Federal Unit.

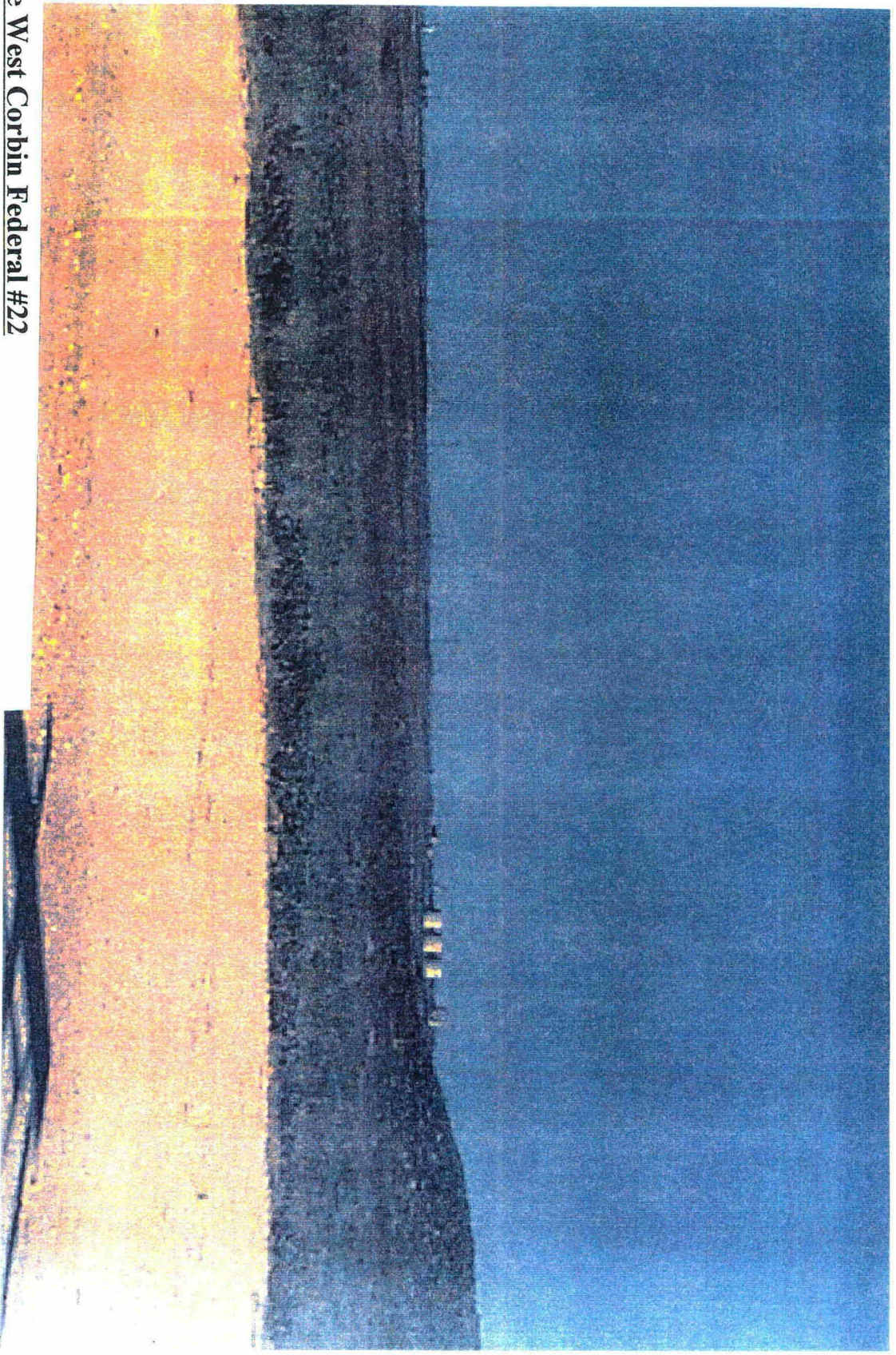


West of the West Corbin Federal #22

Picture taken on July 15, 1998 by Ryan Lunsford, Summer Intern Engineer.

The entire proposed Corbin Delaware Federal Unit area was personally inspected by Ryan Lunsford and Monty Myers, Summer Intern Engineers for Burlington Resources Oil & Gas Company.

No fresh water wells were found within the proposed boundaries of the Corbin Delaware Federal Unit.

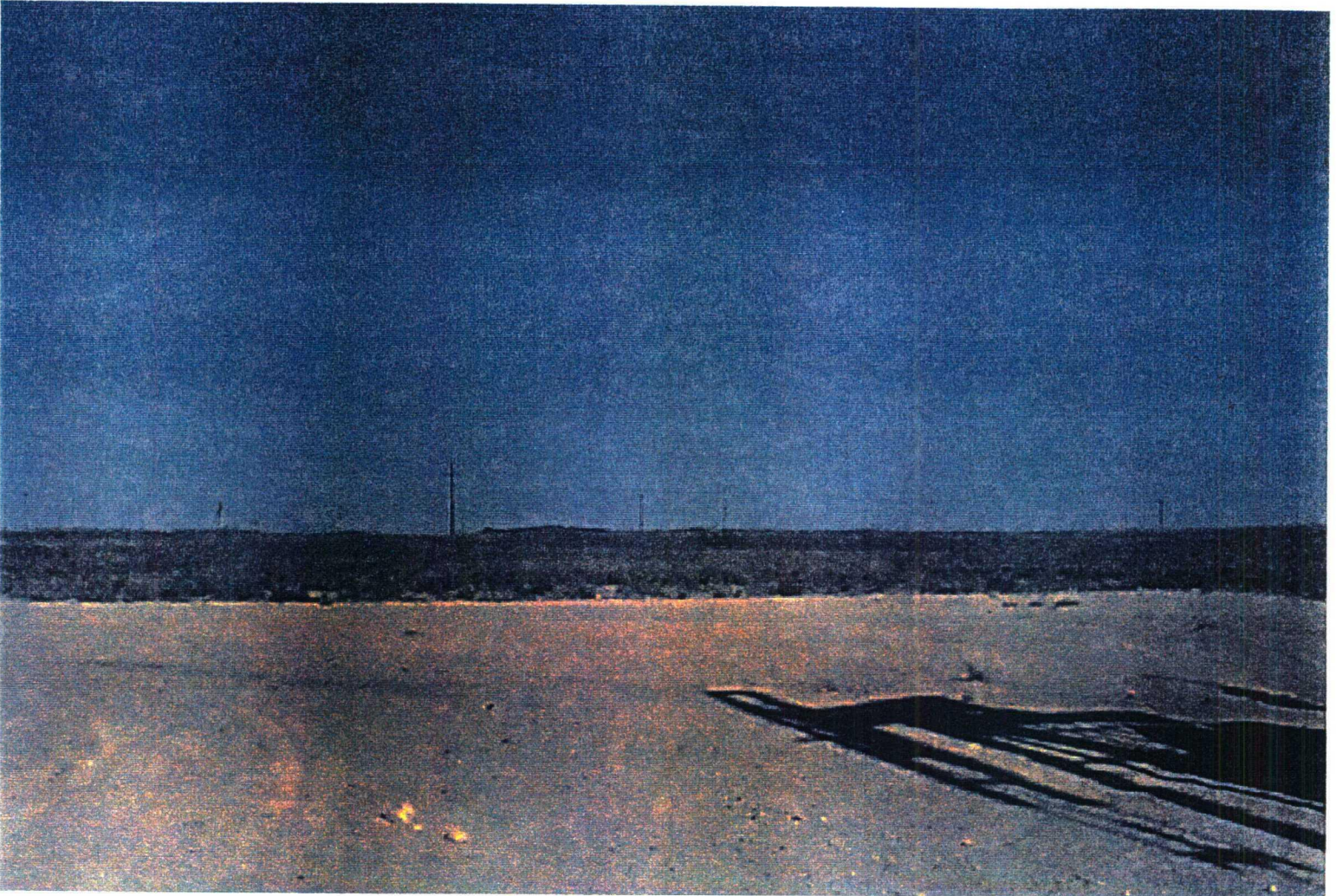


Northwest of the West Corbin Federal #22

Picture taken on July 15, 1998 by Ryan Lunsford, Summer Intern Engineer.

The entire proposed Corbin Delaware Federal Unit area was personally inspected by Ryan Lunsford and Monty Myers, Summer Intern Engineers for Burlington Resources Oil & Gas Company.

No fresh water wells were found within the proposed boundaries of the



West of the West Corbin Federal #24

Picture taken on July 15, 1998 by Ryan Lunsford, Summer Intern Engineer.

The entire proposed Corbin Delaware Federal Unit area was personally inspected by Ryan Lunsford and Monty Myers, Summer Intern Engineers for Burlington Resources Oil & Gas Company.

No fresh water wells were found within the proposed boundaries of the Corbin Delaware Federal Unit.

C-108
ITEM NO. XIV

**Corbin Delaware Federal Unit
Eddy County, New Mexico**

Notification list of affected offsets within a one-half mile radius of well #'s 4, 6, & 22.

T-18-S, R-33-E, N.M.P.M.
Eddy County, New Mexico

Section 7: All

Section 8: SW/4

Section 17: NW/4

Working Interest

Central Resources, Inc.
1775 Sherman St., Suite 2600
Denver, CO 80203

RKC, Inc.
1527 Hillside Rd.
Fairfield, CT 06430

Santa Fe Energy Resources, Inc.
500 W Texas, Suite 1330
Midland, TX 79701

Overriding Royalty Interest

Altura Energy, LTD
P.O. Box 4294
Houston, TX 77210

Constance P. Classen
5 Ridgeview Circle
Richardson, TX 75080

Gene Day Costello
3336 Remington Drive
Plano, TX 75023

George Edward Day IV
255 Gallaway Park Drive
Decatur, IL 62521

Leigh P. Wilber
1014 Western Ave.
Northbrook, IL 60062

Christine P. Wiseman
400 S. Glenwood
Springfield, IL 62702

Lynn P. Yedinak
814 S. Adams
Hinsdale, IL 60521

Section 18: E/2 NE/4 & E/2 SE/4

Working Interest

Central Resources, Inc.
1775 Sherman St., Suite 2600
Denver, Colorado 80203

RKC, Inc.
1527 Hillside Rd.
Fairfield, CT 06430

Section 18: W/2 NE/4

Working Interest

Santa Fe Energy Resources, Inc.
500 W Texas, Suite 1330
Midland, TX 79701

Overriding Royalty Interest

Altura Energy, LTD
P.O. Box 4294
Houston, TX 77210

Net Profits Overriding Royalty Interest

TCW DR II Royalty Partnerships
865 South Figueroa, Suite 1800
Los Angeles, CA 90017

Section 18: W/2 SE/4, Lots 1,2,3,4, E/2 SW/4 & E/2 NW/4

Working Interest

Central Resources, Inc.
1775 Sherman St., Suite 2600
Denver, Colorado 80203

RKC, Inc.
1527 Hillside Rd.
Fairfield, CT 06430

Santa Fe Energy Resources, Inc.
500 W Texas, Suite 1330
Midland, TX 79701

Overriding Royalty Interest

Altura Energy, LTD
P.O.Box 4294
Houston, TX 77210

Net Profits Overriding Royalty Interest

TCW DR II Royalty Partnerships
865 South Figueroa, Suite 1800
Los Angeles, CA 90017

Section 17: N/2 NE/4

Working Interest

Central Resources, Inc.
1775 Sherman St., Suite 2600
Denver, Co 80203

RKC, Inc.
1527 Hillside Rd.
Fairfield, Ct 06430

Section 17: S/2 NE/4

Working Interest

Central Resources, Inc.
1775 Sherman St., Suite 2600
Denver, Co 80203

RKC, Inc.
1527 Hillside Rd.
Fairfield, Ct 06430

Santa Fe Energy Resources, Inc.
500 W Texas, Suite 1330
Midland, TX 79701

Section 17: NW/4 SW/4 & S/2 SW/4**Working Interest**

Burlington Resources Oil & Gas Co.
3300 North "A" St., Bldg. 6
Midland, TX 79705

Section 17: NE/4 SW/4 & NW/4 SE/4**Working Interest**

J.M. Huber Cooperation
1900 West Loop S. Suite, 1600
Houston, TX 77027

Maralo Inc.
P.O. Box 832
Midland, TX 79702

Section 7: S/2 S/2**Section 17: W/2****Section 18: all****Surface Ownership**

Federal Lands Leased To:
Herschel Caviness
Star Route
Causey, NM 88113