

DISTRICT I
P.O. Box 1880, Hobbs, NM 88241-1880

DISTRICT II
P.O. Box 88, Artesia, NM 88211-0718

DISTRICT III
10820 E. Branson Rd., Aztec, NM 87410

DISTRICT IV
P.O. Box 2088, Santa Fe, N.M. 87504-2088

State of New Mexico
Energy, Minerals and Natural Resources Department

Form C-102
Revised February 10, 1994
Submit to Appropriate District Office
State Lease - 4 Copies
Fee Lease - 3 Copies

OIL CONSERVATION DIVISION
P.O. Box 2088
Santa Fe, New Mexico 87504-2088

☐ AMENDED REPORT

WELL LOCATION AND ACREAGE DEDICATION PLAT

API Number	Pool Code	Pool Name
		Eagle Creek, Morrow
Property Code	Property Name	Well Number
	EAGLE CREEK 11	1
GRID No.	Operator Name	Elevation
015742	NEARBURG PRODUCING COMPANY	3498

Surface Location

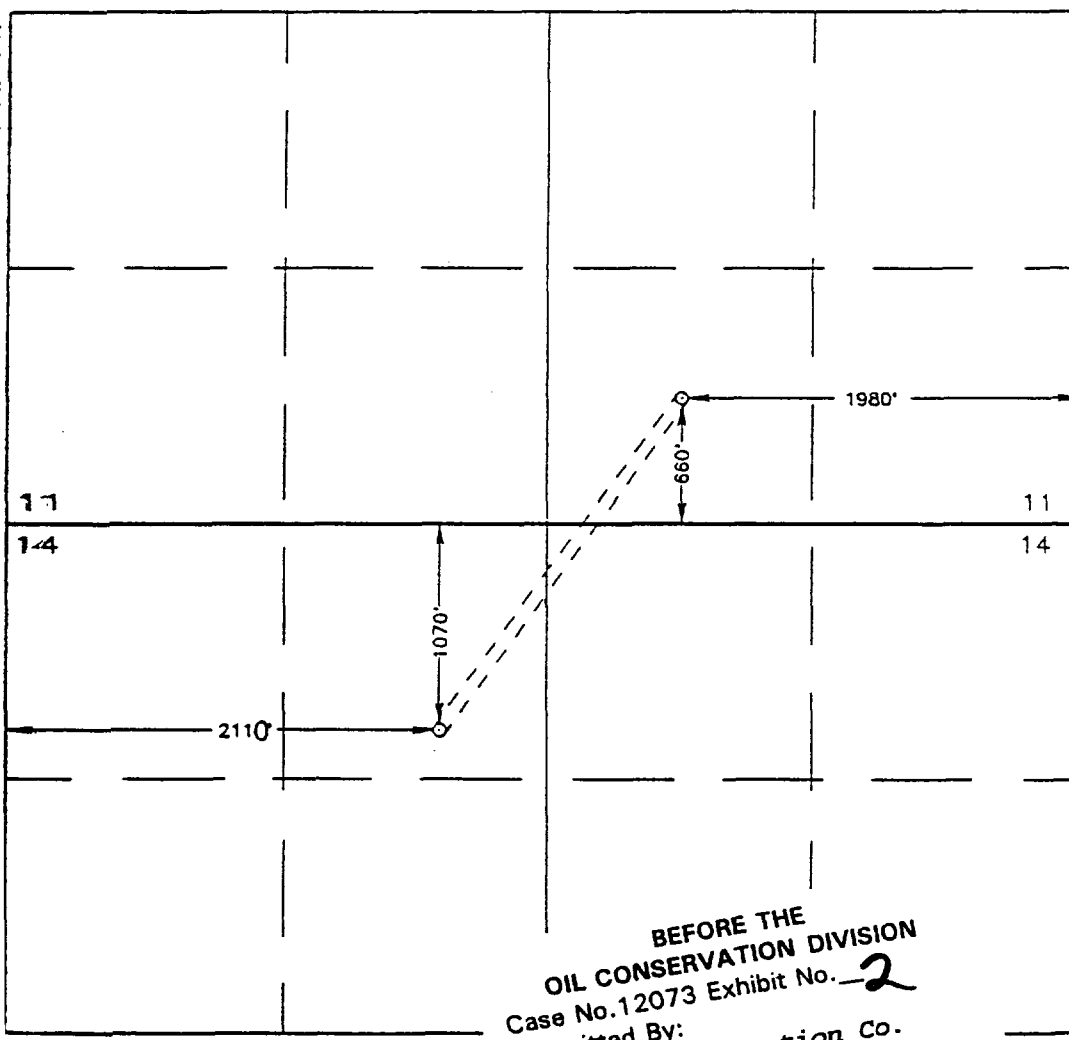
UCL or lot No.	Section	Township	Range	Lot Idn	Feet from the	North/South line	Feet from the	East/West line	County
C	14	17 S	25 E		1070	NORTH	2110	WEST	EDDY

Bottom Hole Location If Different From Surface

UCL or lot No.	Section	Township	Range	Lot Idn	Feet from the	North/South line	Feet from the	East/West line	County
O	11	17 S	25 E		660	SOUTH	1980	EAST	EDDY

Dedicated Acres	Joint or Infill	Consolidation Code	Order No.
320	J		

NO ALLOWABLE WILL BE ASSIGNED TO THIS COMPLETION UNTIL ALL INTERESTS HAVE BEEN CONSOLIDATED
OR A NON-STANDARD UNIT HAS BEEN APPROVED BY THE DIVISION



OPERATOR CERTIFICATION

I hereby certify the the information
contained herein is true and complete to the
best of my knowledge and belief.

Signature

E. Scott Kimbrough
Printed Name

Mgr Drilling & Production
Title

10/27/98
Date

SURVEYOR CERTIFICATION

I hereby certify that the well location shown
on this plat was plotted from field notes of
actual surveys made by me or under my
supervision, and that the same is true and
correct to the best of my belief.

SEPTEMBER 17, 1998

Date Surveyed

DMCC

Signature of State
Professional Surveyor

NEW MEXICO
Professional Surveyor
9-23-98
98-11-1262

Certificate No. RONALD EIDSON 3239
DARY EIDSON 12641
MICHAEL McDONALD 12185

BEFORE THE
OIL CONSERVATION DIVISION
Case No. 12073 Exhibit No. 2
Submitted By:
Nearburg Exploration Co.
Hearing Date: November 5, 1998

District I
PO Box 1939, Hobbs, NM 88241-1980

State of New Mexico
Energy, Minerals & Natural Resources Department

Form C-101

Revised October 18, 1994

District II
200 South First, Artesia, NM 88210

Instructions on back

District III
2000 Rio Brazos Rd., Aztec, NM 87410

Submit to Appropriate District Office

District IV
2000 South Pacheco, Santa Fe, NM 87505

OIL CONSERVATION DIVISION

2040 South Pacheco

Santa Fe, NM 87505

State Lease - 6 Copies

Fee Lease - 5 Copies

☐ AMENDED REPORT

APPLICATION FOR PERMIT TO DRILL, RE-ENTER, DEEPEN, PLUGBACK, OR ADD A ZONE

Operator Name and Address Nearburg Producing Company 3300 N A St., Bldg 2, Suite 120 Midland, TX 79705		OGRID Number 015742
		API Number 30 - 0
Property Code	Property Name Eagle Creek 11	Well No. 1

Surface Location

BL or lot no.	Section	Township	Range	Lot Idn	Feet from the	North/South line	Feet from the	East/West Line	County
C	14	17S	25E		1070	North	2110	West	Eddy

Proposed Bottom Hole Location If Different From Surface

BL or lot no.	Section	Township	Range	Lot Idn	Feet from the	North/South line	Feet from the	East/West Line	County
O	11	17S	25E		660	South	1980	East	Eddy

Proposed Pool 1 Eagle Creek, Morrow	Proposed Pool 2
--	-----------------

Work Type Code N	Well Type Code G	Cable/Rotary R	Lease Type Code P	Ground Level Elevation 3498
Multiple No	Proposed Depth 8100	Formation Morrow	Contractor Peterson	Spud Date 11-15-98

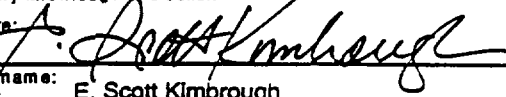
Proposed Casing and Cement Program

Hole Size	Casing Size	Casing weight/foot	Setting Depth	Sacks of Cement	Estimated TOC
17-1/2"	13-3/8"	48#	300'	500 sxs	Circ to surface
12-1/4"	8-5/8"	24#	1,200'	775 sxs	Circ to surface
7-7/8"	5-1/2"	17# & 20#	8,100'	2000 sxs	Circ to surface

Describe the proposed program. If this application is to DEEPEN or PLUG BACK give the data on the present productive zone and proposed new productive zone. Describe the blowout prevention program, if any. Use additional sheets if necessary.

Propose to drill from 1,070' FNL & 2,100' FWL, Section 14-T17S-R25E to 660' FWL & 1,980' FEL, Section 11-T17S-R25E, Eddy County, New Mexico to sufficient depth to evaluate the Morrow formation. After reaching TD, logs will be run and casing set if the evaluation is positive. Perforate, test and stimulate as necessary to establish production.

I hereby certify that the information given above is true and complete to the best of my knowledge and belief.

Signature: 
Printed name: E. Scott Kimbrough

Title: Manager of Drilling and Production

Date: 10-27-98

Phone: 915/686-8235

OIL CONSERVATION DIVISION

Approved By:

Title:

Approval Date:

Expiration Date:

Conditions of Approval:

Attached: ☐

SEC. 14 TWP. 17-S RGE. 25-E

SURVEY N.M.P.M.

COUNTY EDDY

DESCRIPTION 1070' FNL & 2110' FWL

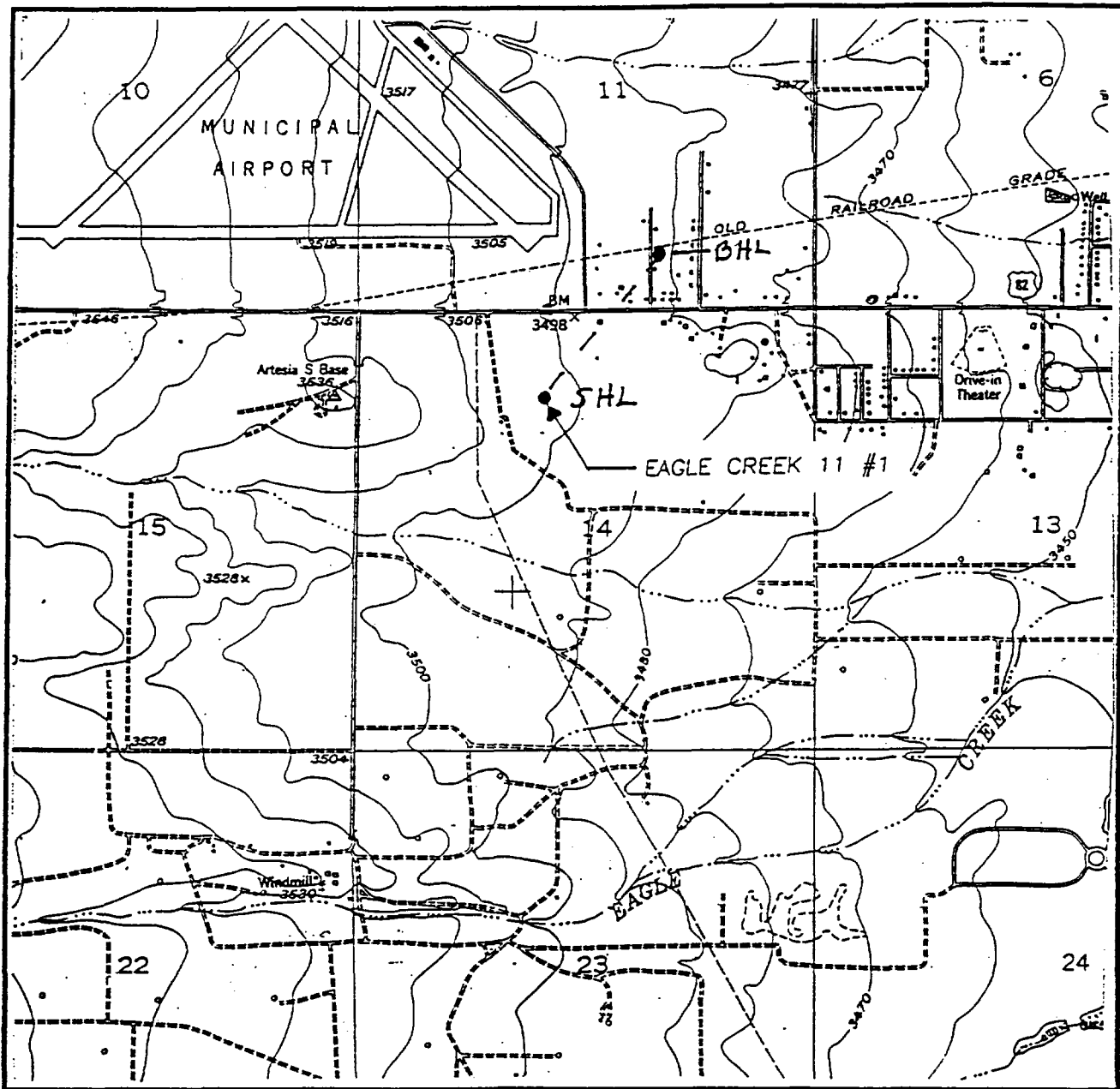
ELEVATION 3498

OPERATOR EAGLE CREEK 11

LEASE NEARBURG PRODUCING COMPANY

**JOHN WEST ENGINEERING
HOBBS, NEW MEXICO
(505) 393-3117**

LOCATION VERIFICATION MAP



SCALE: 1" = 2000'

CONTOUR INTERVAL:
ARTESIA - 10'

SEC. 14 TWP. 17-S RGE. 25-E

SURVEY N.M.P.M.

COUNTY EDDY

DESCRIPTION 1070' FNL & 2110' FWL

ELEVATION 3498

OPERATOR EAGLE CREEK 11

LEASE NEARBURG PRODUCING COMPANY

U.S.G.S. TOPOGRAPHIC MAP

ARTESIA, N.M.

JOHN WEST ENGINEERING
HOBBS, NEW MEXICO

(505) 393-3117