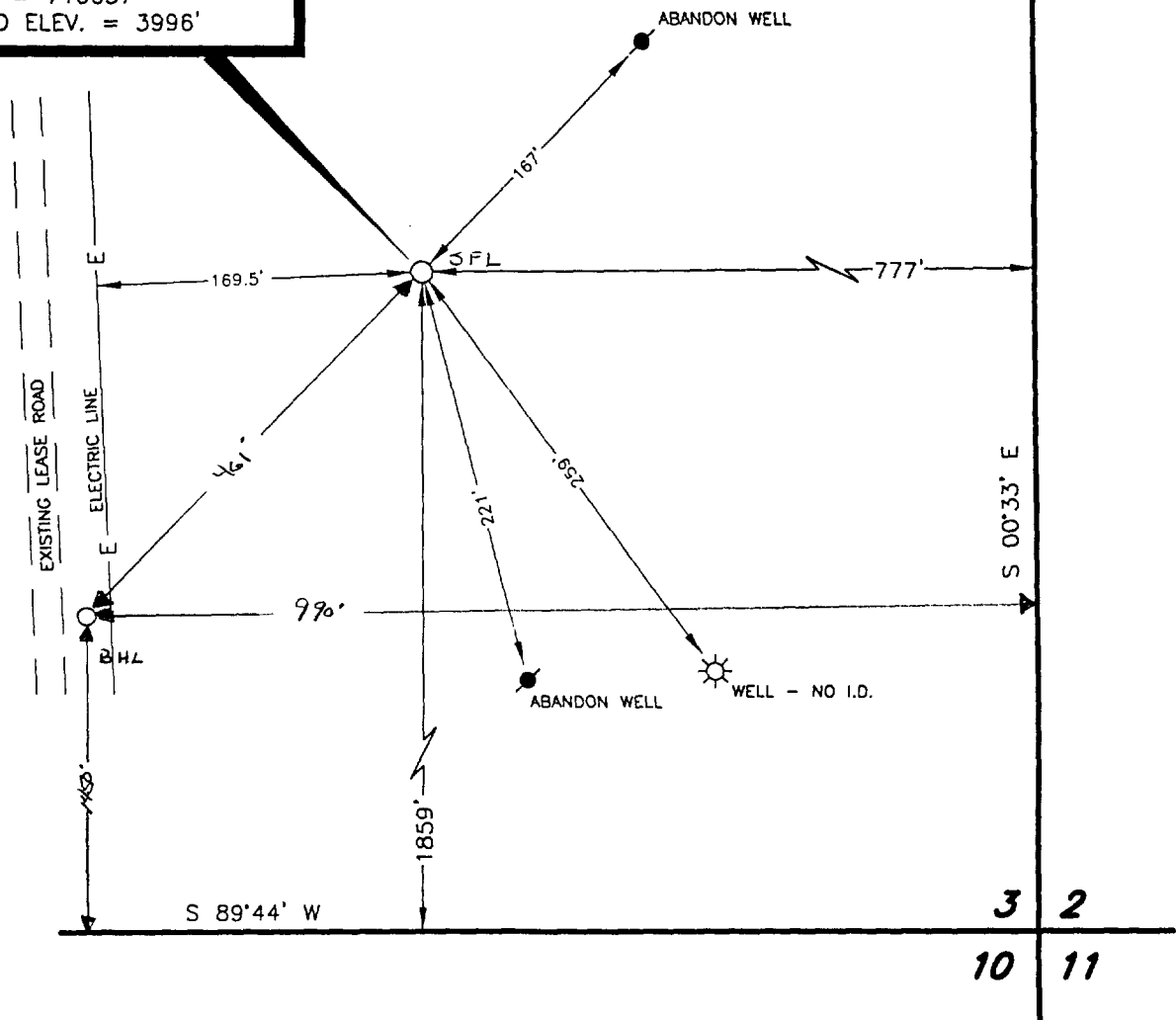


BEARINGS AND COORDINATES BASED ON NEW MEXICO
STATE PLANE GRID - EAST ZONE, NAD 27

COORDINATES DETERMINED BY GPS OBSERVATIONS
USING TRIMBLE PRO-XRS RECEIVER WITH DIFFERENTIAL
CORRECTIONS BY OMNISTAR AND WERE ADJUSTED N 88°04'09" E,
7.73 FEET TO MATCH SEISMIC DATA SUPPLIED BY DAVID
H. ARRINGTON OIL & GAS, INC.

DAVID H. ARRINGTON OIL & GAS, INC.
1 - PARACHUTE ADAMS
X = 774390
Y = 710057
GROUND ELEV. = 3996'



BEFORE THE
OIL CONSERVATION DIVISION
Santa Fe, New Mexico

Case Nos. 12079 & 12080 Exhibit No. 8

Submitted by: David H. Arrington Oil & Gas, Inc.

Hearing Date: November 5, 1998



SCALE: 1" = 100'
0' 50' 100'

SKETCH SHOWING

DAVID H. ARRINGTON OIL & GAS, INC.
1-PARACHUTE ADAMS
1859' FROM THE SOUTH LINE & 777' FROM THE EAST LINE
SECTION 3, T-16-S, R-35-E, N.M.P.M.
LEA COUNTY, NEW MEXICO

				DAVID H. ARRINGTON OIL & GAS, INC.	SCALE: 1" = 100'
					DATE: SEPTEMBER 29, 1998
REVISION	DATE	BY			JOB NO.: 60620-F
SURVEYED BY: R.J.O.				SURVEYING AND MAPPING BY	
DRAWN BY: V.H.B.				TOPOGRAPHIC LAND SURVEYORS	96 NW
APPROVED BY: R.M.R.				MIDLAND, TEXAS	SHEET : 1 OF 1