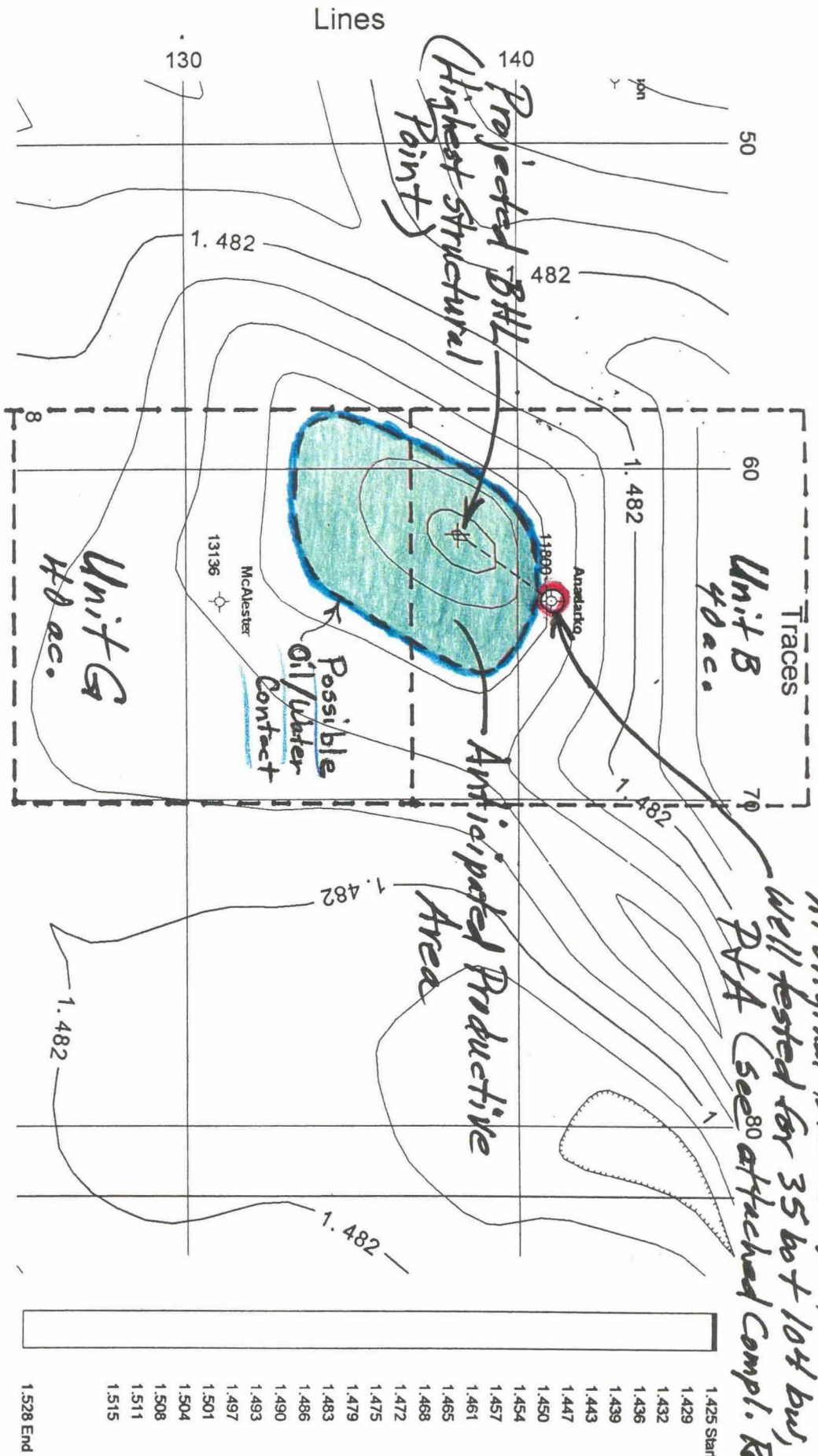


# Horizon STR (Blue) Time Map, Contour STR

23 Feb 2000, 11:24

At original BHL (slightly N. of surf. loc.)  
Well tested for 35 hrs + 104 hrs, was  
PTA (see 80 attached Compl. Report)



## LEGEND

- DRY HOLE
- + PROPOSED BOTTOM HOLE LOCATION
- UNIT B: DRILLING UNIT (APPROX. 40 ACRES) BEFORE THE OIL CONSERVATION DIVISION

Case No. 12378 Exhibit No. 2  
Submitted By:  
Tamarack Petroleum Company  
Hearing Date: April 20, 2000

## TAMARACK PETROLEUM COMPANY, INC.

PROPOSED RE-ENTRY: HOOD 8 # 1

SEC. 8, T17S, R38E, 1EA COUNTY, NEW MEXICO

STRUCTURE: TOP/STRAWN

CONTOUR INTERVAL = 0.002 sec.

Scale: 1" = 500' DATE: 2-23-00