

**R 36 E**

**T 9 S**

**T 10 S**

BLM Lease No. NM-087276

BLM Lease No. LC-065249

NMOCD 320 acre Unit

Reliance Operating Co.  
Federal D No.3  
Plug-back Completion in Atoka 9/98  
Cumulative Prod. through 10/99:  
14758 bc + 230086 mmcf

Pure Oil Co.  
State-Lea M No.1  
Plug-back completion in Atoka 5/70  
Cumulative Prod.: 18243 bc + 176545 mmcf  
Abandoned 7/75

Well locations and depths (ft.):

- 0 ft.
- 0 ft.
- 5 ft.
- 0 ft.
- 10 ft.
- 20 ft.
- 24 ft.
- 18 ft.
- 17 ft.
- 9 ft.
- 20 ft.

Other labels: NDE, 31, 0 ft., 0 ft., 0 ft., 0 ft.

WCB 12/99

R 36 E

T 9 S

T 10 S

BLM Lease No. NM-087276

BLM Lease No. LC-065249

Estimated Gas/Water Contact

NMOC 320 acre Unit

Reliance Operating Co.  
Federal D No.3  
Plug-back Completion in Atoka 9/98  
Cumulative Prod. through 10/99:  
14758 bc + 230086 mmcf

Pure Oil Co.  
State-Lea M No.1  
Plug-back completion in Atoka 5/70  
Cumulative Prod.: 18243 bc + 176545 mmcf  
Abandoned 7/75

**Bahlburg Exploration, Inc.**  
West Crossroads Field Area  
Lea County, New Mexico  
**Middle Atoka Structure Map**  
w/ Productive Atoka Sand Channel Distribution

Scale: 1" = 1000'

C.I.= 50 ft.

WCB 12/99

NDE

NDE

-7155

-7134

-31

-7110

-7056

-7113

-7169

-7200

-7123

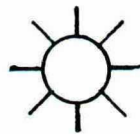
-7207

-7392

-7400

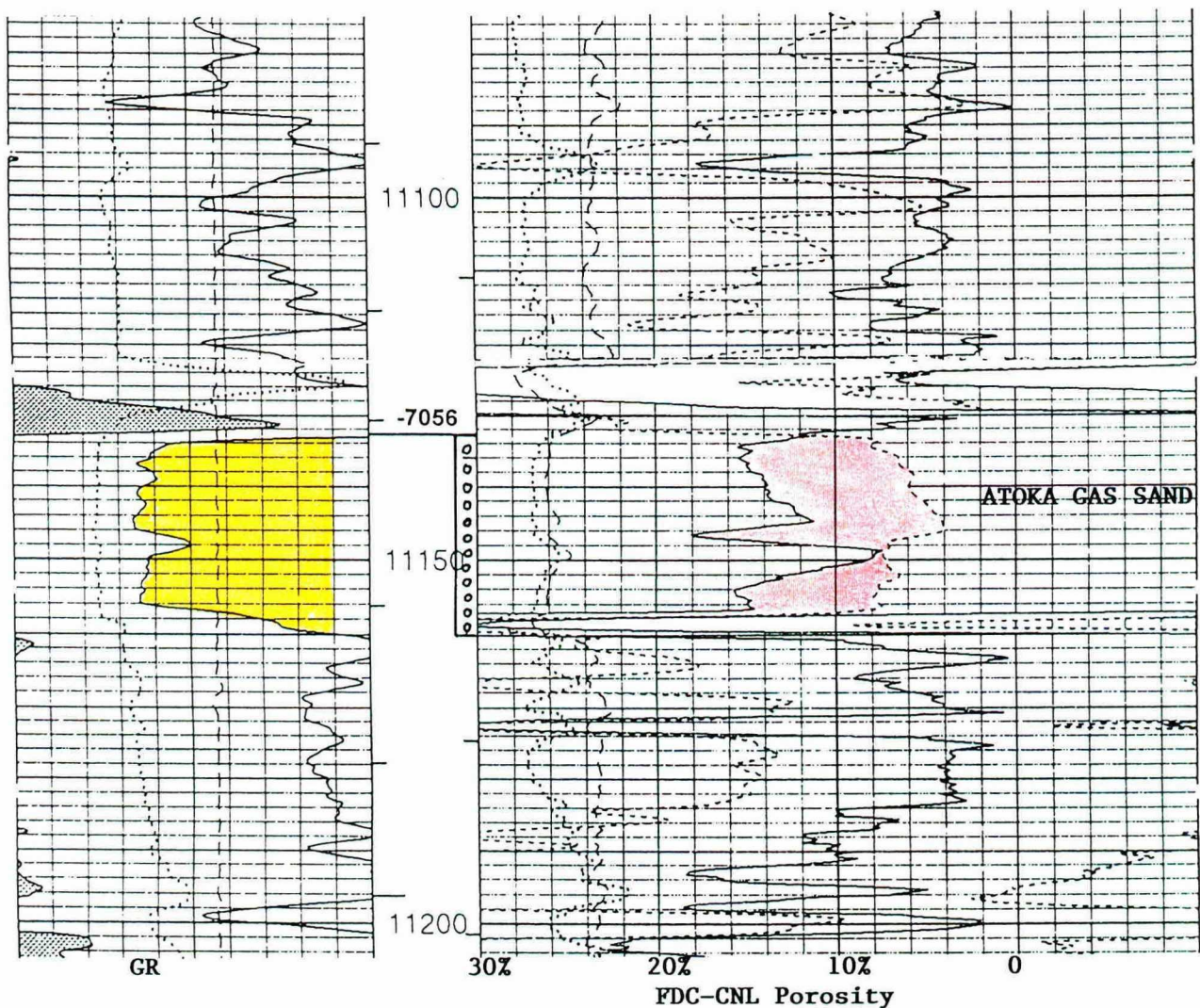
-7282

-7300



Reliance Operating Co.  
Federal D No.3  
1120' fsl & 1420' fel  
Section 31, T9S, R36E  
Lea County, New Mexico

### Neutron-Density Log



Completed Devonian through open-hole 12,003-18' on 10-16-97  
IPF 380 bopd (no wtr)

Plugged back to Atoka on 8-17-98  
Completed Atoka gas sand through perfs 11,133-160' on 8-21-98  
Ran 4-point production test on 8-27-98  
IPF 963 mcfcpd + 48 bcps (no wtr)  
Put to production line in 12/98

Cumulative Atoka Production through October 1999:  
230086 mmcf + 14738 bbls cond.