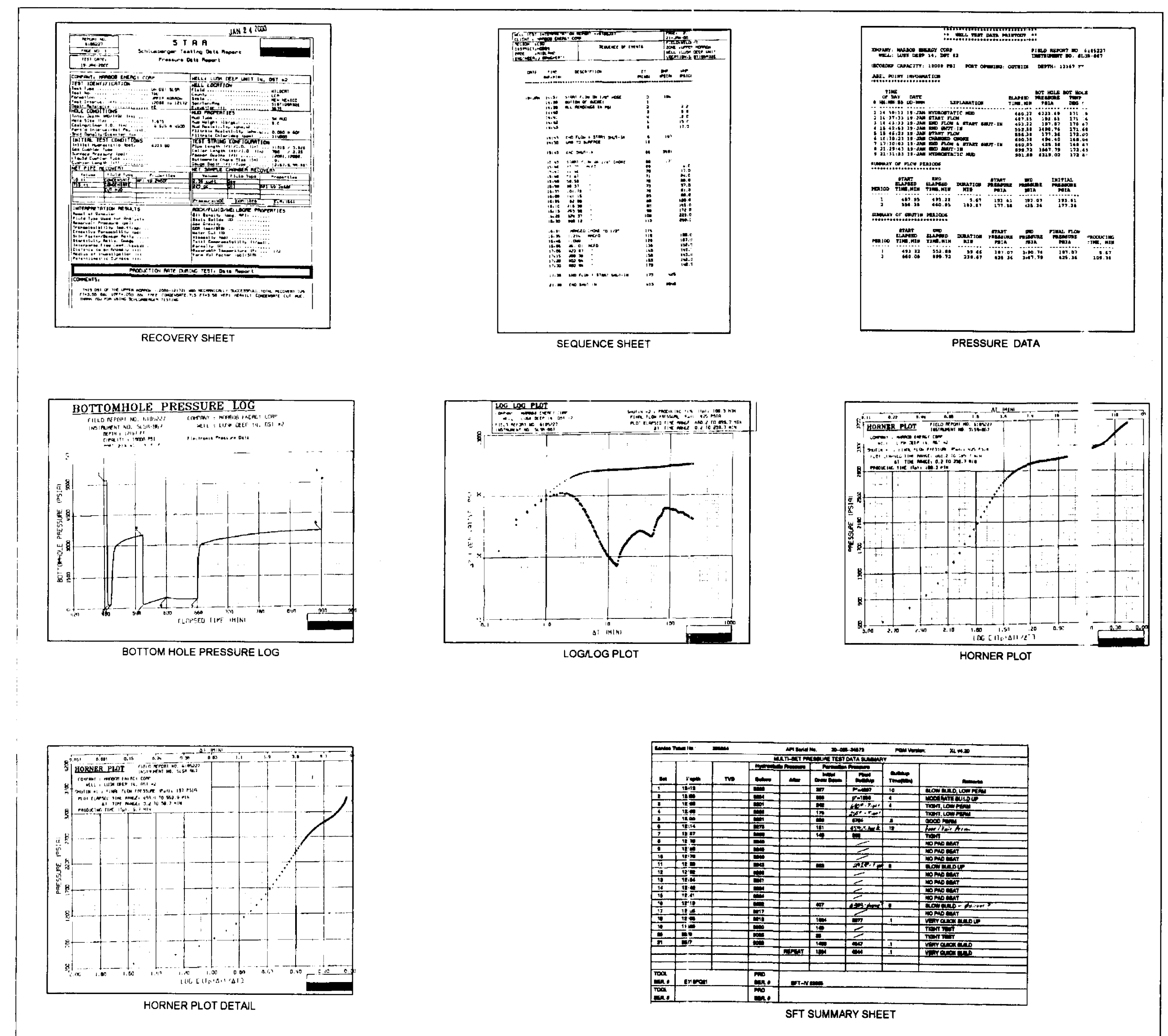
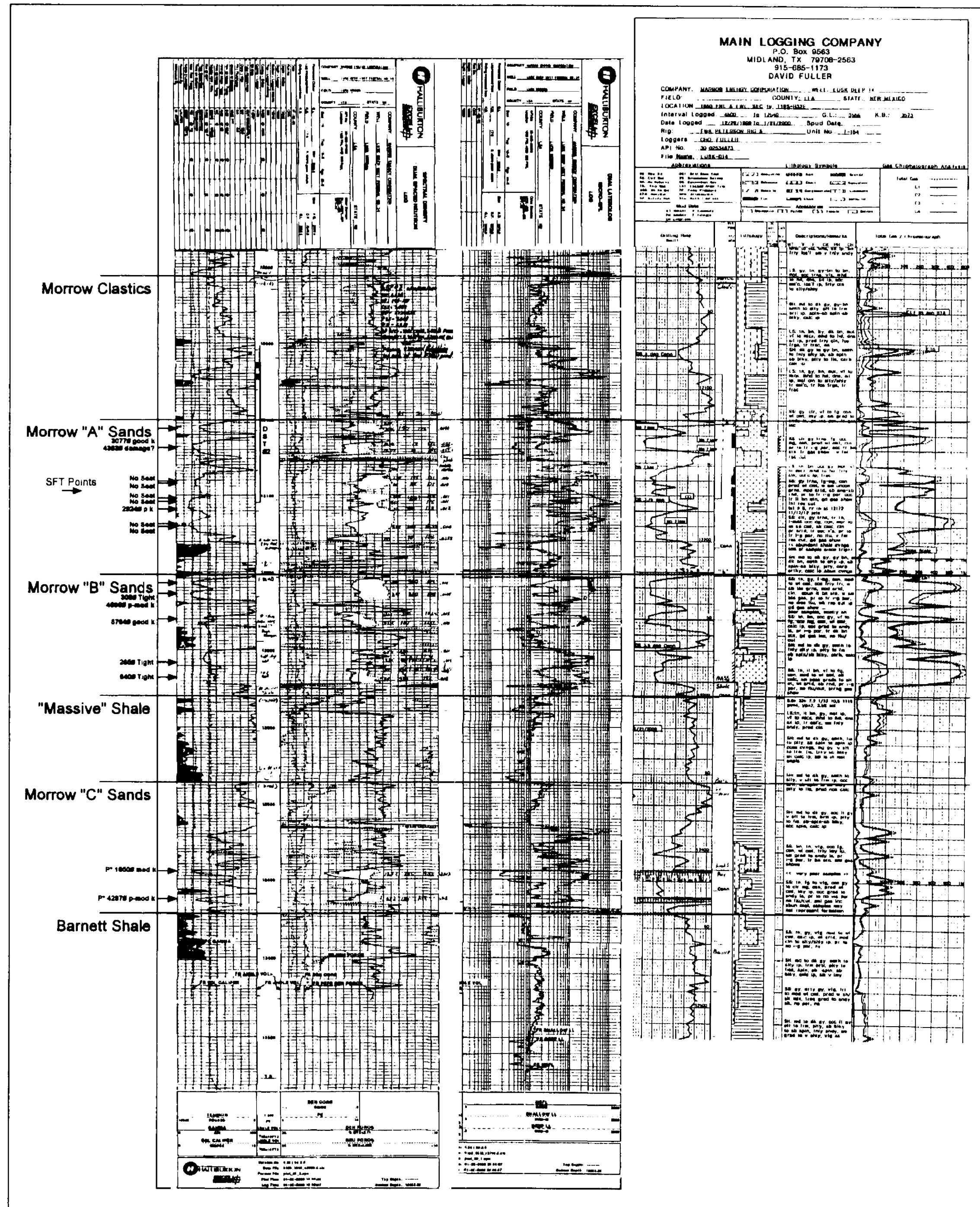


**Marbob Energy Corporation
OCD Case 12444
Lusk Deep Unit 14
Sec 19 - 19S - 32E
Eddy Co., NM**

ELECTRIC AND MUD LOGS

DST AND SELECTIVE FORMATION TESTER (SFT) INFORMATION



- What did Marbob Energy Corp. learn from the Lusk 14 well?**
1. Confirmed numerous Delaware and Bone Springs pay zones.
 2. Confirmed depletion in the Strawn area "pay" zone.
 3. Tested the Morrow "A" at 938mcpd+ with 3644#+ reservoir pressure.
 4. 5' thick sand in the "B" with virgin pressure.
 5. "C" sand 15' structurally updip to the Lusk 5. It was projected to be 15' low.
 6. "C" sand depleted to 1800# reservoir pressure but projected CUM @ 1bcdg