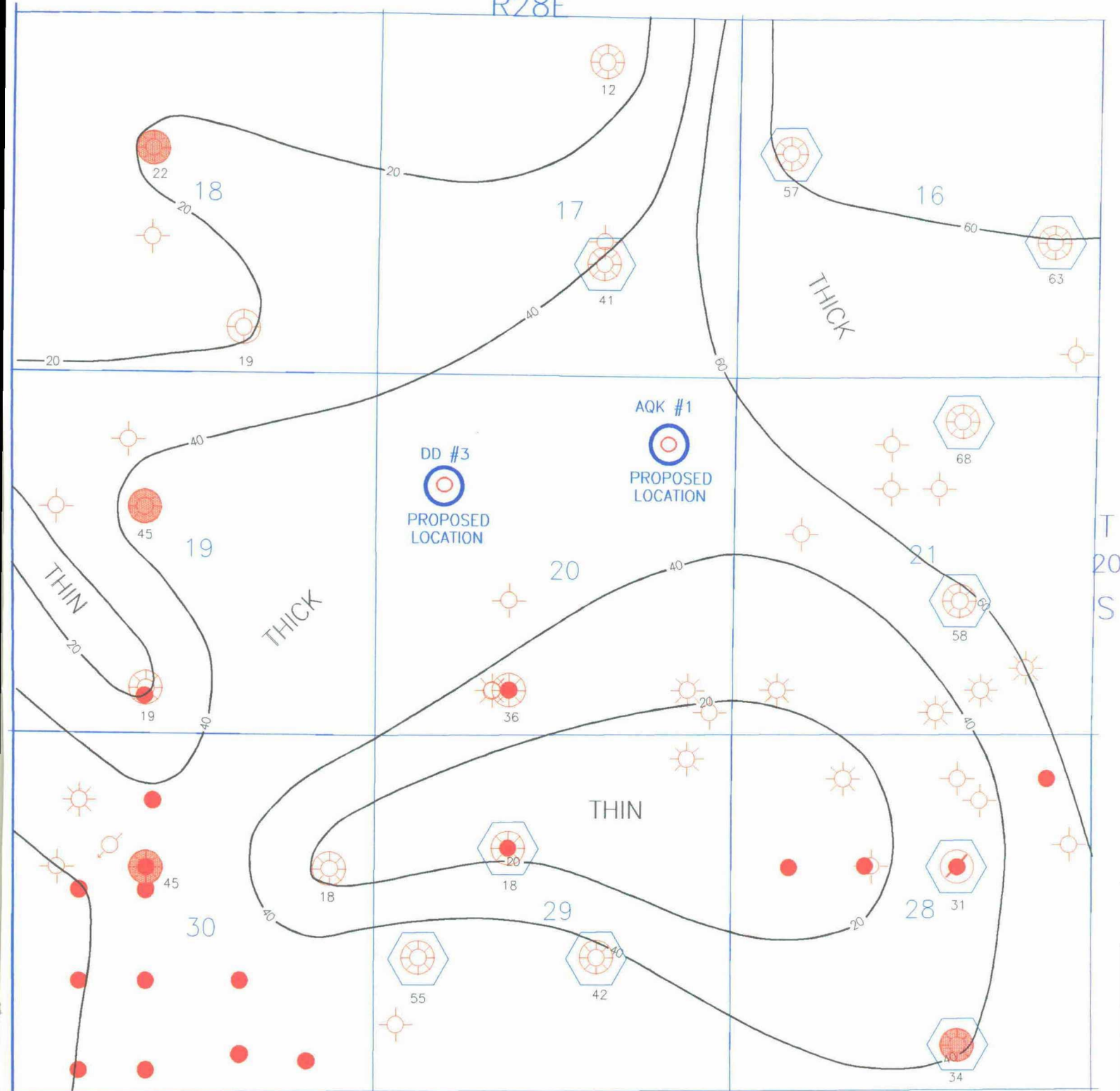

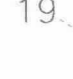





# LOWER MORROW CLASTICS ISOLITH

R28E



## LEGEND

-  Morrow Penetration
-  Thickness of Clean Sand in Lower Morrow Clastics Interval
-  Well Productive from Lower Morrow Clastics Interval
-  Well Penetrated Water Wet Lower Morrow Sand Body
-  Isolith Contours; C.I. - 20 feet

BEFORE THE

OIL CONSERVATION DIVISION

Scale 1" = 2000'

Imisolld.gpf

Case No. 11677 Exhibit No.

Submitted By:

Yates Petroleum Corporation

Hearing Date: December 19, 1996

9