

KELLAHIN AND KELLAHIN

ATTORNEYS AT LAW

EL PATIO BUILDING

117 NORTH GUADALUPE

POST OFFICE BOX 2265

SANTA FE, NEW MEXICO 87504-2265

TELEPHONE (505) 982-4285
TELEFAX (505) 982-2047

W. THOMAS KELLAHIN*

*NEW MEXICO BOARD OF LEGAL SPECIALIZATION
RECOGNIZED SPECIALIST IN THE AREA OF
NATURAL RESOURCES-OIL AND GAS LAW

JASON KELLAHIN (RETIRED 1991)

December 4, 2000

Via Facsimile

Mr. David R. Catanach
Oil Conservation Division
2040 South Pacheco
Santa Fe, New Mexico 87505

Re: NMOCD Case 12508
Application of Burlington Resources Oil & Gas Company
for a Dakota Infill Pilot Project for its San Juan 27-5 Unit
Rio Arriba County, New Mexico

Dear Mr. Catanach:

On October 19, 2000, at the hearing of the referenced case, you directed that I supplement the record with additional information concerning the justification for the unorthodox well locations. In addition, you asked that I verify the well locations of the three (3) pilot wells to be drilled at standard locations. In response, I have the following:

(1) Attached are copies of the C-102s for all eight (8) infill pilot wells;

(2) Each well is predicated on being located among existing Dakota wells in such a way as to complete an appropriate pattern to obtain additional data for reservoir simulation modeling. It is necessary to locate them at locations not currently permitted by the pool rules. The wells are to be located among existing wells at locations in the reservoir which are potentially undrained by existing wells in order (i) to properly test for interference between and among wells; and (ii) to obtain appropriate pressure data.

(3) In addition, of the five (5) wells at unorthodox well locations, the following two (2) wells had to be further adjusted because of surface limitations or topography:

Oil Conservation Division

December 4, 2000

-Page 2-

(a) San Juan 27-5 Well No. 90-F Section 16, T27N, R5W:
there is no standard location in the NE/4 for this well because
of Tucker Ridge.

(b) San Juan 27-5 Well No. 123-F Section 17, T27N, R5W:
is located near an existing road and because of steep
topography could not be located at a standard location nor at
a point equal distance from existing Dakota wells.

Please call me if you need anything further.

Very truly yours,

A handwritten signature in black ink, appearing to read 'W. Thomas Kellahin', written over a horizontal line.

W. Thomas Kellahin

cc: Burlington Resources Oil & Gas Company
Attn: Alan Alexander

District I
PO Box 1980, Hobbs, NM 88241-1980

District II
PO Drawer 00, Artesia, NM 88211-0719

District III
1000 Rio Brazos Rd., Aztec, NM 87410

District IV
PO Box 2088, Santa Fe, NM 87504-2088

State of New Mexico
Energy, Minerals & Natural Resources Department

OIL CONSERVATION DIVISION
PO Box 2088
Santa Fe, NM 87504-2088

Form C-102
Revised February 21, 1994
Instructions on back
Submit to Appropriate District Office
State Lease - 4 Copies
Fee Lease - 3 Copies

☐ AMENDED REPORT

WELL LOCATION AND ACREAGE DEDICATION PLAT

¹ API Number 30-039-	² Pool Code 71599	³ Pool Name Basin Dakota
⁴ Property Code 7454	⁵ Property Name SAN JUAN 27-5 UNIT	⁶ Well Number 40F
⁷ GRID No. 14538	⁸ Operator Name BURLINGTON RESOURCES OIL & GAS COMPANY	⁹ Elevation 6527'

¹⁰ Surface Location

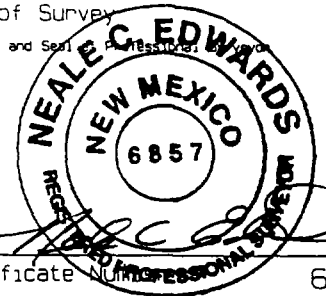
UL or lot no.	Section	Township	Range	Lot Idn	Feet from the	North/South line	Feet from the	East/West line	County
N	16	27N	5W		1175	SOUTH	1980	WEST	RIO ARriba

¹¹ Bottom Hole Location If Different From Surface

UL or lot no.	Section	Township	Range	Lot Idn	Feet from the	North/South line	Feet from the	East/West line	County

¹² Dedicated Acres DK-W/320	¹³ Joint or Infill	¹⁴ Consolidation Code	¹⁵ Order No.
---	-------------------------------	----------------------------------	-------------------------

NO ALLOWABLE WILL BE ASSIGNED TO THIS COMPLETION UNTIL ALL INTERESTS HAVE BEEN CONSOLIDATED
OR A NON-STANDARD UNIT HAS BEEN APPROVED BY THE DIVISION

¹⁶ 5308.38'	<div><p>E-290-3-M</p><p>5372.40'</p><p>16</p><p>E-290-38</p><p>LAT: 35°34.2'N LONG: 107°22.0'W</p><p>1980'</p><p>765'</p><p>1175'</p><p>2777.28'</p><p>2686.20'</p></div>	<div><p>¹⁷ OPERATOR CERTIFICATION</p><p>I hereby certify that the information contained herein is true and complete to the best of my knowledge and belief</p><p>Signature _____</p><p><u>Peggy Cole</u> Printed Name</p><p><u>Regulatory Supervisor</u> Title</p><p>Date _____</p><p>¹⁸ SURVEYOR CERTIFICATION</p><p>I hereby certify that the well location shown on this plat was plotted from field notes of actual surveys made by me or under my supervision, and that the same is true and correct to the best of my belief.</p><p>SEPTEMBER 14, 2000</p><p>Date of Survey</p><p>Signature and Seal _____</p><p></p><p>Certificate Number 6857</p></div>
---------------------------	---	--

District I
PO Box 1980, Hobbs, NM 88241-1980

District II
PO Drawer 00, Artesia, NM 88211-0719

District III
1000 Rio Brazos Rd., Aztec, NM 87410

District IV
PO Box 2088, Santa Fe, NM 87504-2088

State of New Mexico
Energy, Minerals & Natural Resources Department

OIL CONSERVATION DIVISION
PO Box 2088
Santa Fe, NM 87504-2088

Form C-102
Revised February 21, 1994
Instructions on back
Submit to Appropriate District Office
State Lease - 4 Copies
Fee Lease - 3 Copies

☐ AMENDED REPORT

WELL LOCATION AND ACREAGE DEDICATION PLAT

1 API Number 30-039-		2 Pool Code 71599		3 Pool Name Basin Dakota		
4 Property Code 7454		5 Property Name SAN JUAN 27-5 UNIT			6 Well Number 70F	
7 OGRID No. 14538		8 Operator Name BURLINGTON RESOURCES OIL & GAS COMPANY			9 Elevation 6719'	

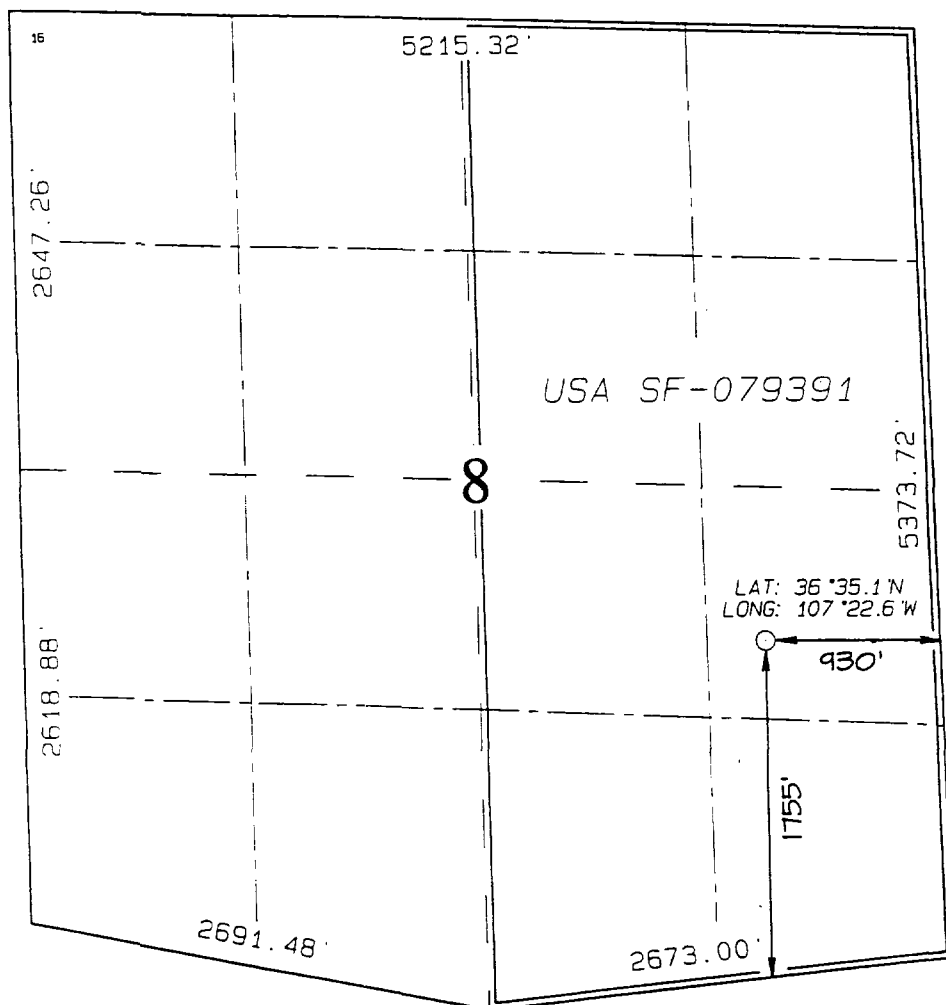
10 Surface Location

UL or lot no.	Section	Township	Range	Lot Idn	Feet from the	North/South line	Feet from the	East/West line	County
-	8	27N	5W		1755	SOUTH	930	EAST	RIO ARriba

11 Bottom Hole Location If Different From Surface

UL or lot no.	Section	Township	Range	Lot Idn	Feet from the	North/South line	Feet from the	East/West line	County
12 Dedicated Acres DK-E/320					13 Joint or Infill		14 Consolidation Code		15 Order No.

NO ALLOWABLE WILL BE ASSIGNED TO THIS COMPLETION UNTIL ALL INTERESTS HAVE BEEN CONSOLIDATED OR A NON-STANDARD UNIT HAS BEEN APPROVED BY THE DIVISION



17 OPERATOR CERTIFICATION

I hereby certify that the information contained herein is true and complete to the best of my knowledge and belief

Signature

Peggy Cole

Printed Name

Regulatory Supervisor

Title

Date

18 SURVEYOR CERTIFICATION

I hereby certify that the well location shown on this plat was plotted from field notes of actual surveys made by me or under my supervision, and that the same is true and correct to the best of my belief.

SEPTEMBER 20, 2000

Date of Survey

Signature and Seal of Professional Surveyor

NEALE C. EDWARDS
NEW MEXICO
6857
Certificate 6857

District I
PO Box 1980, Hobbs, NM 88241-1980

District II
PO Drawer 00, Artesia, NM 88211-0719

District III
1000 Rio Brazos Rd., Aztec, NM 87410

District IV
PO Box 2086, Santa Fe, NM 87504-2086

State of New Mexico
Energy, Minerals & Natural Resources Department

OIL CONSERVATION DIVISION
PO Box 2088
Santa Fe, NM 87504-2088

Form C-102
Revised February 21, 1994
Instructions on back
Submit to Appropriate District Office
State Lease - 4 Copies
Fee Lease - 3 Copies

☐ AMENDED REPORT

WELL LOCATION AND ACREAGE DEDICATION PLAT

¹ API Number	² Pool Code	³ Pool Name
30-039-	71599	Basin Dakota
⁴ Property Code	⁵ Property Name	⁶ Well Number
7454	SAN JUAN 27-5 UNIT	.90F
⁷ OGRID No.	⁸ Operator Name	⁹ Elevation
14538	BURLINGTON RESOURCES OIL & GAS COMPANY	6598'

¹⁰Surface Location

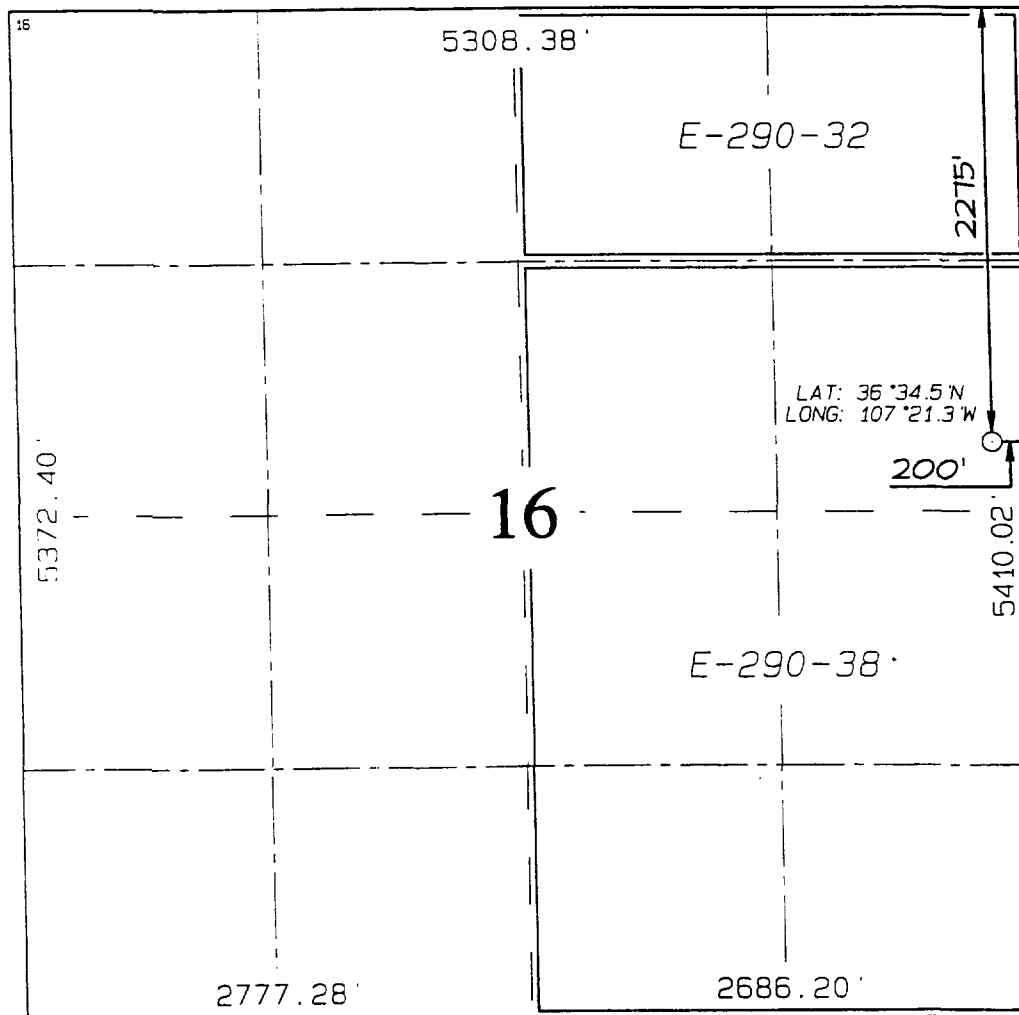
UL or lot no.	Section	Township	Range	Lot Ion	Feet from the	North/South line	Feet from the	East/West line	County
H	16	27N	5W		2275	NORTH	200	EAST	RIO ARriba

¹¹Bottom Hole Location If Different From Surface

UL or lot no.	Section	Township	Range	Lot Ion	Feet from the	North/South line	Feet from the	East/West line	County

¹² Dedicated Acres	¹³ Joint or Inf:ll	¹⁴ Consolidation Code	¹⁵ Order No.
DK-E/320			

NO ALLOWABLE WILL BE ASSIGNED TO THIS COMPLETION UNTIL ALL INTERESTS HAVE BEEN CONSOLIDATED OR A NON-STANDARD UNIT HAS BEEN APPROVED BY THE DIVISION



¹⁷ OPERATOR CERTIFICATION
I hereby certify that the information contained herein is true and complete to the best of my knowledge and belief

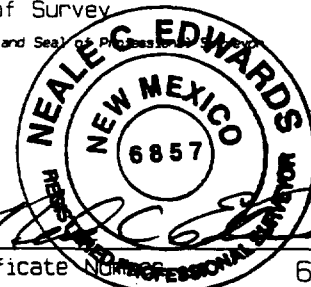
Signature
Peggy Cole
Printed Name
Regulatory Supervisor
Title
Date

¹⁸ SURVEYOR CERTIFICATION
I hereby certify that the well location shown on this plat was plotted from field notes of actual surveys made by me or under my supervision, and that the same is true and correct to the best of my belief.

SEPTEMBER 19, 2000

Date of Survey

Signature and Seal of Professional Surveyor



Certificate No. 6857

District I
PO Box 1980, Hobbs, NM 88241-1980

District II
PO Drawer 00, Artesia, NM 88211-0719

District III
1000 Rio Brazos Rd., Aztec, NM 87410

District IV
PO Box 2088, Santa Fe, NM 87504-2088

State of New Mexico
Energy, Minerals & Natural Resources Department

OIL CONSERVATION DIVISION
PO Box 2088
Santa Fe, NM 87504-2088

Form C-102
Revised February 21, 1994
Instructions on back
Submit to Appropriate District Office
State Lease - 4 Copies
Fee Lease - 3 Copies

☐ AMENDED REPORT

WELL LOCATION AND ACREAGE DEDICATION PLAT

1 API Number 30-039-		2 Pool Code 71599		3 Pool Name Basin Dakota	
4 Property Code 7454		5 Property Name SAN JUAN 27-5 UNIT			6 Well Number 112F
7 OGRID No. 14538		8 Operator Name BURLINGTON RESOURCES OIL & GAS COMPANY			9 Elevation 6599'

10 Surface Location

UL or lot no.	Section	Township	Range	Lot Idn	Feet from the	North/South line	Feet from the	East/West line	County
F	8	27N	5W		2485	NORTH	2445	WEST	RIO ARriba

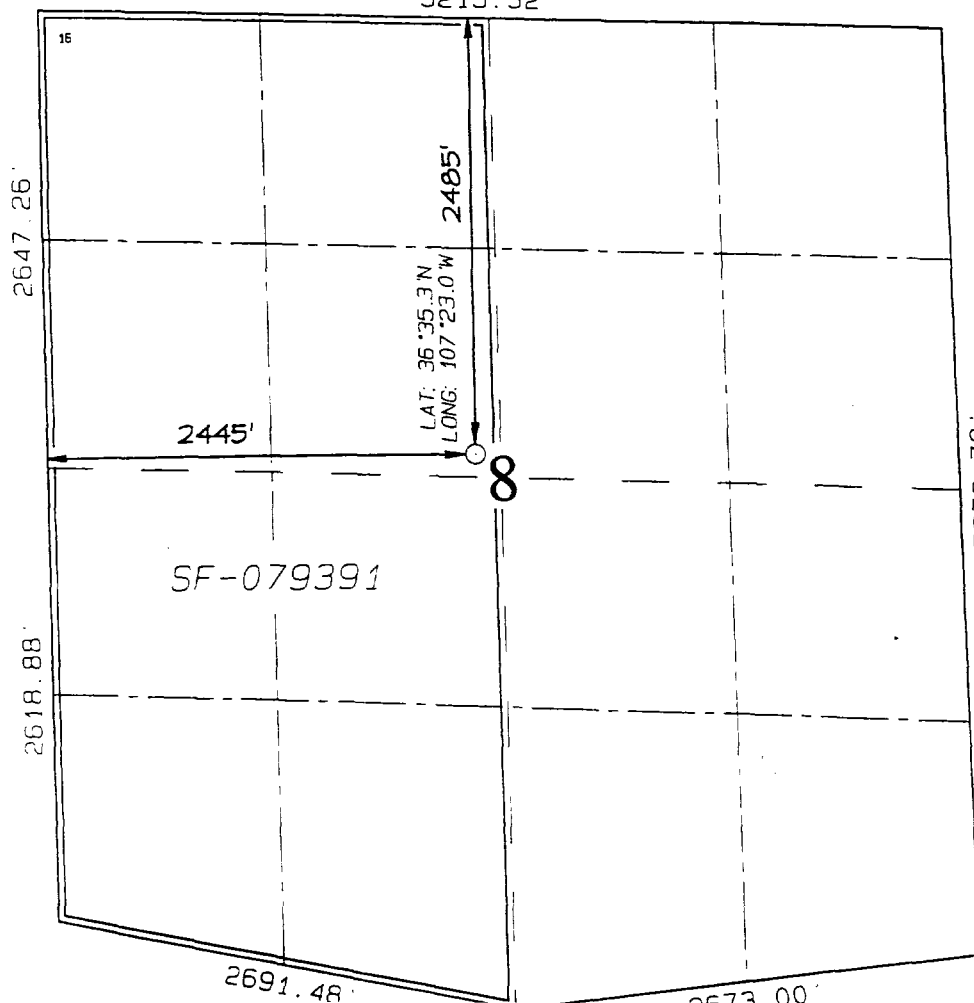
11 Bottom Hole Location If Different From Surface

UL or lot no.	Section	Township	Range	Lot Idn	Feet from the	North/South line	Feet from the	East/West line	County

12 Dedicated Acres DK-W/320	13 Joint or Infill	14 Consolidation Code	15 Order No.
--------------------------------	--------------------	-----------------------	--------------

NO ALLOWABLE WILL BE ASSIGNED TO THIS COMPLETION UNTIL ALL INTERESTS HAVE BEEN CONSOLIDATED
OR A NON-STANDARD UNIT HAS BEEN APPROVED BY THE DIVISION

5215.32'



17 OPERATOR CERTIFICATION

I hereby certify that the information contained herein is true and complete to the best of my knowledge and belief.

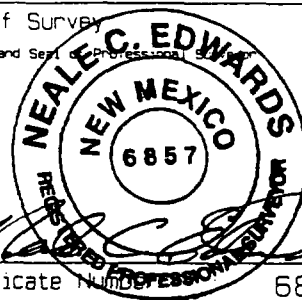
Signature
Peggy Cole
Printed Name
Regulatory Supervisor
Title
Date

18 SURVEYOR CERTIFICATION

I hereby certify that the well location shown on this plat was plotted from field notes of actual surveys made by me or under my supervision, and that the same is true and correct to the best of my belief.

SEPTEMBER 19, 2000

Date of Survey
Signature and Seal of Professional Surveyor



Certificate Number 6857

District I
PO Box 1980, Hobbs, NM 88241-1980

District II
PO Drawer DD, Artesia, NM 88211-0719

District III
1000 Rio Brazos Rd., Aztec, NM 87410

District IV
PO Box 2088, Santa Fe, NM 87504-2088

State of New Mexico
Energy, Minerals & Natural Resources Department

OIL CONSERVATION DIVISION
PO Box 2088
Santa Fe, NM 87504-2088

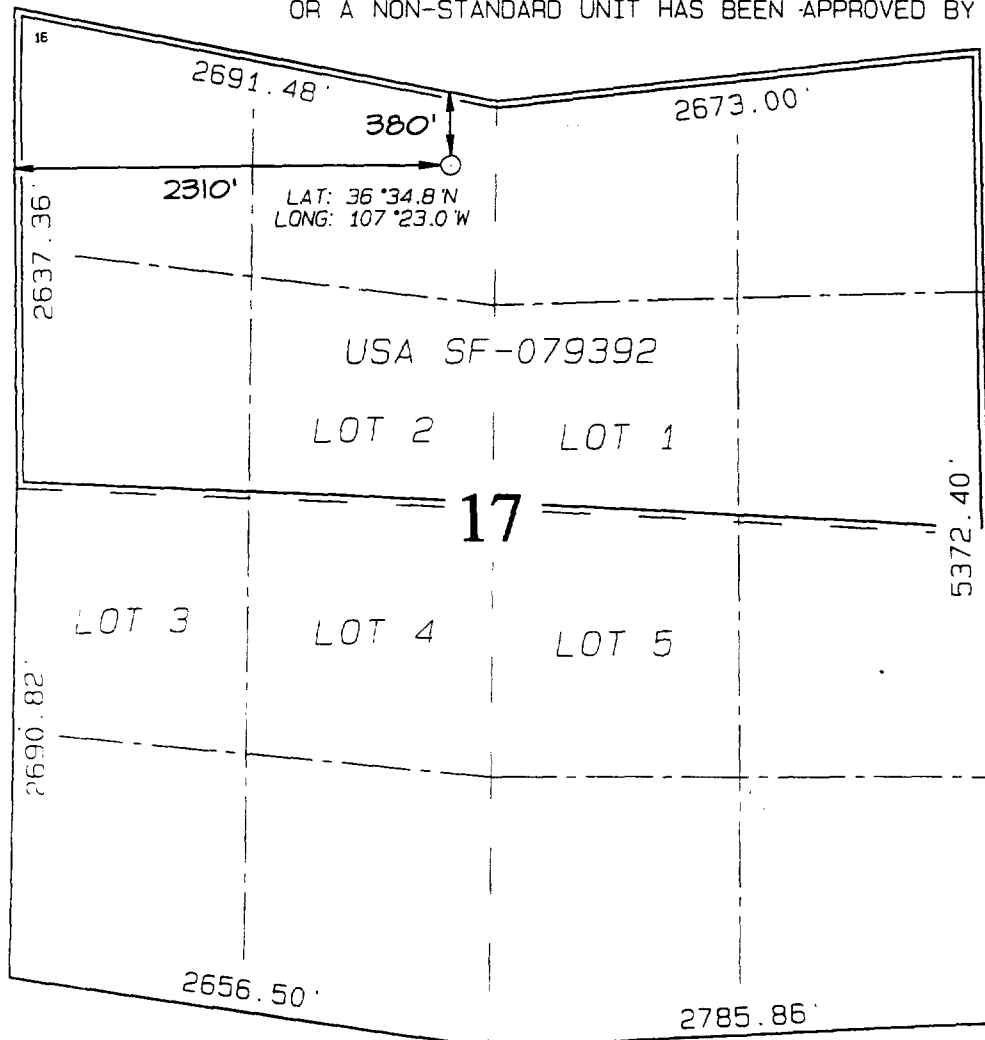
Form C-102
Revised February 21, 1994
Instructions on back
Submit to Appropriate District Office
State Lease - 4 Copies
Fee Lease - 3 Copies

☐ AMENDED REPORT

WELL LOCATION AND ACREAGE DEDICATION PLAT

*API Number 30-039-		*Pool Code 71599		*Pool Name Basin Dakota					
*Property Code 7454		*Property Name SAN JUAN 27-5 UNIT						*Well Number 114F	
*GRID No. 14538		*Operator Name BURLINGTON RESOURCES OIL & GAS COMPANY						*Elevation 6591'	
10 Surface Location									
UL or lot no. C	Section 17	Township 27N	Range 5W	Lot Idn	Feet from the 380	North/South line NORTH	Feet from the 2310	East/West line WEST	County RIO ARriba
11 Bottom Hole Location If Different From Surface									
UL or lot no.	Section	Township	Range	Lot Idn	Feet from the	North/South line	Feet from the	East/West line	County
12 Dedicated Acres DK-N/311.82		13 Joint or Infill		14 Consolidation Code		15 Order No.			

NO ALLOWABLE WILL BE ASSIGNED TO THIS COMPLETION UNTIL ALL INTERESTS HAVE BEEN CONSOLIDATED OR A NON-STANDARD UNIT HAS BEEN APPROVED BY THE DIVISION



17 OPERATOR CERTIFICATION
I hereby certify that the information contained herein is true and complete to the best of my knowledge and belief

Signature
Peggy Cole
Printed Name
Regulatory Supervisor
Title
Date

18 SURVEYOR CERTIFICATION
I hereby certify that the well location shown on this plat was plotted from field notes of actual surveys made by me or under my supervision, and that the same is true and correct to the best of my belief.

SEPTEMBER 19, 2000

Date of Survey
Signature and Seal
NEALE C. EDWARDS
NEW MEXICO
6857
Professional Surveyor

District I
PO Box 1980, Hobbs, NM 88241-1980

District II
PO Drawer DD, Artesia, NM 88211-0719

District III
1000 Rio Brazos Rd., Aztec, NM 87410

District IV
PO Box 2088, Santa Fe, NM 87504-2088

State of New Mexico
Energy, Minerals & Natural Resources Department

OIL CONSERVATION DIVISION
PO Box 2088
Santa Fe, NM 87504-2088

Form C-102
Revised February 21, 1994
Instructions on back
Submit to Appropriate District Office
State Lease - 4 Copies
Fee Lease - 3 Copies

☐ AMENDED REPORT

WELL LOCATION AND ACREAGE DEDICATION PLAT

*API Number 30-039-		*Pool Code 71599	*Pool Name Basin Dakota
*Property Code 7454	*Property Name SAN JUAN 27-5 UNIT		*Well Number 123F
*OGRID No. 14538	*Operator Name BURLINGTON RESOURCES OIL & GAS COMPANY		*Elevation 6441'

¹⁰ Surface Location

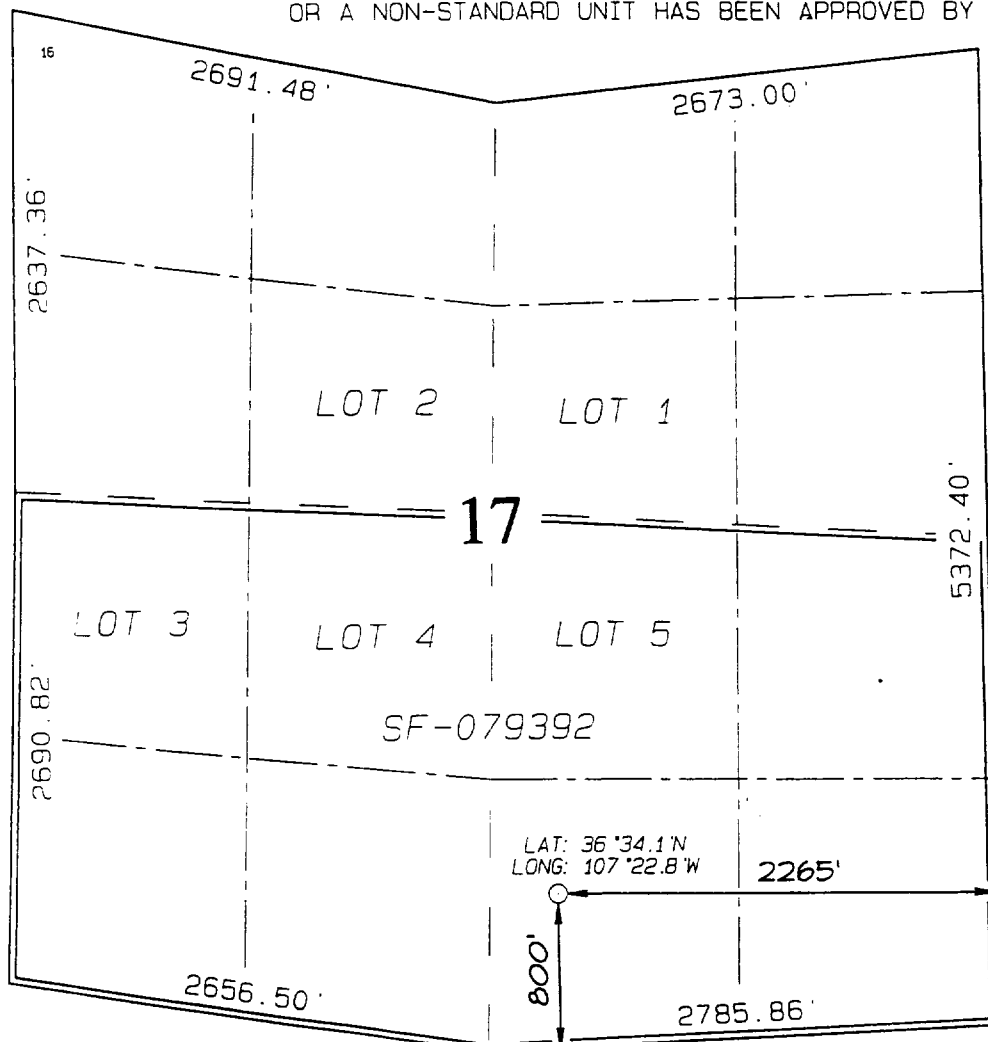
UL or lot no.	Section	Township	Range	Lot Idn	Feet from the	North/South line	Feet from the	East/West line	County
0	17	27N	5W		800	SOUTH	2265	EAST	RIO ARriba

¹¹ Bottom Hole Location If Different From Surface

UL or lot no.	Section	Township	Range	Lot Idn	Feet from the	North/South line	Feet from the	East/West line	County

¹² Dedicated Acres DK-S/330.33	¹³ Joint or Infill	¹⁴ Consolidation Code	¹⁵ Order No.
--	-------------------------------	----------------------------------	-------------------------

NO ALLOWABLE WILL BE ASSIGNED TO THIS COMPLETION UNTIL ALL INTERESTS HAVE BEEN CONSOLIDATED OR A NON-STANDARD UNIT HAS BEEN APPROVED BY THE DIVISION



OPERATOR CERTIFICATION

I hereby certify that the information contained herein is true and complete to the best of my knowledge and belief

Signature
Peggy Cole
Printed Name
Regulatory Supervisor
Title

¹⁸ Date

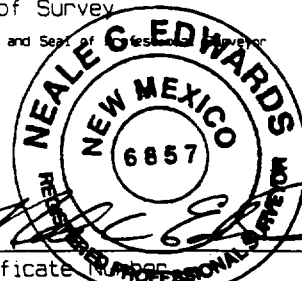
SURVEYOR CERTIFICATION

I hereby certify that the well location shown on this plat was plotted from field notes of actual surveys made by me or under my supervision, and that the same is true and correct to the best of my belief.

SEPTEMBER 20, 2000

Date of Survey

Signature and Seal of Surveyor



Certificate Number 6857

District I
PO Box 1980, Hobbs, NM 88241-1980

District II
PO Drawer DD, Artesia, NM 88211-0719

District III
3000 Rio Brazos Rd., Aztec, NM 87410

District IV
PO Box 2088, Santa Fe, NM 87504-2088

State of New Mexico
Energy, Minerals & Natural Resources Department

OIL CONSERVATION DIVISION
PO Box 2088
Santa Fe, NM 87504-2088

Form C-102
Revised February 21, 1994
Instructions on back
Submit to Appropriate District Office
State Lease - 4 Copies
Fee Lease - 3 Copies

☐ AMENDED REPORT

WELL LOCATION AND ACREAGE DEDICATION PLAT

1 API Number 30-039-		2 Pool Code 71599		3 Pool Name Basin Dakota		
4 Property Code 7454		5 Property Name SAN JUAN 27-5 UNIT			6 Well Number 137F	
7 OGRID No. 14538		8 Operator Name BURLINGTON RESOURCES OIL & GAS COMPANY			9 Elevation 6535'	

10 Surface Location

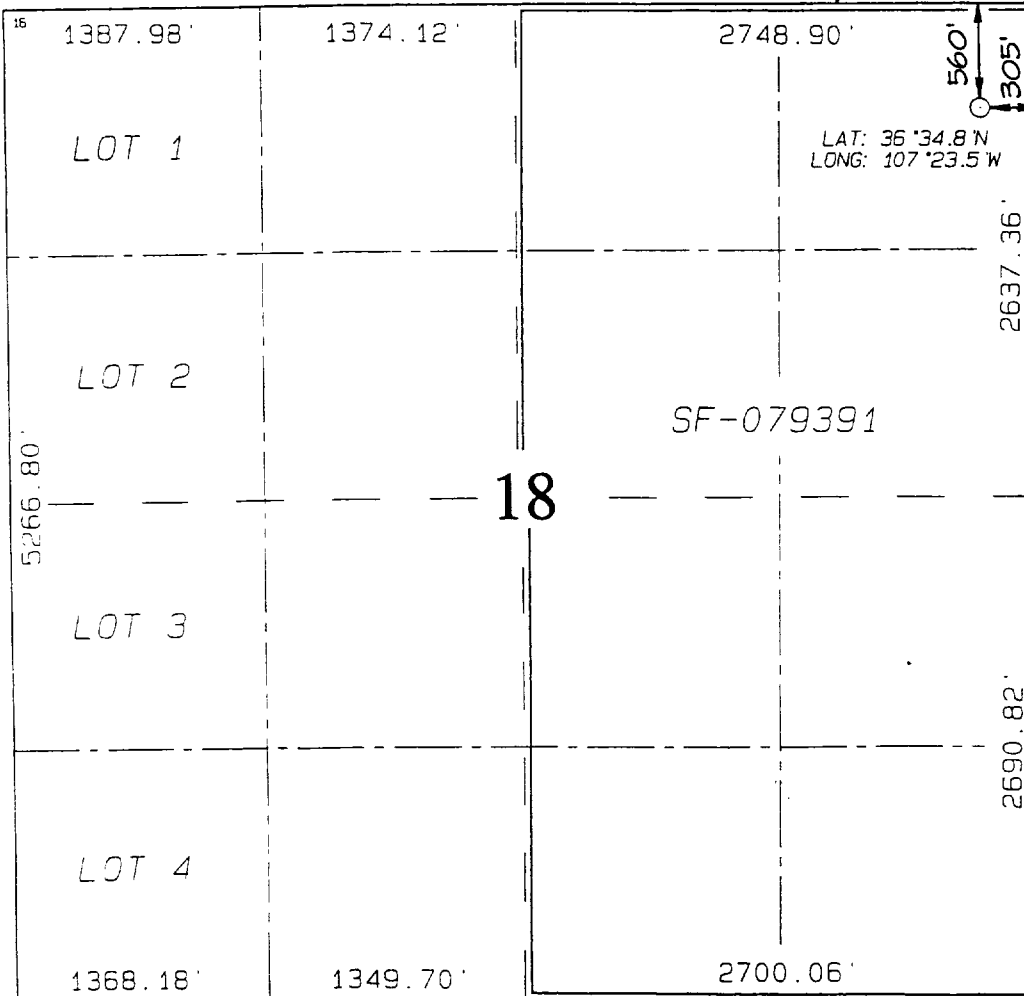
UL or lot no. A	Section 18	Township 27N	Range 5W	Lot Idn	Feet from the 560	North/South line NORTH	Feet from the 305	East/West line EAST	County RIO ARriba
--------------------	---------------	-----------------	-------------	---------	----------------------	---------------------------	----------------------	------------------------	----------------------

11 Bottom Hole Location If Different From Surface

UL or lot no.	Section	Township	Range	Lot Idn	Feet from the	North/South line	Feet from the	East/West line	County
---------------	---------	----------	-------	---------	---------------	------------------	---------------	----------------	--------

12 Dedicated Acres DK-E/320	13 Joint or Infill	14 Consolidation Code	15 Order No.
--------------------------------	--------------------	-----------------------	--------------

NO ALLOWABLE WILL BE ASSIGNED TO THIS COMPLETION UNTIL ALL INTERESTS HAVE BEEN CONSOLIDATED
OR A NON-STANDARD UNIT HAS BEEN APPROVED BY THE DIVISION



17 OPERATOR CERTIFICATION
I hereby certify that the information contained herein is true and complete to the best of my knowledge and belief.

Signature
Peggy Cole
Printed Name
Regulatory Supervisor
Title

18 Date

SURVEYOR CERTIFICATION

I hereby certify that the well location shown on this plat was plotted from field notes of actual surveys made by or under my supervision, and that the same is true and correct to the best of my belief.

SEPTEMBER 20, 2000

Date of Survey

Signature and Seal of Professional Surveyor



Certificate Number 6857

District I
PO Box 1980, Hobbs, NM 88241-1980

District II
PO Drawer CD, Artesia, NM 88211-0719

District III
1000 Rio Brazos Rd., Aztec, NM 87410

District IV
PO Box 2088, Santa Fe, NM 87504-2088

State of New Mexico
Energy, Minerals & Natural Resources Department

OIL CONSERVATION DIVISION
PO Box 2088
Santa Fe, NM 87504-2088

Form C-102
Revised February 21, 1994
Instructions on back
Submit to Appropriate District Office
State Lease - 4 Copies
Fee Lease - 3 Copies

☐ AMENDED REPORT

WELL LOCATION AND ACREAGE DEDICATION PLAT

1 API Number 30-039-		2 Pool Code 71599		3 Pool Name Basin Dakota					
4 Property Code 7454		5 Property Name SAN JUAN 27-5 UNIT						6 Well Number 138F	
7 GRID No. 14538		8 Operator Name BURLINGTON RESOURCES OIL & GAS COMPANY						9 Elevation 6391'	
10 Surface Location									
11 Lot or lot no. 4	12 Section 19	13 Township 27N	14 Range 5W	15 Lot 10n	16 Feet from the 835	17 North/South line NORTH	18 Feet from the 660	19 East/West line EAST	20 County RIO ARriba
21 Bottom Hole Location If Different From Surface									
22 Lot or lot no.	23 Section	24 Township	25 Range	26 Lot 10n	27 Feet from the	28 North/South line	29 Feet from the	30 East/West line	31 County
32 Dedicated Acres DK-E/320		33 Joint or Infill		34 Consolidation Code		35 Order No.			

NO ALLOWABLE WILL BE ASSIGNED TO THIS COMPLETION UNTIL ALL INTERESTS HAVE BEEN CONSOLIDATED OR A NON-STANDARD UNIT HAS BEEN APPROVED BY THE DIVISION

16 1368.18'		1349.70'		2700.06'		17 OPERATOR CERTIFICATION	
LOT 1				835'		I hereby certify that the information contained herein is true and complete to the best of my knowledge and belief	
				660'		Signature	
				LAT: 36°33.9'N LONG: 107°23.6'W		Peggy Cole	
				2577.96'		Printed Name	
LOT 2				SF-079392		Regulatory Supervisor	
						Title	
						Date	
5266.80'		19				18 SURVEYOR CERTIFICATION	
LOT 3						I hereby certify that the well location shown on this plat was plotted from field notes of actual surveys made by me or under my supervision, and that the same is true and correct to the best of my belief	
						SEPTEMBER 14, 2000	
						Date of Survey	
						Signature and Seal of Professional Surveyor	
LOT 4						NEALE C. EDWARDS	
1393.26'		1382.04'		2763.42'		NEW MEXICO	
						6857	
						Certificate Number 6857	