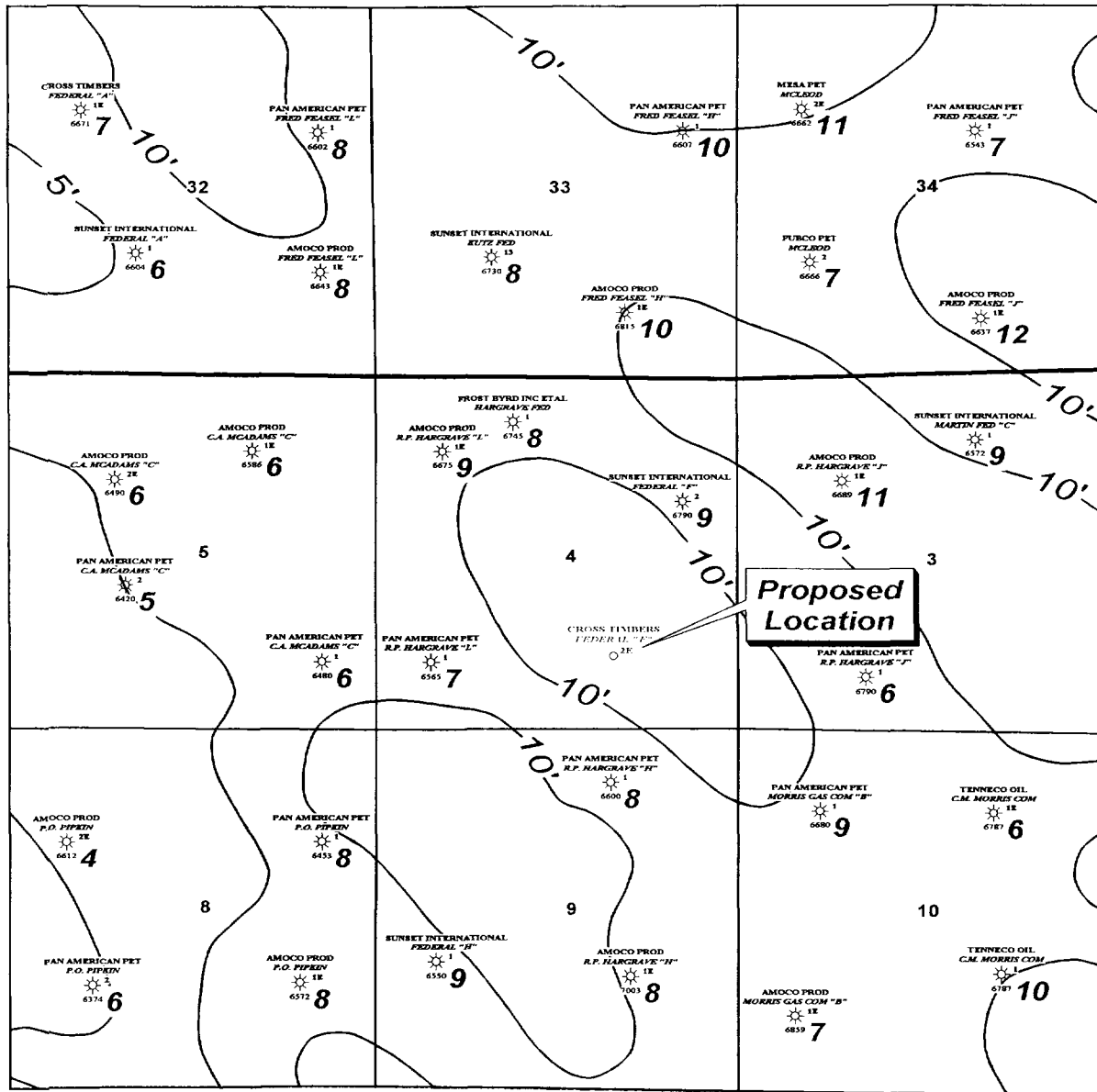


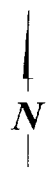
R 10 W

T
28
N

T
27
N



BEFORE SARA-LISA FROGNER
OIL COOPERATION DIVISION
ENCL. NO. 6
C.D. NO.



Federal "F" #2E
SAN JUAN COUNTY, NEW MEXICO
2nd. DAKOTA SANDSTONE
NET SANDSTONE ISOPACH

CONTOUR INTERVAL: 5' DATE: NOVEMBER, 2000

