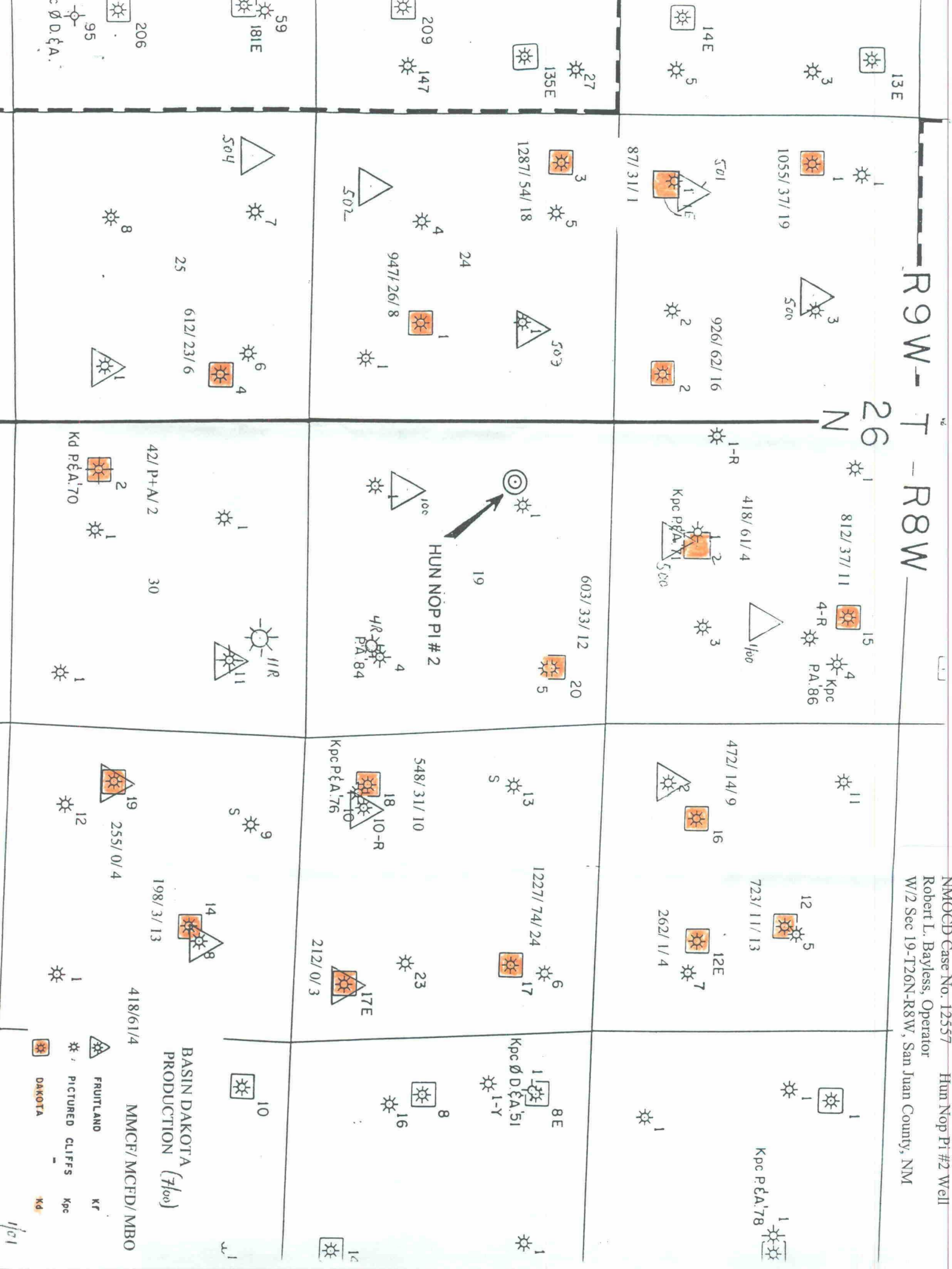


NMOCD Case No. 12557 Hun Nop Pi #2 Well
Robert L. Bayless, Operator
W/2 Sec 19-T26N-R8W, San Juan County, NM



District I
PO Box 1980, Hobbs, NM 88241-1980
District II
PO Drawer DD, Artesia, NM 88211-0719
District III
1000 Rio Brazos Rd., Aztec, NM 87410
District IV
PO Box 2088, Santa Fe, NM 87504-2088

State of New Mexico
Energy, Minerals & Natural Resources Department

OIL CONSERVATION DIVISION
PO Box 2088
Santa Fe, NM 87504-2088

Form C-102
Revised February 21, 1994
Instructions on back
Submit to Appropriate District Office
State Lease - 4 Copies
Fee Lease - 3 Copies

☐ AMENDED REPORT

WELL LOCATION AND ACREAGE DEDICATION PLAT

1 API Number		2 Pool Code		3 Pool Name	
4 Property Code		5 Property Name HUN-NOP-PI			6 Well Number 2
7 OGRID No.		8 Operator Name ROBERT L. RAYLESS			9 Elevation 6195

10 Surface Location

UL or lot no.	Section	Township	Range	Lot Idn	Feet from the	North/South line	Feet from the	East/West line	County
2	19	26 N	8 W		1650	North	1050	West	San Juan

11 Bottom Hole Location If Different From Surface

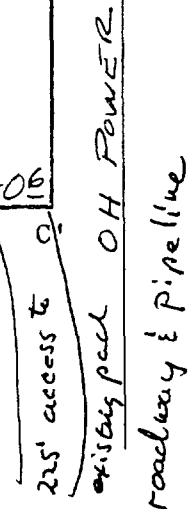
UL or lot no.	Section	Township	Range	Lot Idn	Feet from the	North/South line	Feet from the	East/West line	County

12 Dedicated Acres	13 Joint or Infill	14 Consolidation Code	15 Order No.

NO ALLOWABLE WILL BE ASSIGNED TO THIS COMPLETION UNTIL ALL INTERESTS HAVE BEEN CONSOLIDATED
OR A NON-STANDARD UNIT HAS BEEN APPROVED BY THE DIVISION

<p>16</p> <p>N 89° 23' W 19.61 ch. 19.71 ch.</p> <p>LOT No. (TYP) 1</p> <p>79.65 ch.</p> <p>1050' 2</p> <p>1650'</p> <p>SEC.</p> <p>3</p> <p>4</p> <p>21.43 ch. S 89° 23' W 21.31 ch.</p> <p>39.41 ch.</p> <p>78.77 ch.</p> <p>19</p> <p>N 2° 54' W</p> <p>39.82 ch.</p>		<p>17 OPERATOR CERTIFICATION</p> <p>I hereby certify that the information contained herein is true and complete to the best of my knowledge and belief</p> <p>Signature _____</p> <p>Printed Name _____</p> <p>Title _____</p> <p>Date _____</p> <p>18 SURVEYOR CERTIFICATION</p> <p>I hereby certify that the well location shown on this plat was plotted from field notes of actual surveys made by me or under my supervision, and that the same is true and correct to the best of my belief.</p> <p>28 AUG 1994</p> <p>Date of Survey</p> <p>Signature and Seal of Professional Surveyor</p> <p>WILLIAM T. HENRIKSEN II</p> <p>Certificate Number 8466</p>
--	--	--

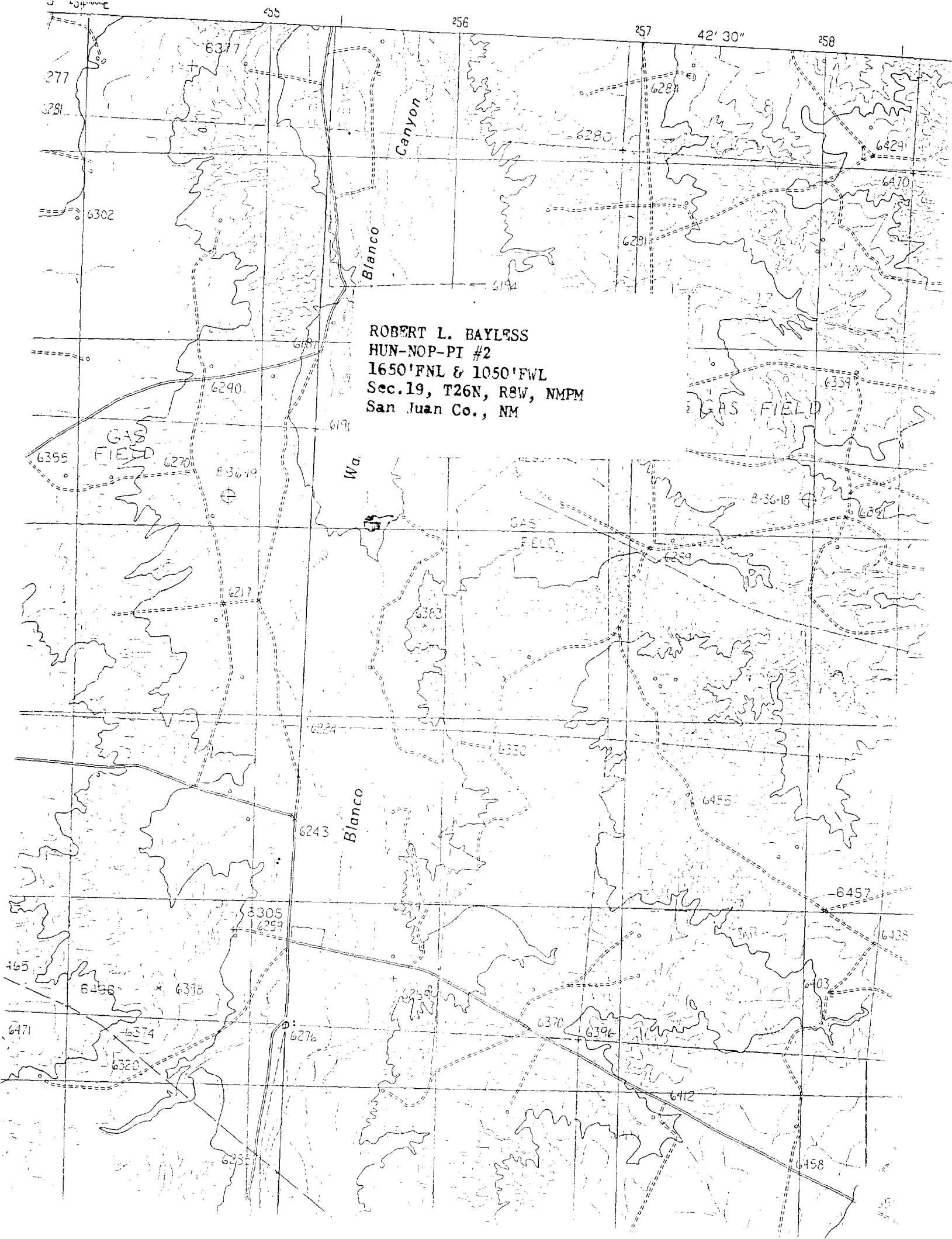
Round corner
to maintain form



A-A'	Vert.: 1" = 30'	Horiz.: 1" = 100'	C/L				
6200							
6190							

B-B'							
6200							
6190							

C-C'							
6200							
6190							



ROBERT L. BAYLESS
HUN-NOP-PI #2
1650'FNL & 1050'FWL
Sec.19, T26N, R8W, NMPM
San Juan Co., NM