

COMPANY: Manzano Oil Corporation
WELL: Neuhaus Federal 14 #3
FIELD: Wildcat
COUNTY: Lea STATE: New Mexico

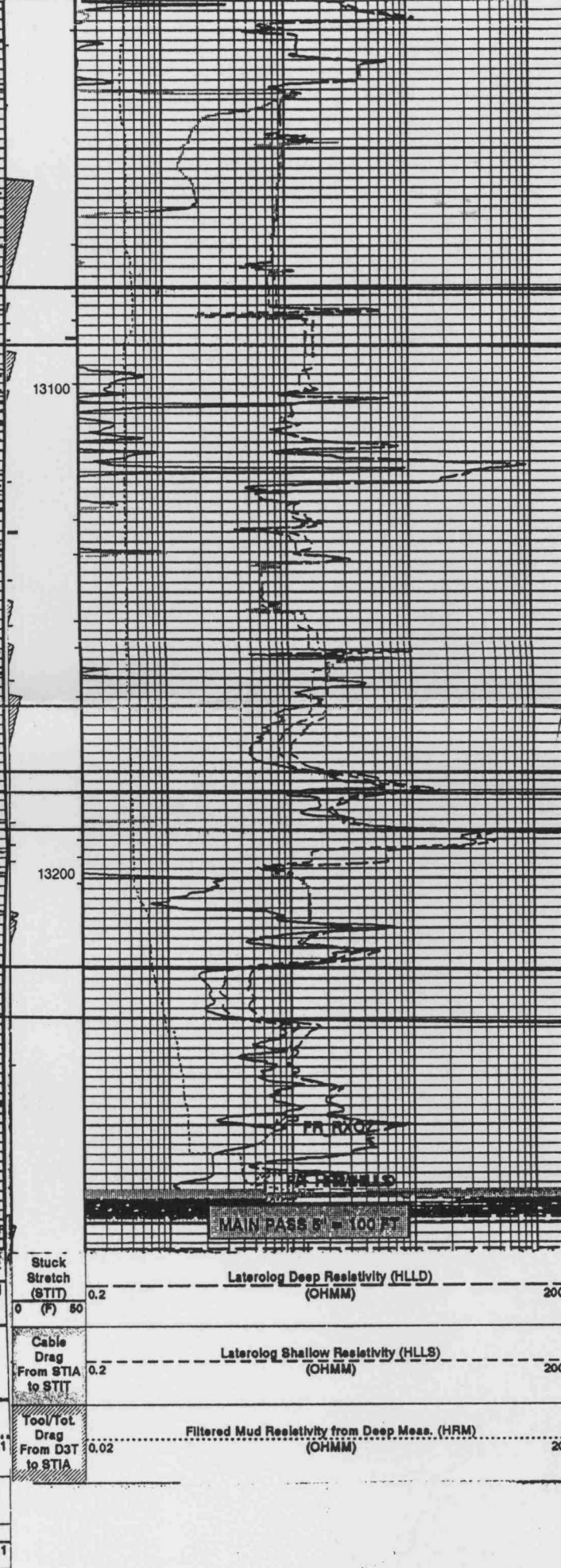
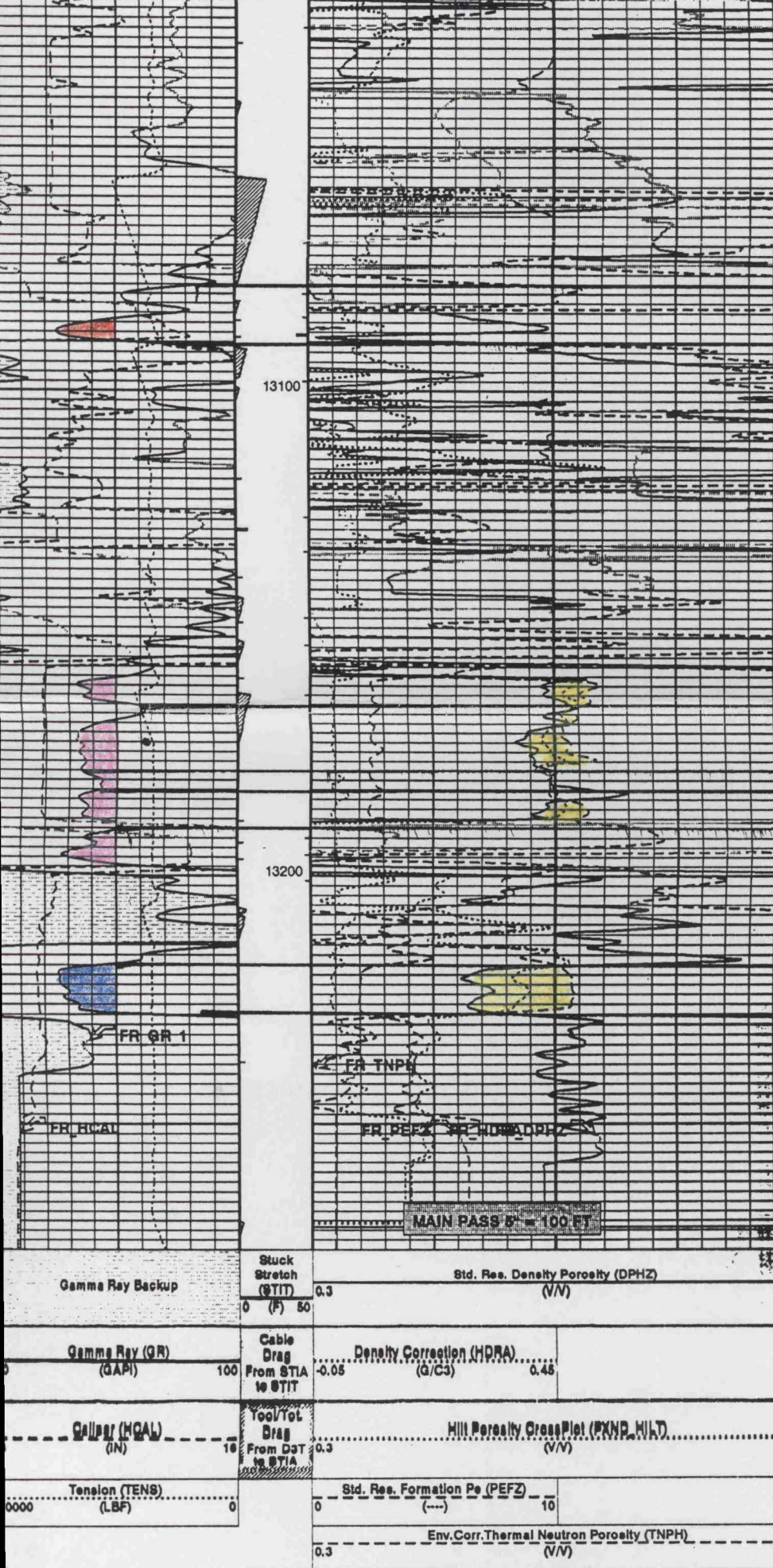
COMPANY: Manzano Oil Corporation
WELL: Neuhaus Federal 14 #3
FIELD: Wildcat
COUNTY: Lea STATE: New Mexico

Schlumberger
PLATFORM EXPRESS
Three Detector Litho-Density
Compensated Neutron - GR
660' FSL & 1980' FEL
Section 14, Twp. 20-S, Range 35-E
Elev.: K.B. 3691 ft
G.L. 3676 ft
D.F. 3690 ft
Permanent Datum: GROUND LEVEL
Log Measured From: KELLY BUSHING 15.0 ft above Perm. Datum
Drilling Measured From: KELLY BUSHING
API Serial No. 30-025-35153
SECTION 14
TOWNSHIP 20-S
RANGE 35-E

Schlumberger
PLATFORM EXPRESS
Azimuthal Laterolog
MicroCFL - GR
660' FSL & 1980' FEL
Section 14, Twp. 20-S, Range 35-E
Elev.: K.B. 3691 ft
G.L. 3676 ft
D.F. 3690 ft
Permanent Datum: GROUND LEVEL
Log Measured From: KELLY BUSHING 15.0 ft above Perm. Datum
Drilling Measured From: KELLY BUSHING
API Serial No. 30-025-35153
SECTION 14
TOWNSHIP 20-S
RANGE 35-E

Logging Date 20-NOV-2000
Run Number 1
Depth Driller 13430 ft
Schlumberger Depth 13430 ft
Bottom Log Interval 13270 ft
Top Log Interval 4037 ft

Logging Date 20-NOV-2000
Run Number 1
Depth Driller 13430 ft
Schlumberger Depth 13430 ft
Bottom Log Interval 13270 ft
Top Log Interval 4037 ft



Sw = ?

$$Sw = \frac{\sqrt{0.045/10}}{0.11} = 61\%$$

$$Sw = \frac{\sqrt{0.045/25}}{0.09} = 47\%$$

$$Sw = \frac{\sqrt{0.045/4.5}}{0.13} = 80\%$$

BEFORE THE
OIL CONSERVATION DIVISION
Case No. 12571 Exhibit No. 15
Submitted By:
BWB Partners
Hearing Date: January 11, 2001