

29347457 NSL 11/6/00



October 11, 2000

Chevron U.S.A. Production Company
P.O. Box 1150
Midland, TX 79702

Administrative Application For
Non-Standard Gas Well Location
Chevron USA Production Co.
G. C. Matthews #12
Surface Loc. 330' FSL & 990' FEL
Section 6, T20S, R37E
Monument Tubb West Pool
Lea County, New Mexico

037 - 3000

State of New Mexico
Energy, Minerals & Natural Resources Dept.
Oil Conservation Division
Attn.: Ms. Lori Wrotenbery
2040 South Pacheco
Santa Fe, New Mexico 87505

Dear Ms. Wrotenbery:

Chevron USA respectfully requests your approval of this administrative application for the subject non-standard gas well location in the Monument Tubb West Pool.

The G. C. Matthews #12 (30-025-05953) was drilled and completed in October, 1954, as a Paddock well in the Monument Paddock Field. The well has been completed in the Grayburg and the Eumont. The most recent work was in 1997 when the Yates was completed. See the attached wellbore schematic for the history of the well. The #12 well currently is shut-in. This well was drilled as a standard location for the Paddock at 330' from the lease line, but is a non-standard location for the Tubb gas.

The Cross Timbers Barber Bertha #12 (30-025-05978) well is located at 330' FNL and 660' FEL of Section 7, T20S, R37E and is the south offset to Chevron's #12 well. The G. C. Matthews #12 well will be deepened from 5700' to 6500' and then completed in the Tubb. The cost to do this is significantly less than to drill a new well.

A copy of this Application was sent to each of the offset operators. All notices were sent by certified mail.

Attachments include: map, wellbore schematic, C-102 plat, list of offset operators, and a copy of the notification letter sent. If you have any questions or require any further information concerning this application, please contact me at (915) 687-7152.

Sincerely,

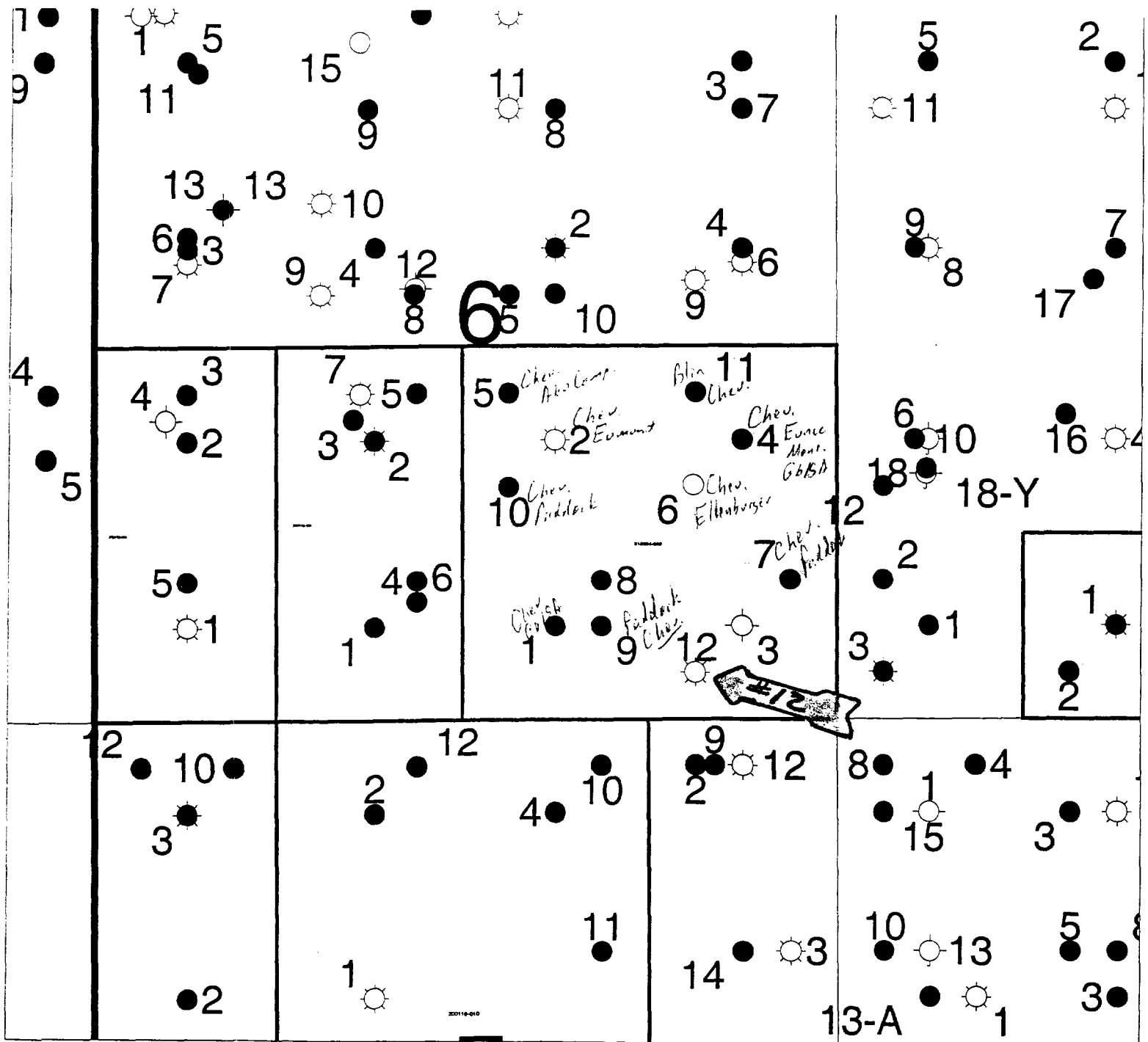
A handwritten signature in black ink, reading "Lloyd V. Trautman". The signature is fluid and cursive, with the first name "Lloyd" and last name "Trautman" clearly legible, and a middle initial "V." in the center.

Lloyd V. Trautman
Sr. Petroleum Engineer
New Mexico Area

lvt
Attachments

cc: NMOCD -- Hobbs, NM
J. K. Ripley
T. R. Denny
L. V. Trautman
R. M. Vaden
Central Files

**Administrative Application For
Non-Standard Gas Well Location
Chevron USA Production Co.
G. C. Matthews #12
Surface Loc. 330' FSL & 990' FEL
Section 6, T20S, R37E
Monument Tubb West Pool
Lea County, New Mexico**



WELL DATA SHEET

FIELD: Eumont

WELL NAME: G. C. Matthews #12

FORMATION: Yates

LOC: 330' FSL & 990' FEL
TOWNSHIP: 20S
RANGE: 37E

SEC: 6
COUNTY: Lea
STATE: NM

GL: 3556'
KB to GL: 11'
DF to GL:

CURRENT STATUS: SI
API NO: 30-025-05953
REFNO:

Date Completed: 10/26/54

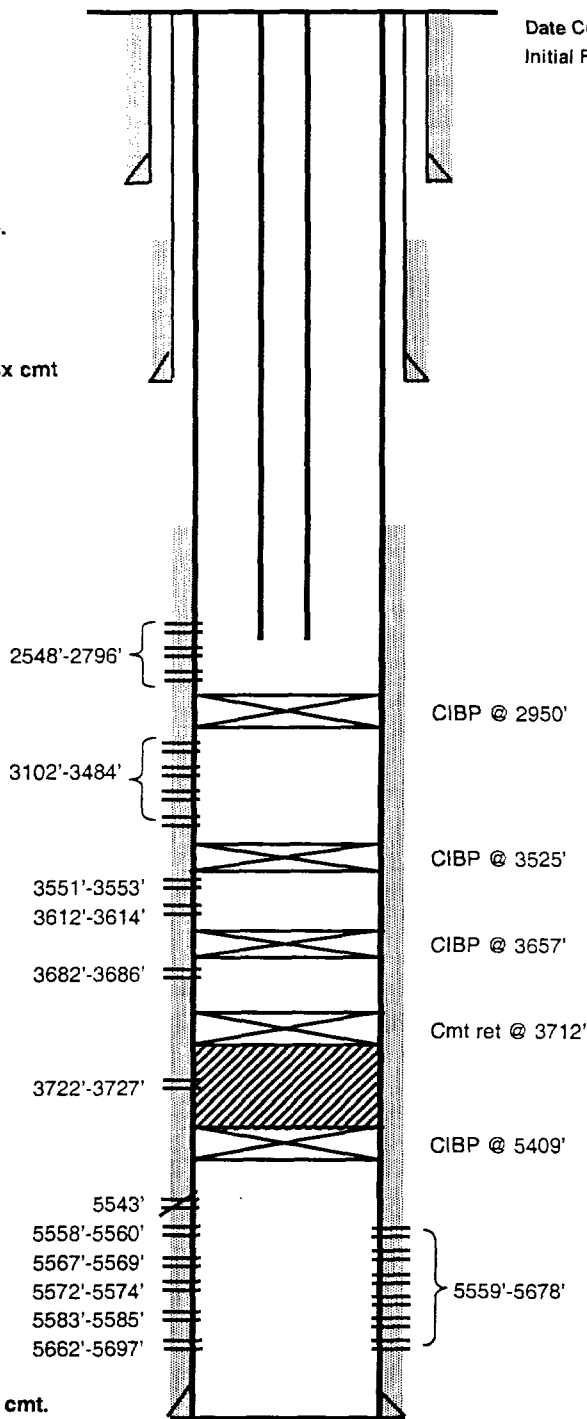
Initial Formation:

Completion Data:

Perf 7" csg @ 5662'-5697' w/4 1/2" JHPF. Acdz
w/1000 gals 15% NE acid. Swb & well kicked off
flowing.

13-3/8" OD, 48#
Surf Pipe set @ 408'
W/400 sx cmt
Circulated to surface.

9 5/8" OD, 36# Csg
Set @ 2899' w/1575 sx cmt
TOC @ 420' by TS.



Formation Tops	
Rustler	1025
T/Salt	1080
B/Salt	2040
Yates	2423
7-Rivers	2723
Queen	3093
Grayburg	3392
San Andres	3760
Glorieta	5070
Blaine	5658

7" OD, 20 & 23# Csg
Set @ 5699' w/400 sx cmt.
TOC @ 2100' by TS.

TD 5700'

District I
1625 N. French Dr., Hobbs, NM 88240

District II
811 South First, Artesia, NM 88210

District III
1000 Rio Brazos Rd., Aztec, NM 87410

District IV
2040 South Pacheco, Santa Fe, NM 87505

State of New Mexico
Energy, Minerals & Natural Resources Department

OIL CONSERVATION DIVISION
2040 South Pacheco
Santa Fe, NM 87505

Form C-102
Revised March 17, 1999

Submit to Appropriate District Office
State Lease - 4 Copies
Fee Lease - 3 Copies

☐ AMENDED REPORT

WELL LOCATION AND ACREAGE DEDICATION PLAT

¹ API Number 30-025-05753	² Pool Code	³ Pool Name Monument; Tubb West
⁴ Property Code 2688	⁵ Property Name G. C. Mathews	⁶ Well Number 12
⁷ OGRID No. 4323	⁸ Operator Name Chevron	⁹ Elevation 3556

¹⁰ Surface Location

UL or lot no. P	Section 6	Township 20S	Range 37E	Lot Idn	Feet from the 330	North/South line South	Feet from the 990	East/West line East	County Lea
--------------------	--------------	-----------------	--------------	---------	----------------------	---------------------------	----------------------	------------------------	---------------

¹¹ Bottom Hole Location If Different From Surface

UL or lot no.	Section	Township	Range	Lot Idn	Feet from the	North/South line	Feet from the	East/West line	County
---------------	---------	----------	-------	---------	---------------	------------------	---------------	----------------	--------

¹² Dedicated Acres 160	¹³ Joint or Infill N	¹⁴ Consolidation Code	¹⁵ Order No.
--------------------------------------	------------------------------------	----------------------------------	-------------------------

NO ALLOWABLE WILL BE ASSIGNED TO THIS COMPLETION UNTIL ALL INTERESTS HAVE BEEN CONSOLIDATED OR A NON-STANDARD UNIT HAS BEEN APPROVED BY THE DIVISION

16					¹⁷ OPERATOR CERTIFICATION I hereby certify that the information contained herein is true and complete to the best of my knowledge and belief Lloyd V. Trautman Signature Lloyd V. Trautman Printed Name Sr Pet Eng. Title 10/11/2000 Date	
					¹⁸ SURVEYOR CERTIFICATION I hereby certify that the well location shown on this plat was plotted from field notes of actual surveys made by me or under my supervision, and that the same is true and correct to the best of my belief. Date of Survey Signature and Seal of Professional Surveyer: Certificate Number	

#12
330'
990'

**Administrative Application For
Non-Standard Gas Well Location
Chevron USA Production Co.
G. C. Matthews #12
Surface Loc. 330' FSL & 990' FEL
Section 6, T20S, R37E
Monument Tubb West Pool
Lea County, New Mexico**

Offset Operators

Amerada Hess Corporation
500 Dallas Street, Level 2
Houston, TX 77002

Cross Timbers Operating Company
3000 N. Garfield
Suite 250
Midland, TX 79705

Marathon Oil Company
125 West Missouri Ave
Midland, TX 79701

Rice Engineering
122 West Taylor
Hobbs, NM 88240

Texaco Exploration and Production Inc.
P.O. Box 3109
Midland, TX 79702

Falcon Creek Resources Inc.
621 17th Street
Suite 1800
Denver, CO 80293-0621



October 11, 2000

Chevron U.S.A. Production Company
P.O. Box 1150
Midland, TX 79702

Administrative Application For
Non-Standard Gas Well Location
Chevron USA Production Co.
G. C. Matthews #12
Surface Loc. 330' FSL & 990' FEL
Section 6, T20S, R37E
Monument Tubb West Pool
Lea County, New Mexico

(Offset Operator)

Ladies/Gentlemen:

Attached is a copy of an administrative application for a non-standard Monument Tubb West gas well location.

Chevron U.S.A. is planning to deepen the existing G. C. Matthews #12, which is at a non-standard location for the Monument Tubb West Pool.

Any objections to this application must be filed with the New Mexico Oil Conservation Division within 20 days after the Division has received the application.

If you have any questions regarding this application, please contact Lloyd Trautman at (915) 687-7152.

Sincerely,

COPY

Lloyd V. Trautman
Sr. Petroleum Engineer
New Mexico Area

Attachments

cc: Central Files - Lease and Well Files